

# CIPM: A Customizable Approach to Strategic Partnerships

Dr. Danesha Seth Carley

Associate Professor, Dept. of Horticulture

Director, CIPM

# Workforce Development



**Jen O'Brien** · 2nd  
Field Agronomist  
Tifton, Georgia, United States · [Contact info](#)



**Lauren Kilpatrick** · 2nd  
Technical Lead at Syngenta Flowers  
Clementon, New Jersey, United States · [Contact info](#)  
209 connections



Syngenta Flowers



NC State University Graduate School



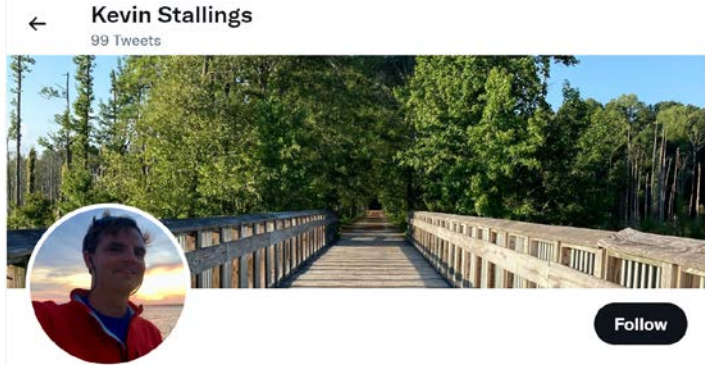
**Jonathan Giacomini** · 2nd  
I study host-parasite dynamics in plant-pollinator relationships.  
Falmouth, Massachusetts, United States · [Contact info](#)



**Poovanna Kuttetira** · 2nd  
Software Engineer at Google  
Seattle, Washington, United States · [Contact info](#)



**Dakota Lowery** (He/Him) · 3rd  
Product Engineer at ESRI  
Raleigh, North Carolina, United States · [Contact info](#)



**Kevin Stallings**  
@KdSciencek12

Follow



**Marisol Mata** · 1st  
Science and conservation leader | Zero waste supporter. I aim to leave every place better than I found it.  
Washington DC-Baltimore Area · [Contact info](#)



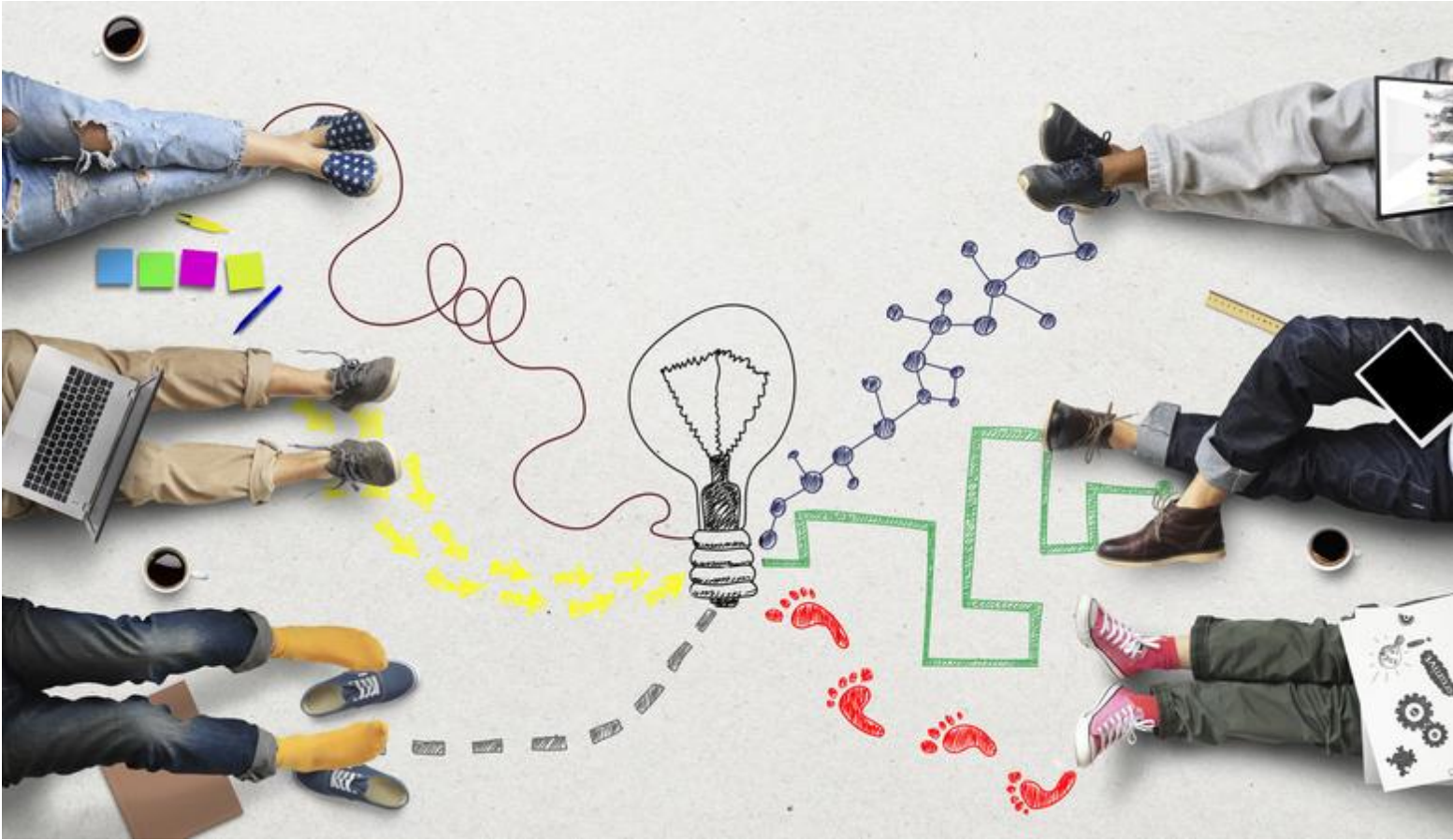
The Nature Conservancy



North Carolina State University



# Innovative IPM Solutions



# Strengthening Food Security



CIPM: A Customizable Approach to Strategic Partnerships



# NSF Center for Integrated Pest Management

Home

About

Our Team

What We Do

Publications & Seminars

News



<https://cipm.ncsu.edu>