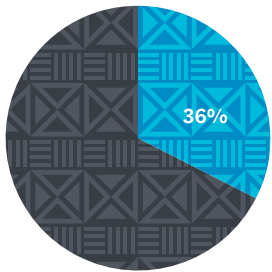


Pacific National Overview

Population 2022-2032



36%

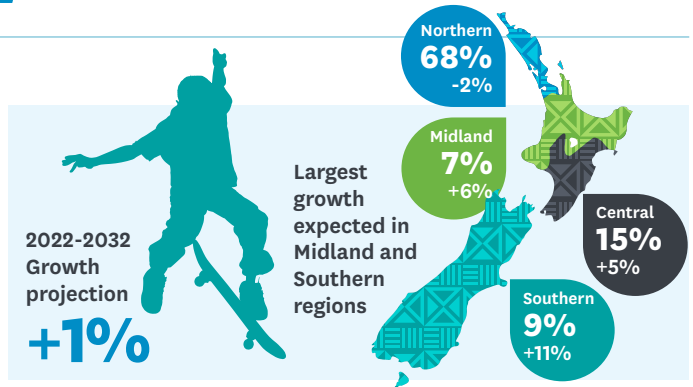
of Aotearoa NZ's Pacific population are 0-19 years old

A youthful population!

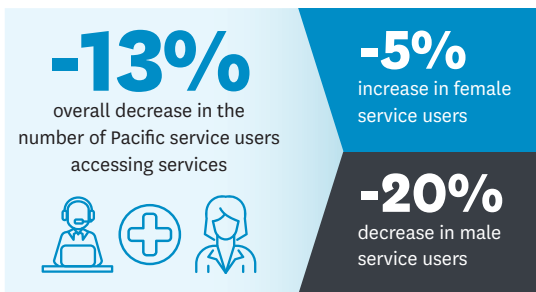


10%

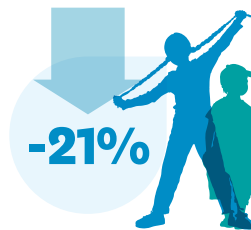
of Aotearoa NZ's 0-19 population is Pacific



Pacific 0-19 yrs service user access to ICAYMH/AOD services, 2019 to 2021



Overall decrease seen in the 5-9-year group



Decrease in service users across all regions



Decrease in access rate from 2.8% to 2.4%

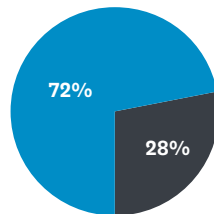
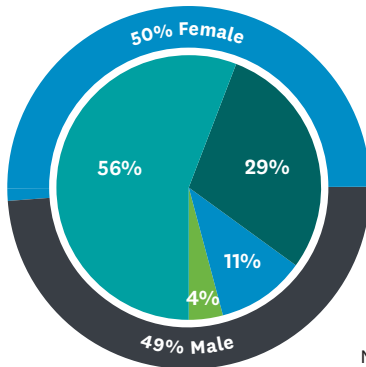


Pacific 0-19 yrs service user access to ICAYMH/AOD services, 2021:

Pacific total service users:

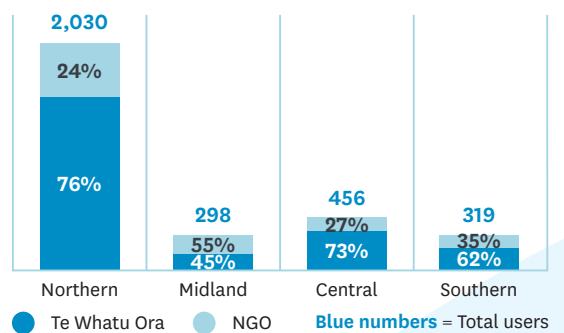
5%

- 15-19-year-olds
- 10-14-year-olds
- 5-9-year-olds
- 0-4-year-olds



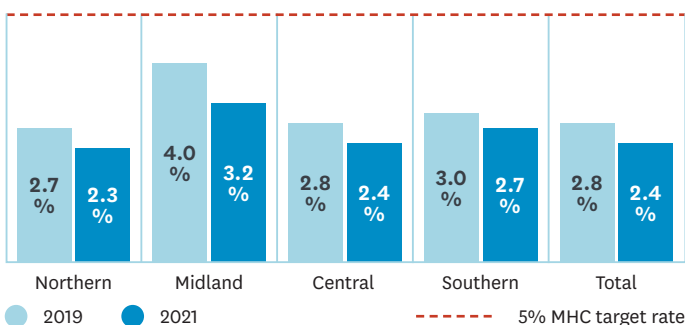
Pacific largely accessed NGOs in the Midland region

Pacific 0-19 yrs service users by region

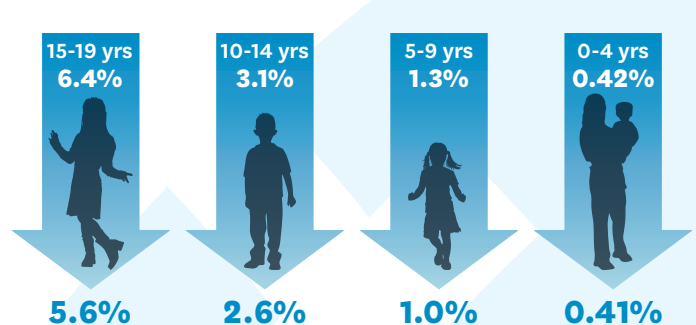


Pacific access rates, 2019 to 2021:

Pacific 0-19 yrs user access rates by region



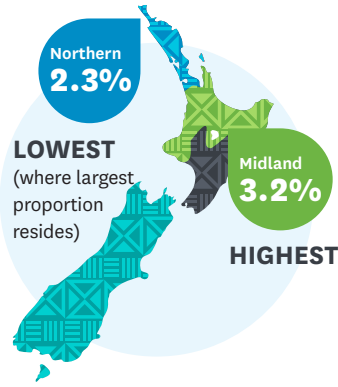
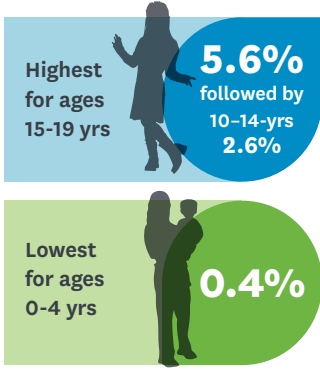
Pacific user access rates by age group



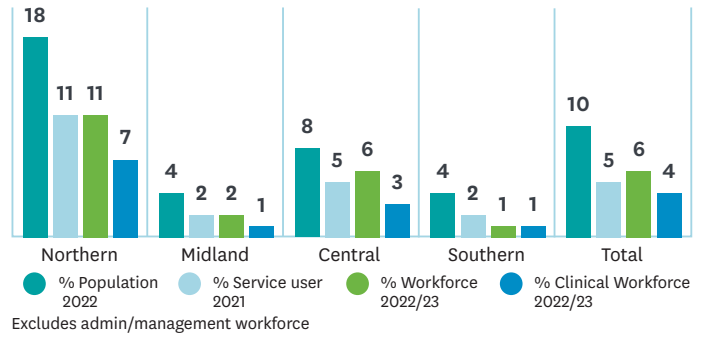
Find out more at wharaurau.org.nz/stocktake



Pacific access rates 2021:



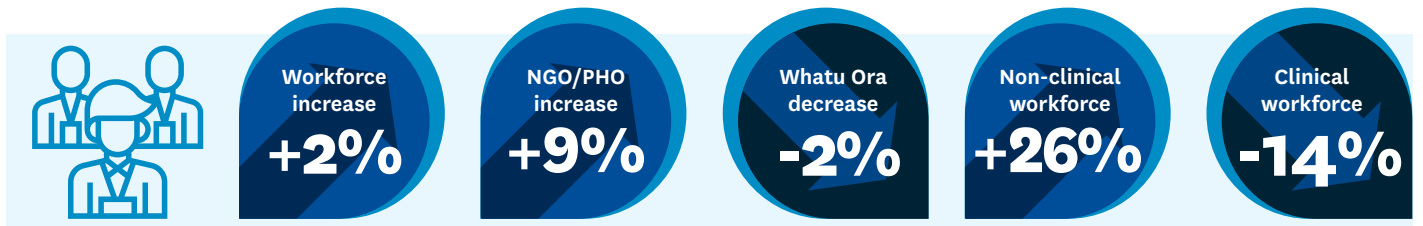
Pacific 0-19 yrs population, service user & workforce comparisons



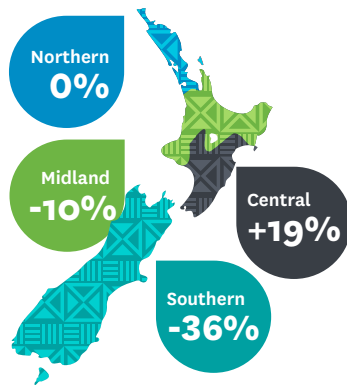
Third highest access rate out of the four ethnic groups but remains below the 5% target rate.

Improving access rates for Pacific children and young people, especially for those under 15-year-olds needs to remain a key area of focus.

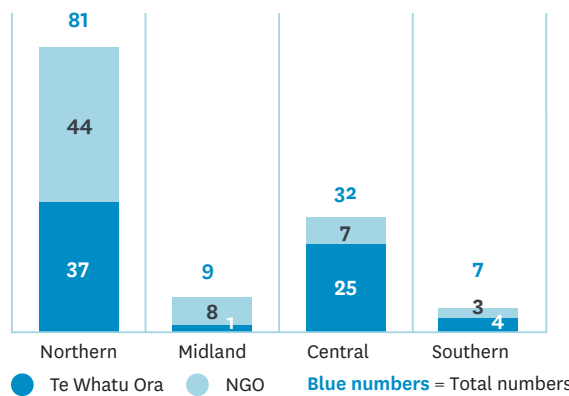
Pacific ICAYMH/AOD workforce, 2020 to 2022/23



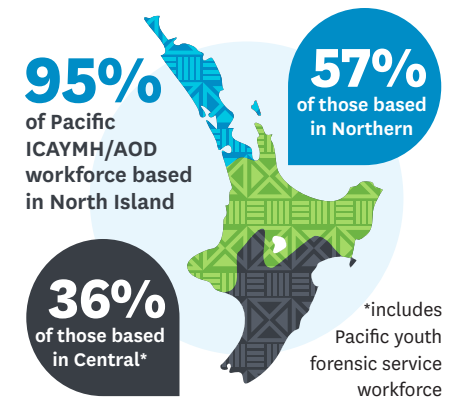
Changes in workforce numbers by region, 2020 to 2022/23



Pacific ICAYMH/AOD workforce by region (2022/23)*

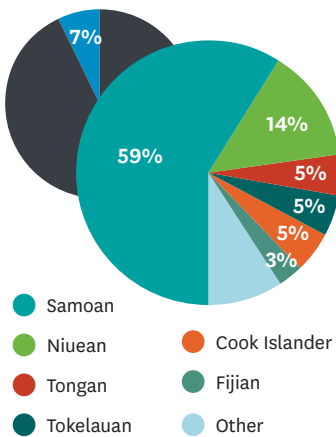


Workforce distribution (2022/23)



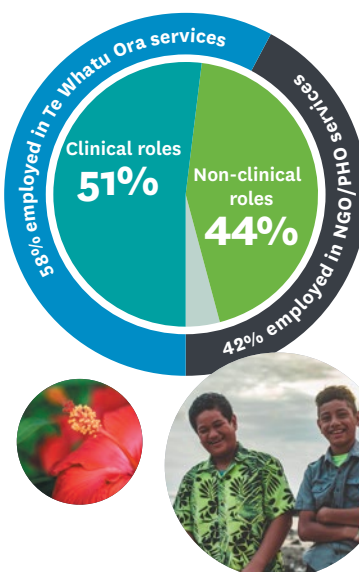
Pacific ICAYMH/AOD workforce by ethnicity 2022/23

Pacific workforce made up 7% of the total ICAYMH/AOD workforce.



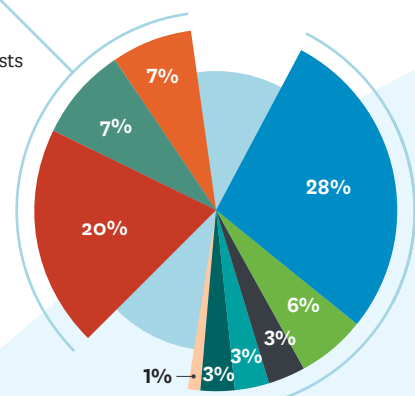
Less than half (40%) were fluent in their respective languages

Pacific ICAYMH/AOD workforce employers and roles (2022/23)



Clinical roles (52% of total) comprised:

- Nurses
- Occupational Therapists
- Social Workers



Non-clinical roles (44% of total) comprised:

- Mental health support workers
- Cultural roles
- Peer support workers
- Administration
- Youth workers
- Management

Find out more at wharaurau.org.nz/stocktake

