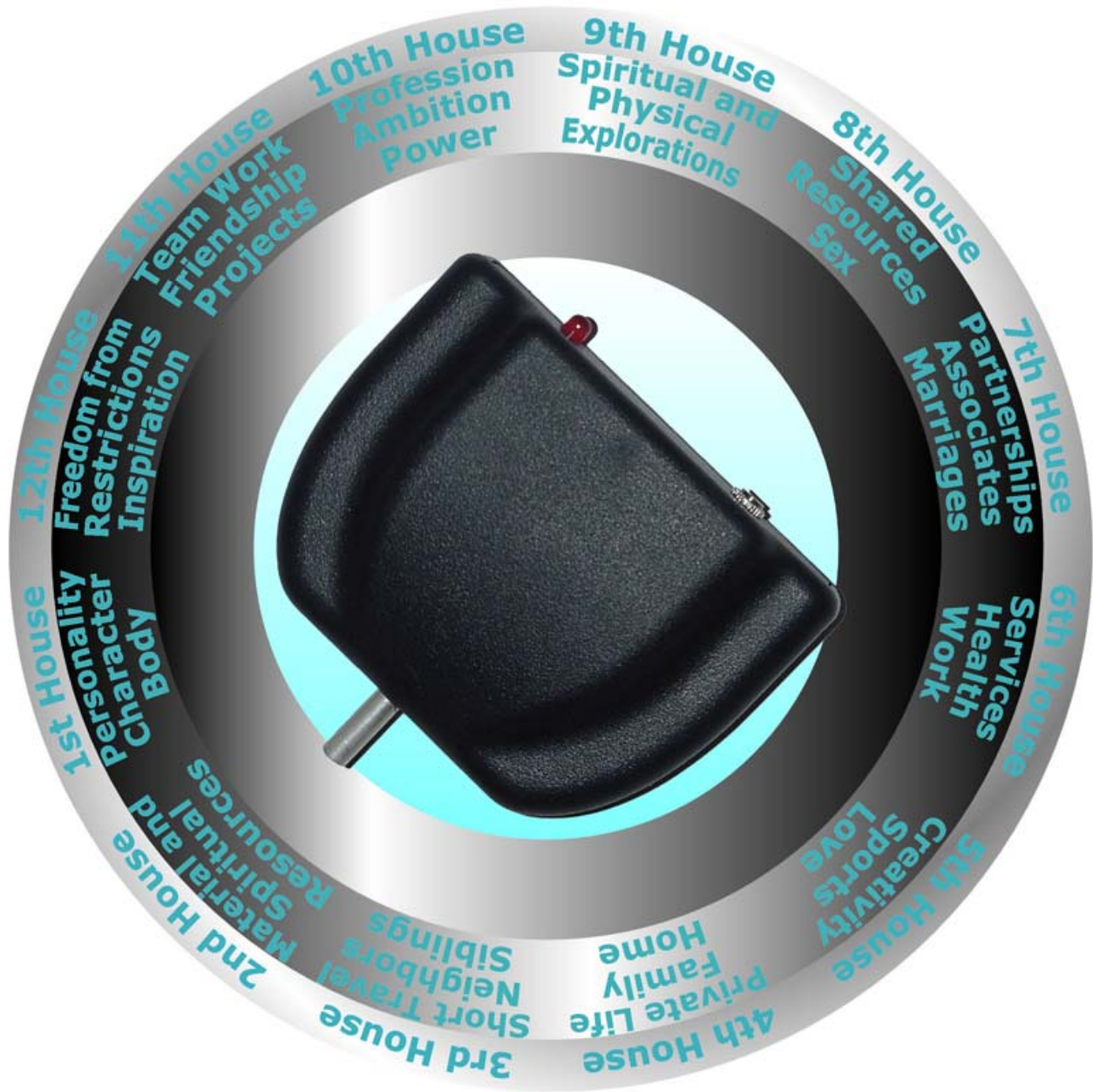


Manual for ADM

Astro-Dynamic Manifestation



Now you can energize yourself, your living space, home, office and any other location with the power of zodiacal and planetary energies

by Karl Hans Welz

Copyright © 2006 by Karl Hans Welz. All graphics, text materials, concepts of Astro Dynamic Manifestation methods (ADM), and design are sole property of Karl Hans Welz. All Rights Reserved. No portion of this publication or any ADM methods may be used without expressed written consent of the author. Orgone Generator®, Chi Generator®, Orgonite®, Prana Generator® are registered trademarks owned by Karl Hans Welz.

1. Astro Dynamic Manifestation – what it can do for you

There are numerous skills that were thought to be psychic, miracles, shamanism or magic in the past. In fact, by now you know that all these skills are powerful technology that you can use with the same ease that it takes to watch TV, to use a telephone or to drive a car.

WELCOME TO Astro Dynamic Manifestation!

Astro Dynamic Manifestation™ is exciting new technology that can mean for you the difference between average results and TOTAL SUCCESS !!!

As the name tells you, Astro Dynamic Manifestation™ is a science and powerful technology that allows you to define and harness the influences of the stars and planets to help you take control of love, business, career, sports performance, fitness and life itself, and the energetic vehicle of this extremely powerful manifestation technique is life force, or bio-energy. More precisely, you are going to use generators of life force in conjunction with well-designed and defined planetary energy fields to achieve success.

After having acquired the knowledge in this publication, you will be capable of custom designing any astrological energy that you desire and you can activate this well-defined energy in your home, office or in any other location. You can also project this cosmic energy to yourself or at any other person. In fact, what you are starting to practice here is applied astrology.

Following the instructions in this publication, you can custom design astrological energies of your choice almost immediately. To deepen this knowledge further and to improve your skills in custom designing astrological energies, the non-astrologer will do well to study my free astrology course. Even if you are already a practicing astrologer, it will be helpful that you familiarize yourself more thoroughly with the keyword method of astrological energy design.

As you will realize soon, this keyword method is an important tool in the work with ADM. With this method, you are capable of custom designing rapidly and precisely very specific astrological trends, inclinations, motivations, etc. The more you know about the meanings of planets, houses, signs and aspects and the correlating key words, the more effective you will be in your work.

What you are about to learn is the practical application of the ancient saying that “the wise rules the stars”

The typical modern astrologer is not aware of the possibilities of ADM, and she or he usually interprets “ruling the stars” as some manner of “wise adaptation” to the various whims and trends to which the stellar positions give inclination. This means that most modern day astrologers are quite satisfied with interpreting the horoscopes of their clients and giving them advice, being unaware that, in fact, the stars, i.e., the stellar influences within and in the surroundings, can be ruled very effectively by the wise!

The ancients already knew very well of the power that they were capable of drawing from the stars. Based on this knowledge of the true potential of astrological energies and the practical application of such knowledge, they correctly pointed out the “the wise rules the stars,” and they understood very well the true and far-reaching meaning of this

saying. To these wise persons of ancient times, astrology certainly was a lot more than just giving some advice of how to adjust to the will of the planets. It was truly "magic" when they used their knowledge to harness the stellar and planetary energies. As a result of this much more practical and infinitely more meaningful application of astrology, their clients were capable of ...

- ...Taking control of their attitudes, skills and energy levels
- ...Having a powerful impact upon their surroundings, and
- ...Mastering their future and destiny.

In fact, this extraordinary and powerful technology upon which you are about to embark was the result of a thorough understanding of the ancient knowledge of astrology, and this technology, in fact, offers you far more than was ever possible previously. This ancient science turned out to be knowledge, which can now be explained easily and precisely in the light of the new science of orgone physics, or the physics of life force: By now we know that astrological influences upon nature and human beings, or trends of destiny, are the result of the properties of life force: negative entropy and direct transfer at any distance. I have established this theoretical basis of astrology, and for over twenty years I had a successful career as a professional astrologer who was also capable of helping his clients. By now I am passing on this knowledge to all who are willing to be the "wise who rule their stars!"

Gone are the days when you have been exposed to the whims of a "destiny" that the planetary positions "promise" and by now you are capable of generating for yourself the energy for success in the same way as the owner of a greenhouse can generate a climate suitable for the growth of plants that the outside climate would forbid in the time and location of the greenhouse.

Based on this path breaking new understanding of astrology combined with my truly revolutionary invention, the Chi Generator®, which is a generator of life force that has never been seen on this planet before, I naturally developed new methods and equipment that makes it possible for you to actually create any planetary energy (trend energy) that you desire. This means that by now this extremely powerful technology of taking control of planetary energies is as easy as 1-2-3: In fact, if you can read your daily horoscope column, you can take control of your destiny, and you can do so with ease!

In the following chapters, you will become familiar with the key words of the astrological houses (mundane houses), planets and signs first, then a step-by-step introduction to applications of ADM, using symbolic setup and software, and finally a set of success strategies that will prove to be very useful in situations and challenges of a more complex nature.

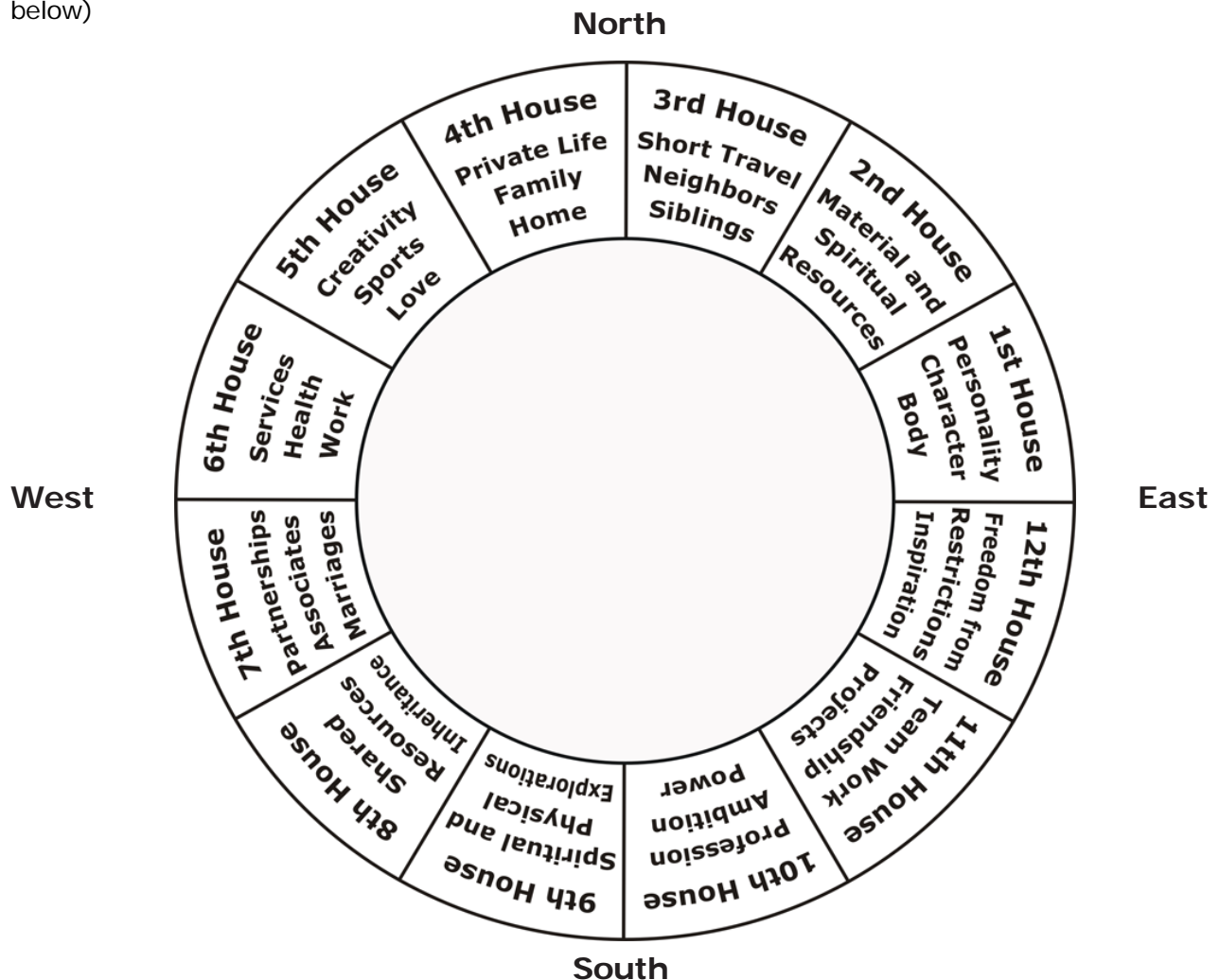
2. Meanings of Houses, Planets and Signs, Key Words and Descriptions used in Astro Dynamic Manifestation Techniques

NOW let's continue with a brief description of the elements of astrology, which is a precondition to your step by step introduction to the practical application of ADM! If you have studied the astrology course, you can skip this section and continue with section 3.

The mundane houses:

The twelve mundane houses are considered the "static" part of the astrological chart. The positioning of these twelve houses starts with the point in the East, which is close to the intersection of the horizon with the ecliptic. The ecliptic is an imaginary line in the sky, which is the projection of the Earth's orbit around the Sun, as seen from the point where we are standing. The ecliptic is subdivided in twelve sectors of 30 degrees each, and each of these sectors is an astrological sign. The planets are always close to the ecliptic. I suggest that you get a good introduction into astrology for a description of the astronomical factors that make up the structure of an astrological chart, or horoscope. The twelve houses are called "mundane houses," because they represent actual "earth-bound," i.e., mundane experiences, which are influenced by the other astrological factors, planets and signs.

Back to the twelve houses: they start in the East and go counter clockwise around the horizon. The cusp (beginning) of the fourth house is in the exact North, the beginning of the seventh house is in the West, where the ecliptic intersects with the horizon, and the beginning of the tenth house is exactly in the South. Each house measures 30 degrees of the horizon (see diagram below)



A brief description of the influences of the mundane houses, planets and signs is on your ADM Quick Reference Guide.

House	Fields of Life Experiences and Activities
First	Personal and self-related concerns
Second	Personal possessions and security
Third	Relationship to the immediate environment
Fourth	Personal home and private life
Fifth	Instinctive affections and re-creation
Sixth	Services given and received and health
Seventh	Partnership relationships at a personal level
Eighth	Material relationships involving shared resources
Ninth	Mental and physical explorations
Tenth	Place in society and standing in the world
Eleventh	Hopes and wishes and impermanent attachments
Twelfth	Freedom from restrictions

The Houses more in Detail:

First House

More detailed description:

Personal and self related concerns: Experiences, challenges and solutions that have to do with one's establishing oneself as a distinct personality and being. The first house affairs are related to the physical body, the temperament, and the general disposition.

Related Planets and Signs:

The first house has a close correspondence to the inclinations and motivations of the planet Mars and to the energies and modes of expression of the sign Aries.



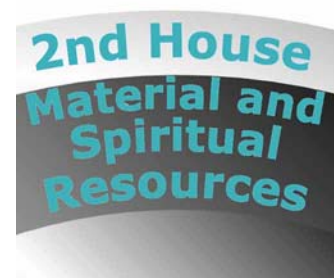
Second House

More detailed description:

Personal possessions and security: Experiences, challenges and solutions that have to do with one's accumulating material resources for the purpose of establishing security. The second house affairs are related to resourcefulness in acquisition, appreciation of luxury, and satisfaction with the material.

Related Planets and Signs:

The second house has a close correspondence to the inclinations and motivations of the planet Venus and to the energies and modes of expression of the sign Taurus.



Third House

More detailed description:

Relationships to the immediate environment: Experiences, challenges and solutions that have to do with one's adjusting to persons who are close because of circumstances and to the beginning of the process of education. The third house affairs are related to neighbors, brothers and sisters, short travel, and direct communication.

Related Planets and Signs:

The third house has a close correspondence to the inclinations and motivations of the planet Mercury and to the energies and modes of expression of the sign Gemini.



Fourth House

More detailed description:

Personal home and private life: Experiences, challenges and solutions that have to do with one's establishing a place within which to protect oneself and one's possessions. The fourth house affairs are related to the family unit and the property occupied.

Related Planets and Signs:

The fourth house has a close correspondence to the inclinations and motivations of the planet Moon and to the energies and modes of expression of the sign Cancer.



Fifth House

More detailed description:

Instinctive affections and re-creation: Experiences, challenges and solutions that have to do with one's creating his own image through both the body and the mind. The fifth house affairs are related to sporting activities, speculation, love making, children, and personal creations.

Related Planets and Signs:

The fifth house has a close correspondence to the inclinations and motivations of the planet Sun and to the energies and modes of expression of the sign Leo.



Sixth House

More detailed description:

Services given and received and health: Experiences, challenges and solutions that have to do with one's serving others and being served in order to maintain good health through reciprocity. The sixth house affairs are related to detailed work, health, hygiene, and interdependence.

Related Planets and Signs:

The sixth house has a close correspondence to the inclinations and motivations of the planet Mercury and to the energies and modes of expression of the sign Virgo.



Seventh House

More detailed description:

Partnership relations at a personal level: Experiences, challenges and solutions that have to do with one's attaching oneself to others in order to compensate for one's own sense of lack. The seventh house affairs are related to marriage partners and business and professional associates.

Related Planets and Signs:

The seventh house has a close correspondence to the inclinations and motivations of the planet Venus and to the energies and modes of expression of the sign Libra.



Eighth House

More detailed description:

Material relationships involving shared resources: Experiences, challenges and solutions that have to do with one's sharing his/her possessions with others and to his/her sharing the possessions of others. The eighth house affairs are related to material dependence, inheritances, and self sacrifice.

Related Planets and Signs:

The eighth house has a close correspondence to the inclinations and motivations of the planets Pluto and Mars and to the energies and modes of expression of the sign Scorpio.



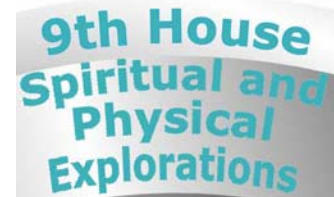
Ninth House

More detailed description:

Mental and physical explorations: Experiences, challenges and solutions that have to do with one's furthering the process of education through in-depth study and extensive travel. The ninth house affairs are related to foreign travel, extensive research, philosophy, religion, publishing, and higher education.

Related Planets and Signs:

The ninth house has a close correspondence to the inclinations and motivations of the planets Jupiter and Neptune and to the energies and modes of expression of the sign Sagittarius.



9th House
Spiritual and
Physical
Explorations

Tenth House

More detailed description:

Place in society and standing in the world: Experiences, challenges and solutions that have to do with one's going outside his home to establish himself properly in the social, business, and professional circles through entering into a career. The tenth house affairs are related to ambition, special talent, and practicality.

Related Planets and Signs:

The tenth house has a close correspondence to the inclinations and motivations of the planets Saturn and Uranus and to the energies and modes of expression of the sign Capricorn.



10th House
Profession
Ambition
Power

Eleventh House

More detailed description:

Hopes and wishes and impermanent attachments: Experiences, challenges and solutions that have to do with one's relating successfully to group activity in order to participate in creative concerns that are communal in nature. The eleventh house affairs are related to friendships, societies, clubs, connections, objectives, and concerns.

Related Planets and Signs:

The eleventh house has a close correspondence to the inclinations and motivations of the planets Uranus and Saturn and to the energies and modes of expression of the sign Aquarius.



11th House
Team Work
Friendship
Projects

Twelfth House

More detailed description:

Freedom from restrictions: Experiences, challenges and solutions that have to do with one's resisting impediments to his efforts to be a totally integrated part of the process of living. The twelfth house affairs are related to limitations, barriers, isolation, solitude, confinement, the unconscious, and the hidden.

Related Planets and Signs:

The twelfth house has a close correspondence to the inclinations and motivations of the planets Neptune and Jupiter and to the energies and modes of expression of the sign Pisces.



12th House
Freedom from
Restrictions
Inspiration

Planets

Sun

Additional meanings:

To integrate = to transform into a whole by bringing all parts together

To express = to make known to the world

To project = to thrust outward and forward into the world

There are relationships between the Sun and vitality, determination, the masculine principle, dignity, self reliance, magnanimity, the man, and the father.

Psychological: Everyone feels strong motivations to become a whole person, to let others know of his/her existence, and to become a significant part of the environment. The Sun symbolizes the motivations to accomplish these three goals.

Physiological: The human heart has a close relationship with the Sun, since the Sun is viewed as being the heart of the Solar system. Furthermore, the delicate network of veins and arteries circulate that which is distributed by the heart; therefore the circulatory system has a correspondence to the Sun. Difficult aspects to the Sun point toward susceptibility to afflictions of these parts of the body. Note that these parts are the sustainers of life.

6	32	3	34	35	1
7	11	27	28	8	30
19	14	16	15	23	24
18	20	22	21	17	13
25	29	10	9	26	12
36	5	33	4	2	31

Moon

Additional meanings:

To respond = to make a reply through the emotions

To react = to undergo a change through the emotions

To regulate = to control or to adjust into rhythmic function

There are relationships between the Moon and instinct, emotions, memory, protectiveness, domesticity, patriotism, and mother.

Psychological: Everyone has an inclination to make his emotions known, to effect revision of the emotions, and to conform to cyclic actions. The Moon, as controller of the rise and fall of the tide, is the indicator of one's instinctive behavior in response to these three urges.

Physiological Associations

The Moon has a close association with the stomach, the breasts, the lymphatic system, the pancreas, the ovaries, and the sympathetic nervous system. Difficult aspects to the Moon point toward a susceptibility to afflictions of these parts of the body. Note that these parts are containers for and controllers of bodily functions.

37	78	29	70	21	62	13	54	5
6	38	79	30	71	22	33	14	16
47	7	39	80	31	23	25	35	15
16	48	8	40	81	24	36	26	56
57	17	49	9	41	73	37	38	25
26	58	18	50	1	42	74	39	66
67	27	59	10	51	2	43	75	35
36	68	19	60	3	44	76	4	76
77	28	69	20	61	12	53	4	45

Mercury

Additional meanings:

To communicate = to impart knowledge or ideas in order to reveal or to expose

To concentrate = to direct thoughts toward a common center

To transmit = to pass along from one person or place to another

There are relationships between Mercury and intelligence, mobility, adaptability, reason, self expression, perception, young people, writers, teachers, and travelers.

Psychological: Everyone has an urge to make his thoughts known, to give careful consideration to that of which he becomes aware, and to convey his feelings to others. Mercury, the planet of the reasoning process, indicates one's inclinations in these matters.

Physiological: Mercury has a very close correspondence to the respiratory system, the sensory organs, the nervous system, the thyroid gland, and the brain in general. Difficult aspects to Mercury point toward a susceptibility to afflictions of these parts of the body. Note that these parts are for the communication tracts of the body.

8	58	59	5	4	62	63	1
49	15	14	52	53	11	10	56
41	23	22	44	48	19	18	45
32	34	38	29	25	35	39	28
40	26	27	37	36	30	31	33
17	47	46	20	21	43	42	24
9	55	54	12	13	51	50	16
64	2	3	61	60	6	7	57

Venus

Additional meanings:

To relate = to show sympathetic understanding and awareness


To unite = to bring together as a whole

To connect = to join in proper association and perspective

There are relationships between Venus and art, affections, wife, young girls, finery, and ornaments.

Psychological: Everyone has a motivation to achieve harmony, to effect beauty in his relationships with his environment, and to bring together that which should properly be linked. Venus, the planet of justice and balance, is the indicator of one's urges in these directions.

Physiological: Venus has a close association with the venous circulation, the lumbar region, the kidneys, and the throat. Difficult aspects to Venus point toward a susceptibility to afflictions of these parts of the body. Note that these parts determine balance and imbalance within the whole body.



22	47	16	41	10	35	4
5	28	48	17	42	11	29
30	6	24	49	18	36	12
13	31	7	25	43	19	37
38	14	32	1	26	44	20
21	39	8	33	2	27	45
46	15	40	9	34	3	28

Mars

Additional meanings:

To initiate = to enter into expressions of physical energy

To activate = to engage in liveliness

To move = to change positions from one place to another

There are relationships between Mars and courage, war, passion, desire, heat, and young men.

Psychological: Everyone has inclinations to expend physical stamina, to set himself into worthwhile motions, and to resist inertia. Mars, as the planet of energy and motion, is the indicator of these natural urges.

Physiological: Mars has a close correspondence to the sex glands, the adrenal system, the red blood corpuscles, and the muscular system. Difficult aspects to Mars point toward a susceptibility to afflictions of these parts of the body. Note that these parts are associated with stimulation and activity.



11	24	7	20	3
4	12	25	8	16
17	5	13	21	9
10	18	1	14	22
23	6	19	2	15

Jupiter

Additional meanings:

To expand = to reach out in order to understand

To mature = to become fully developed and perfected

To experience = to have a personal encounter or involvement

There are relationships between Jupiter and enthusiasm, optimism, generosity, professional people, and the higher mind.

Psychological: Everyone has innate desires to satisfy his intellectual curiosity, to become a well-informed person, and to become independently emotionally satisfied. Jupiter, as the planet of expansion and unrestrained development, has a close affinity with these inclinations.

Physiological: Jupiter has a close association with the liver, which is the largest glandular organ in the body, and with the posterior lobe of the pituitary gland, which regulates growth. Difficult aspects to Jupiter point toward a susceptibility to afflictions of these two glands. Note that the two parts are related to expansion and growth.



4	14	15	1
9	7	6	12
5	11	10	8
16	2	3	13

Saturn


Additional meanings:

To limit = to restrict for justifiable reasons

To control = to govern for purposes of benefit

To discipline = to impress upon the mind or the memory

Saturn has a relationship to ambition, self preservation, convention, endurance, perseverance, stability, integrity, caution, and serious old people.



4	9	2
3	5	7
8	1	6

Psychological: Everyone has an urge to exercise restraint, even upon himself; to be master of his own destiny; and to gain command of both his overt acts and his private thoughts. Saturn, as the taskmaster planet, identifies and measures these urges.

Physiological: Saturn has affinity with the skin, the teeth, the spleen, the gall bladder, the anterior lobe of the pituitary gland, the pneumogastric nerve, and the bone structure of the body. Difficult aspects to Saturn point toward a susceptibility to afflictions of these parts of the body. Note that these parts give form, poise, and support to the skeletal system.

Uranus

Additional meanings:

To deviate = to depart from that which is usual and ordinary

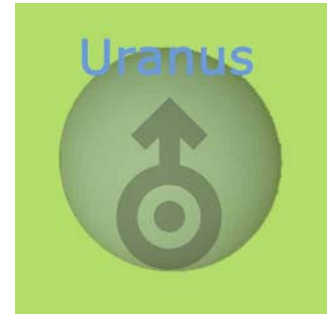
To invent = to create or to originate that which is different

To reform = to convert from within without destroying

Uranus has a relationship to originality, independence, eccentricity, inventors, aerial matters, and unusual people.

Psychological: Everyone has deeply seated desires to be individualistic, to design that which is yet unknown, and to improve upon that which has weakness or faults. Uranus, as the planet of the unusual and the unexpected, identifies these desires or urges.

Physiological: Uranus has a close correspondence to the sympathetic nervous system. Difficult aspects to this planet point toward a susceptibility to sudden and unexpected emotional breakdowns, cramps, hysteria, and all forms of paralysis. Note that the nervous system is also deeply involved in the psychological urges associated with this planet.



Neptune

Additional meanings:

To refine = to cultivate insights beyond the level of consciousness

To detect = to ferret out the significance of the abstract

To transcend = to rise above ordinary worldly matters

Neptune has a close relationship to intuition, imagination, idealism, compassion, illusion, mysticism, the unreal, liquids, and drugs.

Psychological: Everyone has motivations to see below the surface, to attach meaning to the immaterial, and to elevate oneself to the highest planes of understanding. Neptune, as the planet of nebulosity, is the indicator of these motivations.

Physiological: Neptune has a close association with the spinal canal, the thalamus, and the overall mental and nervous processes. Difficult aspects to this planet point toward a susceptibility to afflictions that are mysteriously difficult to diagnose, as well as to deeply rooted neuroses. Note the high degree of sensitivity associated with these parts.



Pluto

Additional meanings:

To eliminate = to cast out because of a need for replacement

To transform = to convert from one status to an entirely different one

To regenerate = to produce anew from the ruins of the original

Pluto has a close relationship to new beginnings, those who work below the surface of the Earth, group power, death, refuse, and the underworld.

Psychological: Everyone has an urge to get rid of that which serves no positive purpose, to remodel completely that which is undesirable, and to reorganize that which has fallen totally from its original status. Pluto, as the planet of no golden middle, indicates one's motivations toward these ends.

Physiological: Pluto has a close correspondence to cell formation, the system of reproduction, and the tracts of secretion. Difficult aspects to this planet point toward a susceptibility to afflictions of these parts of the body. Note that the functions of these parts relate pertinently to the physiological implications.



After you have carefully studied these key words and the symbolic associations of each of the planets, review these principles often and systematically. Make sure that you establish firmly in your mind the planetary principles so that you can, as your study progresses, and expand the symbolic representation to encompass all matters that properly belong with each planet.

For example, it is important that you realize that Mercury is associated with all matters of communication, including the abilities to reason and to express one's thoughts. Therefore, this planet is logically connected with the media for communication. It is the additional meanings to the key words that suggest to you the vastness of the associations.

The zodiacal sign in which a planet is located reveals the manner in which the person brings forth the inclination and motivation of the planet. The mundane house in which the planet is found describes the sphere of life upon which the person concentrates the inclination and motivation of the planet. The aspects between the planets show special modifications that will effect the actual efforts.

Signs

Aries

Extended Meanings

Assertively = with a positive and confident declaration

Urgently = with a pressure for prompt attention

Aries has an affinity with leadership, initiative, pioneering, engineering, the armed forces, and sharp instruments.

Attitude Expressions

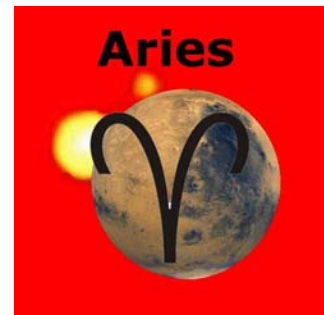
A planet in this sign will assume the Aries attitude of BEING and will operate in a manner that reflects directness, boldness, impulse, spontaneity, and fast motion.

Physiological Associations

Aries has an association with the head, the face, the brain, and the adrenal glands. Difficult aspects to an Aries ascendant or to planets in this sign may point toward a susceptibility to afflictions of these parts of the body.

Planet Affiliations

Aries principles have a very close correspondence to the inclinations and motivations of the planets Mars and Pluto.



Taurus

Extended Meanings

Enduringly = with unyielding persistence

Possessively = with a strong desire to dominate

Taurus has an affinity with possessions, money, building, architecture, banking, music, art, and growth from the earth.

Attitude Expressions

A planet in this sign will assume the Taurus attitude of HAVING and will operate in a manner that reflects reliability, steadfastness, conservatism, slowness, thrift, and gentility.

Physiological Associations

Taurus has an association with the neck, the throat, the larynx, and the thyroid gland. Difficult aspects to a Taurus ascendant or to planets in this sign may point toward susceptibility to afflictions of these parts of the body.

Planet Affiliations

Taurus principles have a very close correspondence to the inclinations and motivations of the planet Venus.



Gemini

Extended Meanings

Versatily = with an aptness for change

Variably = with a capacity for inconsistency

Gemini has an affinity with learning, teaching, traveling, communication, journalism, and agencies.

Attitude Expressions

A planet in this sign will assume the attitude of THINKING and will operate in a manner that reflects inquisitiveness, mimicry, duality, changeability, mediation, and wit.

Physiological Associations

Gemini has an association with the shoulders, the arms, the lungs, the chest, the nervous system, and the thymus gland. Difficult aspects to a Gemini ascendant or to planets in this sign may point toward susceptibility to afflictions of these parts of the body.

Planet Affiliations

Gemini principles have a very close correspondence to the inclinations and motivations of the planet Mercury.



Cancer

Extended Meanings

Sensitively = with an emotional response to outside influences

Protectively = with a defense against attack

Cancer has an affinity with containers, home, nourishment, commerce, and domesticity.

Attitude Expressions

A planet in this sign will assume the Cancer attitude of FEELING and will operate in a manner that reflects moodiness, common sense, patriotism, and tradition.

Physiological Associations

Cancer has an association with the stomach, the breasts, and the mammary glands. Difficult aspects to a Cancer ascendant or to planets in this sign may point toward susceptibility to afflictions of these parts of the body.

Planet Affiliations

Cancer principles have a very close correspondence to the inclinations and motivations of the planet Moon.



Leo

Extended Meanings

Impressively = with an excitation of admiration

Creatively = with the power to produce

Leo has an affinity with fatherhood, the theater, warmth, the performer, honor, jewelry, stock broking and other gambling.

Attitude Expressions

A planet in this sign will assume the Leo attitude of RESOLVING and will operate in a manner that reflects generosity, creativity, power, and loyalty.

Physiological Associations

Leo has an association with the spine, the upper back, and the Heart. Difficult aspects to a Leo ascendant or to planets in this sign may point toward susceptibility to afflictions of these parts of the body.

Planet Affiliations

Leo principles have a very close correspondence to the inclinations and motivations of the planet Sun.



Virgo

Extended Meanings

Analytically = with the intention of separating into parts

Critically = with the purpose of making a judgment

Virgo has an affinity with the physician, the nurse, the server of people, charity, editing, medicine, food, and hygiene.

Attitude Expressions

A planet in this sign will assume the Virgo attitude of EXAMINING and will operate in a manner that reflects productivity, thoroughness, memory, evaluation, and precision.

Physiological Associations

Virgo has an association with the hands, the abdomen, and the intestines. Difficult aspects to a Virgo ascendant or to planets in this sign may point toward susceptibility to afflictions of these parts of the body.

Planet Affiliations

Virgo principles have a very close correspondence to the inclinations and motivations of the planet Mercury.



Libra

Extended Meanings

Unitedly = with a goal of combining

Harmoniously = with the desire to manifest agreement

Libra has an affinity with partnerships, art, symmetry, justice, romance, peace, and law.

Attitude Expressions

A planet in this sign will assume the Libra attitude of BALANCING and will operate in a manner that reflects diplomacy, cooperation, sincerity, refinement, and neatness.

Physiological Associations

Libra has an association with the kidneys, the lumbar region, the lower back, and the endocrine glands. Difficult aspects to a Libra ascendant or to planets in this sign may point toward susceptibility to afflictions of these parts of the body.

Planet Affiliations

Libra principles have a very close correspondence to the inclinations and motivations of the planet Venus.



Scorpio

Extended Meanings

Intensely = with an air of strong concentration

Secretively = with an apparent intent to conceal

Scorpio has an affinity with passion, sexuality, waste disposal, research, policement, and the underground.

Attitude Expressions

A planet in this sign will assume the Scorpio attitude of DESIRING and will operate in a manner that reflects subtlety, fervor, shrewdness, and tenacity.

Physiological Associations

Scorpio has an association with the genitals, the bladder, the pelvis, and the gonads. Difficult aspects to a Scorpio ascendant or to planets in this sign may point toward susceptibility to afflictions of these parts of the body.

Planet Affiliations

Scorpio principles have a very close correspondence to the inclinations and motivations of the planets Pluto and Mars.



Sagittarius

Extended Meanings

Freely = with an objection to impediments

Widely = with a liking for breadth

Sagittarius has an affinity with foreign travel, horsemanship, philosophy, religion, legal matters, publishing, publicity, and exploration.

Attitude Expressions

A planet in this sign will assume the Sagittarius attitude of SEEING and will operate in a manner that reflects cheerfulness, optimism, curiosity, and foresight.

Physiological Associations

Sagittarius has an association with the hips, the thighs, the buttocks, the liver, and the pituitary gland. Difficult aspects to a Sagittarius ascendant or to planets in this sign may point toward susceptibility to afflictions of these parts of the body.

Planet Affiliations

Sagittarius principles have a very close correspondence to the inclinations and motivations of the planets Jupiter and Neptune.



Capricorn

Extended Meanings

Prudently = with the desire to avoid error

Reservedly = with a reticence to expose opinions or affairs

Capricorn has an affinity with old age, politics, responsibility, seriousness, persistence, government service, and public administration.

Attitude Expressions

A planet in this sign will assume the Capricorn attitude of USING and will operate in a manner that reflects purpose, patience, quiet, resourcefulness, and efficiency.

Physiological Associations

Capricorn has an association with bones, the knees, and the skin. Difficult aspects to a Capricorn ascendant or to planets in this sign may point toward susceptibility to afflictions of these parts of the body.

Planet Affiliations

Capricorn principles have a very close correspondence to the inclinations and motivations of the planets Uranus and Saturn.



Aquarius

Extended Meanings

Indifferently = with an apparent impartiality or lack of concern

Unconventionally = with a strong feeling for the unusual

Aquarius has an affinity with clubs and societies, eccentricity, humanitarianism, aerial matters, the inventor, theory, and civil service.

Attitude Expressions

A planet in this sign will assume the Aquarius attitude of KNOWING and will operate in a manner that reflects idealism, progressiveness, brotherhood, and reformation.

Physiological Associations

Aquarius has an association with the ankles, the calves, the shins, and the circulatory system. Difficult aspects to an Aquarius ascendant or to planets in this sign may point toward susceptibility to afflictions of these parts of the body.

Planet Affiliations

Aquarius principles have a very close correspondence to the inclinations and motivations of the planets Saturn and Uranus.



Pisces

Extended Meanings

Impressionably = with a high degree of receptivity

Intuitively = with the faculty to know through the senses

Pisces has an affinity with illusions, delusions, spiritual matters, mysticism, alcohol, drugs, the sea, institutions, and abstractions.

Attitude Expressions

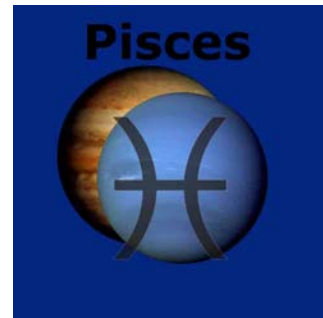
A planet in this sign will assume the Pisces attitude of BELIEVING and will operate in a manner that reflects hospitality, kindness, compassion, reticence, and fluidity.

Physiological Associations

Pisces has an association with the feet. Difficult aspects to a Pisces ascendant or to planets in this sign may point toward susceptibility to afflictions of these parts of the body.

Planet Affiliations

Pisces principles have a very close correspondence to the inclinations and motivations of the planets Neptune and Jupiter.



These are the twelve attitudes and manners of expression through which a planet will operate as it makes its never ending journey through the zodiac, spending a certain period of time in each of the signs. These attitudes and manners are made even more clear through three systems of grouping the signs: sextuplets, triplicities, and quadruplicities: see the added key words in the Quick Reference Guide.

3. Summary of Key Words

A Quick Reference Guide for Key Words used in Astro Dynamic Manifestation

Before we continue with the exercises, study the following keywords as in the Quick reference guide on the following page.

This guide will be of a significant help to you whenever you custom design astrological trend energies with which you are going to surround yourself, which you are projecting at another person or to a location of your choice.

This quick Reference Guide can also be very helpful for the professional consultant who knows those key words well. Having that list available, the consultant can use it to trigger the creativity when it comes to solve more complex situations.

When working for yourself, you can first define the field of life experience which will be the main focus for a specific time.

With experience, you can use computer programs, especially the Super Manifestation Program. When using these applications, the Quick reference Guide can be of a significant help again, since you have at your finger tips all the meanings of the energies which you are using in your program setup.

Quick Reference Guide for ADM Key Words

House	Areas of Life Experience and Activities	Planet	Actions upon areas of life experience (mundane houses)
First	Personal and self-related concerns	Sun	to integrate, to express, to project
Second	Personal possessions and security	Moon	to respond, to react, to regulate
Third	Relationship to the immediate environment	Mercury	to communicate, concentrate, transmit
Fourth	Personal home and private life	Venus	to relate, to unite, to connect
Fifth	Instinctive affections and re-creation	Mars	to initiate, to activate, to move
Sixth	Services given and received and health	Jupiter	to expand, to mature, to experience
Seventh	Partnership relationships at a personal level	Saturn	to limit, to control, to discipline
Eighth	Material relationships and shared resources	Uranus	to deviate, to invent, to reform
Ninth	Mental and physical explorations	Neptune	to refine, to detect, to transcend
Tenth	Place in society and standing in the world	Pluto	to eliminate, to transform, to regenerate
Eleventh	Hopes, wishes, impermanent attachments		
Twelfth	Freedom from restrictions		

Signs: The sign describes the basic energy of a mundane house and the operational mode of a planet

Aries	Assertive	Urgent	Vigorous	Forceful	Enterprising
Taurus	Enduring	Possessive	Passive	Cautious	Stable
Gemini	Versatile	Variable	Vigorous	Pensive	Adjustable
Cancer	Sensitive	Protective	Passive	Emotional	Enterprising
Leo	Impressive	Creative	Vigorous	Forceful	Stable
Virgo	Analytical	Critical	Passive	Cautious	Adjustable
Libra	United	Harmonious	Vigorous	Pensive	Enterprising
Scorpio	Intense	Secretive	Passive	Emotional	Stable
Sagittarius	Free	Wide	Vigorous	Forceful	Adjustable
Capricorn	Prudent	Reserved	Passive	Cautious	Enterprising
Aquarius	Indifferent	Unconventional	Vigorous	Pensive	Stable
Pisces	Impressionable	Intuitive	Passive	Emotional	Adjustable

4. Step-by-step introduction to ADM

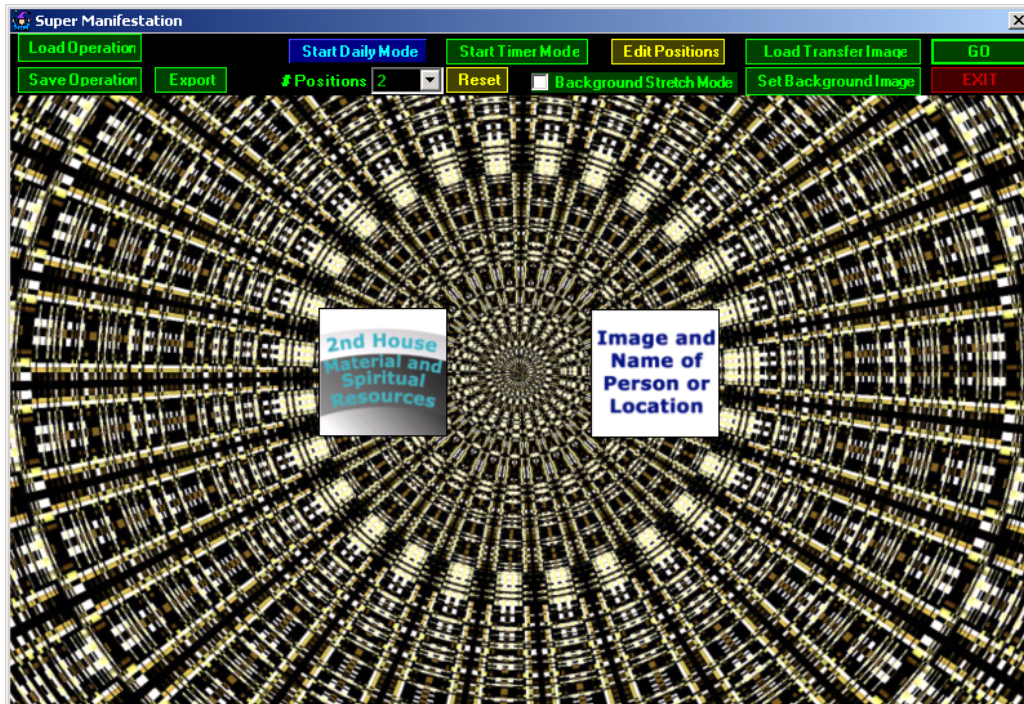
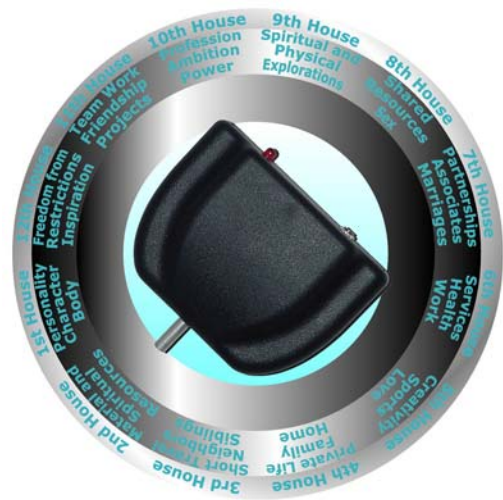
Adapt the following step by step instructions to your situations, and soon you will be an expert in the methods of ADM. In fact, you will notice soon that the practical application of ADM is extremely simple.

1. Defining the areas of life experiences of your choice: project the energies of the mundane houses

Mundane houses represent areas of life experience. As a beginning energy projection, you can set up the ADM House Disk with your Chi Generator®:

Practice 1.1: Set a desired area of life experience for yourself

Whenever you want the energy of a specific area of life experiences increased, you can project the energy of the corresponding astrological house to yourself: put the transfer disk of the TC99 into the desired house and simultaneously point the Chi generator® into that house. Example: To have a main focus on the energies of the second house, i.e., if you want to deal successfully with financial matters, take the house circle and point the output of your Chi Generator® to this house. Put the transfer disk onto the house and carry the rectangle on you (or vice versa, whatever you prefer). Naturally, you can use your Super Manifestation Program for this same operation. In fact, with this extremely versatile program, you can set the timing for astrological energies on a daily basis and adjust these energies to your daily activities. Below you can see a simple house vased setup with the Super Manifestation Program.



Practice 1.2: Set up desired areas of life experience in your living- and work spaces.

1.2.1. Do the same thing as in practice #1, this time without the transfer disk. The room in which the setup is located is powered up with the desired energy of the second mundane house. This is good for the office.

1.2.2. Instead of the energy of the second house, set and project the energy of the fifth house – for romance, in your living room or bedroom.

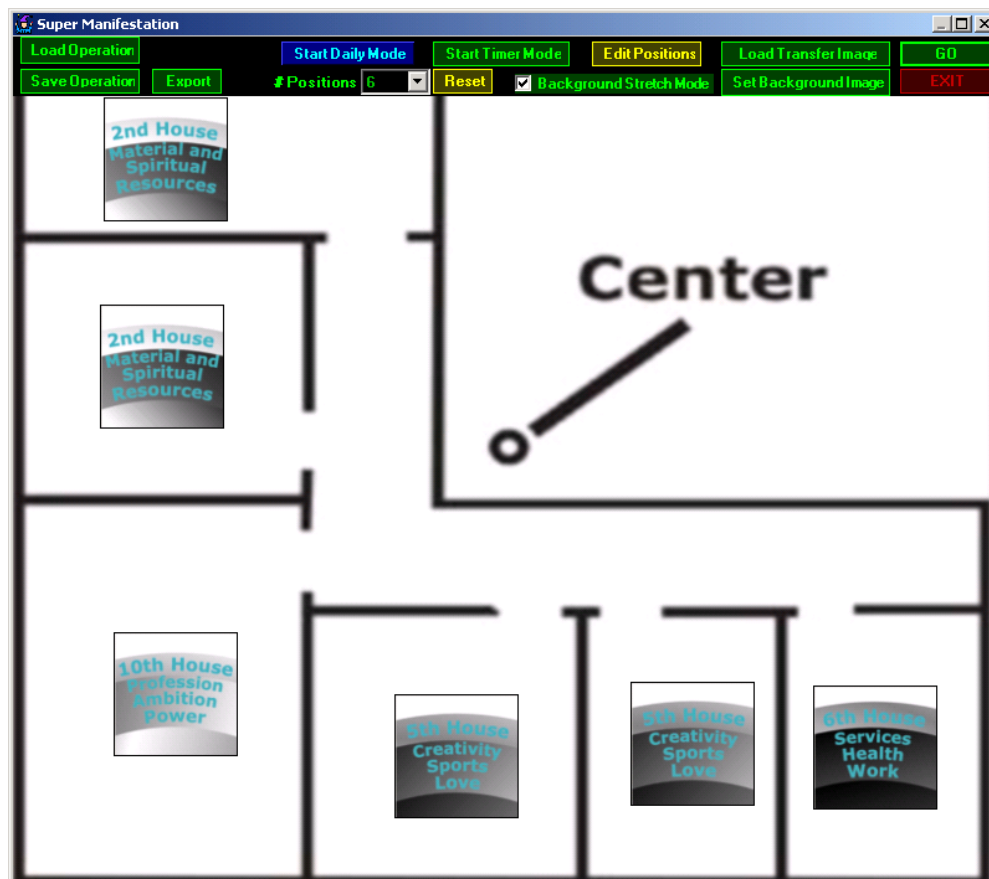
1.2.3. Practice with the energy of the twelfth house, for meditation, and, using the transfer couple, transfer to your favorite meditation location, chair, sofa or rug.

1.2.4. You can also set up the device in one room, use a transfer couple (TC 99), of which you put one part onto the chosen astrological house while the other part is in the room that you energize. Instead of the Transfer Couple (TC 99) you can use the Power Booster with Transfer Disk (PBT 2400) in conjunction with a JU 99-Series or with a stronger Chi Generator®.

1.2.5. The next step is transferring energies into more than one location. This you can do with a floor plan of your home or the location upon which you project the energies and install the desired energies there. Best is one JU 99 CE and setup for each location. Using the Super Manifestation Program, you can easily set up the timing for changes of house influences (and later planetary and sign energies as well) and project to several locations simultaneously.

1.2.6. You can make a design of the floor plan of your home and set this design as a background image of the Super Manifestation Program. Into each room of your home put the energy of the mundane house of your choice. The example below shows the layout of an office.

Note: You can put the same house energy into several rooms simultaneously. Such a setup never occurs naturally, no matter how you would re-arrange your home to match the natural house circle.



Practice 1.3: Set up desired areas of life experience for others

Now you can project energies of a mundane house to others – with their permission, of course. To do this, you can proceed as in practice 1.1. Instead of a transfer disk, give the person a transfer diagram: as described in the manual to the JU 99 and other manuals, you can make any arbitrary design – a scribble is ideal – and make a copy of this design. Put one copy with the JU 99 into the desired house and give the other copy to the person whom you want to strengthen with the specific energies of the chosen mundane house.

Important: While the energy transfer to a room in your home or any location can be continuous, transfer to another person can be much shorter. About 1 hour with the JU 99 CE is sufficient. Naturally, if so desired, you can have continuous transfer to a person as well, and you can change the house selection. With the Super Manifestation Program, you can set up the timing of these energies of astrological houses and adjust them to specific requirements and changes.

2. Setting the Planets

Planets represent actions, or functions. The planet in a house of your choice, then, defines the inclination and motivation (the planetary function) that you want to act upon this specific area of life experiences (the influence of the astrological mundane house).

With this planetary setup, you can go one step further, and with this, the huge advantages of ADM over traditional astrological methods become very clear to you: In nature, a planet is only in one house at a time, and this limits the main action of a planet to one field of life experiences at a time. Plus you have to wait for the time when such a position occurs: Since all planets apparently wander through all 12 houses in a 24 hour period as a result of the rotation of the Earth, you can time planetary house positions based on that. Naturally, such timing is very limiting, since it is dependent on the actual time of the planet being in this house, 2 hours on the average, and often not the time when such positioning is really needed. When using the methods of ADM, **you can activate the same planetary energy, its inclination and motivation, whenever you intend it to be active.** Moreover, you can do something that never occurs in nature: You can have one planet active in several astrological houses simultaneously, or you can activate two or more planets in a single house, which at that specific date simply does not occur in the sky. In other words, by now you can generate cosmic energy patterns of your choice at any time, instead of needing to wait for a long time until such a position occurs naturally. In fact, by now you can even go one step further and generate cosmic energy patterns that never occur naturally. For instance, you can have each of these planets act with background energies of different zodiacal signs. You are going to find out more about that essential difference to the naturally occurring astrological charts when I am going to introduce you to the inclusion of astrological signs a bit later in this publication.

Practice 3: Set up one planet for yourself

This is a practice that you can use to focus on a basic planetary action (inclination and motivation) in the most general way, i.e., Jupiter for expansion and exploration, Saturn to limit for a purpose, Mars for activity, etc.

The basic planetary action and energy that you will experience in this practice is not limited to any area of life experience (since such a planet is not yet put into a mundane house) and not modified by any single manner of expression (sign).

The practice is very simple and practically identical with what you have done previously using the house symbol: put the planetary symbol in front of your Chi Generator® and next to the transfer disk. When you intend to energize a room, simply put the planetary symbol in front of the Chi

Generator® without transfer disk or do the same setup – planetary symbol in front of the Chi Generator® with transfer disk and second transfer in the targeted room.

Naturally you can have more options when using the Manifestation Program or the Super Manifestation Program.

Call us or e-mail us to see demonstrations (streaming video online) of how you can make optimal use of these programs!

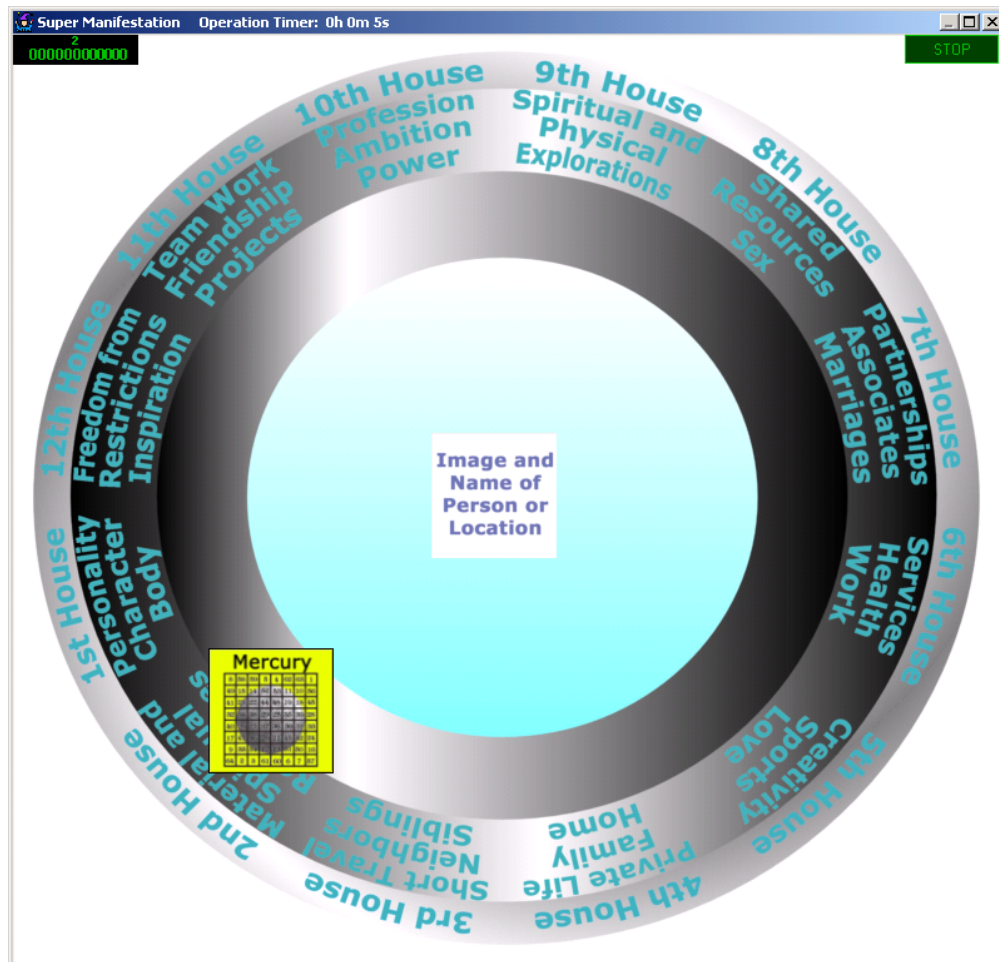
3. Setting the Planets in Mundane Houses

Practice 4: Set up one planet in one mundane house for yourself, others or to a location.

The next step is a combination of one planet in one house. This is relatively simple to set up: Put the house symbol and the planet in front of your Chi Generator®. Transfer to a person or to a location of your choice with the Transfer Couple TC 99 as described above.

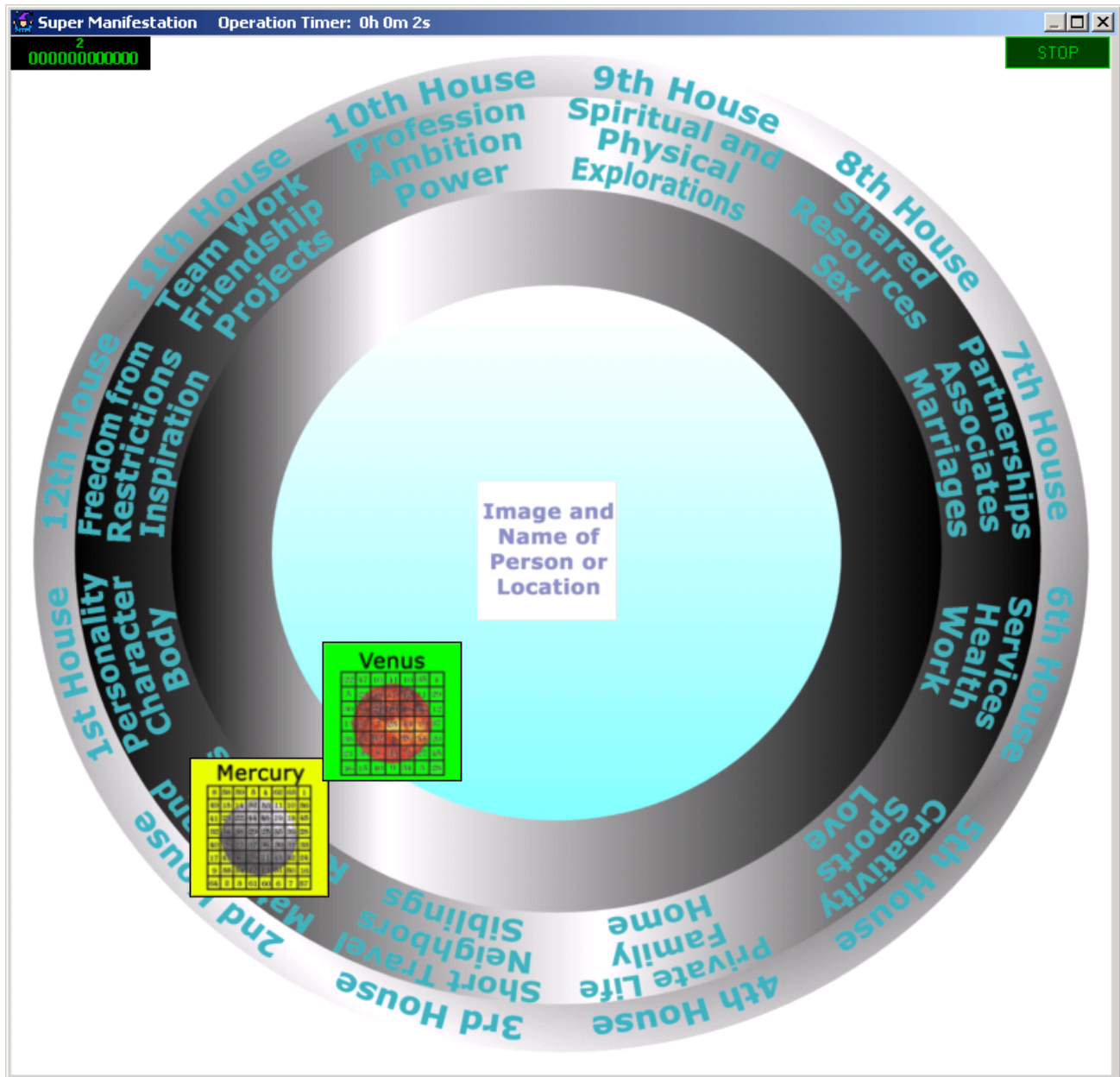
Instead of the house symbol, you can put down the house disk and put a planet of your choice into the house of your choice: Decide for house and planet using the Quick Reference Guide with the key words. Point your JU 99 CE or other Chi Generator® to house and planet and put the transfer onto that location.

As an introductory exercise, define several specific energies that you want to be active and then set up the planet and house. Example: careful consideration (thinking about and planning) of financial matters (Mercury in the second house)



Practice 5: Set up several planets in one mundane house for yourself, others or to a location.

In principle, you proceed similar as in practice #4. Example: careful consideration together with a balanced and harmonious approach to financial matters – Mercury and Venus in the second house (see the Quick Reference Guide!)

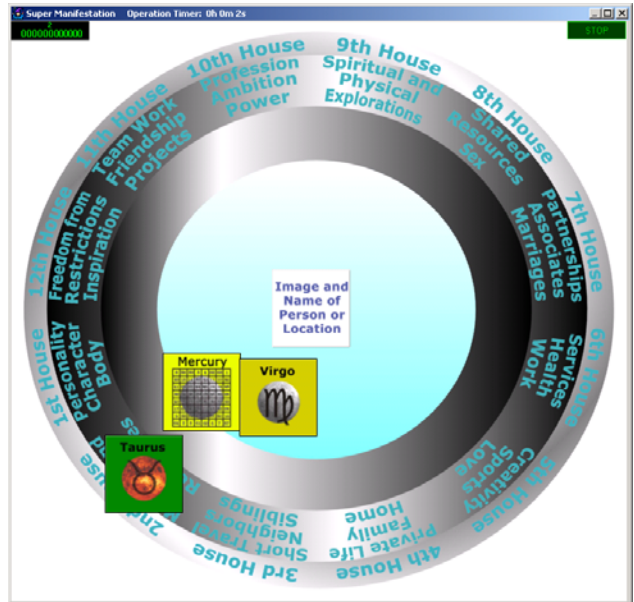


4. Setting the Signs for Planets and Mundane Houses

Practice 6: Setup house in sign

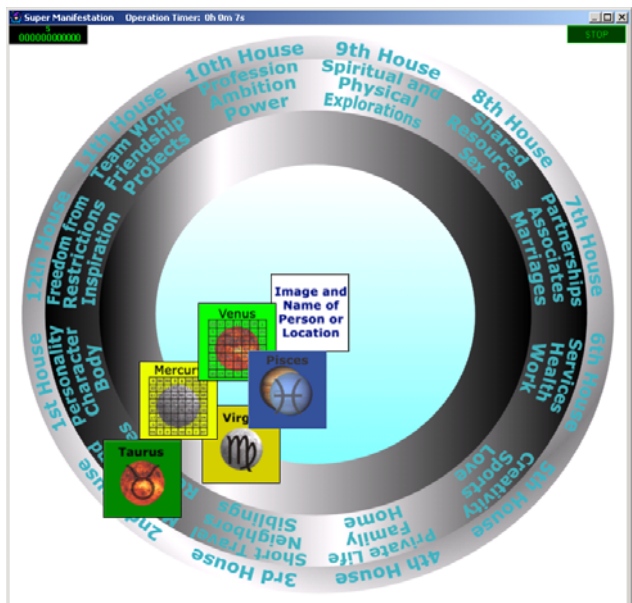
The sign in which a house is located, i.e., the sign that gives energy to the house, determines the mode of experiences of this house. For instance, if the second house is in leo, matters relating to personal possession and security, i.e., finances, are in an atmosphere of creativity and impressiveness.

Practice 7: Setup house with planet and sign - In the example below the second house and the planet Mercury are in the sign of Taurus. In fact, you can assign to the planet another sign than the sign of the house, and this is the first opportunity for you to actually custom design an astrological energy that never occurs in nature. Here, of course, the tremendous advantage of ADM over traditional “wait for a favorable time” astrological methods is obvious! In the example below the second house is energized by Taurus while Mercury has the analytical-critical energies of Virgo.

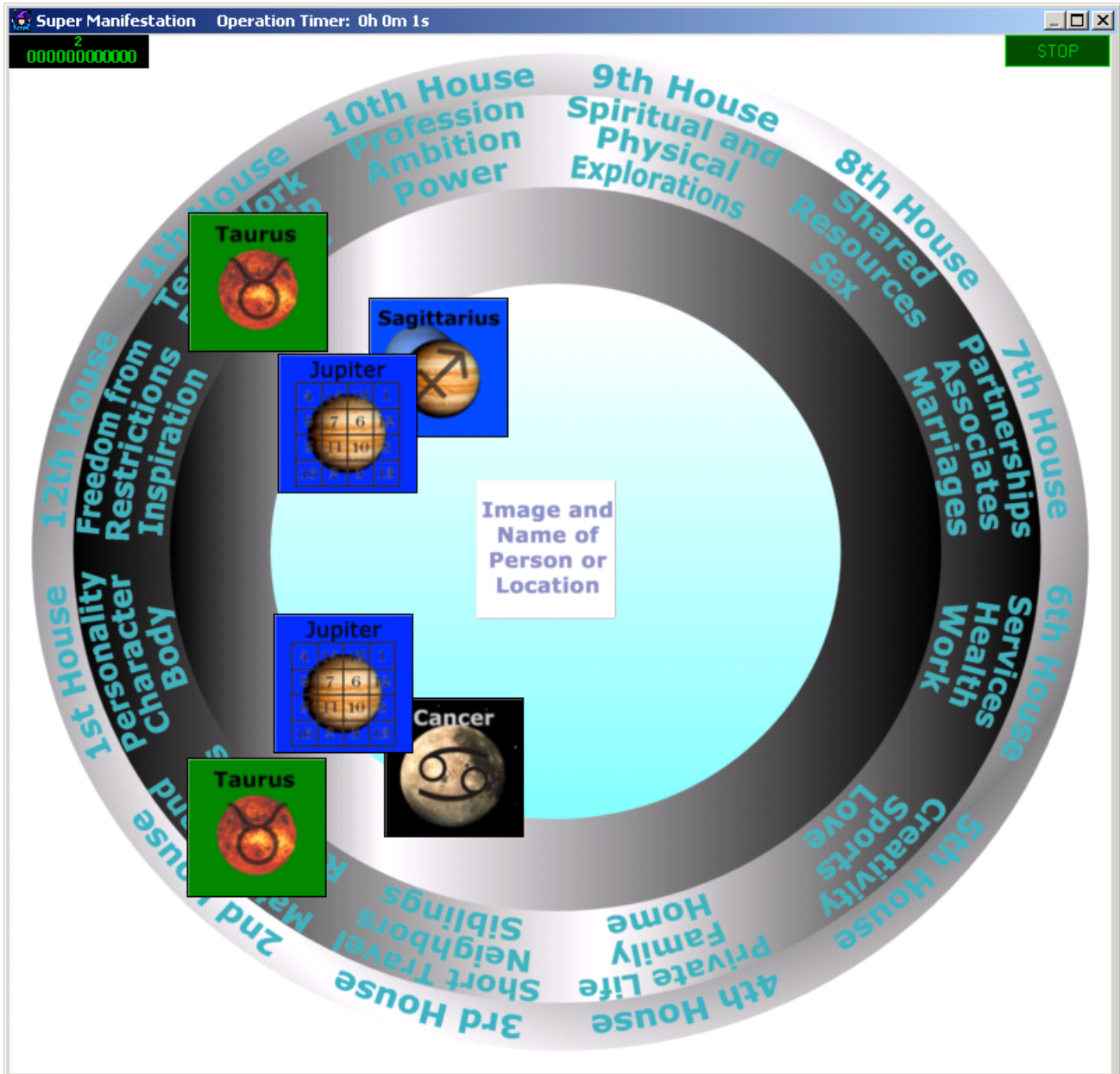


The next step: put two or more planets into one house, each one with a different sign energy or mode of inclination and motivation. To show this flexibility even more, I am showing mercury in virgo ind venus in Pisces. This type constellation between these two planets never occurs in nature.

And then, on the right side below, you can see an example of a mundane house (again the second house) with more than one sign influence (Taurus for stability and Leo for creativity), and likewise the planet in that house (Venus) has as more than one sign energy that influences its action (Libra and Pisces).



The example below shows the same planet in several houses, each time with a different set of sign energies: The second house is energized by the sign of Taurus, the eleventh house likewise (stability in finances and projects), again a position that does not occur in nature. Then we put the planet Jupiter into both mundane houses to promote expansion in these areas, and Jupiter is energized by Sagittarius in one case (free-wide planning energies) and Cancer in the other (protective expansion).



5. Examples of success strategies and effective trend management for advanced users who decide to reach the top

When beginning to use the Chi Generators® (with or without the Manifestation Programs) for ADM, naturally most persons are very successful with it. This is so, because it works for most things that they envisioned originally without prior training. Very often the reason for success is that the work with the Chi Generator® and manifestation program provides this extra little push in situations that have long been evolving, that were ready to manifest, and where a minor adjustment was sufficient to succeed.

Sometimes, however, there are instances when the best efforts seem to fail. This usually happens later, and only a few persons using ADM techniques have experienced this challenge right at the beginning. When such things happen, the main reasons for such failure are:

- 1. Misjudgment of availability**
- 2. Misjudgment of the situation**
- 3. Misjudgment of personal capability**
- 4. Misjudgment of personal attitudes and unawareness of personal interferences, idealism, etc.**
- 5. Misjudgment of subconscious blockages and subconscious interferences**
- 6. Misjudgment or unawareness of interferences from the people, from their environment and outside interferences**
- 7. Misjudgment of the “climatic background of trends” and cultural environment at the time of the operation.**

Here we will deal first with the various reasons for delays or even failures in general and give you an idea of how to develop a success strategy from a thorough analysis of the challenges that you face. Later we will continue to work on specific areas where failure can occur and replace them with appropriate success strategies. This will help you to work with specific examples. Based on this experience you will then be able to develop the most effective methods to achieve success.

Finally, we transform, in general terms, these challenges to a “wheel of success” where you find the preconditions that you need to establish when going for supreme success in any field!

5.1. The pitfalls in more detail: Examples

Here we are dealing point by point with the roots of the difficulty, i.e., the various misjudgments of important facets of any failed operation.

5.1.1. Misjudgment of availability

Examples:

a) Attempts to get the one and only one big win in a lottery. For instance, if there is only one grand prize in a lottery, only one person will get it, no matter how many people are using equipment to get that big one, who pray and what not. Well known are of course the massive interferences when someone attempts to beat incredible odds to get some of these famous jack pots! Even if you can use the equipment to up your odds three fold, even ten fold, you would need to wait a statistical average of 100,000 drawings instead of 1 million drawings to get such a “big one”. So it will work, provided you give it enough time and a substantial investment of money. Of course, statistical averages are statistical averages. You may hit it as well tomorrow with a single

ticket! Some of the gods to whom "wannabee" winners pray must be quite annoyed, considering that of a million or so prayers to them for the "big one" all are doomed to fail, with the exception of one, provided, of course, that a person who prayed gets that big one and not one who has an orgone radionics device!

b) Attempts to get a specific famous person as a lover. This situation is similar to the one as above (availability of the big win), especially if the would-be lover has nothing to offer in return (as is usually the case) and is one of the many others who bug those folks with that annoying "fan" mail, which their secretaries rightfully ditch. I knew one person who wanted Ted Turner and stressed that she had the greatest ideas of how he could be even more successful in business. Naturally, she overlooked the "little detail" that she had not the business savvy to afford more than living in a dump! A season ticket for a seat close to her "target" in the baseball arena did as little as the many spells and rituals that she performed.

c) Attempts to strike it rich in a business venture that promises wealth to its marks, but that's in the main established and structured to bring some wealth to the corporation only which sells these "opportunities". Typically, most MLM (multi level marketing) scams fall into this category.

5.1.2. Misjudgment of the situation

Examples:

a) Attempts to draw a partner who loves city life, wanting that she/he exchanges that for primitive conditions in the country with nothing in return.

b) Attempts to draw a specific partner for sex only if that person has extreme reservations against that, possibly also subconscious fears, etc

5.1.3. Misjudgment of personal capability

Examples:

a) Attempts to "get money fast" when absolutely no skill can back up that wish.

b) Attempts to be immediately successful in a profession of which the operator has little or no experience at all. If you want to be successful a doctor, you need to have learned the skill and received your licenses previously - or (hopefully not) be skilled in faking it. Weekend success seminars training "positive thinking" and visualization do the trick - for the promoters! Of course, if you know of someone who, standing in front of the mirror, repeating "medicine, medicine, medicine ..." over and over again, visualizing himself being an MD, who actually was an MD after a couple of weeks, I will gladly revise this opinion concerning robbin success mongers.

c) Attempts to draw a partner for sex when the operator him/herself is incapable to that - for whatever reason.

d) Attempts to get a top of the line lover when looking like a dog, lacking personal hygiene, lacking manners and lacking other items that such a partner would like to see

e) Attempts to make a big showing in music without the skills to play an instrument, without charisma and without capability to deal with producers once the window of opportunity is open.

... and a lot more, many of whom I met and could help them by changing their outlook and developing the appropriate success strategy.

5.1.4. Misjudgment of personal attitudes and unawareness of personal interferences

Examples:

- a) When trying for wealth, the attitude that it is undeserved.
- b) When trying for love, the attitude that it is bad, or worse, an obsession for a specific person. As far as the latter case is concerned, even the gods are helpless in the face of stupidity.
- c) When trying to hold a lover, to be unreasonably jealous and demanding at the same time.
- d) When trying to get a lover back, obsession that obscures everything else. Think of someone who is obsessed with a specific woman (a weakness that is radiated out, most of the time), is timid (another weakness), lacks personal hygiene, is outright filthy, etc. Imagine that this person hopes that setting a device will cause that lady (who, like most sane persons, neither wants weak partners, nor timid ones, nor stinking ones that obviously don't care about their appearances) to knock at the door the same midnight, asking him to go to bed with her. Well, that will not work and the energy radiated out may even have an opposite effect, since it likely can cause the woman think of a filthy pig and is annoyed.

5.1.5. Misjudgment of subconscious blockages and subconscious interferences

Examples:

- a) Subconscious fears and ideas that were instilled during the course of education or that resulted from traumatic experiences.
- b) The fear of sex and healthy relationships that resulted from severe abuses in childhood

5.1.6. Misjudgment or unawareness of interference from the environment

Examples: peer pressure, religion, hostility of people whose help is needed

5.1.7. Misjudgment of the "climatic background of trends" at the time of the operation

Examples: This is similar to the above, and concerns more the trends that are going on in society at the time of operation. Trying to sell stocks at a high price at times when the stock market is bearish will not work. Trying to sell propane gas for heating in summer at winter prices will also be very difficult to do. Attempts to strike it rich quick in a profession for which there is no demand in society: Ever played with the idea of selling 100 coaches with horses to be used in the center of New York?

Often the problems are less obvious, especially when the operator has to deal with challenges that concern wishes that seem more available, more legit. Sometimes such operators begin to work on desires and wishes for things that they do not really want. A thorough analysis of one's own desires is necessary in such a situation. The equipment certainly can help finding out subconscious blockages, legitimate and irrational ones. As far as irrational blockages are concerned, they can be re-directed and actually be useful in other activities, where their impact matters, while "staying away" from the activities in which you want to be successful.

In “old language” (coming from times when nothing whatsoever was known to humans about the subconscious and its function), such irrational, often self destructive, actions have been seen differently. People thought of them as coming from the “mysterious wisdom, will and ways” of a deity. In such a case, the religious conditioning of the “I don’t deserve” type plays a big part. They may also attribute failures to the continuous foul play of “entities, demons, ancestors” or the like that may act outside the individual or act as “attachments” from within. The practice to deal with these situations consisted of getting rid of the entities. The tasks of such entities were often re-assigned. Another practice was to replace them with stronger entities that are more sympathetic to the wishes of the person in question.

You can use the equipment regardless what type mapping you prefer. Sometimes animistic thinking, i.e., populating the world with myriads of personified entities, can be more useful, at others the mapping of subconscious parts of the personality, and at others the mapping that deals with trends as energy fields that in many cases have a characteristic of personification. In any one of these approaches, when re-assigning tasks, analysis of mechanisms of failure and the setting up of specific success strategies can be a decisive help in achieving your goals. Again, your equipment helps not only in these tasks, but also in assuring permanence of the results. In any one of these approaches (animistic mappings of “entities”, the more recent mapping of a “subconscious”, or a more dynamic mapping that involves fields of “trend energy” that surround you, or a combination of all), the effects will be the same if you develop a good success strategy for the result that you wish to manifest.

5.2. Potential Solutions - the wheel of success!

1. Check for availability. Make sure that what you intend to achieve is doable
2. Analyze the situation and the potential for success it offers
3. Determine personal capability and readiness for the task. If missing, generate ways of the quickest possible achieving of capability.
4. Analyze personal attitudes and your own interferences, idealism, etc. If necessary, take steps to overcome them. Exhibit a positive attitude!
5. Be aware of subconscious blockages and subconscious interferences. Set up operations to re-assign them, if needed
6. Be aware of interferences from the people-environment and outside interferences. Counteract peer pressure and magickal interference from other people.
7. Generate a positive “climatic background of trends” and deal with the religious-cultural environment at the time of the operation.

All this has to be done before you begin with the actual operation. Just one of these points ignored, misjudged, and not acted upon can be a reason for failure of the operation! If needed, set your device to help you taking stock of the challenge and to build your wheel of success! Any type interference can develop into a reason for failure

Change and ultimate results will manifest, of course, whenever you can analyze the true nature of the challenge, its various aspects and if, based on that, you put appropriate success strategies into motion such as changes in attitude, changes in appearance and acquiring of the skills needed.

Success strategies are very helpful in developing a winning attitude and the inner feeling that’s so necessary for any type of success. It is a well-known fact that, **whenever there is a clash between the will to achieve a specific result and conscious or sub-conscious expectations and attitudes towards that outcome, the latter will almost always win out over sheer will power.**

Conversely, once you adjust your attitudes and expectations, conscious and nonconscious ones, towards a goal, then sheer will power is of secondary importance if needed at all. Above all, be pragmatic in your approach! Rather than aiming at a goal that’s way ahead of your status quo, compromise, approach your goal persistently step by step, and success will be forthcoming soon!

To set in motion a change of your inner expectations and attitudes is relatively easy, especially with the equipment that you have available now.

Now let's go to the practical part: Here we are going to introduce you to some typical pitfalls that invariably lead to unsuccessful outcomes and then to success strategies that can overcome these challenges and ultimately lead to the success that you desire.

5.3. The fat-buster: success strategies in weight control, or: how to get the physique that you have always wanted!

Weight control is a typical example of negative outcome where there is a clash between will and imagination/expectation. In fact, huge industries are thriving around that rather sad situation by shamelessly exploiting it.

Let's get it straight first: fat is part of us. It is storage of energy reserves that will be used in times of inadequate food supply. As a temporary measure, this seems fine and natural. Gross overweight, on the other hand, has long been proven to be a considerable health risk.

Therefore, whenever you want to lose weight, you simply use up your reserves, no less and no more is required!

Seems simple, and yet, most people have serious problems doing just that to get rid of their excess pounds.

It is possible that humans do not have much of a genetic protection against over-eating, and most certainly do most of them not act that way. That, at least, is what some people contend. Perhaps that's correct and not a lead-in publicity stunt to ready the general population for some of the more esoteric methods of genetically engineered "treatment".

Perhaps we should look at another facet of the problem. First of all, there are enough people out there who "manage" to maintain a fairly normal body weight even in times of plenty. Secondly, countries where there is ample food advertising show an excessive tendency towards gross overweight of huge parts of their populations, while in countries with plenty of food supply, but much less food advertising, such a problem does not exist. This is a situation that does not necessarily support the assumption (or cop-out) of the "genetic scapegoat". A good example is Europe, where all of a sudden gross overweight became rampant. All of a sudden? Well, this development "coincidentally coincided" with the "invasion" of the fast-junk-food industry.

In the US some 75% of TV advertising is geared towards food, almost always the rather unhealthy and fattening fast food garbage. Even in soap operas the "heroes" with whom the viewers so happily identify are eating quite a bit. If it did not work, the food industry would not go to the massive expense of working on expectation and imagery of the audiences. As a consequence of it working well, people eat more, get fatter, and feed the coffers of a ruthless industry of death and disease.

Counteracting the impact of food commercials should be the first and foremost strategy to help an overweight person. Having seen and read thousands of commercials coming from the slim-down industry, I have not noticed a single one that would describe the impact of food advertising. Strong vested interests (besides simple ignorance of the facts) may cause the slimming-industry's advertisers and executives from addressing that problem. It is certainly more profitable to thrive on guilt-feelings of the fat and not so fat people addressed by the commercials than working towards removing the root causes of gross obesity. Such action, in fact, would reduce the customer-base and market share, of course! People may then also become aware that it's not some esoteric fat-burning formulas, fast slimming fake-foods that are loaded with chemical junk, self-assertions, costly diets, surgery, 10-minutes a day exercise machines, etc. that lead to

lasting success. Quite to the contrary, simply using-up the stored energy (speak: fat), either by being more active or by supplying the body with less energy reserves (speak: food), or both, appears to be the most effective and cost efficient method! The only recommendation during such times would be that the person takes sufficient vitamins and minerals, ideally not synthetic garbage, so that there is no lack of essential substances that are needed for the proper functioning of the body.

Let's sum it up:

Potential problems:

1. Clash of expectation/imagination with will power.
2. The expectation of being powerless, mostly promoted by the food industry, but also as a "hidden expectation" in the slim-fast-down industry, will prevail over the will of the individual to lose fat. Have you ever noticed that absurdly fat person sipping on a diet drink or, worse yet, a shake of slim-quick junk first, and then gorging him or herself on half a gallon of ice cream and three MacDoodoo Burgers?
3. Paying customers remain paying customers for both branches of industry, provided that they remain fat!

Potential solutions:

1. Reduce impact of advertising from both industries. The best method is to develop inner strategies and mechanisms that create exactly the opposite of what the designers of the commercials intend to do. If possible, boycott all their products. This is definitely not intended as a message for "them", it is a working tool for you to trigger a change of attitude in your mind.
2. Develop a set of expectations and inner imagery that favors weight control.
3. Finally, develop strategies to use up the energy reserve of the body, i.e., the layers of fat. This should only be done after points 1 and 2 have been activated and completed successfully, otherwise this can turn out to be too difficult a task, perhaps even useless!
4. These success strategies can be set in motion very effectively when set up as trends with your orgone radionics™ equipment.

A Few Potential Mistakes:

1. Putting "I want to lose weight" in the machine, implying just that, i.e., that you WANT to lose weight.
2. Working with methods that do not address the basic problem of inner attitudes, expectation and self-image.
3. Lack of effective strategies against the impact of food advertising.
4. Guilt-feelings about overweight, using sheer will power alone.
5. ... (and many more)

Suggested procedure:

1. Work on food advertising: There is an appropriate filter available.
2. Develop a concentrated intent to have the perfect weight. Work on the attitude and the confidence that you can do it!
3. Enjoy food! Enjoy it every time you eat it, enjoy every bite, but enjoy it only in quantities that fit the plan and at pre-determined times. It may also be useful not to enjoy it at other times while you are on the plan.
4. Adjust the plan to what your body can handle with ease. For some people just one pound a week is optimal, others can handle a lot more. Put an inner-eco-check into your setup. Perhaps consult with a physician or health professional as to what goal you should set.
5. Set up a follow-up plan that corrects the habits for good and does not allow relapses.

5.4. Business Success, Wealth, Leadership, People Skills, and Political Success.

A good psychic friend of mine once stated the following: Basically, there are two reasons for which people come for advice to psychics: the two "aids", namely getting laid and getting paid!

Sometimes, then, the customer comes home from a psychic or from a \$800.00 weekend seminar, enriched with deepest knowledge of past lives and past life transgressions and karmic guilt accumulated therein. He or she knows now, or thinks to know, about soul mates, past and present, of pink rays, of curses from lodges with which they were involved in a past life, perhaps even of curses put onto their mother that by some quirk of destiny attached themselves to the offspring. At times long dead and totally unknown ancestors of 20 generations in the past (enough generations to have ten million offspring, even more!) are blamed for misfortune in life, who are trying to take him, chosen among the 10 million offspring, over. From other sources comes the deepest knowledge of (freely invented) "secret history of humankind" and bad karma collected during those olden times, and a host of other illuminations. This can easily distract from the basic problem for a while, even have people work (for the religious outfit, of course!) to atone for past life transgressions that likely never existed, and usually it does not solve it either!

Other good moneymakers, usually not for the attendants, and solely for the organizers, are motivational weekend seminars where the attendants are taught to awaken the giant within and the like. Teachers are all too often hailing their own greatness and tell that they have made it by exactly following that which they teach. Fact is, if someone does not have the skills to play tennis, she needs to acquire them. Standing in front of a mirror repeating "I am a great tennis player" over and over again and hoping to win the Wimbledon tournament this way is as silly as standing in front of the mirror, seeing oneself writing big checks, living in million dollar homes and driving around in sports cars that are loaded with a bunch of willing lovers waiting for the bedroom.

All this reminds me very much of the situation that I described with fat burning and a fitness industry that in some way is part of the problem rather than part of the solution! Blaming a have-not person for being in a bad financial situation usually is a distraction that does not deal with the real problem. The same can be said about the many "esoteric" reasons with which such an individual is confronted. The "esoteric clergy" proffering such reasons is not much better than the clergy of run off the mill religion who shove "God's will" down the throat of their sheep who in turn willingly and happily fatten the clerical treasuries with tithes.

For the person who is serious about success it is time to get the facts straight: Poverty is mainly a socio-economic problem. In fact, it's even more so than gross overweight! If you want riches, you need to eliminate the impact of socio-economic conditioning first and foremost and then you need to actually acquire the skills to handle wealth! No, I am not talking about changing the system. If the system was fair to all, there would not be excessive wealth at all, and possibly no incentive either. If socio-economic fairness was crucial for survival of the species, it would long have developed as a genetic trait of the species, and it did not.

If you want excessive wealth, be aware of the functions of the socio-economic system in which you live (and which in fact does allow individuals to have that unfair edge of excessive wealth) and use these functions to get where you want to be! In other words: this is a system that certainly can work in your favor as soon as you learn how to use it rather than allowing to be used by it! Feeling guilty about that? Then you are still stuck inside and victimized by the "equality-trap" that helps so nicely all those folks who are just a bit "more equal" than you and who thoroughly love that additional "equality"! Let's face it: Inequality is part of the human species, no matter what idealists or equality-mongers (that are backed by vested interests) are trying to teach you - and so are the resulting socio-economic structures in which we live! You can either live up to this fact and use the existing situation and your innate human characteristics to get ahead, or you can decide to remain the runt of the pack for the rest of your life. The choice is

yours, of course! Fact is, by now you have the equipment that can help you getting that "unfair" (a word used by people whose "unfair" intent is to keep you in your subordinate place) advantage when you set your course to reach your maximum potential of wealth, power, and/or political influence. Use it! At the same time, be aware that a human being does not end with the surface of the skin. As human beings, we are "us and our environment"! When we poison our environment with arrogance, bad action, abuse of power, etc, we ultimately poison ourselves! The runts of the pack are part of your environments, necessary to help your success! Respect them, especially when you reach the top! This makes the difference between a good leader and a bad leader!

Before you can deal with such questions, you need to get there. To do that, you need to de-program yourself and learn the skills that you need to get to the top. Once such skills are in place, you can open opportunities for yourself, and then you can learn additional skills, etc, step by step all the way to the top. Naturally, the development of successful strategies for business success, wealth, and political power is more complex than was developing a strategy for weight control. Use your orgone radionics setup to maximize this task, and then use the device to open opportunity and to help you get to the top.

Below you find a list of pointers. Use what you consider appropriate for your situation.

Situation analysis for wealth, power, leadership, people skills

Get the facts straight about society and socio-economic environment!

Get the facts straight and study human characteristics. We are a predator society of leaders and runts

Get the facts straight about education. Have you ever noticed during your education that school kids from influential parents get away with things that others never would get away with? Don't mope about it, learn from it!

Schools fit people into roles of leaders and runts. Therefore, the education of "social skills" is considered "more important" than the teaching of other skills!

The structure of the leadership of super-tribes (nations) is similar to the structure of tribes.

Niches for dominant people who do not make it politically: Leadership in business, in organizations, control of wealth, professional leadership, etc

Getting things done vs. "being nice"

Your situation: taking stock and setting goals

Set long-term goals

Set short-term goals

Establish what skills you need for these goals, what skills are demanded; what changes of attitude you need to be successful. Follow through with action and boost it with radionics.

Consider alternatives with similar basic demands and solutions, if availability of your goal is low.

"Tremendous financial success from an unexpected source ..." the use of wild cards, advantages and disadvantages

Set yourself up so that you enjoy that which you are doing.

Potential Basic problems and mistakes

The runt mentality, a result of the educational process: in school, people "learn their place" in a hidden curriculum! Check out how it afflicted you and avoid the pitfalls

The impact of religion: "you have to work hard to earn your daily bread" (have you ever met a priest or preacher doing just that, i.e., being happy with "bread"????)

Lack of knowledge of communications

Assuming "giftedness" rather than skills - and giving up

Using strong points of your situation

Set yourself up to get the right strategy as much as possible and as often as possible

Set yourself up to get viable opportunities.

Be ready for a big change

Make sure that the changes will be profitable as well

Figure out the time to acquire skills

Going step by step - a plan for yourself

Learn communicative skills, Boost learning of communicative skills

Learn to read people

Learn to read the body language of others

Learn to influence people

Acquire power mimicry

Develop opportunities where you can use and refine such skills progressively:

Determine the direction that you take: get ahead first using the skills that you have while acquiring new skills, then the next step with the acquired skills, and so on. Acquire skills and earn while learning, if possible

Boost charisma and other skills

Use equipment to boost your position of power in specific situations

Get increasingly into the procedures of the chosen business, become proficient in methods of marketing, manufacturing, or running the business.

Boost your skills to analyze several situations and select the best ones for your success.

Potential Mistakes

"I am powerful" in front of the mirror

Ignoring the skill factor, hoping that there is "magick" that puts you into a wealth-and power position without you needing to learn anything or contribute anything to this process.

For these advanced situations the radionics program is a significant help! We also suggest that you work at least with one heavy duty device!

Further success strategies are in preparation, plus more detailed strategies concerning business, money, and power.

5.5. The Ladder of Success

1. Analyze the situation, then, based on that, develop the strategy.
2. Work on your attitude - set attitude work as a continuous function
3. Develop your skills - set skill orientation and skill development as a continuous function
4. Eliminate outside interferences, set "wild card"
5. Prepare the general environment. Protect against repercussion.
6. Prepare the specific environment (people involved)
7. Set to least effort for maximum result.
8. Set trends to hold result(s), once achieved
9. Go for the result (the actual trend energy) - If a far reaching result is a goal, set wild card for the next step and for the most effective method to go through points 1 through 9 again!

Work on each of these points with a separate setup. You can run many of them during the same preparatory time. Avoid running them simultaneously!

Set your equipment for analysis at the beginning. This setting will provide you with important insights in the characteristics and intricacies of the situation that you intend to influence in your favor. Do not do anything else during that time of analysis. Continue with the next steps of your ladder of success when you are certain that you understand the subject matter and that are ready to flesh-out these steps of success with the appropriate trends, or action. Go these steps one by one at first. Then you can work on points 2 through 6 during the same time of preparation, but never simultaneously! Give each of the points there one or two hours daily of energy work with the orgone radionics setup. Follow up with action on your part such as learning the necessary skills.

When you think that you have prepared yourself sufficiently, make another analysis based on the new situations. If this analysis checks out well, go step by step from 4 through 9.