



- **Jackson Creek Parkway Widening**
- **Highway 105A Construction**

# Public Meeting

A collaborative effort

Introductions

May 23, 2023

# Jackson Creek Parkway



NTP



READY Phase 1

Q2 2023

WE ARE HERE



SET Phase 2

Q4 2023

Q1 2024



Pending Funding

GO Phase 3

MAJOR WORK ELEMENTS

**Data Collection**  
 Survey  
 Traffic data  
 PPAAG model  
 Geotechnical borings 1  
 Approved plans/studies  
 SUE - quality level D/B  
 Existing inventory  
 Roadside safety  
 Inspections/site visit

**Define Goals & Objectives**  
 Safety  
 Access  
 Travel time  
 Economic vitality  
 Others?

**Develop Alternatives**  
 Jackson Creek Parkway  
 Construction phasing  
 Intersections  
 Non-motorized  
 Aesthetics  
 Stormwater  
 Water quality  
 Plan compliance - 105 operations  
 Others?

**Alternative Screening**  
 Develop screening criteria  
 Level 1 qualitative screening  
 Level 2 quantitative screening

**Identify Preferred Alternative**

**Develop Funding Strategies**

**Supplemental Data**  
 Survey  
 SUE - quality level B/A  
 Structural borings 2

**Preliminary Design**  
 Design layout/modeling  
 Landscape impacts & opportunities  
 Plan set development  
 Preliminary drainage report  
 Preliminary geotech report  
 Paving report  
 Specifications outline  
 Preliminary estimate  
 Constructability review  
 QA/QC

**Supplemental Data**  
 Survey  
 SUE - quality level A

**Implement Funding Strategy**

**Final Design**  
 Address FIR comments  
 Final plan development  
 Final streetscape/ LA plans  
 Environmental plans  
 Final drainage report  
 Final Geotechnical report  
 Final specifications  
 Final estimate  
 Constructability review  
 QA/QC

**Bid Support**  
 Address FOR comments  
 Ad set development  
 Final spec refinements  
 Final estimate/bid list  
 QA/QC

Advertise PreBid Meeting

Construction Management

RFI & Shop Drawing Review

ENGAGEMENT

**Stakeholder Database**  
 YMCA  
 Lewis Palmer High School  
 CDOT  
 Hwy 105 Corridor Study  
 PPAAG  
 El Paso County  
 Woodmoor Improvement Association  
 Jackson Creek Commercial Metro District

Triview Metro District  
 Woodmoor Open Space committee  
 Jackson Creek Commercial Metro District  
 Penrad Imaging  
 Jackson Creek Senior Living  
 Major adjacent properties

**Public Involvement Plan**

Monument Junction Construction - Classic

FIR (30%) Review Meeting

ROWPR Meeting

FOR (90%) Review Meeting

Property acquisition 9-12 months

ENVIRONMENTAL/CLEARANCES

**CDOT Environmental Scoping Meeting**  
 Determine the environmental resources that will need to be evaluated and the NEPA process. It is anticipated that a Non-programmatic CatEx will be required based on early observations.

**Existing Conditions**  
 Mapping, field visit  
 Environmental receptor evaluations

**Purpose and Need Documentation**

**Screening for Avoidance**  
 Level 1 qualitative screening  
 Level 2 quantitative screening

Identify Impacts

Resource Documentation

Form 128 CatEx First page

Form 128 CatEx Second page

Permitting and Mitigation



JACKSON CREEK  
PARKWAY  
CORRIDOR



# Public Meeting

## Project Background

*May 23, 2023*



# Public Meeting

## Existing Traffic and Operations



### Minor Collector

- LEGEND**
- X/X = AM/PM Peak Hour Signalized Intersection Level of Service
  - x/x = AM/PM Peak Hour Individual Movement Level of Service
  - = Traffic Signal

JACKSON CREEK  
PARKWAY  
CORRIDOR

May 23, 2023



JACKSON CREEK  
PARKWAY  
CORRIDOR



# Public Meeting

## Project Background

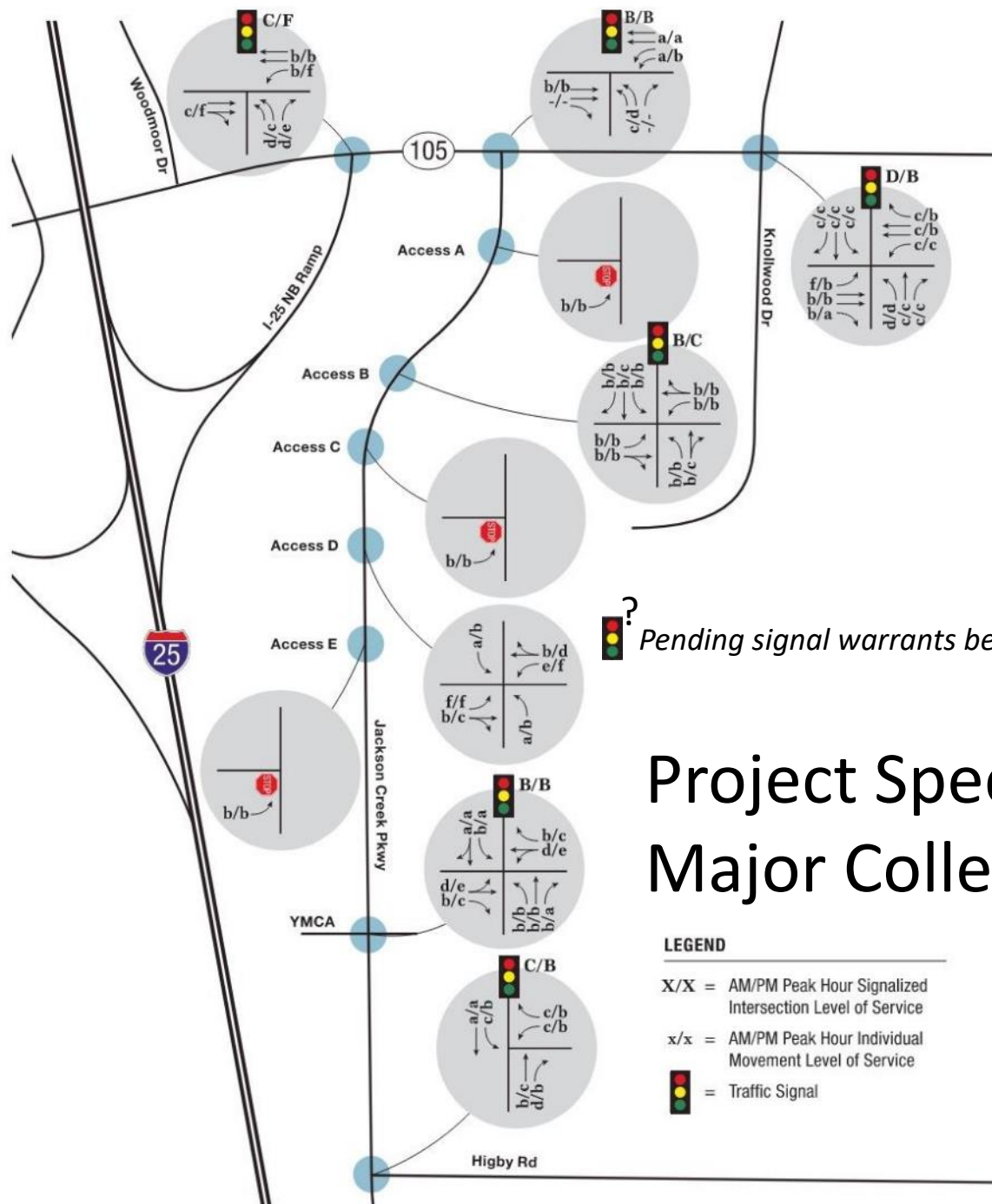
*May 23, 2023*



# Public Meeting

## 2045 Traffic and Operations

### Project Specific Major Collector



Pending signal warrants being met

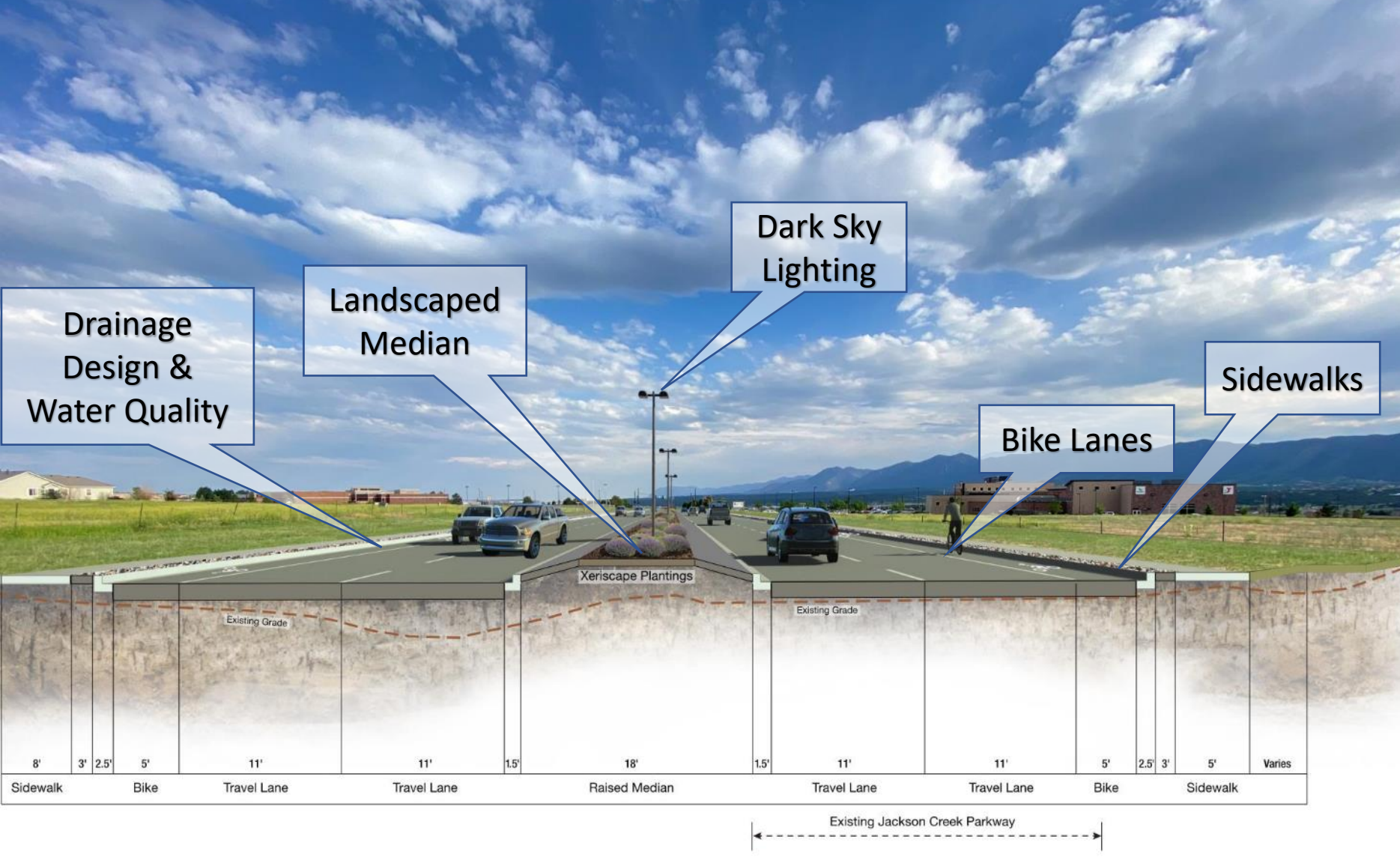
#### LEGEND

- X/X = AM/PM Peak Hour Signalized Intersection Level of Service
- x/x = AM/PM Peak Hour Individual Movement Level of Service
- = Traffic Signal



# Public Meeting

## Project Background



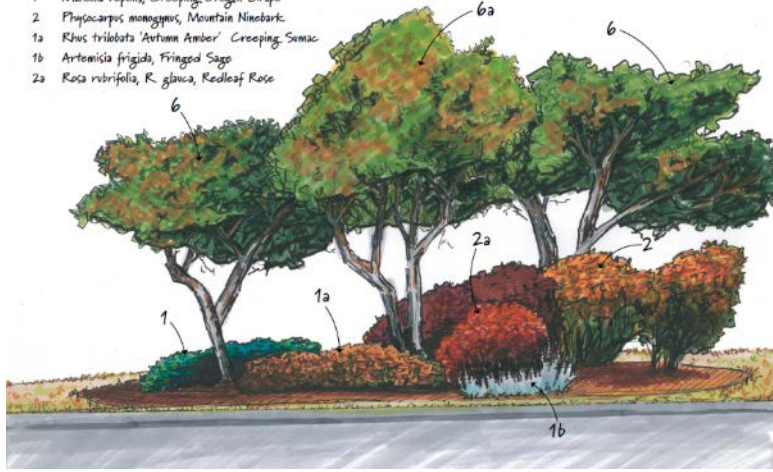
JACKSON CREEK  
PARKWAY  
CORRIDOR

May 23, 2023

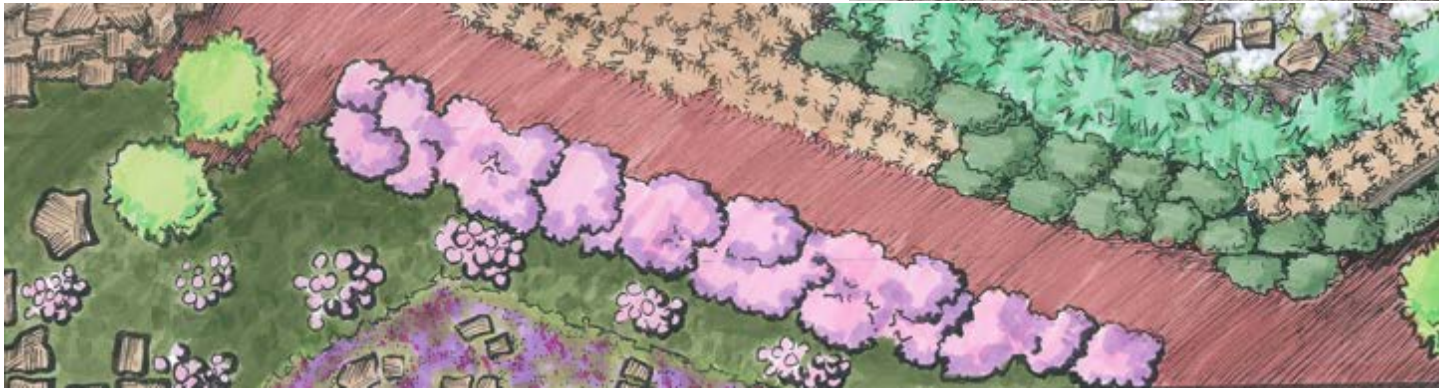
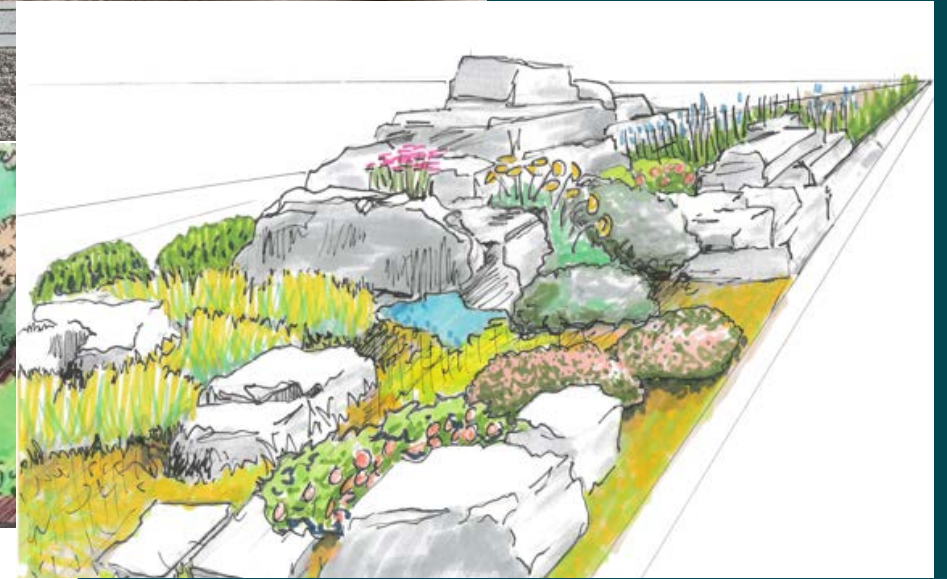


Mowable Prairie Zone - Tree Groupings C1

- 6 Quercus gambelii, Gambel Oak
- 6a Crataegus douglasii, Douglas Hawthorn
- 1 Mahonia repens, Creeping Oregon Grape
- 2 Physocarpus monogynus, Mountain Ninebark
- 1a Rhus trilobata 'Autumn Amber' Creeping Sumac
- 1b Artemisia frigida, Fringed Sage
- 2a Rosa rubrifolia, R. glauca, Redleaf Rose



# Raised Median Landscaping Concepts





PROJECT A - Q2 2023  
BY CLASSIC FOR TOWN OF MONUMENT



**TIMELINE Q2 2023 - 2025**



# Public Meeting

## Project Timeline A-B



May 23, 2023



# Public Meeting

Project Timeline  
Project A by  
Classic



May 23, 2023

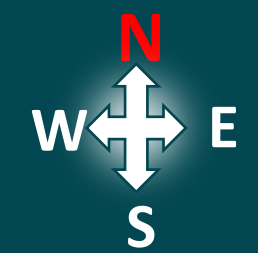


JACKSON CREEK  
PARKWAY  
CORRIDOR

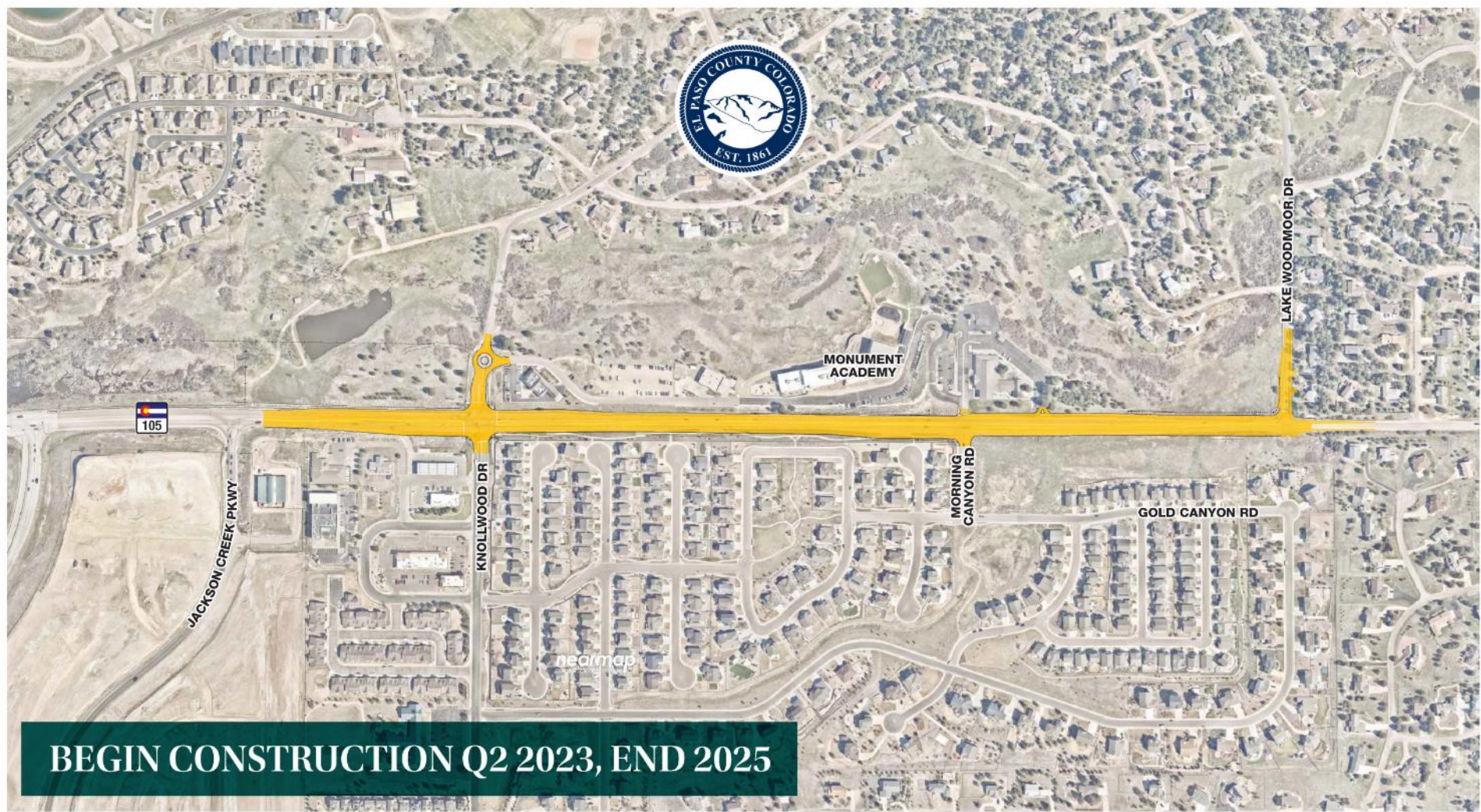


# Public Meeting

## Project Timeline Project B by El Paso County



May 23, 2023



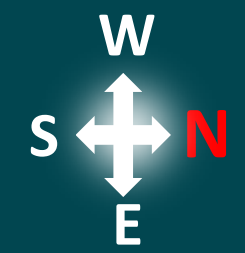
**BEGIN CONSTRUCTION Q2 2023, END 2025**

JACKSON CREEK  
PARKWAY  
CORRIDOR



# Public Meeting

## Project Timeline C-D



May 23, 2023

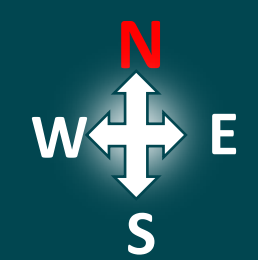


JACKSON CREEK  
PARKWAY  
CORRIDOR



# Public Meeting

Project Timeline  
Project C by  
Kimley-Horn

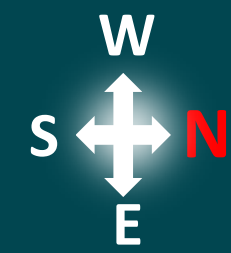


May 23, 2023



# Public Meeting

Project Timeline  
Project D by  
Classic



May 23, 2023



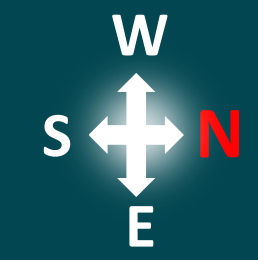
**BEGIN CONSTRUCTION Q1 2024, END 2026**

JACKSON CREEK  
PARKWAY  
CORRIDOR



# Public Meeting

Project Timeline  
Project E by  
FHU



May 23, 2023



**BEGIN CONSTRUCTION Q3 2024, END 2026**

JACKSON CREEK  
PARKWAY  
CORRIDOR



# Jackson Creek Parkway

Thank you!



# Stay Informed

- *Recorded Message Phone: 719-423-8100*
- *Sign up for project updates by sending an email to:*  
[Hwy105aConstruction@gmail.com](mailto:Hwy105aConstruction@gmail.com)  
[JacksonCreekPkwy@gmail.com](mailto:JacksonCreekPkwy@gmail.com)
- *Websites:*  
<http://EPC-Hwy105AConstruction.com/>  
<https://www.jacksoncreekpkwy.com/>

JACKSON CREEK  
PARKWAY  
CORRIDOR

