

Central neural pathways for thermoregulation

Shaun F. Morrison¹, Kazuhiro Nakamura²

¹*Division of Neuroscience, Oregon National Primate Research Center, Oregon Health & Science University, 505 NW 185th Avenue, Beaverton, OR 97006 USA,* ²*Career-Path Promotion Unit for Young Life Scientists, Kyoto University, Yoshida-Konoe-cho, Sakyo-ku, Kyoto 606-8501, Japan*

TABLE OF CONTENTS

1. Abstract
2. Introduction
3. Temperature sensation
 - 3.1. Cutaneous thermal receptor afferent pathway
 - 3.1.1. Cutaneous thermoreception
 - 3.1.2. Dorsal horn
 - 3.1.3. Lateral parabrachial nucleus
 - 3.2. Visceral and spinal thermal receptor afferents
 - 3.3. Temperature sensation within the preoptic area (POA)
 - 3.4. Sensorimotor integration of thermoregulation in the POA
 - 3.4.1. Role of POA neurons in the cold-defense responses to cutaneous thermal afferents
 - 3.4.2. Febrile response to the pyrogenic mediator, prostaglandin (PG) E₂
4. Pathways to thermoregulatory effectors
 - 4.1. Thermoregulatory behavior
 - 4.2. Cutaneous vasoconstriction (CVC)
 - 4.3. Thermogenesis in brown adipose tissue (BAT)
 - 4.3.1. Rostral ventromedial medulla contains BAT sympathetic premotor neurons
 - 4.3.2. Dorsomedial hypothalamus (DMH) neurons drive BAT thermogenesis
 - 4.3.3. Spinal sympathetic mechanisms controlling BAT thermogenesis and CVC
 - 4.4. Cardiac thermogenesis
 - 4.5. Shivering thermogenesis
 - 4.6. Evaporative cooling
5. Summary and perspective
6. Acknowledgement
7. References

1. ABSTRACT

Central neural circuits orchestrate a homeostatic repertoire to maintain body temperature during environmental temperature challenges and to alter body temperature during the inflammatory response. This review summarizes the functional organization of the neural pathways through which cutaneous thermal receptors alter thermoregulatory effectors: the cutaneous circulation for heat loss, the brown adipose tissue, skeletal muscle and heart for thermogenesis and species-dependent mechanisms (sweating, panting and saliva spreading) for evaporative heat loss. These effectors are regulated by parallel but distinct, effector-specific neural pathways that share a common peripheral thermal sensory input. The thermal afferent circuits include cutaneous thermal receptors, spinal dorsal horn neurons and lateral parabrachial nucleus neurons projecting to the preoptic area to influence warm-sensitive, inhibitory output neurons which control thermogenesis-promoting neurons in the dorsomedial hypothalamus that project to premotor neurons in the rostral ventromedial medulla, including the raphe pallidus, that descend to provide the excitation necessary to drive thermogenic thermal effectors. A distinct population of warm-sensitive preoptic neurons controls heat loss through an inhibitory input to raphe pallidus neurons controlling cutaneous vasoconstriction.

2. INTRODUCTION

The regulation of body temperature is one of the myriad of interrelated functions essential to the maintenance of homeostasis that are controlled primarily through dedicated pathways in the brain. Significant deviations in cellular temperature alter a variety of molecular properties, including reduced enzyme efficiency and altered diffusion capacity and membrane fluidity, which reduce critical cellular functions, including energy availability and membrane ion fluxes. The consequences of such changes in the mammalian nervous system include loss of consciousness and the inability to coordinate and execute motor activities. This is exhibited in a reversible manner in hibernating mammals where falls in brain temperature to 5°C are associated with torpor, inactivity and a dramatic fall in energy expenditure. Although recovery is possible from such seemingly large reductions in brain temperature, much less dramatic increases in brain temperature are incompatible with life. Hence, although not as immediately critical as the availability of oxygen and glucose, the brain is highly attentive to the potential for alterations in the temperature environment of its resident neurons and of the many tissues on which it depends for survival. This review will describe our current understanding of the core central thermoregulatory network

CNS pathways for thermoregulation

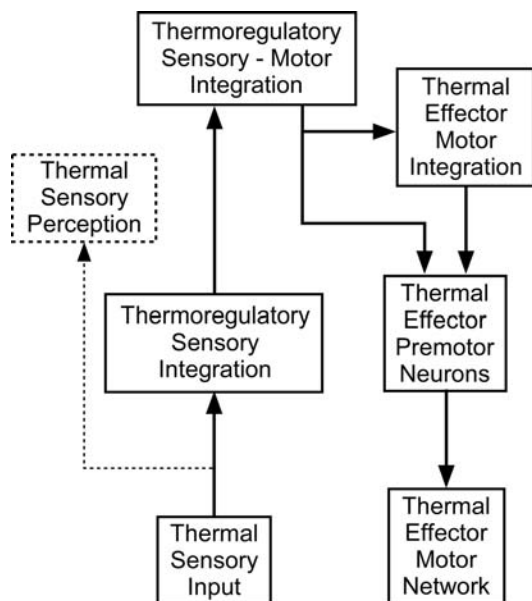


Figure 1. Block diagram of the functional components of a model for the central neural circuit providing cutaneous thermal afferent and thermally-sensitive neuronal control of thermoregulatory effectors. Thermal sensory signals are conveyed via separate pathways to sites involved in conscious perception and localization of thermal sensation and in the integration of thermal sensory information with other sensory inputs that influence thermoregulatory responses. Thermoregulatory sensory-motor integration: integrated cutaneous and visceral thermal sensory signals influence the discharge of effector-specific populations of hypothalamic, thermally-sensitive neurons with projections to motor regions controlling thermal effectors. Thermal effector motor integration: thermally-modulated inputs are integrated with non-thermal signals that contribute to the regulation of the activity of neurons that provide an excitatory drive to the premotor neurons controlling thermal effectors. Thermal effector premotor neurons: supraspinal neurons with descending inputs to spinal motor networks controlling thermal effectors.

(Figure 1): the central neural pathways that transmit ambient temperature signals, the hypothalamic networks that receive and integrate them with brain temperature information and the circuits through which the various patterns of thermal effector responses are orchestrated to sustain a homeostatic brain temperature.

The core central thermoregulatory network comprises the fundamental pathways through which cutaneous and visceral cold and warm sensation and/or reductions or elevations in brain temperature elicit changes in thermoregulatory effector tissues to counter or protect against changes in the temperature of the brain and other critical organ tissues. The effector mechanisms for cold defense, recruited in order of increasing energy costs, include thermoregulatory behavior to reduce heat loss, cutaneous vasoconstriction (CVC) to conserve heat in the body core, piloerection, non-shivering thermogenesis in brown adipose tissue (BAT) and shivering thermogenesis

in skeletal muscle. For example, a functional neuroanatomical model of the core pathways providing the thermoregulatory control of CVC, BAT and shivering thermogenesis is illustrated in Figure 2. Mechanisms for heat defense include thermoregulatory behavior to increase heat loss, cutaneous vasodilation to facilitate heat loss by conducting heat from the body core to the body surface and evaporative cooling through sweating, saliva spreading or panting, employed to differing degrees by different species. Although the experimental basis to be described for the model in Figure 2 has been determined largely from studies in rodents and often under anesthetized conditions, the fundamental neural circuits elucidated through this work are expected to exist across a wide variety of species in which the above-mentioned thermoeffector mechanisms play significant roles in body temperature regulation. It will not be surprising to find, however, that the level of the central representation and the neurotransmitter modulation of the control of different thermoeffectors will vary among species according to the evolutionarily-determined significance of a particular effector system in their thermoregulatory repertoire. For example, although the fundamental pathways controlling sweating and panting are expected to be conserved in the relatively hairless human and in the dog or rodent, their relative levels of neural representation and of modulation by different transmitters should be appropriate for their respective importance in heat dissipation in these species.

Many of the tissues recruited in patterns of thermoregulatory responses also serve other functions – as examples, BAT plays a role in the metabolic regulation of energy stores, skeletal muscle is primarily involved in posture and movement and the salivary glands participate in digestion – and organ systems such as the cardiovascular and respiratory systems, principally involved in nutrient and oxygen delivery and in waste removal, although indispensable for many aspects of thermoregulation, are more directly responsive to non-thermoregulatory demands. Indeed, one of the most intriguing aspects of central homeostatic regulation is the resolution of the ‘conflicts’ implicit in treating the regulation of each homeostatic variable independently – for instance, how is the ‘decision’ made to sacrifice heat defense in favor of blood volume during prolonged exposure to a hot environment. This review will be concerned primarily with the fundamental neural pathways underlying the thermoregulatory responses of the principal thermal effector mechanisms mentioned above, with only brief comments on the often-critical interactions within the web of thermoregulatory and “non-thermoregulatory” control systems that are interleaved to achieve homeostasis.

3. TEMPERATURE SENSATION

3.1. Cutaneous thermal receptor afferent pathway

3.1.1. Cutaneous thermoreception

To defend the thermal homeostasis of the brain and body from a variety of environmental thermal challenges, the thermoregulatory system must initiate defensive thermoregulatory responses before changes in environmental temperature affect body core temperature.

CNS pathways for thermoregulation

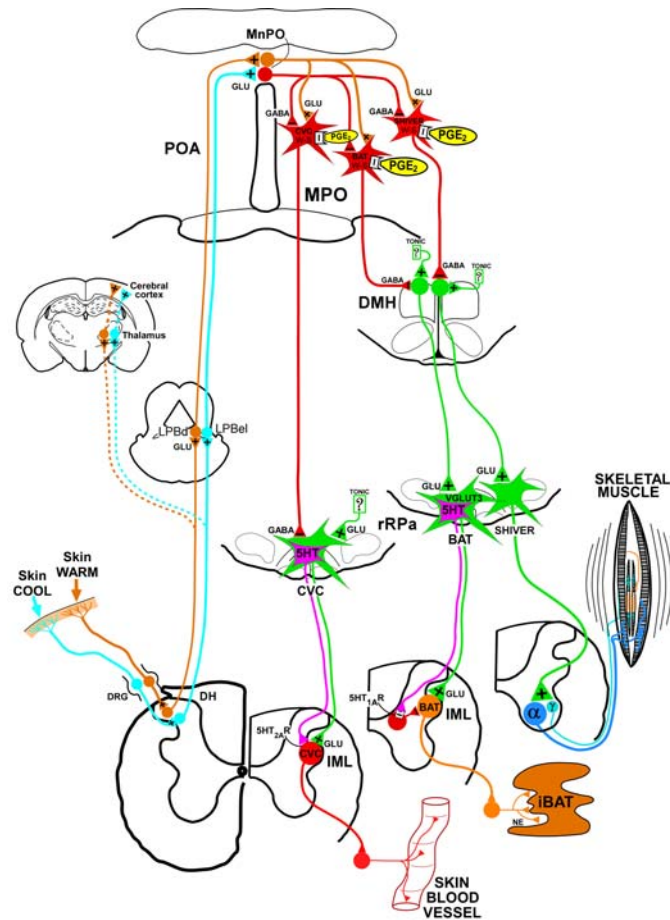


Figure 2. Functional neuroanatomical and neurotransmitter model for the fundamental pathways providing the thermoregulatory control and pyrogenic activation of CVC, BAT and shivering thermogenesis. Cool and warm cutaneous thermal sensory receptors transmit signals to respective primary sensory neurons in the dorsal root ganglia (DRG) which relay this information to second-order thermal sensory neurons in the dorsal horn (DH). Cool sensory DH neurons glutamatergically activate third-order sensory neurons in the external lateral subnucleus of the lateral parabrachial nucleus (LPBel), while warm sensory DH neurons project to third-order sensory neurons in the dorsal subnucleus of the lateral parabrachial nucleus (LPBd). Thermosensory signals from DH neurons are also relayed to the thalamus and then to the cortex for conscious thermal perception and localization. Thermosensory signals for thermoregulatory responses are transmitted from the LPB to the preoptic area (POA) where GABAergic interneurons in the median preoptic (MnPO) subnucleus are activated by glutamatergic inputs from cool-activated neurons in LPBel and inhibit the distinct populations of warm-sensitive (W-S) neurons in the medial preoptic (MPO) subnucleus that control cutaneous vasoconstriction (CVC), brown adipose tissue (BAT) and shivering. In contrast, glutamatergic interneurons in the MnPO, postulated to be excited by glutamatergic inputs from warm-activated neurons in LPBd, excite W-S neurons in MPO. Prostaglandin (PG) E₂ binds to EP3 receptors on W-S neurons in the POA to inhibit their activity. Preoptic W-S neurons provide thermoregulatory control of CVC by inhibiting CVC sympathetic premotor neurons in the rostral ventromedial medulla, including the rostral raphe pallidus (rRPa), that project to CVC sympathetic preganglionic neurons in the intermediolateral nucleus (IML). CVC premotor neurons can increase CVC sympathetic tone by release of glutamate and/or serotonin (5-HT) within the IML. Preoptic W-S neurons providing thermoregulatory control of BAT thermogenesis inhibit BAT sympathoexcitatory neurons in the dorsomedial hypothalamus (DMH) which, when disinhibited during skin cooling, excite BAT sympathetic premotor neurons in the rRPa that project to BAT sympathetic preganglionic neurons in the IML. Some BAT premotor neurons, containing vesicular glutamate transporter 3 (VGLUT3), can release glutamate to excite BAT sympathetic preganglionic neurons and increase BAT sympathetic nerve activity by release of glutamate, while others can release 5-HT to interact with 5-HT_{1A} receptors, potentially on inhibitory interneurons in the IML, to increase the BAT sympathetic outflow and thermogenesis. Preoptic W-S neurons provide thermoregulatory control of shivering responses by inhibiting shivering-promoting neurons in the DMH which are postulated to provide excitation to medial medullary shivering premotoneurons in the rRPa, that project to the ventral horn to excite alpha and gamma motoneurons during shivering in skeletal muscles.

When the skin is cooled in rats, for example, sympathetic thermogenesis in BAT and a tachycardia are elicited

rapidly before the core or brain temperatures fall (Figure 3) (1). In unanesthetized animals, the core and brain

CNS pathways for thermoregulation

temperatures are not affected or are slightly increased during exposure to a cold environment (2, 3). Such rapid thermo-defensive responses are elicited by sensing changes in environmental temperature through thermoreceptors in primary sensory nerve endings distributed in the skin and by transmitting the sensory information in a feedforward manner to the preoptic area (POA), a sensori-motor integration site for thermoregulation located rostral to the hypothalamus.

The molecular mechanisms of cutaneous thermoreception have been extensively investigated and recent studies suggest that the transient receptor potential (TRP) family of cation channels mediates thermal sensation across a broad physiological range of skin temperatures. However, none of these TRP channels has been conclusively identified as a molecular thermoreceptor in primary thermal afferents that is responsible for triggering thermoregulatory responses. Potential cold receptor TRP channels are TRPM8 and TRPA1, both of which are expressed in primary somatosensory neurons (4-6). TRPM8, which is activated by modest cooling ($< 27^{\circ}\text{C}$) (4, 5), mediates a dominant part of cold sensation since TRPM8-deficient nerve fibers show profound loss of cold sensitivity and TRPM8-deficient mice exhibit a reduced ability to avoid innocuous cold temperatures (7-9). TRPM8 can also be activated by menthol or icillin (4, 5) and application of menthol to the skin evokes warm-seeking behavior as well as cold-defensive, physiological responses including BAT and shivering thermogenesis and cutaneous vasoconstriction (10). Although the basal body core temperature of TRPM8-deficient mice in a thermoneutral environment is not different from that of wild-type mice (7), the ability of TRPM8-deficient mice to maintain their body temperatures in cold environments has not yet been tested. TRPA1 is activated by colder temperatures ($< 17^{\circ}\text{C}$) than TRPM8 (6). However, the contribution of TRPA1 to cold sensation *in vivo* is still controversial. Kwan *et al* (11) showed that TRPA1-deficient mice displayed a reduced sensitivity to a cold temperature (0°C), while Bautista *et al* (12) found no such a deficit in the response to even lower temperatures (about -10°C) in TRPA1-deficient mice but did observe a delayed onset of shivering when these mice were exposed to cold temperatures.

TRPV3 and TRPV4 are warm-sensitive TRP channels that are activated by innocuous warm temperatures with thresholds of $33-39^{\circ}\text{C}$ and $25-34^{\circ}\text{C}$, respectively (13-17). TRPV3 is increasingly activated by repeated heating (14, 17) and intriguingly, shows different sensitivity to the direction of temperature change, resulting in an hysteresis across thermal activation-deactivation cycles (17) that is similar to the thermosensitive responses exhibited by primary warm afferent fibers (18-20). Expression of either TRPV3 or TRPV4 is prominent in keratinocytes in skin epidermis, but low in somatosensory ganglia (13, 14, 21). Release and diffusion of factors such as interleukin-1 alpha (21) from stimulated keratinocytes to adjacent sensory nerve endings have been proposed as a mechanism through which thermal information detected by these TRP channels in keratinocytes could be transmitted to sensory nerves. Compared to wild-type mice, mice lacking

either TRPV3 or TRPV4 show altered behaviors in discriminating innocuous warm temperatures (22, 23). However, TRPV4-deficient mice exhibit intact circadian changes in body temperature and can defend their core temperature in a cold (4°C) or hot (35°C) environment (22, 24). The effect of TRPV3 deficiency on thermoregulatory responses to environmental thermal challenges remains to be investigated.

3.1.2. Dorsal horn

Primary somatosensory fibers deliver thermal information detected by cutaneous thermoreceptors to the spinal (or trigeminal) dorsal horn (Figure 2), in which lamina I neurons receive most cutaneous thermal signals (25). The best-known thermosensory ascending pathway from lamina I neurons is the spinothalamic pathway, in which lamina I neurons directly synapse on neurons in the thalamus that project to the primary somatosensory cortex, leading to perception and discrimination of cutaneous temperature (25, 26). However, the spinothalamic pathway does not play a significant role in the thermal afferent pathway that triggers involuntary thermoregulatory responses to environmental cold challenges. This is demonstrated by the maintenance of sympathetic thermogenic responses to skin cooling following elimination of the skin cooling-evoked changes in primary somatosensory cortex EEG activity with lesions of the thalamic regions that receive thermal somatosensory signals from the spinal cord (27). Nonetheless, spinothalamic and trigeminothalamic lamina I neurons send collaterals to the lateral parabrachial nucleus (LPB) (28, 29), which mediates cutaneous thermosensory signals to the central thermoregulatory mechanism ((27); see the next section).

Craig and colleagues have described three main classes of spinothalamic and trigeminothalamic lamina I neurons that were categorized by their responses to cutaneous thermal and mechanical stimuli: nociceptive-specific cells responding to noxious mechanical and heat stimuli; polymodal nociceptive cells responding to noxious mechanical, heat and cold stimuli; and thermoreceptive-specific cells responding linearly to graded, innocuous cooling or warming stimuli and not being activated further in the noxious temperature range (30, 31). Considering that cutaneous thermal stimuli that trigger thermoregulatory responses are mostly in the innocuous range, thermoreceptive-specific lamina I neurons with ascending axons likely convey the dominant signals leading to body temperature control.

3.1.3. Lateral Parabrachial Nucleus

Functional neuronal tracing experiments revealed that many neurons densely clustered in the external lateral subnucleus of the LPB (LPBel) in the pons are both activated (Fos expression) following cold (4°C) exposure (32) and retrogradely labeled following tracer injections into the POA (Figure 4) (27), indicating that LPBel neurons directly transmit cutaneous cold signals to the POA (Figure 2). The greatest number of double-labeled LPBel neurons were found when the tracer injection was centered on the midline subregion of the POA, including the median

CNS pathways for thermoregulation

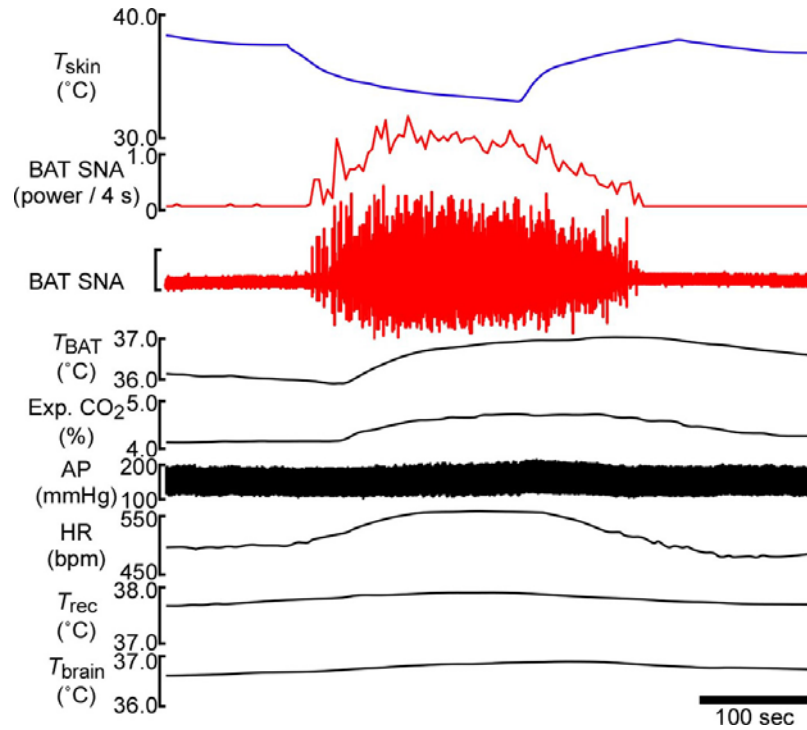


Figure 3. Changes in BAT sympathetic nerve activity (BAT SNA, red traces), BAT temperature (T_{BAT}), expired (Exp.) CO_2 , heart rate (HR), arterial pressure (AP), rectal temperature (T_{rec}) and brain temperature (T_{brain}) in response to cooling the rat trunk skin (T_{skin} , blue trace). The vertical scale bar for the BAT SNA trace represents 100 microvolts. Note that T_{rec} and T_{brain} do not change substantially during the skin cooling and rewarming, indicating that the observed changes in BAT SNA, T_{BAT} , Exp. CO_2 , HR and AP were evoked by changes in skin temperature rather than by changes in body core or in brain temperatures. Reproduced with permission from (1).

preoptic nucleus (MnPO) (27), suggesting that the cool sensory signals from LPBel neurons are transmitted mainly to the MnPO rather than the medial (MPO) or lateral (LPO) POA. The LPB receives numerous projections from the dorsal horn (33-35) and axonal swellings of dorsal horn neurons were found to closely associate with postsynaptic structures of POA-projecting LPB neurons (27), providing further support for the view that POA-projecting LPB neurons are activated by direct somatosensory inputs from dorsal horn lamina I neurons (Figure 2).

In strong support of these anatomical observations, electrophysiological recordings from single LPB cells *in vivo* revealed that the firing rate of most neurons in the LPBel that were antidromically identified as projecting to the MnPO, increased markedly in response to skin cooling and then returned to the basal level following skin rewarming – responses that paralleled the skin cooling-evoked changes in BAT sympathetic nerve activity (SNA) (Figure 5) (27). Most cold-sensitive LPBel neurons are not activated in response to noxious mechanical stimulus such as tail pinch (27), providing further support for the idea that LPB neurons involved in thermoregulatory afferent signaling receive thermal information predominantly from thermoreceptive-specific lamina I neurons rather than from other lamina I neurons mediating nociception.

In vivo physiological studies revealed that either

inhibition of local neurons or blockade of their glutamate receptors in the LPBel completely suppresses skin cooling-evoked cold-defense responses, including BAT and shivering thermogenesis and increases in metabolism and heart rate (Figure 6) (27). Thus, activation of LPBel neurons, likely by glutamatergic inputs from lamina I neurons driven by cutaneous cool signals, is essential for transmission of the cold thermal afferent stimulus to initiate cold defense responses (Figure 2). Consistently, rats that have bilateral lesions of the LPB fail to maintain body temperature in a cool environment ($17^{\circ}C$) (36). Glutamatergic stimulation of LPBel neurons with NMDA evokes increases in BAT thermogenesis, metabolism and heart rate that mimic skin cooling-evoked physiological responses (27). Such responses triggered by LPBel stimulation are blocked by antagonizing glutamate receptors in the MnPO (27), suggesting that cutaneous cool signaling to the POA is mediated by glutamatergic inputs from LPB neurons to the MnPO (Figure 2). The idea that the MnPO receives glutamatergic inputs for eliciting cold-defensive responses to environmental cooling is also supported by the finding that glutamatergic stimulation of MnPO neurons with NMDA evokes thermogenic, metabolic and tachycardic responses similar to those evoked during cold-defense (37).

Neurons in the dorsal subnucleus of the LPB (LPBd) (32), in particular those that directly project to the MnPO

CNS pathways for thermoregulation

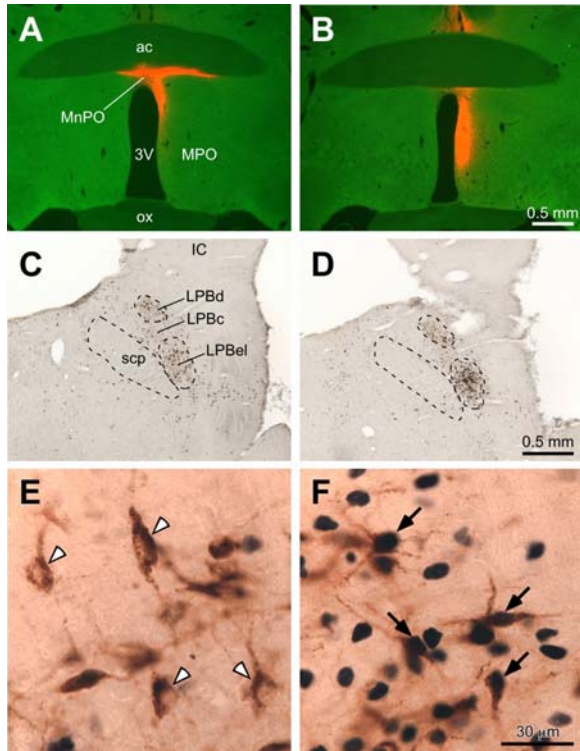


Figure 4. POA-projecting LPB neurons are activated in a cold environment. (A–F) Fos expression in LPB neurons retrogradely labeled with the retrograde tracer, cholera toxin b-subunit (CTb), injected into the POA in rats exposed to 24°C (A, C, E) and 4°C (B, D, F). A and B show injection sites of CTb (red). In C–F, CTb (brown) and Fos (blue-black) immunoreactivities in the LPB of the animals shown in A and B are visualized. In E and F, arrowheads indicate Fos-negative, CTb-labeled neurons and arrows indicate Fos-positive, CTb-labeled neurons. 3V, third ventricle; ac, anterior commissure; IC, inferior colliculus; LPBc, central part of the lateral parabrachial nucleus; MPO, medial preoptic area; ox, optic chiasm; scp, superior cerebellar peduncle. Reproduced with permission from (27).

are activated in response to skin warming and provide the pathway that mediates heat-defensive physiological responses to skin warming (Figure 2) (38). Thus, both cool and warm cutaneous thermosensory signals that are transmitted to the POA by separate populations of LPB neurons are essential for eliciting rapid thermoregulatory responses to defend body temperature from a variety of thermal challenges.

3.2. Visceral and spinal thermal receptor afferents

In addition to cutaneous thermoreception, thermoreceptive mechanisms exist in body core structures including the brain, spinal cord and abdomen. The POA contains abundant neurons that sense changes in local brain temperature and these are described below. The afferent fibers from cold and warm receptors in the abdominal viscera are included among the splanchnic and vagus nerve afferent fibers and their responses to temperature changes

are similar to those of cutaneous thermoreceptors (39, 40). However, little is known about the pathway through which abdominal thermal information is transmitted to the POA. Since a wide variety of visceral sensory information, related not only to temperature but also to gastric tension, satiety, taste, thirst and blood pressure, is transmitted to the LPB through the nucleus of the solitary tract (41, 42), it is possible that the LPB is a site at which thermal somatosensory signals are modified by those from the viscera to provide an integrated signal to the POA, a central site controlling a variety of homeostatic functions.

Temperature changes in the spinal cord can affect the activity of thermoregulatory neurons in the POA (43). Although this finding implies the existence of thermoreceptive mechanisms, such as thermosensation by spinal neurons, inherent to the spinal cord, TRP channels that are located in the central endings of primary somatosensory fibers in the spinal dorsal horn (7, 44) are also likely to sense spinal temperature and could underlie an integration of spinal thermal signals with cutaneous thermal signals at the spinal cord level. Since temperatures in deep body core structures including the brain are far less susceptible to changes in environmental temperature than are skin temperatures (2, 3, 45, 46), it seems likely that thermal information derived from these core body structures would enhance thermoregulatory responses principally evoked by cutaneous thermosensory signals only *in situations* of extreme thermal environments when the feedforward thermoregulatory responses driven by changes in skin temperature have proven inadequate to prevent a change in brain or body core (i.e., visceral organ) temperatures. Nonetheless, it remains of interest to understand how thermosensory signals from the skin and from the body core are integrated.

3.3. Temperature sensation within the Preoptic Area (POA)

Although neurons whose spontaneous discharge frequency is altered by changing the temperature of their local environment can be found in a variety of locations throughout the CNS, those in the POA and anterior hypothalamus have been most intensely studied because thermoregulatory responses, perhaps with the exception of certain thermoregulatory behaviors (47), are dependent on the integrity of POA neurons. Nakayama and colleagues made the first single-cell recording from thermosensitive neurons in the POA *in vivo* and found neurons with spontaneous discharge at thermoneutral temperatures that increased their discharge during local hypothalamic warming (warm-sensitive neurons) (48, 49). The POA contains warm-sensitive neurons whose tonic discharge is reduced by skin cooling and whose thermosensitivity to preoptic temperature is increased when the skin is cooled (50). Neurons sensitive to changes in bath temperature were found in subsequent recordings in the POA in hypothalamic slices and the majority of thermosensitive neurons were warm-sensitive neurons (51). In combination with these properties of warm-sensitive POA neurons, the findings that either skin cooling or direct cooling of the local environment of POA neurons evokes sympathetic thermogenesis in BAT as well as shivering thermogenesis

CNS pathways for thermoregulation

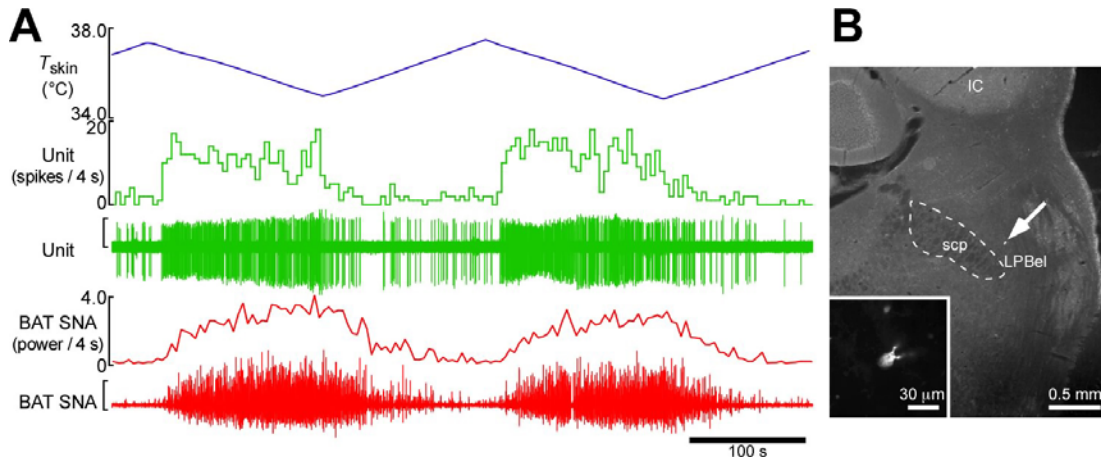


Figure 5. Skin cooling-evoked response of a single LPB neuron antidromically activated from the POA. A, *in vivo* extracellular unit recording of the action potentials of an LPB neuron (unit, green traces) and changes in BAT SNA (red traces) in response to trunk skin cooling (T_{skin} , blue trace). The vertical scale bars for the unit and BAT SNA traces represent 300 microvolts and 100 microvolts, respectively. The unit firing rate increased in response to skin cooling and returned to the baseline level in response to rewarming the skin. The changes in firing rate of this neuron paralleled the changes in BAT SNA. A collision test confirmed that this neuron projected to the POA. B, juxtacellular labeling located this neuron in the LPBel (arrow and magnified in inset). Reproduced with permission from (27).

(52, 53), and that transections immediately caudal to the POA elicit large increases in BAT temperature (54) are consistent with a model (Figure 2) in which warm-sensitive POA neurons integrate cutaneous and local thermal information and function as inhibitory projection neurons in the MPO that are tonically active at thermoneutral temperatures to suppress both shivering and non-shivering thermogenesis. Whether warm-sensitive neurons project axons outside of the POA remains unknown.

The neurophysiological mechanism underlying the thermosensitivity of warm-sensitive neurons in the POA continues to be investigated. The suggestion that a heat-induced membrane depolarization allows warm-sensitive neurons to reach their discharge threshold potential and then determines their discharge frequency (55) contrasts with the concept that a warming-dependent facilitation of the rate of rise of a depolarizing (pacemaker) prepotential in warm-sensitive neurons shortens the intervals between action potentials and thereby increases their firing rates (56). In the latter case, a transient, outward hyperpolarizing K^+ current (A-type potassium current) helps maintain a hyperpolarized membrane for a brief time after an action potential and the heat-induced increase in the inactivation rate of the A-type potassium current allows the prepotential to depolarize at a faster rate (56). Although TRPV4 channels have not been found in POA neuronal cell bodies, other ion channels that could contribute to the thermosensitivity of warm-sensitive neurons, such as hyperpolarization-activated cyclic nucleotide-gated channels and background potassium leak channels are localized in the cell bodies of many POA neurons, but are also distributed ubiquitously in the brain (13, 57). Identification of the molecule(s) responsible for the thermosensitivity of POA neurons await further investigation and the identification of specific anatomical markers for thermosensitive neurons would be a major

discovery in this field.

3.4. Sensorimotor Integration of Thermoregulation in the POA

3.4.1. Role of POA neurons in the cold-defense responses to cutaneous thermal afferents

As described above, the POA contains neurons that receive skin cooling-driven, glutamatergic inputs from cool-responsive neurons in LPBel. That the POA subregion receiving thermosensory cold signals is predominantly in the MnPO is suggested by the findings that the projections from LPB neurons activated by skin cooling terminate mainly in a median part of the POA (27) and that glutamatergic stimulation of the MnPO with nano-injections of NMDA evokes physiological responses mimicking cold-defensive responses, while the same stimulation of the MPO or LPO does not (Figure 7A–C) (37). Furthermore, inhibition of MnPO neurons completely blocks the activation of BAT thermogenesis and the increases in metabolism and heart rate evoked by skin cooling (Figure 7D) (37), indicating that activation of MnPO neurons is an essential process in the central mechanism for eliciting cold-defensive responses to environmental cold challenges.

In thermal environments when cold-defensive responses are not needed (i.e., when the discharge of cutaneous cool receptors and cool-responsive LPBel neurons is low), inhibitory MPO projection neurons (potentially warm-sensitive neurons) are postulated to discharge at a sufficient rate to tonically inhibit their target neurons in caudal brain regions, such as the dorsomedial hypothalamus/dorsal hypothalamic area (DMH) and the rostral ventromedial medulla, including the rostral raphe pallidus nucleus (rRPa), both of which lead to stimulation of cold-defensive responses when activated (see below).

That such a tonic inhibitory mechanism originating

CNS pathways for thermoregulation

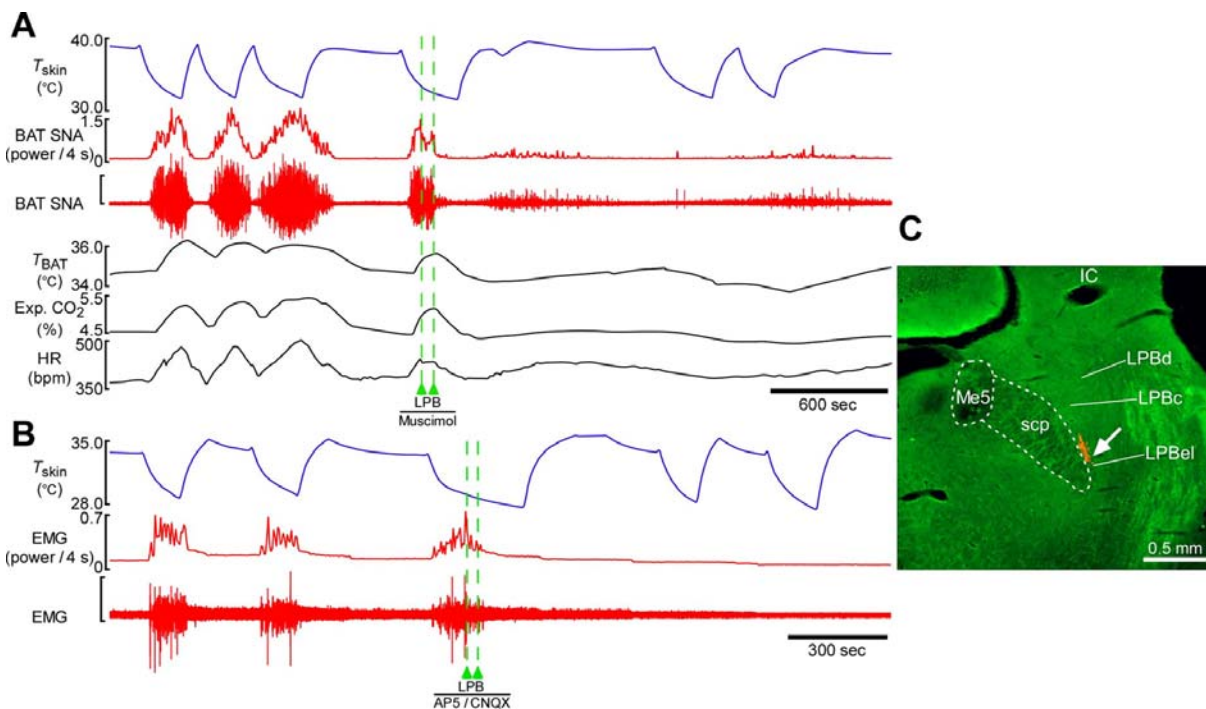


Figure 6. Inhibition of neuronal activity or blockade of ionotropic glutamate receptors in the LPBel reverses shivering and non-shivering thermogenesis and metabolic and cardiac responses that are evoked by skin cooling. A, skin cooling-evoked changes in BAT SNA, T_{BAT} , Exp. CO_2 and HR before and after bilateral nano-injections (green dashed lines) of the GABA_A receptor agonist, muscimol, into the LPBel. The vertical scale bar for the BAT SNA trace represents 100 microvolts. B, skin cooling-evoked changes in nuchal EMG before and after bilateral nano-injections (green dashed lines) of a mixture of the glutamate receptor antagonists, AP5 and CNQX, into the LPBel. The vertical scale bar for the EMG trace represents 400 microvolts. C, representative view of a nano-injection site in the LPBel as identified with a cluster of fluorescent beads (arrow). Reproduced with permission from (27).

predominantly in the MPO subregion of the POA is a fundamental aspect of the control of thermoregulatory effectors for cold defense is based on the findings (a) that a coronal transection just caudal to the POA evokes BAT thermogenesis (54), (b) that lesion of the MPO, but not that of the ventral LPO, evokes hyperthermia by increasing metabolism and by stimulating shivering thermogenesis and heat conservation through cutaneous vasoconstriction (58) and (c) that inhibition of neurons in the MPO, but not those in the MnPO or LPO, increases body core temperature, EMG activity (shivering), metabolism and heart rate (59, 60).

Furthermore, BAT and shivering thermogenesis as well as increases in metabolism and heart rate that are evoked by skin cooling are blocked by antagonizing GABA_A receptors in the MPO (1, 59). Thus, skin cooling-evoked responses are postulated to require a local circuit in the POA in which cutaneous cool signals that are received by MnPO neurons provide a GABA input to the inhibitory projection neurons in the MPO to reduce their tonic activity, resulting in disinhibition of neurons in caudal brain regions whose excitation leads to stimulation of thermoregulatory effectors for cold defense (Figure 2). Consistent with this hypothesis, increases in BAT thermogenesis, metabolism and heart rate that are evoked by stimulation of MnPO neurons are all reversed

completely by antagonizing GABA_A receptors in the MPO (37). The existence of GABAergic interneurons in the MnPO that innervate the MPO projection neurons, although not yet directly demonstrated, is supported by the anatomical observations (a) that some MnPO neurons innervate the MPO (61), (b) that the MnPO contains many GABAergic neurons (62, 63) and (c) that many neurons in the MnPO, rather than the MPO or LPO, are activated (express Fos protein) in response to reduced environmental temperature (32).

In addition to cool signals from the skin, direct cooling of the POA using a thermode can elicit BAT and shivering thermogenesis (52, 53). The findings that warm-sensitive neurons are the predominant thermosensitive neuron in the POA (51) and that the spontaneous activity of warm-sensitive POA neurons decreases during local cooling support the hypothesis that the thermogenic responses to direct cooling of the POA are mediated by an attenuation of the tonic activity of warm-sensitive MPO projection neurons, which, in turn, leads to a disinhibition of the caudal brain sites such as the DMH or the rRPa whose increased activity then facilitates thermogenesis (Figure 2). This mechanism would be consistent with the hypothesis that the firing rates of warm-sensitive projection neurons in the MPO, potentially a major contribution to the neurophysiological substrate underlying the

CNS pathways for thermoregulation

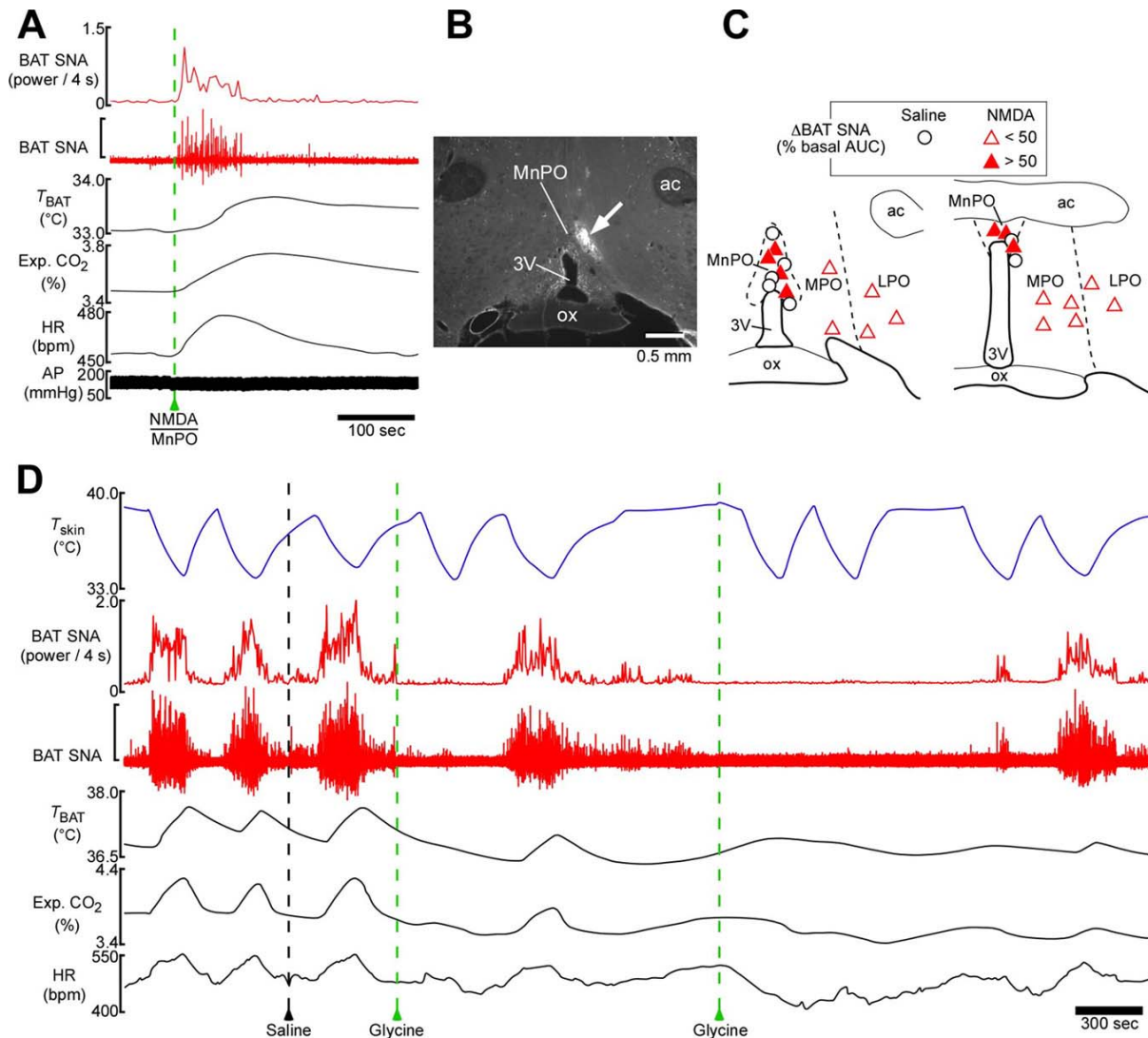


Figure 7. Glutamatergic stimulation of MnPO neurons, but not MPO or LPO neurons, evokes thermogenic, metabolic and cardiac responses and inhibition of MnPO neurons blocks thermogenic, metabolic and cardiac responses to skin cooling. **A**, changes in physiological variables evoked by a nanoinjection (green dashed line) of NMDA into the MnPO. The vertical scale bars for the BAT SNA trace represent 50 microvolts. **B**, representative injection site in the MnPO, identified by a cluster of fluorescent beads (arrow). **C**, composite drawing of saline or NMDA injections sites in the subregions of the POA, with their stimulatory effects on BAT SNA. No saline injections increased BAT SNA by more than 50 percent of the basal area under the curve (AUC) of the power trace during the 3 minute period after the injection. **D**, changes in BAT SNA, T_{BAT} , Exp. CO_2 and HR evoked by repeated skin cooling (T_{skin} , blue trace). Saline or glycine, an inhibitory neurotransmitter, was nanoinjected into the MnPO at the broken lines. The vertical scale bar for the BAT SNA trace represents 400 microvolts. Reproduced with permission from (37).

thermoregulatory “balance point” (64), is determined by both thermosensory afferent signals from the skin and the effect of local brain temperature.

3.4.2. Febrile response to the pyrogenic mediator, prostaglandin (PG) E_2

The POA is known as a ‘fever center’ as well as a thermoregulatory center. Fever is a defended elevation in body temperature that plays a significant role in the acute phase reaction stimulated by endogenous pyrogens released during infection. Fever is thought to provide an optimal

hyperthermic environment for mounting host defenses against invading bacteria and viruses while reducing pathogen viability. PGE_2 , which is synthesized in the brain vasculature and in peripheral tissues in response to immune signals (65-67), acts as a powerful endogenous pyrogenic mediator in the POA. Injection of PGE_1 into various subcortical brain regions indicated that the POA is the sole region that can sense the E-series of PGs to produce fever (68, 69) and this localization was refined when nanoinjections (1 ng/10 nl) of PGE_2 within the POA revealed the responsive sites to be in the MPO and MnPO (70).

CNS pathways for thermoregulation

In these POA subregions, the EP3 subtype of PGE receptor is localized on many neuronal somata and dendrites (Figure 8A) (71, 72). Although mRNA expression for the EP1 and EP4 subtypes is also detected in the POA (73), analyses of mice lacking each of the known PGE receptor subtypes showed that only EP3 receptor-deficient mice completely failed to show a febrile response to PGE₂, interleukin-1 beta, or endotoxin (Figure 8B) (74) and EP1 receptor-deficient mice showed a partial attenuation of endotoxin-induced fever (75). Furthermore, genetic deletion of the EP3 receptor specifically in neurons distributed in the MnPO and MPO suppressed most of the febrile response to PGE₂ or endotoxin (76). These lines of evidence indicate that the EP3 receptors in somatodendritic portions of POA neurons are the principal target site of PGE₂ for its pyrogenic action and that activation of these receptors by PGE₂ triggers neuronal processes leading to fever induction.

The neuronal population expressing EP3 receptors in the POA contains subpopulations that provide direct projections either to the DMH or to the rRPa (Figure 8C, D) (63, 77), but very few EP3 receptor-expressing POA neurons send collaterals to both sites (78). Furthermore, EP3 receptor-expressing POA neurons multisynaptically innervate BAT as evidenced by pseudorabies viral tracing (79). The majority of EP3-expressing POA neurons are GABAergic (63) and antagonizing GABA_A receptors in the DMH or rRPa evokes fever-like responses including BAT thermogenesis and tachycardia (80-83). Coronal transection just caudal to the POA evokes BAT thermogenesis (54) and inhibition of POA neurons with a muscimol nanoinjection elicits hyperthermic, cardiovascular and neuroendocrine responses similar to those evoked by a PGE₂ nanoinjection into the same site (60). Binding of PGE₂ to EP3 receptors can inhibit neuronal activity by coupling to inhibitory GTP-binding proteins (84) and the tonic activity of most warm-sensitive neurons in the POA is inhibited by the E-series of PGs (85, 86). In addition, intracerebroventricular (icv) PGE₂ application reduces cAMP level in the POA and icv administration of an inhibitor of phosphodiesterase, a degradation enzyme for cAMP, blunts fever evoked by intra-POA PGE₂ application (87). Further, blockade of alpha-adrenergic receptors in the POA does not affect the increase in local PGE₂ in response to systemic lipopolysaccharide (LPS), but eliminates the early phase of LPS-induced fever (88). Together, these data suggest a model (Figure 2) in which EP3 receptor-expressing POA neurons, potentially the population of warm-sensitive POA neurons described above, normally maintain a tonic GABAergic inhibition of thermogenic neurons in the DMH or the rRPa and, during infection, PGE₂, produced locally and/or systemically, binds to their EP3 receptors and attenuates their tonic firing activity through reducing the intracellular cAMP level, which, in turn, leads to disinhibition of thermogenic neurons in caudal brain regions and activation of thermoregulatory effectors to increase heat production and reduce heat loss (77, 89).

The observation that separate populations of EP3 receptor-expressing POA neurons project to the DMH or to

the rRPa (78) indicates that neurons in these two caudal brain sites that are involved in febrile responses are separately controlled by these populations of POA neurons. As illustrated schematically in Figure 2, the rRPa contains sympathetic premotor neurons that multi-synaptically innervate BAT and cutaneous blood vessels (89-91) and the rRPa mediates both BAT thermogenesis and sympathetic constriction of skin blood vessels that are evoked by either PGE₂ application into the POA or by cold challenges (1, 63, 92, 93). The DMH mediates BAT thermogenic response to injection of PGE₂ into the POA or to skin cooling (1, 77, 94), but, in contrast, does not mediate cutaneous vasoconstriction stimulated by intra-POA PGE₂ or by cooling (93). These findings are synthesized in a circuit model (Figure 2) that includes a tonic inhibition from the separate populations of EP3 receptor-expressing POA neurons that project to the DMH and to the rRPa to control BAT thermogenesis and cutaneous vasoconstriction, respectively, as well as BAT sympathoexcitatory signals that are transmitted to BAT sympathetic premotor neurons in the rRPa from those DMH neurons that are disinhibited following pyrogenic or cold cutaneous stimuli.

4. PATHWAYS TO THERMOREGULATORY EFFECTORS

4.1. Thermoregulatory behavior

Thermoregulatory behaviors in animals are stereotypical somatic motor acts directed primarily toward minimizing or optimizing heat transfer from the body to the environment. In rodents, such behaviors include postural changes (huddling in the cold or spreading the limbs in the heat), movement to a “preferred” environment (cold seeking in a hot environment) or spreading of saliva in a hot environment. Thermoregulatory behaviors can also generate heat in the cold, such as increased, non-shivering movement. Thermoregulatory behaviors are included in the category of “motivated” behaviors, expected to have important relationships to the limbic emotional and the dopaminergic reward systems in the brain. The emotional distress of being too hot or too cold is commonly a significant factor in motivating human behavior to seek or produce an ambient temperature that is more “comfortable” and the establishment of a homeostatic ambient temperature (i.e., within the thermoneutral zone) is accompanied by the reward (satisfaction) of being in a pleasant thermal environment.

Since the skin receives the first indication of a potential threat to brain and core temperature homeostasis, it is not surprising that thermoregulatory behavior in animals is triggered primarily by cutaneous thermal receptors. Although skin thermal receptors can also initiate human thermoregulatory behavior, by adulthood, humans have established such a rich repertoire of experience, learned responses and options for altering their environment that a variety of non-thermal cues (hearing a weather report or seeing a weather condition or the “predicted” effect of not programming the thermostat) play a significant role in initiating thermoregulatory behaviors. It is also not surprising that the complexity of the neural

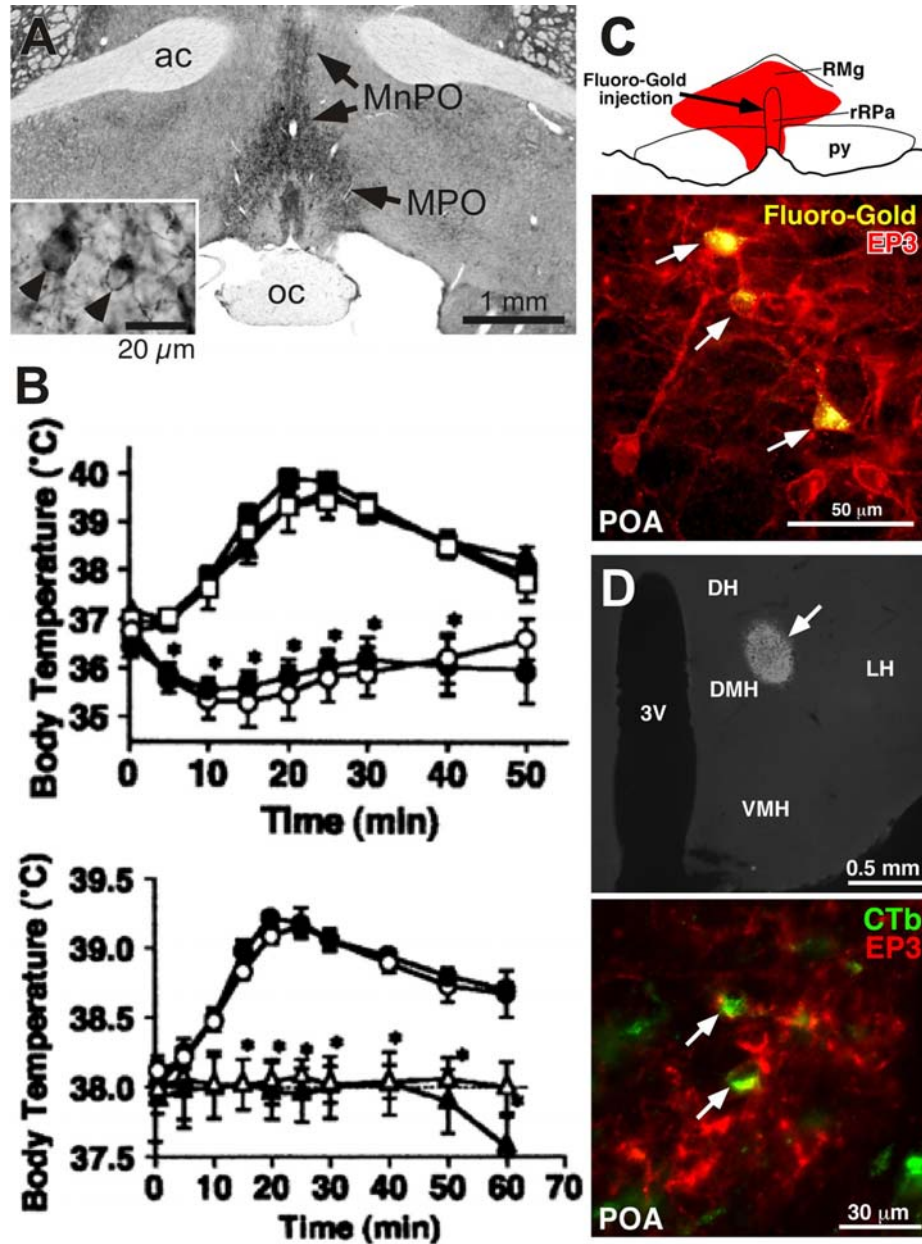


Figure 8. Pyrogenic role of prostaglandin EP3 receptors in the preoptic area. A, within the rat POA, prostaglandin EP3 receptor immunoreactivity is distributed in the somatodendritic part of MnPO and MPO neurons (inset, arrowheads) (modified from (71), with permission). B, loss of PGE₂-induced (top) or lipopolysaccharide (LPS)-induced (bottom) febrile response selectively in *EP3*^{-/-} mice. Top graph shows changes in body temperatures of *EPI*^{-/-} (filled squares), *EP2*^{-/-} (open squares), *EP3*^{-/-} (filled circles) and *EP4*^{-/-} (filled triangles) mice following icv PGE₂ injection. Vehicle was injected icv into *EP3*^{-/-} mice (open circles). Asterisk indicates *P* less than 0.01 for *EP3*^{-/-} mice versus wild-type mice injected with PGE₂. Bottom graph shows changes in body temperatures of wild-type (open circles), *EPI*^{-/-} (filled circles) and *EP3*^{-/-} (filled triangles) mice following iv LPS injection. Vehicle was injected iv into wild-type mice (open triangles). Asterisk indicates *P* less than 0.01 for *EP3*^{-/-} mice versus wild-type mice injected with LPS. Reproduced with permission from (74). C, EP3 receptor-expressing POA neurons directly project to the rRPa. Top panel shows a site of injection of Fluoro-Gold, a retrograde neural tracer, that was centered at the caudal one-third of the rRPa (arrow) and spread into the surrounding raphe magnus nucleus (RMg) (red area); bottom, fluorescence photomicrograph shows POA neuronal cell bodies (arrows) double-labeled with Fluoro-Gold fluorescence (yellow) and EP3 receptor immunoreactivity (red). Reproduced with permission from (63). D, EP3 receptor-expressing POA neurons directly project to the DMH. Top, a CTb injection site (arrow) in the DMH; bottom, fluorescence photomicrograph of POA neuronal cell bodies (arrows) double-labeled with EP3 receptor (red) and CTb (green) immunoreactivities. DH, dorsal hypothalamic area; LH, lateral hypothalamic area; VMH, ventromedial hypothalamic nucleus. Reproduced with permission from (77).

circuitry required for initiating, organizing, performing and controlling even simple thermoregulatory motor acts and the absence of a disorder of thermoregulatory behavior (although disrupted or absent thermoregulatory behaviors would be expected in a variety of movement disorders) seem to have combined to result in a minimal understanding of the organization of the neural pathways underlying thermoregulatory behavior (95, 96). Lesion studies suggest that, with the exception of limb extension in a hot environment (97), a wide range of thermoregulatory behaviors can occur in the absence of the neurons in the autonomic/shivering thermoregulatory sensorimotor integration area of the POA (47, 98-100). It would be of interest to distinguish whether the cutaneous sensory information required for initiation of thermoregulatory behavior is that conveyed along the spinothalamic thermal sensory pathway or that along the spinoparabrachial autonomic/shivering thermal afferent pathway (27).

4.2. Cutaneous vasoconstriction

Cutaneous blood flow brings metabolic heat to the body surface where it is available for transfer to the environment, particularly from regions of relatively hairless skin, such as the tail of the rat or mouse or the ear of the rabbit or elephant. Blood flow can be routed centrally, i.e., the low cutaneous blood flow during cold exposure, or peripherally, i.e., the high cutaneous blood flow during heat exposure, to control the level of heat loss to the environment as a contributing factor to the maintenance of body temperature and to the defense of an elevated body temperature during fever. In humans, increased CVC sympathetic outflow mediates the reduction in cutaneous blood flow in a cold environment, while a sympathetic vasodilator outflow is principally responsible for the increase in cutaneous blood flow in hyperthermic environments (101). Extensive studies on the mechanisms and neurochemical mediators of the human cutaneous vasodilation support an acetylcholine-mediated relaxation of vascular smooth muscle (102) that is dependent on local prostanoids, but not nitric oxide (103), while others support a role for norepinephrine acting via nitric oxide and for neuropeptide Y (104, 105). Some of these differences may arise from differences in the mechanisms mediating the cutaneous vasomotor response to local heating and that to whole-body warming. In contrast, rats do not appear to have a cholinergic sympathetic vasodilator system (106) and thus the thermoregulatory control of blood flow to the rat tail is primarily dependent on the level of CVC sympathetic outflow (107). In both humans and rodents, heating-evoked cutaneous vasodilation is accompanied by a marked increase in visceral (i.e., splanchnic and renal) vasoconstriction (108-110) which is independent of angiotensin (108). Whether this visceral vasoconstriction is a component of the POA-mediated thermoregulatory response to cutaneous and/or central warming or whether it is reflex-driven in response to the increase in blood flow to the skin is not known. In primates and in older rats, heating also induces a marked tachycardia (111, 112), mediated principally by vagal withdrawal. The elevated heart rate, which would contribute to the maintenance of arterial pressure in the face of a significant cutaneous vasodilation,

may be a reflex response to a fall in central venous pressure.

Direct recordings of CVC postganglionic sympathetic nerve activity in several species, including humans, cats, rabbits and rats, indicate a moderate level of CVC sympathetic activity at normothermic body temperatures and this activity has a respiratory and a cardiac modulation, although the baroreceptor reflex influence on CVC discharge is generally described as weak. Sympathetic preganglionic neurons controlling the rat tail CVC outflow are located in T11-L2 spinal segments (89, 91, 113). Retrograde tracing studies employing PRV also indicate that premotor inputs to CVC spinal sympathetic networks arise from neurons in the ventromedial medulla, including the rRPa and the parapyramidal (PPy) region, some of which contain 5-HT and others that express the vesicular glutamate transporter 3 (VGLUT3) (89, 91, 114) and from the rostral ventrolateral medulla (RVLM), some of which are C1 neurons, as well as from the A5 noradrenergic cell group, lateral hypothalamic area and paraventricular hypothalamic area (91).

Functionally, activation of neurons in the rostral medullary raphe (or the RVLM) overcomes the inhibition of rat tail CVC elicited by warming the POA (115) (Figure 9D) and eliminates blood flow in the rabbit ear pinna (116) (Figure 9E). Inhibition of independent outputs from either the rRPa or the RVLM could prevent the cooling-evoked increases in rat tail CVC (117) (Figure 9B). Similarly, rostral raphe and PPy neuronal activity is important for the cold-evoked decrease in rabbit ear blood flow (118, 119) (Figure 9A, 9C) and the influence of these raphe-spinal pathways on CVC preganglionic neuronal discharge is dependent on an interaction of spinal serotonergic and glutamatergic inputs (120). In summary, these data indicate that thermoregulatory alterations in cutaneous blood flow mediated by CVC sympathetic outflow are determined by the activity of populations of CVC sympathetic premotor neurons located primarily in the rostral raphe, PPy and RVLM (Figure 2) and involve release of at least glutamate and 5-HT within the CVC spinal sympathetic network.

Neurons within several brain regions influence cutaneous heat loss through their effects on the activity of CVC sympathetic premotor neurons. The following findings are consistent with the thermoregulatory control of CVC, similar to that of other thermal effectors, being mediated primarily by warm-sensitive neurons in the POA and with PGE₂-mediated inhibition of such warm-sensitive POA neurons contributing to the activation of CVC sympathetic premotor neurons during fever. L- glutamate injections into the POA, electrical stimulation of the POA and preoptic warming each elicit vasodilation in the rat paw and the rat tail (121) (Figure 10B). Injection of PGE₂ or GABA into the POA increases CVC outflow (93, 122, 123) (Figure 10C). Transection of the neuraxis immediately caudal to the POA increases CVC outflow (93) (Figure 10A). However, since subsequent transections caudal to the DMH, but rostral to the rRPa, did not significantly reduce CVC outflow and injection of muscimol into DMH did not

CNS pathways for thermoregulation

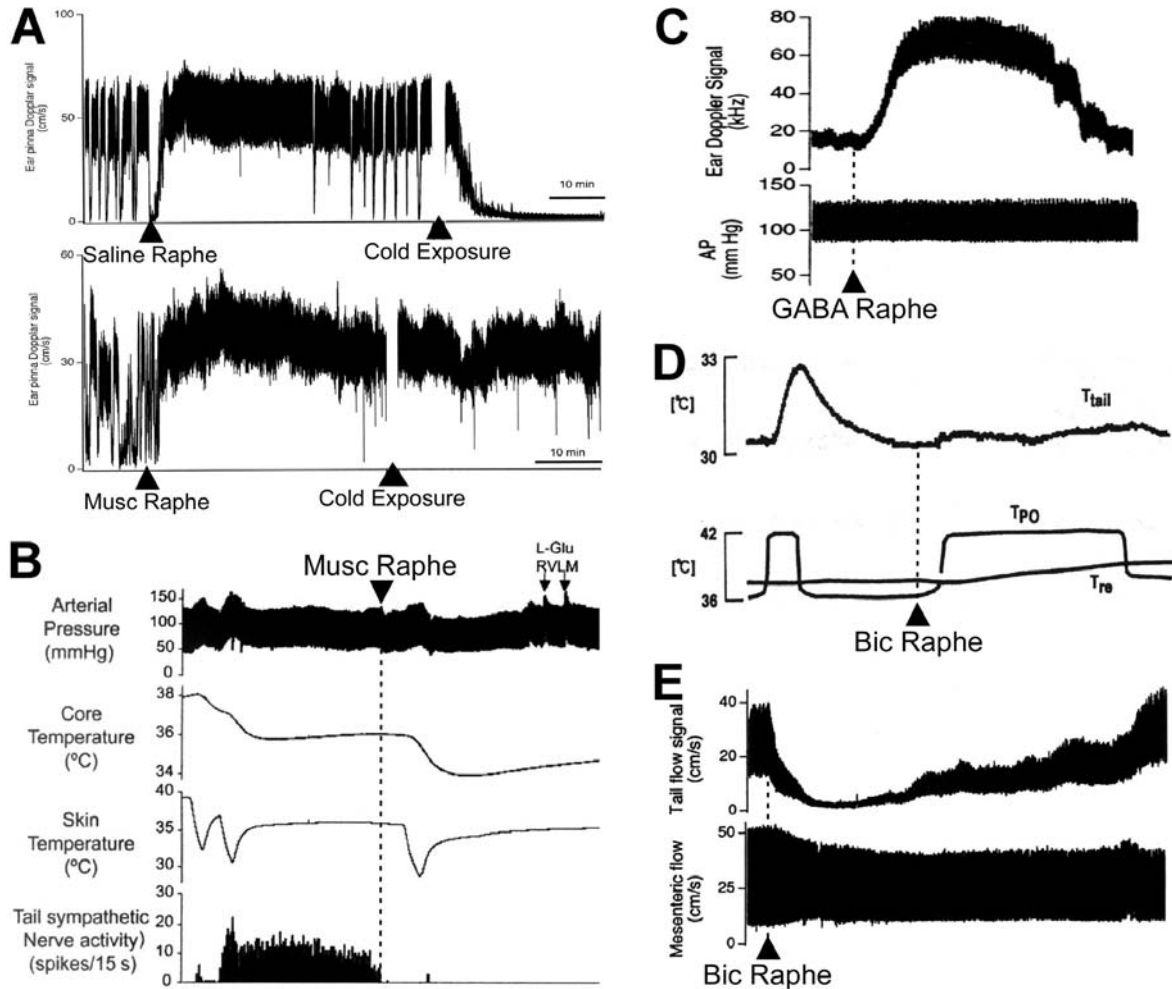


Figure 9. Rostral medullary raphe neurons play a major excitatory role in determining cutaneous vasoconstrictor (CVC) sympathetic outflow and cutaneous blood flow. Inhibition of raphe pallidus neurons with microinjection of muscimol (Musc) or GABA prevents the cold-evoked decrease in rabbit ear pinna blood flow (A, reproduced with permission from (119)) and the cold-evoked increase in rat tail CVC activity (B, reproduced with permission from (117)) and increases rabbit ear pinna blood flow from spontaneous levels at room temperature (C, modified from (118), with permission). Increases in raphe pallidus neuronal activity following microinjection of bicuculline (Bic) prevents the increase in rat tail temperature evoked by hypothalamic warming (D, reproduced with permission from (115)) and decreases rat tail blood flow from spontaneous levels at room temperature (E, Reproduced with permission from (116)).

affect either spontaneous, thermally-sensitive or PGE₂-into-POA-evoked CVC neuronal discharge (93) (Figure 10C), indicating that activation of DMH neurons is not required for thermoregulatory or febrile activation of CVC sympathetic outflow. In combination with these physiological results, the demonstration that POA contains GABAergic neurons that express EP3 receptors for PGE₂ and project to the rRPa (63) and that these are distinct from those EP3-expressing POA neurons that project to the DMH (78) supports a model (Figure 2) in which warm-sensitive POA neurons provide a direct GABAergic input to the rRPa to regulate the discharge of CVC sympathetic premotor neurons. As a corollary, the principal source of the excitatory drive to CVC sympathetic premotor neurons in the rRPa would appear to arise from neurons caudal to the DMH, likely in the brainstem (93).

Nonetheless, these data derived from transection experiments could also be consistent with a PGE₂-evoked and cooling-driven increase in CVC neuronal discharge arising from inhibition of POA neurons that excite neurons, located between the POA and the rRPa, which are inhibitory to CVC sympathetic premotor neurons in the rRPa. Several observations suggest that a population of such neurons may exist in the rostral periaqueductal gray (PAG). Neurons in the rostral PAG receive input from neurons in the POA that are activated (increased Fos expression) by environmental warming, but not cooling (124), environmental warming also increases Fos expression in the rostral PAG (125), and chemical excitation of neurons within the rostral PAG increases both tail temperature and blood flow (126), presumably due to inhibition of CVC sympathetic outflow. The roles of direct

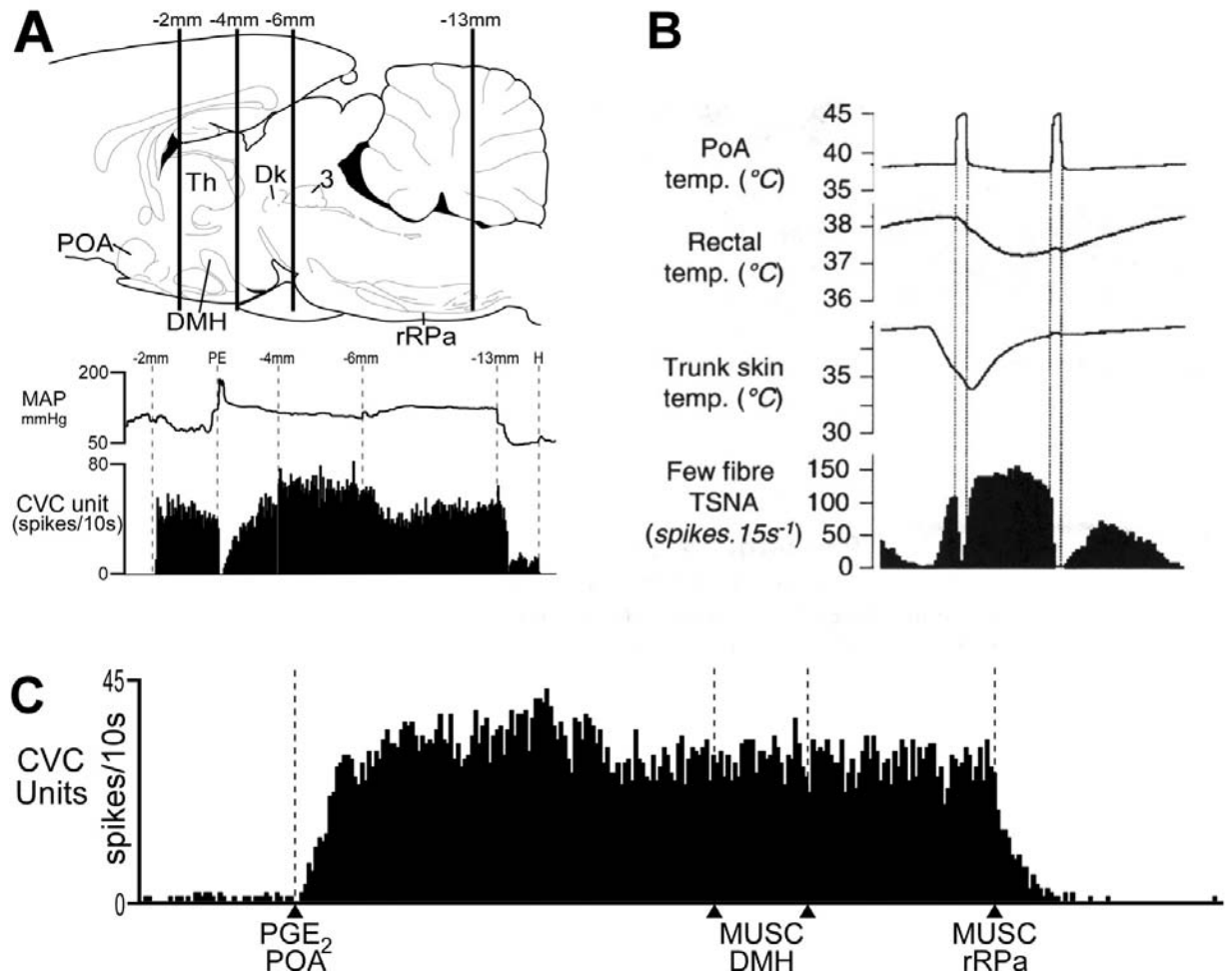


Figure 10. Warm-sensitive preoptic area (POA) projection neurons provide an inhibitory influence on cutaneous vasoconstrictor (CVC) outflow and neurons in dorsomedial hypothalamus (DMH) are not required for PGE₂-evoked CVC activation. A, transection of the neuraxis caudal to the POA produces an increase in rat tail CVC activity. Reproduced with permission from (93). B, POA warming inhibits rat tail sympathetic nerve activity (TSNA) controlling tail CVC. Reproduced with permission from (205). C, inhibition of neurons in the DMH with microinjections of muscimol (Musc) does not affect the activation of rat tail CVC neurons evoked by PGE₂ into the POA, but inhibition of putative CVC sympathetic premotor neurons in the raphe pallidus (rRPa) reverses the febrile-like activation of CVC activity. Reproduced with permission from (93).

and/or indirect pathways between CVC-regulating, warm-sensitive POA neurons and CVC sympathetic premotor neurons in the ventromedial and ventrolateral medulla remain to be elucidated.

4.3. Thermogenesis in brown adipose tissue (BAT)

In response to a cold environment, to a fall in core body temperature or to the presence of pyrogenic cytokines, CNS thermoregulatory networks can stimulate thermogenesis primarily in three tissues: brown adipose tissue (BAT), heart and skeletal muscle (shivering). In contrast to the ancillary nature of thermogenic shivering in skeletal muscles that are normally used to produce movement and posture, non-shivering or adaptive thermogenesis in BAT is the specific metabolic function of this tissue and is accomplished by the heat generating capacity of a significant proton leak across the extensive mitochondrial membranes of the brown adipocytes

facilitated by the high expression of uncoupling protein-1 (UCP1) in BAT mitochondrial membranes (127). The level of BAT SNA and norepinephrine release and beta3-adrenergic receptor binding to brown adipocytes determine the level of thermogenesis in BAT by regulating both the activity of lipases providing the immediate fuel molecules for BAT mitochondria and the level of expression of BAT mitochondrial UCP1 (127). BAT is an important thermoregulatory effector in rodents and other small mammals (128), but also contributes to cold defense in both infant and adult humans (129-132).

4.3.1. The rostral ventromedial medulla contains BAT sympathetic premotor neurons

Within the hierarchical organization of the central network controlling BAT thermogenesis, medullary

CNS pathways for thermoregulation

neurons play a key role as sympathetic premotor neurons – providing the essential excitatory input to drive spinal motor neuron activity. Transynaptic retrograde transport studies involving viral tracer injections into the interscapular BAT pad indicated that BAT sympathetic premotor neurons are located in the rostral ventromedial medulla, centered in the rRPa and extending into nearby raphe magnus nucleus and over the pyramids to the PPy area (79, 90, 133, 134). Other brainstem regions with spinally-projecting neurons also became infected following virus injections into BAT and these, as well as the rRPa area, overlapped regions previously shown with conventional retrograde tracing to provide inputs to the intermediolateral (IML) cell column containing sympathetic preganglionic neurons (SPNs). A comparison of the localization of Fos induced by cold exposure, which activates BAT thermogenesis, with the locations of virally-labeled neurons following inoculations of BAT, provided function-based evidence that the rRPa and the ventromedial parvocellular subdivision of the paraventricular hypothalamic nucleus were the two potential premotor populations having a principal role in mediating the descending regulation of the spinal sympathetic circuit controlling BAT thermogenesis (90).

Anatomical studies have indicated that rostral ventromedial medullary neurons, including those in the rRPa and surrounding the pyramids, that project to the IML to influence the discharge of BAT SPNs contain one or more of the following markers: (a) the vesicular glutamate transporter 3 (VGLUT3), potentially indicative of glutamatergic neurons (89, 135); (b) serotonin (5-HT) or tryptophan hydroxylase, a synthetic enzyme for 5-HT (89, 90, 135) and (c) glutamic acid decarboxylase-67 (GAD-67), a marker for GABAergic neurons (135). That VGLUT3-expressing and serotonin-containing neurons in the rostral ventromedial medulla are functionally-related to the control of cold defense effectors is suggested by the findings that the majority of VGLUT3-containing neurons in the rRPa express Fos in response to cold exposure or icv PGE₂ (89) and that physiologically-identified, putative serotonergic neurons in the rRPa increase their firing rate in response to cold (136) (137) or PGE₂ administration (137).

Several lines of physiological evidence also support the existence of BAT sympathetic premotor neurons in the rRPa region of the rostral ventromedial medulla. Injections of agonists for either NMDA or non-NMDA glutamate receptors into the rRPa evoke intense activations of BAT SNA (Figure 11A) (92). Thus, there are neurons in the rRPa that express NMDA and non-NMDA subtypes of glutamate receptors and that are capable of increasing the sympathetic drive to BAT. Disinhibition of neurons in the restricted region of the rRPa by antagonizing local GABA_A receptors also increases BAT SNA and BAT thermogenesis (Figure 11B) (82, 138) and anatomical evidence indicates that VGLUT3-expressing neurons in the rRPa receive numerous GABA inputs (139). These data indicate that in an anesthetized rat with a normothermic body temperature, the rRPa neurons controlling BAT SNA receive a dominant, tonically-active, GABAergic inhibition and that relief of this inhibition allows a potent increase in

the rRPa neuronal discharge, indicating, in turn, the existence of an ongoing, or bicuculline-activated, excitatory input to these rRPa neurons or of a complement of membrane ion channels supporting intrinsic activity in these rRPa neurons. The physiological roles and the sources of the tonically-active GABAergic inhibitory input(s) and of the ongoing excitatory drive(s) to BAT sympathetic premotor neurons in the rRPa have yet to be identified. Relevant to the inhibitory control of BAT sympathetic premotor neurons in rRPa, however, is the demonstration that the POA contains GABAergic neurons that project to the rRPa (63) and that the inhibition of BAT SNA elicited by activation of neurons in the PVH is prevented by blockade of GABA_A receptors in the rRPa (140). In addition, ponto-medullary, but not hypothalamo-pontine transections of the neuraxis (141-143) or injection of procaine into the region of the retrorubral field (141, 144) elicits a large increase in BAT thermogenesis indicating the existence of pontine neurons that provide a potent, tonic inhibition of BAT SNA, likely through their effects on the discharge of BAT sympathetic premotor neurons in the rRPa.

Conversely, inhibition of the activity in neurons in the rRPa reverses the increases in BAT SNA and BAT thermogenesis and heart rate elicited by all thermogenic stimuli. The cold defense stimulus of skin cooling elicits responses (Figure 3) including increases in BAT SNA, BAT temperature (a measure of thermogenesis), expired CO₂ (reflecting a stimulation of oxidative metabolism such as in BAT and the heart) and heart rate. Inhibition of local neurons in the rRPa with nanoinjection of glycine or muscimol produces a rapid and complete reversal of the skin cooling-evoked increase in BAT SNA and an immediate waning of the accompanying metabolic and cardiac responses, despite the sustained reduction in skin temperature (1). Inhibition of rostral ventromedial medullary neurons produces dramatic falls in body temperature in the awake rat (145), consistent with the possibility that, in a sub-thermoneutral, room temperature environment, the activity of BAT sympathetic premotor neurons in the rRPa and BAT thermogenesis are actively contributing to the maintenance of core body temperature. The effects of inhibiting neurons in the rRPa lead to the conclusion that the activity of BAT sympathetic premotor neurons in the rRPa provides the supraspinal excitatory drive to spinal sympathetic circuits that is both necessary and sufficient for the thermogenic responses to thermoregulatory and febrile stimuli and to a variety of neurochemical mediators that increase body temperature. For example, other thermogenic stimuli, in addition to cold defense, whose stimulated BAT thermogenesis and tachycardia are reversed or prevented by inhibition of neural activity in the rRPa region of the rostral ventromedial medulla include the pyrogenic mediator PGE₂ (Figure 11C) (63, 92, 146, 147); disinhibition of neurons in the DMH (80) or in the lateral hypothalamus (148); activation of central mu-opioid receptors (149), central melanocortin receptors (150) or preoptic CRF receptors (151) and systemic administration of the adipose tissue hormone, leptin (152).

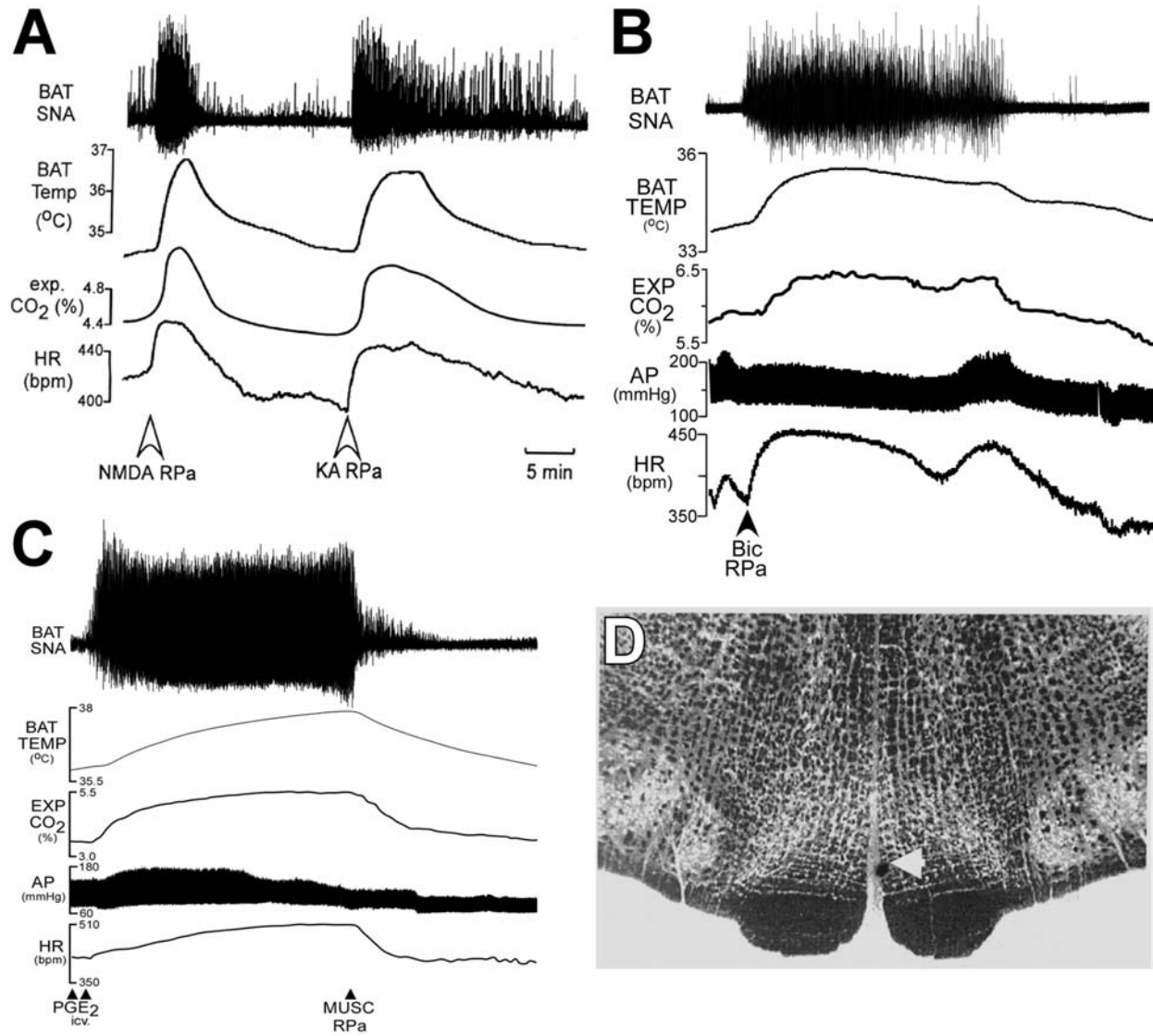


Figure 11. A, both NMDA and kainic acid (KA) are highly effective at increasing BAT SNA, BAT temperature, expired (exp.) CO₂ and heart rate (HR) when nano-injected into the raphe pallidus (RPa). Reproduced with permission from (92). B, disinhibition of local neurons in the RPa elicits large and sustained increases in BAT SNA, BAT temperature, expired CO₂ and HR. Reproduced with permission from (92). C, inhibition of the activity of neurons in the RPa with a local injection of muscimol (MUSC) reverses the increases in BAT SNA, BAT temperature, expired CO₂ and HR evoked by PGE₂ icv. Reproduced with permission from (146). D, histological coronal section through the rat brainstem approximately 12.3 mm caudal to bregma, illustrating a typical nano-injection site (arrowhead) in the RPa. Reproduced with permission from (146).

Blockade of glutamate receptors in the rRPa is also effective in reversing cold-evoked and pyrogen-mediated stimulations of BAT thermogenesis and of heart rate (1, 92), as well as those elicited by disinhibition of neurons in the DMH (153). These findings implicate glutamate receptor activation in the tonic excitation of BAT and cardiac sympathetic premotor neurons in the rRPa that is revealed by reducing their tonic inhibitory inputs and in their excitation from rostral inputs such as neurons in the DMH (Figure 2). Together with the anatomical evidence for direct projections from the rRPa region to IML neurons, including the SPNs, that control BAT thermogenesis, these

functional data indicate that the rRPa region contains the principal population of BAT sympathetic premotor neurons providing the final common bulbospinal pathway for the sympathoexcitatory drive to the spinal network controlling BAT SNA (Figure 2).

The brainstem also contains the pathways mediating the inhibition of BAT thermogenesis in response to arterial hypoxia, a reflex to restrict oxygen consumption in the face of reduced oxygen availability or compromised oxygen diffusion and transport in the blood. Systemic hypoxia or bolus systemic injections of sodium cyanide

CNS pathways for thermoregulation

produce a prompt and complete reversal of the BAT SNA activations evoked by hypothermia and by PGE₂ in the POA and this response to hypoxia is eliminated by section of the carotid sinus nerves or by inhibition of second-order arterial chemoreceptor sensory neurons in the commissural region of the nucleus of the tractus solitarius (NTS) (154). Interestingly, hypoxia also eliminates the BAT SNA activation resulting from bicuculline nanoinjection into the rRPa, suggesting that activation of a GABAergic input to BAT sympathetic premotor neurons in the rRPa is unlikely to mediate the hypoxic inhibition of BAT thermogenesis. Indirect evidence points to a possible role for a spinal inhibitory mechanism. Similar to arterial hypoxia, disinhibition of neurons in the RVLM reduces the BAT SNA activation following bicuculline into the rRPa (81) and both anatomical (155) and electrophysiological (156) studies support the existence of a bulbospinal inhibitory pathway to SPNs from the RVLM. The pathway between the NTS and the BAT SPNs mediating the hypoxic inhibition of BAT metabolism remains to be elucidated.

4.3.2. Dorsomedial hypothalamus neurons drive BAT thermogenesis

The observation that transection of the neuraxis immediately caudal to the POA (approximately 1.3-1.8 mm caudal to bregma) increases BAT SNA and BAT thermogenesis (54) suggests that the POA projection neurons are inhibitory to BAT thermogenesis. In contrast, transections made in the midbrain, just caudal to the hypothalamus (approximately 4-4.5 mm caudal to bregma), do not increase basal levels of BAT thermogenesis in normothermic animals (142) and, in fact, reverse PGE₂-evoked increases in BAT SNA and thermogenesis (157, 158). The findings suggest that, although a long inhibitory pathway from the POA neurons to BAT sympathetic premotor neurons in the rRPa may contribute to the regulation of BAT thermogenesis, a source of excitatory drive to BAT thermogenesis must exist between the POA and the rostral midbrain. Several areas of the hypothalamus caudal to the POA, including the PVH, the ventromedial hypothalamus, the posterior hypothalamus and the DMH have been implicated in the control of BAT thermogenesis, however the anatomical specificity of the observations from studies has been called into question (159) due to the large injection volumes used, as well as the lack of appropriate anatomical control injections, or the use of electrical stimulation, electrolytic lesion or other methodological approaches that affect not only cell bodies but also fibers of passage.

There is strong evidence supporting a role for DMH neurons in the control of BAT thermogenesis. Administration of endotoxin or cold exposure increases the expression of Fos in neurons of the DMH (90, 125, 160, 161). Blockade of GABA_A receptors in the DMH increases BAT SNA (80) and BAT thermogenesis and heart rate (Figure 12A) (83), suggesting a tonic GABAergic inhibitory input to BAT thermogenic neurons within the DMH (Figure 2). This tonic GABAergic input to neurons within the DMH may originate in the POA as evidenced by the observation that POA-derived GABAergic axon swellings make close appositions with DMH neurons,

including those that project to the rRPa (Figure 12B)(77). In addition, inhibition of neurons in the DMH blocks febrile (Figure 12D, 12E) (77, 94, 157, 162) and cold-evoked (1) excitation of BAT SNA and thermogenesis, as well as shivering thermogenesis (163). Blockade of ionotropic glutamate receptors within the DMH also blocks the increase in BAT SNA and thermogenesis evoked by PGE₂ within the POA (Figure 12C) (94), indicating that a glutamatergic input to neurons within the DMH is essential for these febrile responses, though the source of this input has yet to be determined. Taken together these data support a model (Figure 2) in which a GABAergic inhibitory input from warm-sensitive neurons in the POA to BAT sympathoexcitatory neurons in the DMH is reduced by skin or core cooling or by PGE₂ acting on EP3 receptors within the POA, thereby allowing an increased discharge of DMH neurons that promote BAT thermogenesis.

Since neurons in the DMH do not project directly to sympathetic preganglionic neurons, these neurons likely contribute to BAT thermogenic sympathetic outflow by influencing the activity of the BAT sympathetic premotor neurons in the rRPa. The DMH contains neurons that project directly to the rRPa (77, 164-166), some of which express Fos in response to thermogenic stimuli such as cold (166), endotoxin administration or stress (160) and some of which receive GABAergic putative synapses from neurons in the MPO (77). Indeed, glutamate receptor activation within the rRPa is necessary for the increase in BAT SNA and thermogenesis evoked by disinhibition of neurons within the DMH (153).

Located in close proximity to the DMH and containing sympathetic premotor neurons, the paraventricular hypothalamic nucleus (PVH) has often been considered as a significant source of supraspinal drive in the regulation of BAT thermogenesis and energy expenditure. However, increasing the activity of PVH neurons with local nanoinjections of NMDA or bicuculline failed to increase BAT SNA or BAT temperature, but rather completely reversed the activations of BAT thermogenesis evoked by body cooling or by nanoinjections of PGE₂ into the MPO or of bicuculline into the DMH (140). In contrast, activation of PVH neurons was without effect on the BAT SNA increases evoked by injection of bicuculline into the rRPa (140). Thus, activation of a population of neurons in the PVH potentially inhibits BAT SNA, likely via activation of a GABAergic input to BAT sympathetic premotor neurons in the rRPa. Although the extensive connectivity between PVH and DMH (167) and the ability of bicuculline injections into the DMH to elicit Fos expression in the PVH (168) would support an interaction between DMH and PVH in the control of thermoregulatory responses, potentially through alterations of thyroid regulating hormone or thyroid stimulating hormone secretion, such mechanisms remain to be investigated.

4.3.3. Spinal sympathetic mechanisms controlling BAT thermogenesis and CVC

The discharges of BAT and CVC sympathetic preganglionic neurons (SPN) that determine the levels and

CNS pathways for thermoregulation

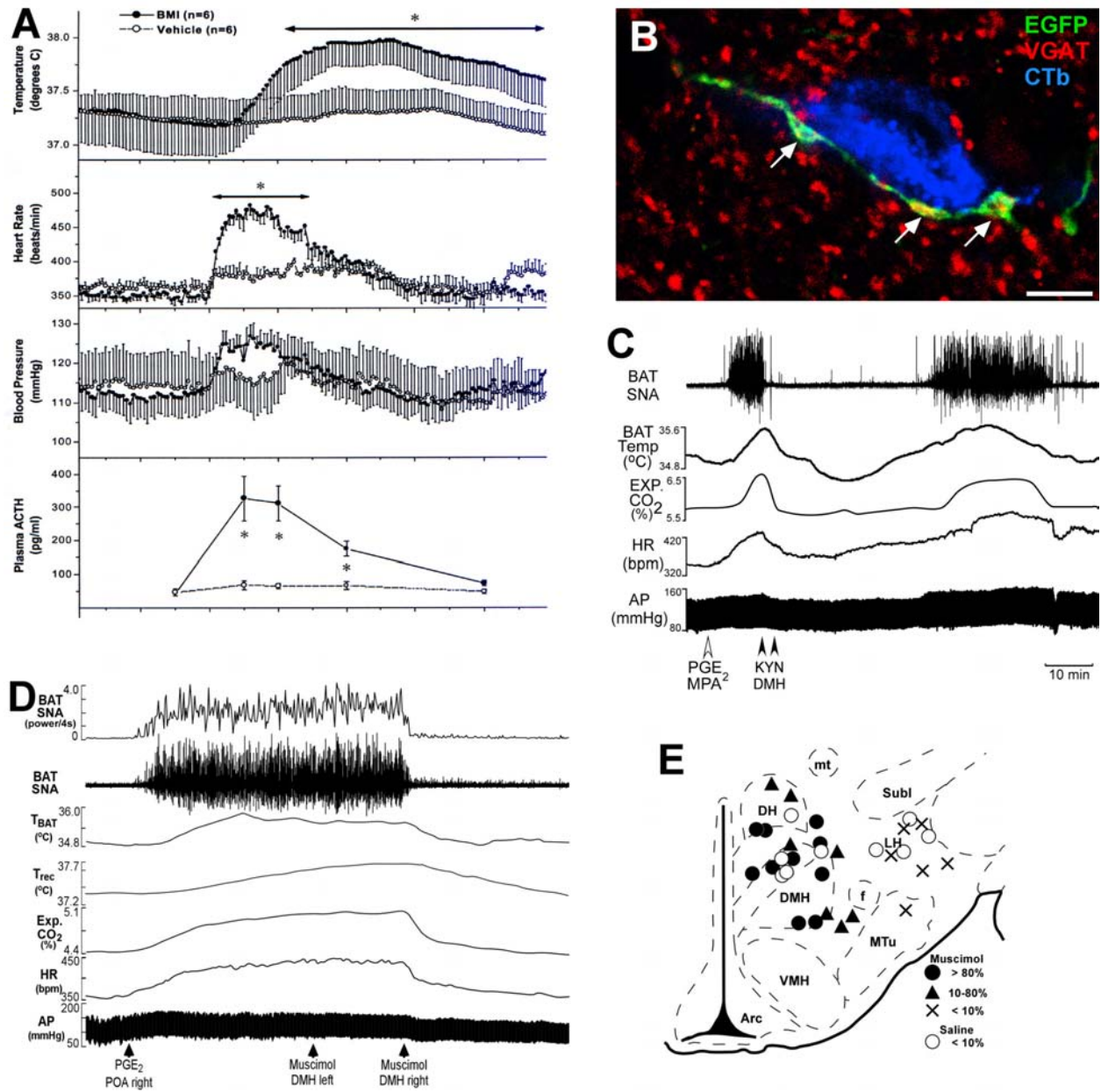


Figure 12. Role of dorsomedial hypothalamic neurons in BAT and HR thermoregulatory responses. **A**, in the conscious rat, disinhibition of neurons in the dorsomedial hypothalamus (DMH) with local injection of bicuculline (BMI) elicits increases in body temperature, heart rate and ACTH secretion. Reproduced with permission from (83). **B**, confocal image demonstrates immunohistochemically that axon terminals of POA GABAergic neurons double-labeled (yellow) with VGAT-immunoreactivity (red) and EGFP (green, following anterograde transport of Sindbis virus) make close appositions with DMH neurons that project directly to the rRPa (labeled with CTb immunoreactivity (blue)). Reproduced with permission from (77). **C**, blockade of glutamate receptors in the DMH with a nanoinjection of the glutamate receptor antagonist, kynurenic acid (KYN), reverses the increases in BAT SNA, in BAT temperature (thermogenesis), in expired CO₂ and in heart rate elicited by nanoinjection of the febrile mediator, PGE₂, into the medial preoptic area (MPA). Reproduced with permission from (94). **D**, inhibition of neuronal activity in the DMH with nanoinjections of muscimol eliminates the increases in BAT SNA, in BAT temperature, in expired CO₂ and in heart rate elicited by nanoinjection of PGE₂ into the POA. Reproduced with permission from (77). **E**, schematic map of the medial hypothalamus illustrating the concentrated localization within the DMH of sites at which injections of muscimol were efficacious in inhibiting PGE₂-evoked increases in BAT SNA. Reproduced with permission from (77).

the rhythmic bursting characteristics of BAT and CVC SNAs and, in turn, BAT thermogenesis and cutaneous heat

loss, are governed by their supraspinal and segmental inputs, some of which are mediated through a network of

CNS pathways for thermoregulation

spinal interneurons that influence BAT and CVC SPN excitabilities. A significant fraction of the BAT and CVC sympathetic premotor neurons in the rRPa are glutamatergic and/or serotonergic neurons. Consistent with these findings from viral retrograde tracing studies, 5-hydroxytryptamine (5-HT)-containing (169, 170) and VGLUT3-containing terminals synapse on SPNs (135, 171) or make close appositions with SPN dendrites (89, 171). SPNs contain ionotropic glutamate receptors (172, 173) and several subtypes of 5-HT receptors are located within the IML (174-178), although the specific neuronal subtypes expressing these receptors have not been determined. Viral inoculations of sympathetically-innervated tissues (179), including interscapular BAT (90), consistently label a population of spinal interneurons in the vicinity of the IML. Spinal GABAergic interneurons would appear to be among this population since they influence the discharge of SPNs (180). That such interneurons could receive inputs from the BAT premotor area in the rostral ventromedial medulla is suggested by the demonstration that VGLUT3- and GAD-67-containing terminals synapse on GABAergic neurons in the IML (135).

Nano-injection of glutamate or NMDA into the upper thoracic IML activates BAT SNA and BAT thermogenesis (Figure 13C) (89, 181) and blockade of glutamate receptors in the upper thoracic IML suppresses the increase in BAT thermogenesis evoked by bicuculline injection into rRPa (Figure 13A) (89). Axon terminals of rRPa neurons containing VGLUT3, a marker of glutamate neurotransmission, make close appositions to sympathetic preganglionic neurons in the IML (Figure 13B) (89). These findings support an essential role for spinal glutamate receptor activation in the IML in the control of BAT thermogenesis.

Serotonin injected into the T4 IML elicits a delayed activation of BAT SNA and BAT thermogenesis (Figure 13C) (181). Significantly, IML injection of 5-HT potentiates the BAT SNA response to subsequent NMDA injections into the IML (Figure 13C, 13D) (181). This potentiation by serotonin of glutamate receptor-mediated BAT activation even allows subthreshold doses of NMDA into the IML to increase BAT SNA (181). Interestingly, some putatively inhibitory inputs to the IML synapse on GABAergic dendrites (135) and 5-HT terminals also form close appositions with GABAergic interneurons in the central autonomic area (182). Such anatomical data in conjunction with the inhibitory signal transduction mechanisms for 5-HT_{1A} receptors are consistent with the possibility that the serotonergic potentiation of glutamate receptor-mediated increases in BAT SNA, which is blocked by antagonists of 5-HT_{1A}/5-HT₇ receptors (Figure 13D) (183), could occur via 5-HT_{1A} receptor-mediated inhibition of GABA inputs to BAT SPNs (183). An interaction of serotonin and glutamate neurotransmission in the IML is also significant in determining the CVC outflow, although the relevant serotonergic receptor is of the 5-HT_{2A} subtype (120). This is illustrated in Figure 13E, in which spinal application of a 5-HT_{2A} receptor antagonist markedly reduced the CVC sympathetic response to rRPa stimulation and subsequent blockade of spinal glutamate receptors

eliminated the residual CVC activation following rRPa stimulation (120).

That the serotonergic innervation provided by raphe neurons to IML neurons, including SPNs, plays a significant role in eliciting physiologically-relevant levels of BAT thermogenesis in cold defense is suggested by the increase in spinal 5-HT turnover (an index of 5-HT release) during cold exposure (184, 185) and by the effectiveness of 5-HT receptor antagonism in the T3-T6 IML in preventing the cooling-evoked stimulation of interscapular BAT SNA (186). While the mechanisms of the interaction between glutamatergic and serotonergic neurotransmission in the IML remain to be elucidated, their interdependence in normal cold defense responses is supported by the recent finding that mice that lack almost all central serotonergic neurons exhibit intact BAT thermogenesis in the environment of 10°C, but show blunted BAT thermogenesis in 7°C (187). The current data clearly demonstrate that the spinal cord is much more than a simple relay circuit driving BAT SNA and thermogenesis, however, the details of the spinal neurocircuitry involved in the rhythmicities in BAT sympathetic outflow and in the regulation of this thermogenic effector await future studies.

4.4. Cardiac thermogenesis

The central thermoregulatory network stimulates BAT and shivering thermogenesis in response to environmental cold challenges, to a fall in core body temperature or to the presence of pyrogenic cytokines and a sympathetically-mediated increase in heart rate occurs during each of these conditions. Since cardiac thermogenesis arises primarily from the inefficiency of energy utilization in cross-bridge cycling and calcium ion sequestration, increases in heart rate will elicit increased cardiac thermogenesis. In the rat, the increases in heart rate in response to cold or during fever (Figures 11, 12) parallel the activation of sympathetic BAT thermogenesis (1, 77, 146) and of shivering. Indeed, the tachycardia elicited under these conditions could contribute to the maintenance of cardiac output during the significant dilation of BAT blood vessels and would thus serve to distribute BAT- and shivering-generated heat more efficiently and to increase the availability of energy substrates to activated BAT and skeletal muscle.

The tachycardia accompanying thermoregulatory responses to activation of cold thermal afferents and to other stimuli expected to reduce the activity of warm-sensitive POA neurons, is driven in a feedforward manner rather than by activation of cardiovascular reflexes. The neural network mediating thermoregulatory and febrile increases in heart rate appears to parallel that described above for activating BAT thermogenesis (Figure 2). Thus, briefly, cutaneous, and possibly visceral, cold afferent signals to dorsal horn neurons are relayed via neurons in the LPBel (Figure 6) (27) to the MnPO (Figure 7) (37) where they activate GABAergic interneurons that inhibit warm-sensitive MPO neurons that project to inhibit sympathoexcitatory DMH neurons (Figure 12) that project to cardiac premotor neurons in the rRPa (80, 138) providing excitatory drive to cardiac sympathetic

CNS pathways for thermoregulation

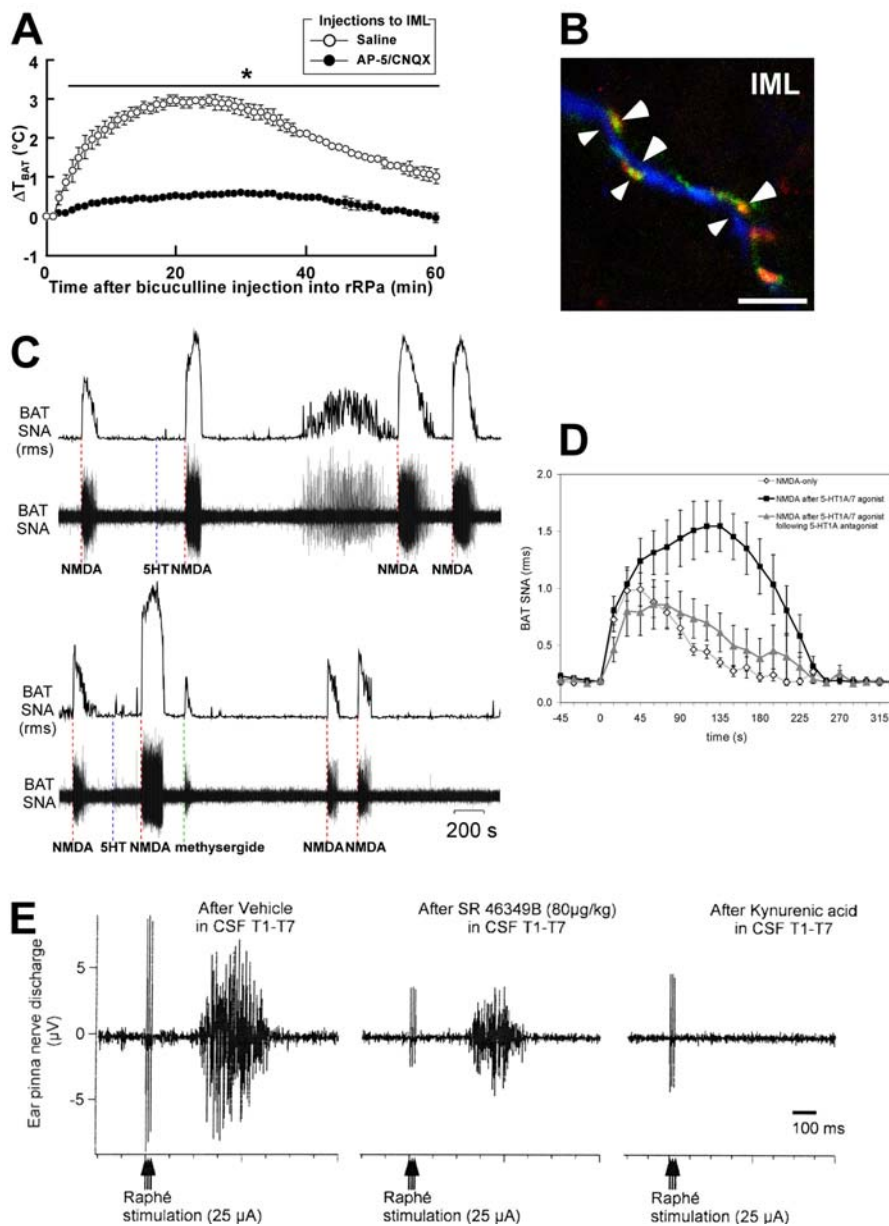


Figure 13. Spinal glutamatergic and serotonergic regulation of thermoregulatory effectors. **A**, blockade of thoracic spinal glutamate receptors significantly reduced the increase in BAT temperature elicited by disinhibition of neurons in the rRPa. Reproduced with permission from (89). **B**, confocal image demonstrates immunohistochemically that axon terminals of rRPa neurons double-labeled (yellow) with VGLUT3-immunoreactivity (red) and EGFP (green, following anterograde transport of Sindbis virus) make close appositions with sympathetic preganglionic neurons (labeled with ChAT immunoreactivity (blue)). Reproduced with permission from (89). **C**, upper panel, the increase in brown adipose tissue (BAT) sympathetic nerve activity (SNA) following nanoinjection of NMDA into the IML of the T4 spinal segment is potentiated by similar nanoinjection of serotonin (5-HT) into the T4 IML, which also causes a delayed increase in BAT SNA. **C**, lower panel, 5-HT-induced potentiation of spinal NMDA-evoked increase in BAT SNA is reversed by nanoinjection of the 5-HT receptor antagonist, methysergide, into the T4 IML. Reproduced with permission from (181). **D**, nanoinjection of the 5-HT_{1A/7} receptor agonist, 8-OH-DPAT, into the IML of the T4 spinal segment potentiates the increase in BAT SNA elicited by NMDA injection into the T4 IML and this potentiation is markedly reduced, but not completely reversed by T4 IML nanoinjection of the selective 5-HT_{1A} receptor antagonist, WAY 100635. Reproduced with permission from (183). **E**, increases in rabbit ear pinna cutaneous sympathetic nerve discharge elicited by electrical stimulation of the rRPa were markedly reduced by the 5-HT_{2A} receptor antagonist, SR 46349B, and completely reversed by further superfusion of the thoracic spinal cord with the non-selective glutamate antagonist, kynurenic acid. Reproduced with permission from (120).

preganglionic neurons. Viral retrograde tracing to identify central sympathetic pathways controlling the heart (188, 189) revealed infected neurons in the rostral ventrolateral and ventromedial (including rRPa) medulla and either disinhibition (with bicuculline) or activation (with glutamate receptor agonists) of neurons in the restricted region of the rRPa increases heart rate (92, 138, 145).

4.5. Shivering thermogenesis

Thermogenesis occurs to a greater or lesser extent in all tissues that use the energy in chemical bonds such as in ATP, since heat generation is a by-product of the inefficiency of mitochondrial ATP production and of ATP utilization. During the rapid, repeated skeletal muscle contractions of shivering, thermogenesis arises primarily from the inefficiency of energy utilization in cross-bridge cycling and calcium ion sequestration, and, to a lesser degree from mitochondrial membrane proton leak in the course of ATP production from fuel substrate oxidation. Shivering thermogenesis is the last cold-defense mechanism to be activated as its thermal threshold is lower than that for either cutaneous vasoconstriction or BAT thermogenesis, presumably reflecting the existence of a distinct population of preoptic warm-sensitive neurons that regulate shivering, but also in keeping with the high metabolic energy cost of shivering and the relative vulnerability of an animal during shivering as escape behavior would be more slowly mobilized. Although heat generation through shivering has long been recognized as an essential mechanism in cold defense and in the elevated body temperature in fever in both experimental animals and in humans (190, 191), the central neural mechanisms generating shivering and the thermoregulatory circuits controlling shivering are almost entirely unknown.

The muscle contractions of shivering result from rhythmic bursts of activity in the alpha-motoneurons innervating skeletal muscle fibers. The increased IA-afferent input in response to the simultaneous activation of gamma-motoneurons could play a role in determining alpha-motoneuron responsiveness and, in turn, in setting the shivering threshold and intensity (192) and frequency. The central neural network generating the cold-evoked bursts of alpha-motoneuron activity (Figure 2) is not well understood, but includes transmission of cutaneous cold afferent signals through the lateral parabrachial nucleus (27), integration of thermoregulatory signals in the preoptic area (121) and activation of fusimotor neurons that is dependent on neurons in the rostral ventromedial medulla (193, 194). A potential role for neurons in the rostral ventromedial medulla, including the rRPa, in shivering thermogenesis is suggested by the intense viral retrograde labeling in this region following inoculation into skeletal muscle (195). Increases in muscle EMG activity and shivering are also elicited by disinhibition of rostral ventromedial medullary neurons (196).

4.6. Evaporative cooling

Evaporation increases heat loss from the body surface and is a critical thermoregulatory strategy in ambient temperatures exceeding core temperature. With their large surface area of hairless skin, sweating is an

efficient evaporative cooling mechanism in humans. In contrast, rodents rely on increased salivary secretion and saliva spreading for evaporative cooling, while in other hairy animals, evaporation occurs from the respiratory tract during panting. The pathway mediating the increased sympathetic cholinergic outflow to sweat glands in a warm environment is unknown, but presumably includes the cutaneous warm thermal receptor afferent pathway involving the dorsal horn and the LPBd (Figure 2) and control of sweat gland-specific, spinal sympathetic preganglionic neurons by their supraspinal sympathetic premotor neurons. Saliva spreading is a more complex evaporative cooling behavior, involving both an autonomously-mediated increase in the secretion of protein-poor saliva and the somatically-mediated behavior of spreading the saliva on the body surface. Little is known about the pathways for the thermoregulatory increase in salivary secretion, although it is likely to include the cutaneous warm thermal receptor afferent pathway involving the dorsal horn and the LPBd (Figure 2) and salivatory premotor neurons in the PVH (197, 198). The loss of body water during evaporative cooling, which usually occurs in parallel with a large increase in cutaneous blood flow, has a significant effect on blood volume and plasma osmolarity and emphasizes the strong interaction between thermoregulatory and cardiovascular and osmotic control circuits during prolonged heat exposure, dehydration and exercise (199). Increased osmolarity has central effects on thermoregulatory responses to heating, eliciting an increase the internal temperature threshold for cutaneous vasodilation (200) and evaporative heat loss (201) and a reduction in sweating (202) and respiratory stimulation (203). As with saliva spreading, evaporative heat loss through panting has an autonomic component to increase fluid secretion in the respiratory tract and a somatic component to increase respiratory air flow across the upper respiratory tract. The pathways mediating thermoregulatory influences on respiratory activity remain to be investigated.

5. SUMMARY AND PERSPECTIVE

The principal thermoregulatory effectors are the cutaneous blood vessels for control of heat loss, the brown adipose tissue and skeletal muscle for thermogenesis and various, species-dependent mechanisms such as sweating, panting and saliva spreading for evaporative heat loss. The activation of these effectors is regulated by parallel but distinct, effector-specific, core efferent pathways within the central nervous system (Figure 2) that are strongly influenced by shared cutaneous thermal afferent signals. Cutaneous (and likely visceral) thermal sensory information is integrated, in an as yet unknown manner, at synapses in the spinal and trigeminal dorsal horns and subsequently within the lateral parabrachial nucleus, where cool and warm afferent signals are processed within anatomically distinct regions with projections to the POA. Within the POA, different, effector-specific populations of temperature-sensitive neurons, principally warm-sensitive neurons, provide the substrate not only for local (sometimes called “core”) temperature to influence the activation of each type of

CNS pathways for thermoregulation

thermoregulatory effector, but also for thermal sensory inputs, arriving via the LPB projection neurons, to be integrated with these local temperature influences to control the activation of each type of thermoregulatory effector. Different thermal sensitivities among populations of temperature-sensitive POA neurons may allow differential responsiveness of different effectors to changes in cutaneous vs. brain temperatures. It remains unknown whether and how these differing thermal sensitivities may be maintained under a variety of perturbing alterations in the external or internal thermal and neurochemical environments.

The core efferent pathway for thermoregulatory activation of BAT thermogenesis and heart rate involves a tonically-active inhibitory input from the POA to sympathoexcitatory neurons in the DMH, which project to sympathetic premotor neurons in the rRPa, which, in turn, provide the excitatory drive to sympathetic preganglionic neurons in the thoracic spinal cord that is transmitted via sympathetic ganglion cells to brown adipocytes and to cardiac pacemaker cells. From preliminary results, a similarly-organized core effector pathway is expected for the control of shivering thermogenesis, but considerable additional experimentation is necessary to define this circuit. The core efferent pathway for CVC also involves a tonically-active inhibition emanating from the POA. However, these POA projection neurons send axons to the rRPa where they influence the discharge of CVC sympathetic premotor neurons and, consequently, the level of excitation to CVC sympathetic preganglionic neurons in the thoracic and lumbar spinal cord that drive the release of transmitter from CVC sympathetic ganglion cells to elicit cutaneous vasoconstriction. Although they are expected to involve warm-sensitive neurons in the POA, the further details of the core efferent pathways for the thermoregulatory effectors mediating evaporative heat loss remain to be elucidated. Identifying key structures within each of these core thermoregulatory pathways provides a framework for increased understanding of the sites and mechanisms through which body temperature regulation is influenced by a wide variety of neurotransmitters, peptides, cytokines, and genetic, nutritional and perinatal (204) manipulations.

Within these core efferent pathways controlling thermoregulatory effectors, the sources and mechanisms responsible for the tonic discharge of key neuronal populations and for the synchronous bursting that characterizes the sympathetic outflows are unknown. Similarly puzzling is the neural basis for the tremor-like discharge in somatic motor neurons during shivering. The sites and mechanisms underlying the critical integration of thermogenesis with other homeostatic systems regulating oxygen and fuel substrate availability, body water, salt appetite and energy balance remain to be investigated. The projection neurons connecting important regions in the central thermogenic pathways have yet to be characterized, including the inhibitory output neurons of the POA, the excitatory output neurons in the DMH and the sympathetic premotor neurons in the rRPa and PPy regions of the medulla. The marked differences in temperature response

thresholds among thermoregulatory effectors suggests that significant differences should be expected among the populations of warm-sensitive POA projection neurons that control these effectors. We expect that the model circuit for central thermoregulatory control that we have proposed (Figure 2) will be embellished and corrected as we gain a further understanding of the functional organization of central thermoregulation.

6. ACKNOWLEDGEMENT

The authors are grateful for the institutional support of the research that contributed to this review: National Institutes of Health grants NS40987 (SFM) and DK57838 (SFM); the Japan Society for the Promotion of Science fellowship for research abroad (KN); a Special Coordination Fund for Promoting Science and Technology from the Ministry of Education, Culture, Sports, Science and Technology of Japan (KN); and funding from Takeda Science Foundation and Kowa Life Science Foundation (KN).

7. REFERENCES

1. Nakamura, K. & S. F. Morrison: Central efferent pathways mediating skin cooling-evoked sympathetic thermogenesis in brown adipose tissue. *Am J Physiol Regul Integr Comp Physiol*, 292, R127-36 (2007)
2. Bratincsak, A. & M. Palkovits: Evidence that peripheral rather than intracranial thermal signals induce thermoregulation. *Neuroscience*, 135, 525-32 (2005)
3. Lomax, P., E. Malveaux & R. E. Smith: Brain Temperatures in the Rat During Exposure to Low Environmental Temperatures. *Am J Physiol*, 207, 736-9 (1964)
4. McKemy, D. D., W. M. Neuhauser & D. Julius: Identification of a cold receptor reveals a general role for TRP channels in thermosensation. *Nature*, 416, 52-8 (2002)
5. Peier, A. M., A. Moqrich, A. C. Hergarden, A. J. Reeve, D. A. Andersson, G. M. Story, T. J. Earley, I. Dragoni, P. McIntyre, S. Bevan & A. Patapoutian: A TRP channel that senses cold stimuli and menthol. *Cell*, 108, 705-15 (2002)
6. Story, G. M., A. M. Peier, A. J. Reeve, S. R. Eid, J. Mosbacher, T. R. Hricik, T. J. Earley, A. C. Hergarden, D. A. Andersson, S. W. Hwang, P. McIntyre, T. Jegla, S. Bevan & A. Patapoutian: ANKTM1, a TRP-like channel expressed in nociceptive neurons, is activated by cold temperatures. *Cell*, 112, 819-29 (2003)
7. Bautista, D. M., J. Siemens, J. M. Glazer, P. R. Tsuruda, A. I. Basbaum, C. L. Stucky, S. E. Jordt & D. Julius: The menthol receptor TRPM8 is the principal detector of environmental cold. *Nature*, 448, 204-8 (2007)
8. Colburn, R. W., M. L. Lubin, D. J. Stone, Jr., Y. Wang, D. Lawrence, M. R. D'Andrea, M. R. Brandt, Y. Liu, C. M. Flores & N. Qin: Attenuated cold sensitivity in TRPM8 null mice. *Neuron*, 54, 379-86 (2007)

CNS pathways for thermoregulation

9. Dhaka, A., A. N. Murray, J. Mathur, T. J. Earley, M. J. Petrus & A. Patapoutian: TRPM8 is required for cold sensation in mice. *Neuron*, 54, 371-8 (2007)
10. Tajino, K., K. Matsumura, K. Kosada, T. Shibakusa, K. Inoue, T. Fushiki, H. Hosokawa & S. Kobayashi: Application of menthol to the skin of whole trunk in mice induces autonomic and behavioral heat-gain responses. *Am J Physiol Regul Integr Comp Physiol*, 293, R2128-35 (2007)
11. Kwan, K. Y., A. J. Allchorne, M. A. Vollrath, A. P. Christensen, D. S. Zhang, C. J. Woolf & D. P. Corey: TRPA1 contributes to cold, mechanical, and chemical nociception but is not essential for hair-cell transduction. *Neuron*, 50, 277-89 (2006)
12. Bautista, D. M., S. E. Jordt, T. Nikai, P. R. Tsuruda, A. J. Read, J. Poblete, E. N. Yamoah, A. I. Basbaum & D. Julius: TRPA1 mediates the inflammatory actions of environmental irritants and proalgesic agents. *Cell*, 124, 1269-82 (2006)
13. Guler, A. D., H. Lee, T. Iida, I. Shimizu, M. Tominaga & M. Caterina: Heat-evoked activation of the ion channel, TRPV4. *J Neurosci*, 22, 6408-14 (2002)
14. Peier, A. M., A. J. Reeve, D. A. Andersson, A. Moqrich, T. J. Earley, A. C. Hergarden, G. M. Story, S. Colley, J. B. Hogenesch, P. McIntyre, S. Bevan & A. Patapoutian: A heat-sensitive TRP channel expressed in keratinocytes. *Science*, 296, 2046-9 (2002)
15. Smith, G. D., M. J. Gunthorpe, R. E. Kelsell, P. D. Hayes, P. Reilly, P. Facer, J. E. Wright, J. C. Jerman, J. P. Walhin, L. Ooi, J. Egerton, K. J. Charles, D. Smart, A. D. Randall, P. Anand & J. B. Davis: TRPV3 is a temperature-sensitive vanilloid receptor-like protein. *Nature*, 418, 186-90 (2002)
16. Watanabe, H., J. Vriens, S. H. Suh, C. D. Benham, G. Droogmans & B. Nilius: Heat-evoked activation of TRPV4 channels in a HEK293 cell expression system and in native mouse aorta endothelial cells. *J Biol Chem*, 277, 47044-51 (2002)
17. Xu, H., I. S. Ramsey, S. A. Kotecha, M. M. Moran, J. A. Chong, D. Lawson, P. Ge, J. Lilly, I. Silos-Santiago, Y. Xie, P. S. DiStefano, R. Curtis & D. E. Clapham: TRPV3 is a calcium-permeable temperature-sensitive cation channel. *Nature*, 418, 181-6 (2002)
18. Hellon, R. F., H. Hensel & K. Schafer: Thermal receptors in the scrotum of the rat. *J Physiol*, 248, 349-57 (1975)
19. Hensel, H., A. Iggo & I. Witt: A quantitative study of sensitive cutaneous thermoreceptors with C afferent fibres. *J Physiol*, 153, 113-26 (1960)
20. Iriuchijima, J. & Y. Zotterman: The specificity of afferent cutaneous C fibres in mammals. *Acta Physiol Scand*, 49, 267-78 (1960)
21. Xu, H., M. Delling, J. C. Jun & D. E. Clapham: Oregano, thyme and clove-derived flavors and skin sensitizers activate specific TRP channels. *Nat Neurosci*, 9, 628-35 (2006)
22. Lee, H., T. Iida, A. Mizuno, M. Suzuki & M. J. Caterina: Altered thermal selection behavior in mice lacking transient receptor potential vanilloid 4. *J Neurosci*, 25, 1304-10 (2005)
23. Moqrich, A., S. W. Hwang, T. J. Earley, M. J. Petrus, A. N. Murray, K. S. Spencer, M. Andahazy, G. M. Story & A. Patapoutian: Impaired thermosensation in mice lacking TRPV3, a heat and camphor sensor in the skin. *Science*, 307, 1468-72 (2005)
24. Liedtke, W. & J. M. Friedman: Abnormal osmotic regulation in *trpv4*^{-/-} mice. *Proc Natl Acad Sci U S A*, 100, 13698-703 (2003)
25. Craig, A. D.: How do you feel? Interoception: the sense of the physiological condition of the body. *Nat Rev Neurosci*, 3, 655-66 (2002)
26. Craig, A. D., M. C. Bushnell, E. T. Zhang & A. Blomqvist: A thalamic nucleus specific for pain and temperature sensation. *Nature*, 372, 770-3 (1994)
27. Nakamura, K. & S. F. Morrison: A thermosensory pathway that controls body temperature. *Nat Neurosci*, 11, 62-71 (2008) doi:10.1038/nn2027.
28. Hylden, J. L., F. Anton & R. L. Nahin: Spinal lamina I projection neurons in the rat: collateral innervation of parabrachial area and thalamus. *Neuroscience*, 28, 27-37 (1989)
29. Li, J., K. Xiong, Y. Pang, Y. Dong, T. Kaneko & N. Mizuno: Medullary dorsal horn neurons providing axons to both the parabrachial nucleus and thalamus. *J Comp Neurol*, 498, 539-51 (2006)
30. Andrew, D. & A. D. Craig: Spinothalamic lamina I neurones selectively responsive to cutaneous warming in cats. *J Physiol*, 537, 489-95 (2001)
31. Craig, A. D., K. Krout & D. Andrew: Quantitative response characteristics of thermoreceptive and nociceptive lamina I spinothalamic neurons in the cat. *J Neurophysiol*, 86, 1459-80 (2001)
32. Bratincsak, A. & M. Palkovits: Activation of brain areas in rat following warm and cold ambient exposure. *Neuroscience*, 127, 385-97 (2004)
33. Bernard, J. F., R. Dallel, P. Raboisson, L. Villanueva & D. Le Bars: Organization of the efferent projections from the spinal cervical enlargement to the parabrachial area and periaqueductal gray: a PHA-L study in the rat. *J Comp Neurol*, 353, 480-505 (1995)

CNS pathways for thermoregulation

34. Cechetto, D. F., D. G. Standaert & C. B. Saper: Spinal and trigeminal dorsal horn projections to the parabrachial nucleus in the rat. *J Comp Neurol*, 240, 153-60 (1985)
35. Feil, K. & H. Herbert: Topographic organization of spinal and trigeminal somatosensory pathways to the rat parabrachial and Kolliker-Fuse nuclei. *J Comp Neurol*, 353, 506-28 (1995)
36. Kobayashi, A. & T. Osaka: Involvement of the parabrachial nucleus in thermogenesis induced by environmental cooling in the rat. *Pflugers Arch*, 446, 760-5 (2003)
37. Nakamura, K. & S. F. Morrison: Preoptic mechanism for cold-defensive responses to skin cooling. *J Physiol*, 586, 2611-20 (2008)
38. Nakamura, K. & S. F. Morrison: A thermosensory pathway mediating heat defense responses. *Proc Natl Acad Sci USA*, in press, (2010)
39. Gupta, B. N., K. Nier & H. Hensel: Cold-sensitive afferents from the abdomen. *Pflugers Arch*, 380, 203-4 (1979)
40. Riedel, W.: Warm receptors in the dorsal abdominal wall of the rabbit. *Pflugers Arch*, 361, 205-6 (1976)
41. Geerling, J. C. & A. D. Loewy: Central regulation of sodium appetite. *Exp Physiol*, 93, 178-209 (2008)
42. Saper, C. B.: The central autonomic nervous system: conscious visceral perception and autonomic pattern generation. *Annu Rev Neurosci*, 25, 433-69 (2002)
43. Guieu, J. D. & J. D. Hardy: Effects of heating and cooling of the spinal cord on preoptic unit activity. *J Appl Physiol*, 29, 675-83 (1970)
44. Tominaga, M., M. J. Caterina, A. B. Malmberg, T. A. Rosen, H. Gilbert, K. Skinner, B. E. Raumann, A. I. Basbaum & D. Julius: The cloned capsaicin receptor integrates multiple pain-producing stimuli. *Neuron*, 21, 531-43 (1998)
45. Forster, R. E. & T. B. Ferguson: Relationship between hypothalamic temperature and thermo-regulatory effectors in unanesthetized cat. *Am J Physiol*, 169, 255-69 (1952)
46. Hellstrom, B. & H. T. Hammel: Some characteristics of temperature regulation in the unanesthetized dog. *Am J Physiol*, 213, 547-56 (1967)
47. Almeida, M. C., A. A. Steiner, L. G. Branco & A. A. Romanovsky: Neural substrate of cold-seeking behavior in endotoxin shock. *PLoS ONE*, 1, e1 (2006)
48. Nakayama, T., J. S. Eisenman & J. D. Hardy: Single unit activity of anterior hypothalamus during local heating. *Science*, 134, 560-1 (1961)
49. Nakayama, T., H. Hammel, J. Hardy & J. Eisenman: Thermal stimulation of electrical activity of single units of the preoptic region. *Am J Physiol* 204, 1122-1126 (1963)
50. Boulant, J. A. & J. D. Hardy: The effect of spinal and skin temperatures on the firing rate and thermosensitivity of preoptic neurones. *J Physiol*, 240, 639-60 (1974)
51. Boulant, J. A. & J. B. Dean: Temperature receptors in the central nervous system. *Annu Rev Physiol*, 48, 639-54 (1986)
52. Hammel, H. T., J. D. Hardy & M. M. Fusco: Thermoregulatory responses to hypothalamic cooling in unanesthetized dogs. *Am J Physiol*, 198, 481-6 (1960)
53. Imai-Matsumura, K., K. Matsumura & T. Nakayama: Involvement of ventromedial hypothalamus in brown adipose tissue thermogenesis induced by preoptic cooling in rats. *Jpn J Physiol*, 34, 939-43 (1984)
54. Chen, X. M., T. Hosono, T. Yoda, Y. Fukuda & K. Kanosue: Efferent projection from the preoptic area for the control of non-shivering thermogenesis in rats. *J Physiol*, 512 (Pt 3), 883-92 (1998)
55. Kobayashi, S., A. Hori, K. Matsumura & H. Hosokawa: Point: Heat-induced membrane depolarization of hypothalamic neurons: a putative mechanism of central thermosensitivity. *Am J Physiol Regul Integr Comp Physiol*, 290, R1479-80; discussion R1484 (2006)
56. Boulant, J. A.: Counterpoint: Heat-induced membrane depolarization of hypothalamic neurons: an unlikely mechanism of central thermosensitivity. *Am J Physiol Regul Integr Comp Physiol*, 290, R1481-4; discussion R1484 (2006)
57. Wechselberger, M., C. L. Wright, G. A. Bishop & J. A. Boulant: Ionic channels and conductance-based models for hypothalamic neuronal thermosensitivity. *Am J Physiol Regul Integr Comp Physiol*, 291, R518-29 (2006)
58. Szymusiak, R. & E. Satinoff: Acute thermoregulatory effects of unilateral electrolytic lesions of the medial and lateral preoptic area in rats. *Physiol Behav*, 28, 161-70 (1982)
59. Osaka, T.: Cold-induced thermogenesis mediated by GABA in the preoptic area of anesthetized rats. *Am J Physiol Regul Integr Comp Physiol*, 287, R306-13 (2004)
60. Zaretsky, D. V., J. L. Hunt, M. V. Zaretskaia & J. A. DiMicco: Microinjection of prostaglandin E2 and muscimol into the preoptic area in conscious rats: comparison of effects on plasma adrenocorticotrophic hormone (ACTH), body temperature, locomotor activity, and cardiovascular function. *Neurosci Lett*, 397, 291-6 (2006)
61. Uschakov, A., H. Gong, D. McGinty & R. Szymusiak: Efferent projections from the median preoptic nucleus to

CNS pathways for thermoregulation

- sleep- and arousal-regulatory nuclei in the rat brain. *Neuroscience*, 150, 104-20 (2007)
62. Gong, H., D. McGinty, R. Guzman-Marin, K. T. Chew, D. Stewart & R. Szymusiak: Activation of c-fos in GABAergic neurons in the preoptic area during sleep and in response to sleep deprivation. *J Physiol*, 556, 935-46 (2004)
63. Nakamura, K., K. Matsumura, T. Kaneko, S. Kobayashi, H. Katoh & M. Negishi: The rostral raphe pallidus nucleus mediates pyrogenic transmission from the preoptic area. *Journal of Neuroscience*, 22, 4600-10 (2002)
64. Romanovsky, A. A.: Do fever and anapyrexia exist? Analysis of set point-based definitions. *Am J Physiol Regul Integr Comp Physiol*, 287, R992-5 (2004)
65. Elmquist, J. K., T. E. Scammell & C. B. Saper: Mechanisms of CNS response to systemic immune challenge: the febrile response. *Trends Neurosci*, 20, 565-70 (1997)
66. Matsumura, K., C. Cao, M. Ozaki, H. Morii, K. Nakadate & Y. Watanabe: Brain endothelial cells express cyclooxygenase-2 during lipopolysaccharide-induced fever: light and electron microscopic immunocytochemical studies. *J Neurosci*, 18, 6279-89 (1998)
67. Yamagata, K., K. Matsumura, W. Inoue, T. Shiraki, K. Suzuki, S. Yasuda, H. Sugiura, C. Cao, Y. Watanabe & S. Kobayashi: Coexpression of microsomal-type prostaglandin E synthase with cyclooxygenase-2 in brain endothelial cells of rats during endotoxin-induced fever. *J Neurosci*, 21, 2669-77 (2001)
68. Stitt, J. T.: Prostaglandin E1 fever induced in rabbits. *J Physiol*, 232, 163-79 (1973)
69. Williams, J. W., T. A. Rudy, T. L. Yaksh & C. T. Viswanathan: An extensive exploration of the rat brain for sites mediating prostaglandin-induced hyperthermia. *Brain Res*, 120, 251-62 (1977)
70. Scammell, T. E., J. K. Elmquist, J. D. Griffin & C. B. Saper: Ventromedial preoptic prostaglandin E2 activates fever-producing autonomic pathways. *J Neurosci*, 16, 6246-54 (1996)
71. Nakamura, K., T. Kaneko, Y. Yamashita, H. Hasegawa, H. Katoh, A. Ichikawa & M. Negishi: Immunocytochemical localization of prostaglandin EP3 receptor in the rat hypothalamus. *Neurosci Lett*, 260, 117-20 (1999)
72. Nakamura, K., T. Kaneko, Y. Yamashita, H. Hasegawa, H. Katoh & M. Negishi: Immunohistochemical localization of prostaglandin EP3 receptor in the rat nervous system. *J Comp Neurol*, 421, 543-69 (2000)
73. Oka, T., K. Oka, T. E. Scammell, C. Lee, J. F. Kelly, F. Nantel, J. K. Elmquist & C. B. Saper: Relationship of EP(1-4) prostaglandin receptors with rat hypothalamic cell groups involved in lipopolysaccharide fever responses. *J Comp Neurol*, 428, 20-32 (2000)
74. Ushikubi, F., E. Segi, Y. Sugimoto, T. Murata, T. Matsuoka, T. Kobayashi, H. Hizaki, K. Tuboi, M. Katsuyama, A. Ichikawa, T. Tanaka, N. Yoshida & S. Narumiya: Impaired febrile response in mice lacking the prostaglandin E receptor subtype EP3. *Nature*, 395, 281-4 (1998)
75. Oka, T., K. Oka, T. Kobayashi, Y. Sugimoto, A. Ichikawa, F. Ushikubi, S. Narumiya & C. B. Saper: Characteristics of thermoregulatory and febrile responses in mice deficient in prostaglandin EP1 and EP3 receptors. *J Physiol*, 551, 945-54 (2003)
76. Lazarus, M., K. Yoshida, R. Coppari, C. E. Bass, T. Mochizuki, B. B. Lowell & C. B. Saper: EP3 prostaglandin receptors in the median preoptic nucleus are critical for fever responses. *Nat Neurosci*, 10, 1131-3 (2007)
77. Nakamura, Y., K. Nakamura, K. Matsumura, S. Kobayashi, T. Kaneko & S. F. Morrison: Direct pyrogenic input from prostaglandin EP3 receptor-expressing preoptic neurons to the dorsomedial hypothalamus. *Eur J Neurosci*, 22, 3137-46 (2005)
78. Nakamura, Y., K. Nakamura & S. F. Morrison: Different populations of prostaglandin EP3 receptor-expressing preoptic neurons project to two fever-mediating sympathoexcitatory brain regions. *Neuroscience*, 161, 614-20 (2009)
79. Yoshida, K., K. Nakamura, K. Matsumura, K. Kanosue, M. Konig, H. J. Thiel, Z. Boldogkoi, I. Toth, J. Roth, R. Gerstberger & T. Hubschle: Neurons of the rat preoptic area and the raphe pallidus nucleus innervating the brown adipose tissue express the prostaglandin E receptor subtype EP3. *Eur J Neurosci*, 18, 1848-60 (2003)
80. Cao, W. H., W. Fan & S. F. Morrison: Medullary pathways mediating specific sympathetic responses to activation of dorsomedial hypothalamus. *Neuroscience*, 126, 229-40 (2004)
81. Morrison, S. F.: RVLM and raphe differentially regulate sympathetic outflows to splanchnic and brown adipose tissue. *Am J Physiol*, 276, R962-73 (1999)
82. Morrison, S. F., A. F. Sved & A. M. Passerin: GABA-mediated inhibition of raphe pallidus neurons regulates sympathetic outflow to brown adipose tissue. *Am J Physiol*, 276, R290-7 (1999)
83. Zaretskaia, M. V., D. V. Zaretsky, A. Shekhar & J. A. DiMicco: Chemical stimulation of the dorsomedial hypothalamus evokes non-shivering thermogenesis in anesthetized rats. *Brain Research*, 928, 113-25 (2002)
84. Narumiya, S., Y. Sugimoto & F. Ushikubi: Prostanoid receptors: structures, properties, and functions. *Physiol Rev*, 79, 1193-226 (1999)

CNS pathways for thermoregulation

85. Ranel, H. J. & J. D. Griffin: The effects of prostaglandin E2 on the firing rate activity of thermosensitive and temperature insensitive neurons in the ventromedial preoptic area of the rat hypothalamus. *Brain Res*, 964, 42-50 (2003)
86. Schoener, E. P. & S. C. Wang: Effects of locally administered prostaglandin E1 on anterior hypothalamic neurons. *Brain Res*, 117, 157-62 (1976)
87. Steiner, A. A., J. Antunes-Rodrigues & L. G. Branco: Role of preoptic second messenger systems (cAMP and cGMP) in the febrile response. *Brain Res*, 944, 135-45 (2002)
88. Feleder, C., V. Perlik & C. M. Blatteis: Preoptic norepinephrine mediates the febrile response of guinea pigs to lipopolysaccharide. *Am J Physiol Regul Integr Comp Physiol*, 293, R1135-43 (2007)
89. Nakamura, K., K. Matsumura, T. Hubschle, Y. Nakamura, H. Hioki, F. Fujiyama, Z. Boldogkoi, M. Konig, H. J. Thiel, R. Gerstberger, S. Kobayashi & T. Kaneko: Identification of sympathetic premotor neurons in medullary raphe regions mediating fever and other thermoregulatory functions. *J Neurosci*, 24, 5370-80 (2004)
90. Cano, G., A. M. Passerin, J. C. Schiltz, J. P. Card, S. F. Morrison & A. F. Sved: Anatomical substrates for the central control of sympathetic outflow to interscapular adipose tissue during cold exposure. *J Comp Neurol*, 460, 303-26 (2003)
91. Smith, J. E., A. S. Jansen, M. P. Gilbey & A. D. Loewy: CNS cell groups projecting to sympathetic outflow of tail artery: neural circuits involved in heat loss in the rat. *Brain Res*, 786, 153-64 (1998)
92. Madden, C. J. & S. F. Morrison: Excitatory amino acid receptor activation in the raphe pallidus area mediates prostaglandin-evoked thermogenesis. *Neuroscience*, 122, 5-15 (2003)
93. Rathner, J. A., C. J. Madden & S. F. Morrison: Central pathway for spontaneous and prostaglandin E2-evoked cutaneous vasoconstriction. *Am J Physiol Regul Integr Comp Physiol*, 295, R343-54 (2008)
94. Madden, C. J. & S. F. Morrison: Excitatory amino acid receptors in the dorsomedial hypothalamus mediate prostaglandin-evoked thermogenesis in brown adipose tissue. *Am J Physiol Regul Integr Comp Physiol*, 286, R320-5 (2004)
95. Nagashima, K., S. Nakai, M. Tanaka & K. Kanosue: Neuronal circuitries involved in thermoregulation. *Autonomic Neuroscience-Basic & Clinical*, 85, 18-25 (2000)
96. Romanovsky, A. A.: Thermoregulation: some concepts have changed. Functional architecture of the thermoregulatory system. *American Journal of Physiology* - *Regulatory Integrative & Comparative Physiology*, 292, R37-46 (2007)
97. Roberts, W. W. & J. R. Martin: Effects of lesions in central thermosensitive areas on thermoregulatory responses in rat. *Physiol Behav*, 19, 503-11 (1977)
98. Satinoff, E. & J. Rutstein: Behavioral thermoregulation in rats with anterior hypothalamic lesions. *J Comp Physiol Psychol*, 71, 77-82 (1970)
99. Schulze, G., M. Tetzner & H. Topolinski: Operant thermoregulation of rats with anterior hypothalamic lesions. *Naunyn Schmiedebergs Arch Pharmacol*, 318, 43-8 (1981)
100. Carlisle, H. J.: Effect of preoptic and anterior hypothalamic lesions on behavioral thermoregulation in the cold. *J Comp Physiol Psychol*, 69, 391-402 (1969)
101. Wallin, B. G. & N. Charkoudian: Sympathetic neural control of integrated cardiovascular function: insights from measurement of human sympathetic nerve activity. *Muscle Nerve*, 36, 595-614 (2007)
102. Kellogg, D. L., Jr., G. J. Hodges, C. R. Orozco, T. M. Phillips, J. L. Zhao & J. M. Johnson: Cholinergic mechanisms of cutaneous active vasodilation during heat stress in cystic fibrosis. *J Appl Physiol*, 103, 963-8 (2007)
103. Holowatz, L. A., C. S. Thompson, C. T. Minson & W. L. Kenney: Mechanisms of acetylcholine-mediated vasodilatation in young and aged human skin. *J Physiol*, 563, 965-73 (2005)
104. Hodges, G. J., D. N. Jackson, L. Mattar, J. M. Johnson & J. K. Shoemaker: Neuropeptide Y and neurovascular control in skeletal muscle and skin. *Am J Physiol Regul Integr Comp Physiol* (2009)
105. Hodges, G. J., W. A. Kosiba, K. Zhao & J. M. Johnson: The involvement of norepinephrine, neuropeptide Y, and nitric oxide in the cutaneous vasodilator response to local heating in humans. *J Appl Physiol*, 105, 233-40 (2008)
106. Anderson, C. R., A. Bergner & S. M. Murphy: How many types of cholinergic sympathetic neuron are there in the rat stellate ganglion? *Neuroscience*, 140, 567-76 (2006)
107. O'Leary, D. S., J. M. Johnson & W. F. Taylor: Mode of neural control mediating rat tail vasodilation during heating. *J Appl Physiol*, 59, 1533-8 (1985)
108. Escourrou, P., P. R. Freund, L. B. Rowell & D. G. Johnson: Splanchnic vasoconstriction in heat-stressed men: role of renin-angiotensin system. *J Appl Physiol*, 52, 1438-43 (1982)
109. Kregel, K. C., P. T. Wall & C. V. Gisolfi: Peripheral vascular responses to hyperthermia in the rat. *J Appl Physiol*, 64, 2582-8 (1988)

CNS pathways for thermoregulation

110. Minson, C. T., S. L. Wladkowski, J. A. Pawelczyk & W. L. Kenney: Age, splanchnic vasoconstriction, and heat stress during tilting. *Am J Physiol*, 276, R203-12 (1999)
111. Gorman, A. J. & D. W. Proppe: Mechanisms producing tachycardia in conscious baboons during environmental heat stress. *J Appl Physiol*, 56, 441-6 (1984)
112. Stauss, H. M., D. A. Morgan, K. E. Anderson, M. P. Massett & K. C. Kregel: Modulation of baroreflex sensitivity and spectral power of blood pressure by heat stress and aging. *Am J Physiol*, 272, H776-84 (1997)
113. Rathner, J. A. & R. M. McAllen: The lumbar preganglionic sympathetic supply to rat tail and hindpaw. *J Auton Nerv Syst*, 69, 127-31 (1998)
114. Toth, I. E., D. E. Toth, Z. Boldogkoi, A. Hornyak, M. Palkovits & W. W. Blessing: Serotonin-synthesizing neurons in the rostral medullary raphe/parapyramidal region transneuronally labelled after injection of pseudorabies virus into the rat tail. *Neurochem Res*, 31, 277-86 (2006)
115. Tanaka, M., K. Nagashima, R. M. McAllen & K. Kanosue: Role of the medullary raphe in thermoregulatory vasomotor control in rats. *J Physiol*, 540, 657-64 (2002)
116. Blessing, W. W. & E. Nalivaiko: Raphe magnus/pallidus neurons regulate tail but not mesenteric arterial blood flow in rats. *Neuroscience*, 105, 923-9 (2001)
117. Ootsuka, Y. & R. M. McAllen: Interactive drives from two brain stem premotor nuclei are essential to support rat tail sympathetic activity. *Am J Physiol Regul Integr Comp Physiol*, 289, R1107-15 (2005)
118. Blessing, W. W., Y. H. Yu & E. Nalivaiko: Raphe pallidus and parapyramidal neurons regulate ear pinna vascular conductance in the rabbit. *Neurosci Lett*, 270, 33-6 (1999)
119. Ootsuka, Y. & W. W. Blessing: Inhibition of medullary raphe/parapyramidal neurons prevents cutaneous vasoconstriction elicited by alerting stimuli and by cold exposure in conscious rabbits. *Brain Res*, 1051, 189-93 (2005)
120. Ootsuka, Y. & W. W. Blessing: Activation of slowly conducting medullary raphe-spinal neurons, including serotonergic neurons, increases cutaneous sympathetic vasomotor discharge in rabbit. *Am J Physiol Regul Integr Comp Physiol*, 288, R909-18 (2005)
121. Zhang, Y. H., M. Yanase-Fujiwara, T. Hosono & K. Kanosue: Warm and cold signals from the preoptic area: which contribute more to the control of shivering in rats? *J Physiol*, 485 (Pt 1), 195-202 (1995)
122. Tanaka, M. & R. M. McAllen: A subsidiary fever center in the medullary raphe? *Am J Physiol Regul Integr Comp Physiol*, 289, R1592-8 (2005)
123. Tanaka, M., M. J. McKinley & R. M. McAllen: Roles of two preoptic cell groups in tonic and febrile control of rat tail sympathetic fibers. *Am J Physiol Regul Integr Comp Physiol*, 296, R1248-57 (2009)
124. Yoshida, K., M. Konishi, K. Nagashima, C. B. Saper & K. Kanosue: Fos activation in hypothalamic neurons during cold or warm exposure: projections to periaqueductal gray matter. *Neuroscience*, 133, 1039-46 (2005)
125. Yoshida, K., M. Maruyama, T. Hosono, K. Nagashima, Y. Fukuda, R. Gerstberger & K. Kanosue: Fos expression induced by warming the preoptic area in rats. *Brain Research*, 933, 109-17 (2002)
126. Zhang, Y. H., T. Hosono, M. Yanase-Fujiwara, X. M. Chen & K. Kanosue: Effect of midbrain stimulations on thermoregulatory vasomotor responses in rats. *J Physiol (Lond)*, 503, 177-86 (1997)
127. Cannon, B. & J. Nedergaard: Brown adipose tissue: function and physiological significance. *Physiol Rev*, 84, 277-359 (2004)
128. Golozoubova, V., B. Cannon & J. Nedergaard: UCP1 is essential for adaptive adrenergic nonshivering thermogenesis. *Am J Physiol Endocrinol Metab*, 291, E350-7 (2006)
129. Nedergaard, J., T. Bengtsson & B. Cannon: Unexpected evidence for active brown adipose tissue in adult humans. *Am J Physiol Endocrinol Metab*, 293, E444-52 (2007)
130. Cypess, A. M., S. Lehman, G. Williams, I. Tal, D. Rodman, A. B. Goldfine, F. C. Kuo, E. L. Palmer, Y. H. Tseng, A. Doria, G. M. Kolodny & C. R. Kahn: Identification and importance of brown adipose tissue in adult humans. *N Engl J Med*, 360, 1509-17 (2009)
131. van Marken Lichtenbelt, W. D., J. W. Vanhommerig, N. M. Smulders, J. M. Drossaerts, G. J. Kemerink, N. D. Bouvy, P. Schrauwen & G. J. Teule: Cold-activated brown adipose tissue in healthy men. *N Engl J Med*, 360, 1500-8 (2009)
132. Virtanen, K. A., M. E. Lidell, J. Orava, M. Heglind, R. Westergren, T. Niemi, M. Taittonen, J. Laine, N. J. Savisto, S. Enerback & P. Nuutila: Functional brown adipose tissue in healthy adults. *N Engl J Med*, 360, 1518-25 (2009)
133. Bamshad, M., C. K. Song & T. J. Bartness: CNS origins of the sympathetic nervous system outflow to brown adipose tissue. *Am J Physiol*, 276, R1569-78 (1999)
134. Oldfield, B. J., M. E. Giles, A. Watson, C. Anderson, L. M. Colvill & M. J. McKinley: The neurochemical characterisation of hypothalamic pathways projecting polysynaptically to brown adipose tissue in the rat. *Neuroscience*, 110, 515-26 (2002)

CNS pathways for thermoregulation

135. Stornetta, R. L., D. L. Rosin, J. R. Simmons, T. J. McQuiston, N. Vujovic, M. C. Weston & P. G. Guyenet: Coexpression of vesicular glutamate transporter-3 and gamma-aminobutyric acidergic markers in rat rostral medullary raphe and intermediolateral cell column. *J Comp Neurol*, 492, 477-94 (2005)
136. Martin-Cora, F. J., C. A. Fornal, C. W. Metzler & B. L. Jacobs: Single-unit responses of serotonergic medullary and pontine raphe neurons to environmental cooling in freely moving cats. *Neuroscience*, 98, 301-9 (2000)
137. Nason, M. W., Jr. & P. Mason: Medullary raphe neurons facilitate brown adipose tissue activation. *Journal of Neuroscience*, 26, 1190-8 (2006)
138. Cao, W. H. & S. F. Morrison: Disinhibition of rostral raphe pallidus neurons increases cardiac sympathetic nerve activity and heart rate. *Brain Res*, 980, 1-10 (2003)
139. Nakamura, K., K. Matsumura, S. Kobayashi & T. Kaneko: Sympathetic premotor neurons mediating thermoregulatory functions. *Neuroscience Research*, 51, 1-8 (2005)
140. Madden, C. J. & S. F. Morrison: Neurons in the paraventricular nucleus of the hypothalamus inhibit sympathetic outflow to brown adipose tissue. *Am J Physiol Regul Integr Comp Physiol*, 296, R831-43 (2009)
141. Amini-Sereshki, L. & M. R. Zarrindast: Brain stem tonic inhibition of thermoregulation in the rat. *Am J Physiol*, 247, R154-9 (1984)
142. Rothwell, N. J., M. J. Stock & A. J. Thexton: Decerebration activates thermogenesis in the rat. *J Physiol (Lond)*, 342, 15-22 (1983)
143. Shibata, M., R. H. Benzi, J. Seydoux & L. Girardier: Hyperthermia induced by pre-pontine knife-cut: evidence for a tonic inhibition of non-shivering thermogenesis in anaesthetized rat. *Brain Res*, 436, 273-82 (1987)
144. Shibata, M., M. Iriki, J. Arita, T. Kiyohara, T. Nakashima, S. Miyata & T. Matsukawa: Procaine microinjection into the lower midbrain increases brown fat and body temperatures in anesthetized rats. *Brain Res*, 716, 171-9 (1996)
145. Zaretsky, D. V., M. V. Zaretskaia & J. A. DiMicco: Stimulation and blockade of GABAA receptors in the raphe pallidus: effects on body temperature, heart rate, and blood pressure in conscious rats. *Am J Physiol Regul Integr Comp Physiol*, 285, R110-6 (2003)
146. Morrison, S. F.: Raphe pallidus neurons mediate prostaglandin E2-evoked increases in brown adipose tissue thermogenesis. *Neuroscience*, 121, 17-24 (2003)
147. Ootsuka, Y., W. W. Blessing, A. A. Steiner & A. A. Romanovsky: Fever response to intravenous prostaglandin E2 is mediated by the brain but does not require afferent vagal signaling. *Am J Physiol Regul Integr Comp Physiol* (2008)
148. Cerri, M. & S. F. Morrison: Activation of lateral hypothalamic neurons stimulates brown adipose tissue thermogenesis. *Neuroscience*, 135, 627-38 (2005)
149. Cao, W. H. & S. F. Morrison: Brown adipose tissue thermogenesis contributes to fentanyl-evoked hyperthermia. *Am J Physiol Regul Integr Comp Physiol*, 288, R723-32 (2005)
150. Fan, W., S. F. Morrison, W. H. Cao & P. Yu: Thermogenesis activated by central melanocortin signaling is dependent on neurons in the rostral raphe pallidus (rRPa) area. *Brain Res*, 1179, 61-9 (2007)
151. Cerri, M. & S. F. Morrison: Corticotropin releasing factor increases in brown adipose tissue thermogenesis and heart rate through dorsomedial hypothalamus and medullary raphe pallidus. *Neuroscience*, 140, 711-721 (2006)
152. Morrison, S. F.: Activation of 5-HT1A receptors in raphe pallidus inhibits leptin-evoked increases in brown adipose tissue thermogenesis. *Am J Physiol Regul Integr Comp Physiol*, 286, R832-7 (2004)
153. Cao, W. H. & S. F. Morrison: Glutamate receptors in the raphe pallidus mediate brown adipose tissue thermogenesis evoked by activation of dorsomedial hypothalamic neurons. *Neuropharmacology*, 51, 426-37 (2006)
154. Madden, C. J. & S. F. Morrison: Hypoxic activation of arterial chemoreceptors inhibits sympathetic outflow to brown adipose tissue in rats. *Journal of Physiology*, 566, 559-73 (2005)
155. Stornetta, R. L., T. J. McQuiston & P. G. Guyenet: GABAergic and glycinergic presympathetic neurons of rat medulla oblongata identified by retrograde transport of pseudorabies virus and *in situ* hybridization. *Journal of Comparative Neurology*, 479, 257-70 (2004)
156. Deuchars, S. A., K. M. Spyer & M. P. Gilbey: Stimulation within the rostral ventrolateral medulla can evoke monosynaptic GABAergic IPSPs in sympathetic preganglionic neurons *in vitro*. *J Neurophysiol*, 77, 229-35 (1997)
157. Morrison, S. F., W.-H. Cao & C. J. Madden: Dorsomedial hypothalamic and brainstem pathways controlling thermogenesis in brown adipose tissue. *Journal of Thermal Biology* 29, 333-337 (2004)
158. Rathner, J. A. & S. F. Morrison: Rostral ventromedial periaqueductal gray: a source of inhibition of the sympathetic outflow to brown adipose tissue. *Brain Res*, 1077, 99-107 (2006)
159. Dimicco, J. A. & D. V. Zaretsky: The dorsomedial hypothalamus: a new player in thermoregulation. *American*

CNS pathways for thermoregulation

Journal of Physiology - Regulatory Integrative & Comparative Physiology, 292, R47-63 (2007)

160. Sarkar, S., M. V. Zaretskaia, D. V. Zaretsky, M. Moreno & J. A. DiMicco: Stress- and lipopolysaccharide-induced c-fos expression and nNOS in hypothalamic neurons projecting to medullary raphe in rats: a triple immunofluorescent labeling study. *European Journal of Neuroscience*, 26, 2228-38 (2007)

161. Elmquist, J. K., T. E. Scammell, C. D. Jacobson & C. B. Saper: Distribution of Fos-like immunoreactivity in the rat brain following intravenous lipopolysaccharide administration. *Journal of Comparative Neurology*, 371, 85-103 (1996)

162. Zaretskaia, M. V., D. V. Zaretsky & J. A. DiMicco: Role of the dorsomedial hypothalamus in thermogenesis and tachycardia caused by microinjection of prostaglandin E2 into the preoptic area in anesthetized rats. *Neuroscience Letters*, 340, 1-4 (2003)

163. Tanaka, M., M. Tonouchi, T. Hosono, K. Nagashima, M. Yanase-Fujiwara & K. Kanosue: Hypothalamic region facilitating shivering in rats. *Jpn J Physiol*, 51, 625-9 (2001)

164. Hermann, D. M., P. H. Luppi, C. Peyron, P. Hinckel & M. Jouvet: Afferent projections to the rat nuclei raphe magnus, raphe pallidus and reticularis gigantocellularis pars alpha demonstrated by iontophoretic application of cholera toxin (subunit b). *Journal of Chemical Neuroanatomy*, 13, 1-21 (1997)

165. Samuels, B. C., D. V. Zaretsky & J. A. DiMicco: Tachycardia evoked by disinhibition of the dorsomedial hypothalamus in rats is mediated through medullary raphe. *J Physiol*, 538, 941-6 (2002)

166. Yoshida, K., X. Li, G. Cano, M. Lazarus & C. B. Saper: Parallel preoptic pathways for thermoregulation. *J Neurosci*, 29, 11954-64 (2009)

167. Ter Horst, G. J. & P. G. Luiten: Phaseolus vulgaris leucoagglutinin tracing of intrahypothalamic connections of the lateral, ventromedial, dorsomedial and paraventricular hypothalamic nuclei in the rat. *Brain Res Bull*, 18, 191-203 (1987)

168. Zaretskaia, M. V., D. V. Zaretsky, S. Sarkar, A. Shekhar & J. A. DiMicco: Induction of Fos-immunoreactivity in the rat brain following disinhibition of the dorsomedial hypothalamus. *Brain Res* (2008)

169. Bacon, S. J. & A. D. Smith: Preganglionic sympathetic neurones innervating the rat adrenal medulla: immunocytochemical evidence of synaptic input from nerve terminals containing substance P, GABA or 5-hydroxytryptamine. *Journal of the Autonomic Nervous System*, 24, 97-122 (1988)

170. Vera, P. L., V. R. Holets & K. E. Miller: Ultrastructural evidence of synaptic contacts between

substance P-, enkephalin-, and serotonin-immunoreactive terminals and retrogradely labeled sympathetic preganglionic neurons in the rat: a study using a double-peroxidase procedure. *Synapse*, 6, 221-9 (1990)

171. Nakamura, K., S. X. Wu, F. Fujiyama, K. Okamoto, H. Hioki & T. Kaneko: Independent inputs by VGLUT2- and VGLUT3-positive glutamatergic terminals onto rat sympathetic preganglionic neurons. *Neuroreport*, 15, 431-6 (2004)

172. Aicher, S. A., B. Hahn & T. A. Milner: N-methyl-D-aspartate-type glutamate receptors are found in post-synaptic targets of adrenergic terminals in the thoracic spinal cord. *Brain Research*, 856, 1-11 (2000)

173. McNair, C. J., G. J. Baxter, R. Kerr & D. J. Maxwell: Glutamate receptor subunits associated with rat sympathetic preganglionic neurons. *Neuroscience Letters*, 256, 29-32 (1998)

174. Cornea-Hebert, V., M. Riad, C. Wu, S. K. Singh & L. Descarries: Cellular and subcellular distribution of the serotonin 5-HT_{2A} receptor in the central nervous system of adult rat. *J Comp Neurol*, 409, 187-209 (1999)

175. Marlier, L., J. R. Teilhac, C. Cerruti & A. Privat: Autoradiographic mapping of 5-HT₁, 5-HT_{1A}, 5-HT_{1B} and 5-HT₂ receptors in the rat spinal cord. *Brain Research*, 550, 15-23 (1991)

176. Thor, K. B., S. Nickolaus & C. J. Helke: Autoradiographic localization of 5-hydroxytryptamine_{1A}, 5-hydroxytryptamine_{1B} and 5-hydroxytryptamine_{1C/2} binding sites in the rat spinal cord. *Neuroscience*, 55, 235-52 (1993)

177. Maeshima, T., R. Ito, S. Hamada, K. Senzaki, K. Hamaguchi-Hamada, F. Shutoh & N. Okado: The cellular localization of 5-HT_{2A} receptors in the spinal cord and spinal ganglia of the adult rat. *Brain Research*, 797, 118-24 (1998)

178. Doly, S., A. Madeira, J. Fischer, M. J. Brisorgueil, G. Daval, R. Bernard, D. Verge & M. Conrath: The 5-HT_{2A} receptor is widely distributed in the rat spinal cord and mainly localized at the plasma membrane of postsynaptic neurons. *J Comp Neurol*, 472, 496-511 (2004)

179. Brooke, R. E., S. Pyner, P. McLeish, S. Buchan, J. Deuchars & S. A. Deuchars: Spinal cord interneurons labelled transneuronally from the adrenal gland by a GFP-herpes virus construct contain the potassium channel subunit Kv3.1b. *Auton Neurosci*, 98, 45-50 (2002)

180. Deuchars, S. A., C. J. Milligan, R. L. Stornetta & J. Deuchars: GABAergic neurons in the central region of the spinal cord: a novel substrate for sympathetic inhibition. *J Neurosci*, 25, 1063-70 (2005)

181. Madden, C. J. & S. F. Morrison: Serotonin potentiates sympathetic responses evoked by spinal NMDA. *J Physiol*, 577, 525-37 (2006)

CNS pathways for thermoregulation

182. Conte, D., S. A. Deuchars & J. Deuchars: Do serotonin immunoreactive terminals innervate GABAergic neurons in the central autonomic area of the mouse spinal cord. *The FASEB Journal*, 21, A885 (2007)
183. Madden, C. J. & S. F. Morrison: Brown adipose tissue sympathetic nerve activity is potentiated by activation of 5-hydroxytryptamine (5-HT)_{1A}/5-HT₇ receptors in the rat spinal cord. *Neuropharmacology*, 54, 487-96 (2008)
184. Passerin, A. M., L. L. Bellush & W. N. Henley: Activation of bulbospinal serotonergic neurons during cold exposure. *Canadian Journal of Physiology & Pharmacology*, 77, 250-8 (1999)
185. Passerin, A. M. & W. N. Henley: Activation of spinal cord serotonergic neurons accompanies cold-induced sympathoexcitation. *Canadian Journal of Physiology & Pharmacology*, 72, 884-92 (1994)
186. Madden, C. & S. Morrison: Role of spinal serotonin in cold-evoked sympathetic activation of brown adipose tissue. *The FASEB Journal*, 21, A885 (2007)
187. Hodges, M. R., G. J. Tattersall, M. B. Harris, S. D. McEvoy, D. N. Richerson, E. S. Deneris, R. L. Johnson, Z. F. Chen & G. B. Richerson: Defects in breathing and thermoregulation in mice with near-complete absence of central serotonin neurons. *J Neurosci*, 28, 2495-505 (2008)
188. Jansen, A. S., M. W. Wessendorf & A. D. Loewy: Transneuronal labeling of CNS neuropeptide and monoamine neurons after pseudorabies virus injections into the stellate ganglion. *Brain Res*, 683, 1-24 (1995)
189. Ter Horst, G. J., R. W. Hautvast, M. J. De Jongste & J. Korf: Neuroanatomy of cardiac activity-regulating circuitry: a transneuronal retrograde viral labelling study in the rat. *Eur J Neurosci*, 8, 2029-41 (1996)
190. Palmes, E. D. & C. R. Park: The regulation of body temperature during fever. *Arch Environ Health*, 11, 749-59 (1965)
191. Saper, C. B. & C. D. Breder: The neurologic basis of fever. *N Engl J Med*, 330, 1880-6 (1994)
192. Schafer, S. S. & S. Schafer: The role of the primary afference in the generation of a cold shivering tremor. *Exp Brain Res*, 17, 381-93 (1973)
193. Brown, J. W., E. A. Sirlin, A. M. Benoit, J. M. Hoffman & R. A. Darnall: Activation of 5-HT_{1A} receptors in medullary raphe disrupts sleep and decreases shivering during cooling in the conscious piglet. *Am J Physiol Regul Integr Comp Physiol* (2007)
194. Tanaka, M., N. C. Owens, K. Nagashima, K. Kanosue & R. M. McAllen: Reflex activation of rat fusimotor neurons by body surface cooling, and its dependence on the medullary raphe. *J Physiol*, 572, 569-83 (2006)
195. Kerman, I. A., L. W. Enquist, S. J. Watson & B. J. Yates: Brainstem substrates of sympatho-motor circuitry identified using trans-synaptic tracing with pseudorabies virus recombinants. *J Neurosci*, 23, 4657-66 (2003)
196. Nason, M. W., Jr. & P. Mason: Modulation of sympathetic and somatomotor function by the ventromedial medulla. *J Neurophysiol*, 92, 510-22 (2004)
197. Hubschle, T., M. J. McKinley & B. J. Oldfield: Efferent connections of the lamina terminalis, the preoptic area and the insular cortex to submandibular and sublingual gland of the rat traced with pseudorabies virus. *Brain Res*, 806, 219-31 (1998)
198. Jansen, A. S., G. J. Ter Horst, T. C. Mettenleiter & A. D. Loewy: CNS cell groups projecting to the submandibular parasympathetic preganglionic neurons in the rat: a retrograde transneuronal viral cell body labeling study. *Brain Res*, 572, 253-60 (1992)
199. Whyte, D. G. & A. K. Johnson: Lesions of the anteroventral third ventricle region (AV3V) disrupt cardiovascular responses to an elevation in core temperature. *Am J Physiol Regul Integr Comp Physiol*, 288, R1783-90 (2005)
200. Shibasaki, M., K. Aoki, K. Morimoto, J. M. Johnson & A. Takamata: Plasma hyperosmolality elevates the internal temperature threshold for active thermoregulatory vasodilation during heat stress in humans. *Am J Physiol Regul Integr Comp Physiol*, 297, R1706-12 (2009)
201. Baker, M. A. & P. A. Doris: Control of evaporative heat loss during changes in plasma osmolality in the cat. *J Physiol*, 328, 535-45 (1982)
202. Takamata, A., G. W. Mack, C. M. Gillen, A. C. Jozsi & E. R. Nadel: Osmoregulatory modulation of thermal sweating in humans: reflex effects of drinking. *Am J Physiol*, 268, R414-22 (1995)
203. Turlejska, E. & M. A. Baker: Elevated CSF osmolality inhibits thermoregulatory heat loss responses. *Am J Physiol*, 251, R749-54 (1986)
204. Morrison, S. F., S. Ramamurthy & J. B. Young: Reduced rearing temperature augments responses in sympathetic outflow to brown adipose tissue. *Journal of Neuroscience*, 20, 9264-71 (2000)
205. Owens, N. C., Y. Ootsuka, K. Kanosue & R. M. McAllen: Thermoregulatory control of sympathetic fibres supplying the rat's tail. *J Physiol*, 543, 849-58 (2002)

Abbreviations: 5-HT: serotonin, BAT: brown adipose tissue, CVC: cutaneous vasoconstriction, DMH: dorsomedial hypothalamus, IML: intermediolateral nucleus, LPB: lateral parabrachial nucleus, LPBd: dorsal subnucleus of the LPB, LPBe: external lateral subnucleus of the LPB, LPO: lateral preoptic area, LPS: lipopolysaccharide, MnPO: median preoptic nucleus, MPO:

CNS pathways for thermoregulation

medial preoptic area, NMDA: N-methyl D-aspartate, PAG: periaqueductal gray, PG: prostaglandin, POA: preoptic area, PPy: parapyramidal area, rRPa: rostral raphe pallidus, RVLM: rostral ventrolateral medulla, SNA: sympathetic nerve activity, SPN: sympathetic preganglionic neurons, TRP: transient receptor potential, VGLUT3: vesicular glutamate transporter 3

Key Words: Temperature Regulation, Physiology, Mammal, Homeostasis, Brown Adipose Tissue, Cutaneous Vasoconstriction, Shivering, Thermogenesis, Review

Send correspondence to: Shaun Morrison, ONPRC/OHSU, 505 NW 185th Avenue, Beaverton, OR 97006, Tel: 503-614-3770, Fax: 503-418-2801, E-mail: morrisos@ohsu.edu

<http://www.bioscience.org/current/vol16.htm>