



Quantifying the uncertainty of eddy covariance fluxes due to the use of different software packages and combinations of processing steps in two contrasting ecosystems

Ivan Mammarella, Olli Peltola, Annika Nordbo, Leena Järvi, and Üllar Rannik

Department of Physics, University of Helsinki, P.O. Box 48, 00014 Helsinki, Finland

Correspondence to: Ivan Mammarella (ivan.mammarella@helsinki.fi)

Received: 23 October 2015 – Published in Atmos. Meas. Tech. Discuss.: 18 January 2016

Revised: 5 August 2016 – Accepted: 22 August 2016 – Published: 6 October 2016

Abstract. We have carried out an inter-comparison between EddyUH and EddyPro[®], two public software packages for post-field processing of eddy covariance data. Datasets including carbon dioxide, methane and water vapour fluxes measured over 2 months at a wetland in southern Finland and carbon dioxide and water vapour fluxes measured over 3 months at an urban site in Helsinki were processed and analysed. The purpose was to estimate the flux uncertainty due to the use of different software packages and to evaluate the most critical processing steps, determining the largest deviations in the calculated fluxes. Turbulent fluxes calculated with a reference combination of processing steps were in good agreement, the systematic difference between the two software packages being up to 2.0 and 6.7 % for half-hour and cumulative sum values, respectively. The raw data preparation and processing steps were consistent between the software packages, and most of the deviations in the estimated fluxes were due to the flux corrections. Among the different calculation procedures analysed, the spectral correction had the biggest impact for closed-path latent heat fluxes, reaching a nocturnal median value of 15 % at the wetland site. We found up to a 43 % median value of deviation (with respect to the run with all corrections included) if the closed-path carbon dioxide flux is calculated without the dilution correction, while the methane fluxes were up to 10 % lower without both dilution and spectroscopic corrections. The Webb–Pearman–Leuning (WPL) and spectroscopic corrections were the most critical steps for open-path systems. However, we found also large spectral correction factors for the open-path methane fluxes, due to the sensor separation effect.

1 Introduction

The eddy covariance (EC) technique is the most direct and defensible way to measure and calculate vertical turbulent fluxes of momentum, energy and gases between the atmosphere and biosphere. During the last 3 decades, the number of long-term EC stations all over the world has increased exponentially, covering a wide range of different ecosystem types (FLUXNET, www.fluxdata.org). EC is a technique analysing high-frequency wind and scalar atmospheric data series (often called “raw data”), usually saved in hard drive devices for post-field processing and final estimations of turbulent flux values. During the past years several attempts have been made to standardise the processing methodology, at least for carbon dioxide (CO₂) and sensible and latent heat (LE) fluxes (Aubinet et al., 2000, 2012; Lee et al., 2004). However, the harmonisation of data processing is quite difficult, since most of the required steps and corrections are site-specific and instrument-specific (gas analyser and sonic anemometer). Nowadays, new and better instrumentation is available for measuring turbulent fluxes of energy and matter using the EC technique. Recent studies have compared commercially available gas analysers, focusing on precision, stability and systematic and random errors both for CO₂ fluxes (Burba et al., 2008; Ibrom et al., 2007a; Järvi et al., 2009) and methane (CH₄) and nitrous oxide (N₂O) fluxes (Detto et al., 2011; Peltola et al., 2013, 2014; Rannik et al., 2015). However, only a few studies have reported an inter-comparison between EC software packages, and all focusing only on energy and CO₂ fluxes (Fratini and Mauder, 2014; Mauder et al., 2007, 2008). For example, Mauder et al. (2008) concluded that the data preparation, the coordinate rotation of

sonic anemometer wind components and the different approaches for high-frequency spectral correction are critical processing steps, giving differences up to 10 % in their study. Fratini and Mauder (2014) compared TK3 and EddyPro[®] software packages, achieving a satisfying agreement in calculated fluxes and related quality flags only after tuning the software processing steps and corrections to be similar. In fact, systematic differences in EC flux estimates strongly depend on the selection, application and order of processing steps, and the correct application, order and sometimes relevance and consequences of several processing steps are still topics under discussion (Aubinet et al., 2012; Mauder and Foken, 2006). In addition, the relevance of some processing steps and corrections depends not only on the system set-up, but also on meteorological conditions and ecosystem types (Mammarella et al., 2015; Nordbo et al., 2012). As a result, the EC processing software packages available to the community feature different implementations: some steps may be implemented using different methods (Mauder et al., 2007), while some operations and eventually further corrections suggested by recent findings are not supported by some of the software packages. This is particularly relevant for gases like CH₄ and N₂O, for which the deployment of the EC system with easy-to-use fast response analysers have become popular only during the last decade. Therefore, neither data processing approaches have yet been standardised nor software inter-comparison studies have been published for these gas fluxes.

In this study, we have performed an inter-comparison between EddyUH and EddyPro, two public and commonly used software packages for EC data processing and calculation. The aims are to estimate the flux uncertainty due to the use of different software packages for half-hour as well as for cumulative sums, and to assess the most critical processing steps, determining the largest deviations in the calculated fluxes. We focus not only on LE and CO₂ fluxes, as it has been done in previous studies, but also on CH₄ fluxes.

2 Material and methods

2.1 Site description and measurements

The software inter-comparison was performed using datasets from two field sites in southern Finland. The first dataset was collected at the Siikaneva fen site (61°49.961' N, 24°11.567' E) during the CH₄ inter-comparison field campaign (Peltola et al. 2013). The EC data used in this study were measured during 1 May–30 June 2010 with a 3-D sonic anemometer (USA-1, Metek GmbH), two closed-path gas analysers (LI-7000, LI-COR Biosciences; G1301-f, Picarro Inc.) and one open-path gas analyser (LI-7700, LI-COR Biosciences). LI-7700 was an early prototype version of the later commercialised LI-7700. LI-7000 measured CO₂ and water vapour (H₂O) and G1301-f measured CH₄ and H₂O molar

fractions, whereas LI-7700 measured CH₄ molar concentrations. LI-7000 and G1301-f used a shared heated sampling line that was approximately 16.8 m long (ID: 10 mm, flow rate: 24 L min⁻¹). The sonic anemometer was situated 2.75 m above peat surface and the open-path LI-7700 directly below it, causing a 45 cm vertical separation between the sensors. Further details about the site and measurements can be found in Peltola et al. (2013).

The second dataset was collected between 1 July and 30 September 2010 at the Erottaja site located in Helsinki city centre (60°09.912' N, 24°56.723' E). The measurements represent densely built-up urban area, with only 5 % of the surface being covered with vegetation. The measurements are carried out in a 3.8 m high mast located on top of a 38 m high fire station tower, resulting in a total height of 41.8 m. This is a sufficient height for the EC measurements as the mean building height in the surroundings of the tower is 21.7 m. The measurement set-up consisted of an ultrasonic anemometer (USA-1, Metek GmbH) to measure the wind components and open- and closed-path infrared gas analysers (LI-7500 and LI-7200, LI-COR Biosciences) for the CO₂ and H₂O fluctuations. Details of the measurement set-up can be found in Nordbo et al. (2013).

2.2 Turbulent flux calculation

The turbulent fluxes of CO₂ (F_{CO_2} , $\mu\text{mol m}^{-2} \text{s}^{-1}$) and CH₄ (F_{CH_4} , $\text{nmol m}^{-2} \text{s}^{-1}$) and sensible (H , W m^{-2}) and latent (LE , W m^{-2}) heat are calculated from the covariances between a respective scalar and vertical wind velocity (w) as

$$F_{\text{CO}_2} = \frac{\rho_d}{M_a} \overline{w' \chi'_{\text{CO}_2}}, \quad (1)$$

$$F_{\text{CH}_4} = \frac{\rho_d}{M_a} \overline{w' \chi'_{\text{CH}_4}}, \quad (2)$$

$$H = \rho_d c_p \overline{w' T'}, \quad (3)$$

$$LE = \rho_d L_v \frac{M_w}{M_a} \overline{w' \chi'_{\text{H}_2\text{O}}}, \quad (4)$$

where ρ_d is the dry air density (kg m^{-3}), c_p the specific heat capacity of dry air ($\text{J kg}^{-1} \text{K}^{-1}$), L_v the latent heat of vapourisation for water (J kg^{-1}), T the temperature (K) and M_a and M_w the molar masses of dry air and water, respectively. The terms $\overline{w' T'}$, $\overline{w' \chi'_{\text{CO}_2}}$, $\overline{w' \chi'_{\text{CH}_4}}$ and $\overline{w' \chi'_{\text{H}_2\text{O}}}$ are the covariances between w and T , dry mole fractions of CO₂, CH₄ and H₂O, respectively. Overbars and primes represent temporal averaging and fluctuations, respectively.

2.3 Set-up of software runs

The results presented in this study are based on EddyUH version 1.7 and EddyPro version 5.2.1. EddyUH is a software package for EC raw data processing, developed by the Micrometeorology Research Group at the Department of Physics, University of Helsinki (Finland). It is freely downloadable from https://www.atm.helsinki.fi/Eddy_

Covariance/EddyUHsoftware.php, and it was originally developed in order to harmonise data processing among several EC sites operated by the group. Later, the software package was made publicly available. The EddyUH processing flow chart (Fig. A1) is introduced in Appendix A, while a brief description of post-field data processing operations and methods, as presented in Table A1, is given in Appendices B and C.

The EddyUH software was compared against EddyPro, perhaps the most used software in the EC flux community, developed by LI-COR Biosciences Inc. (Lincoln, NE, USA). It is freely available and well documented (www.licor.com/eddypro).

The eddy covariance datasets were processed using the reference combination of processing steps (Fig. 1) and available methods implemented in EddyUH and EddyPro (Table 1). The applied methods were the same for most of the steps. However, some differences between software packages were present. In EddyUH the raw data despiking was done by the difference limit method (Appendix B), while in EddyPro the Vickers and Mahrt (1997) method was used. Different experimental methods were applied for spectral correction, e.g. according to Mammarella et al. (2009) in EddyUH and Fratini et al. (2012) in EddyPro. Moreover, additional correction for water vapour cross-sensitivity (henceforth point-by-point spectroscopic correction) of closed-path CH₄ was done in EddyUH according to Rella (2010). The same correction is not available in EddyPro. Finally, we performed four different combinations of processing steps and compared them with the reference combination in order to evaluate the effects of different calculation steps on the final flux estimates. The alternative runs were set up by modifying one step of the reference combination at a time. The first and second runs were done by excluding the spectral correction and applying the theoretical approach (instead of experimental one used in the reference combination), respectively. The Webb–Pearman–Leuning (WPL) (Webb et al., 1980, henceforth also called dilution correction in the case of closed-path sensors) and spectroscopic corrections were omitted in the third run, and finally in the final run a constant value for the time lag was used.

Flux data were quality-screened prior to analysis. CH₄ flux data were removed if the CH₄ mean mole fraction was above 5 or below 1.7 ppm. Additionally, LI-7700 fluxes were discarded if the received signal strength indicator (RSSI) was below 15. All the Siikaneva flux data were discarded if the second coordinate rotation angle (used to set $\bar{w} = 0$) was above 10°. Wind direction (90–180° omitted) was used to omit periods when the measurement system at the Erottaja site was in the wake of the building. In addition, periods when there were known problems with the measurement set-up at the Erottaja site were discarded. Plausibility limits were also used, since if the flux values were outside certain predefined limits they were thought to be erroneous. For Siikaneva data these limits were -50 and $160 \text{ nmol m}^{-2} \text{ s}^{-1}$ for F_{CH_4} ,

-30 and 600 W m^{-2} for LE and -20 and $20 \mu\text{mol m}^{-2} \text{ s}^{-1}$ for F_{CO_2} . For Erottaja the following limits were used: -30 and 500 W m^{-2} for LE and -10 and $60 \mu\text{mol m}^{-2} \text{ s}^{-1}$ for F_{CO_2} . Finally, flux data were discarded if the corresponding quality flags, as determined by EddyUH and EddyPro, were above 5 based on the Foken et al. (2004) flagging policy. The data coverage obtained after data screening is given in Table 2.

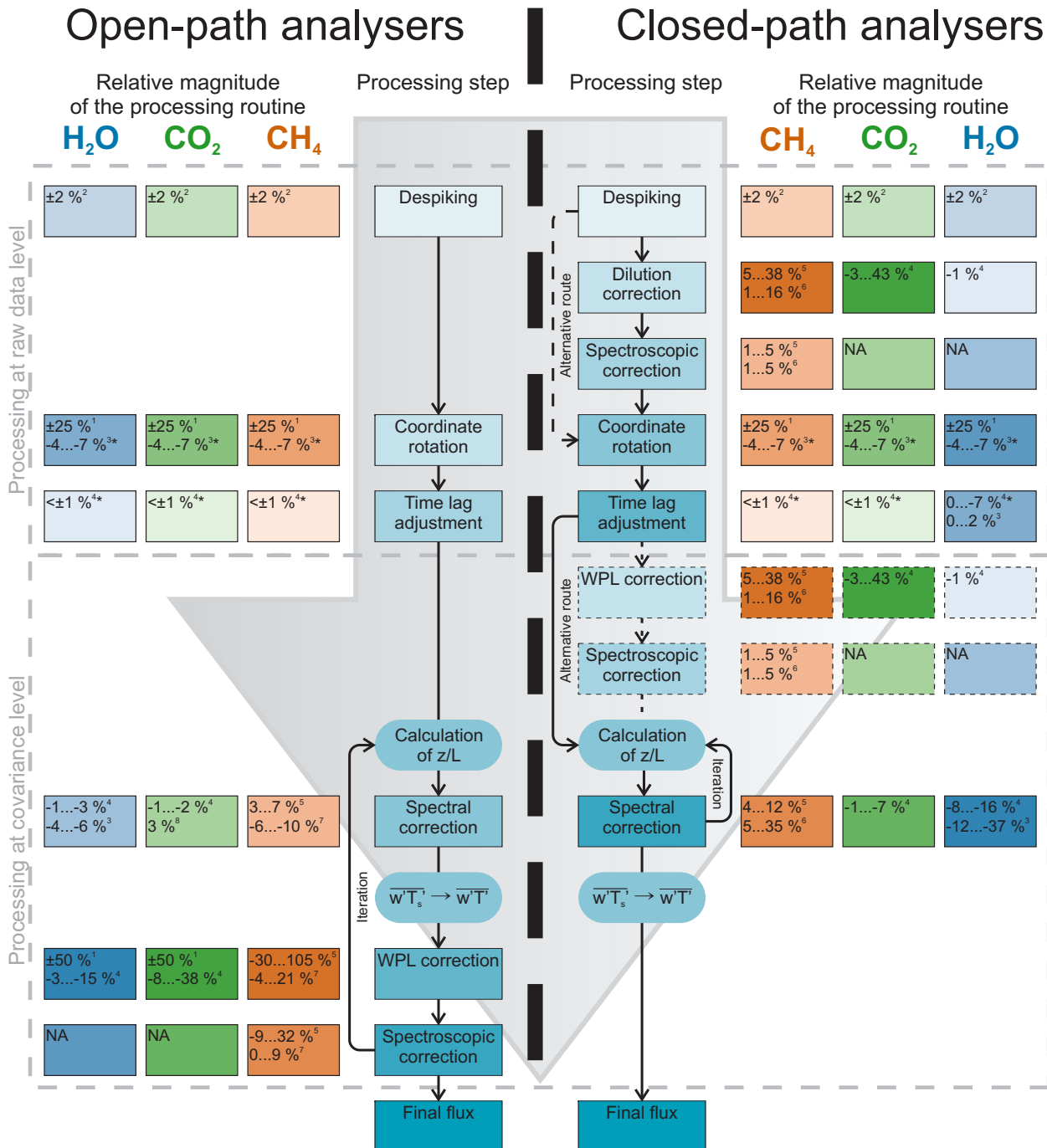
3 Results

3.1 Flux comparison between software packages

Fluxes measured by the same system were analysed and compared as estimated by the two software packages in the reference run. In terms of regression statistics, a very good agreement between EddyUH and EddyPro was obtained for LE and F_{CO_2} measured by LI-7000 (Fig. 2d and e), LE and F_{CH_4} by G1301-f at Siikaneva (Fig. 2c and a) and F_{CO_2} by LI-7200 at Erottaja (Fig. 2i). For LI-7500 LE and F_{CO_2} no significant systematic differences between the software packages were found (Fig. 2f and h) even though the data show more scatter around the 1 : 1 line ($r^2 = 0.91$, $\text{RMSE} = 1.29 \text{ W m}^{-2}$ for LE and $r^2 = 0.98$, $\text{RMSE} = 0.12 \mu\text{mol m}^{-2} \text{ s}^{-1}$ for F_{CO_2}) than the other analysers. Instead, a systematic difference was found for LE measured by the LI-7200 analyser in Erottaja, the EddyPro fluxes being 2 % higher than those calculated by EddyUH (Fig. 2g).

Finally, good agreement resulted from the LI-7700 F_{CH_4} , the slope being equal to unity ($r^2 = 0.98$ and $\text{RMSE} = 0.88 \text{ nmol m}^{-2} \text{ s}^{-1}$; Fig. 2b). However, the sensor separation correction in EddyPro (Horst and Lenschow, 2009) caused relatively large scatter between LI-7700 fluxes, and if the correction was omitted, visually the scatter between the two software packages was reduced, although regression statistics were slightly worse ($y = 0.94x + 0.51$, $\text{RMSE} = 1.21 \text{ nmol m}^{-2} \text{ s}^{-1}$, $r^2 = 0.99$) (figure not shown). Applicability of the sensor separation correction for this particular dataset is discussed in Sect. 4.2.

In order to further evaluate the discrepancies between the two software packages, diel patterns of flux ratio (left side in Fig. 3) and bias (right side in Fig. 3) were plotted for each flux at different processing levels. In general, the uncorrected (raw) fluxes do not show significant deviations from unity (left side of Fig. 3) or from the zero line (right side of Fig. 3), which suggests that the preparations done at the raw data level (despiking, coordinate rotation, time lag compensation) did not make a significant systematic difference to the fluxes. For LE calculated from LI-7500 data, the WPL correction tends to be slightly larger in EddyUH than in EddyPro, meaning that it increases the daytime positive fluxes more (cf. WPL curve in Fig. 3r). The daytime WPL correction in EddyUH is approximately 2 W m^{-2} larger than in EddyPro, which corresponds to a daytime relative differ-



¹Burba (2013), ²Moncrieff et al. (2004), ³Nordbo et al. (2012), ⁴This study, ⁵Peltola et al. (2013), ⁶Peltola et al. (2014), ⁷Iwata et al. (2014), ⁸Järvi et al. (2009)

* Comparison between methods

$$\text{Relative magnitude definition: } \frac{F_{\text{corr}} - F_{\text{raw}}}{F_{\text{raw}}} \quad \frac{F_{\text{corr}} - F_{\text{raw}}}{|F_{\text{raw}}|} \quad \frac{F_{\text{run}} - F_{\text{ref}}}{F_{\text{ref}}}$$

Figure 1. EC data processing scheme for open- and closed-path gas analyser data. Relative magnitude of each processing step is also reported, according to this and other studies. Note the different ways with different sign conventions (see footnotes) in which the relative magnitudes are calculated in different studies, where F_{raw} is the uncorrected flux, F_{run} the flux without the corresponding correction, F_{corr} the flux after the corresponding correction and F_{ref} the fully corrected flux. The reported percentages demonstrate the typical impact that the correction methods have on the fluxes and should be considered only as indicative, since they depend on measurement site and set-up characteristics.

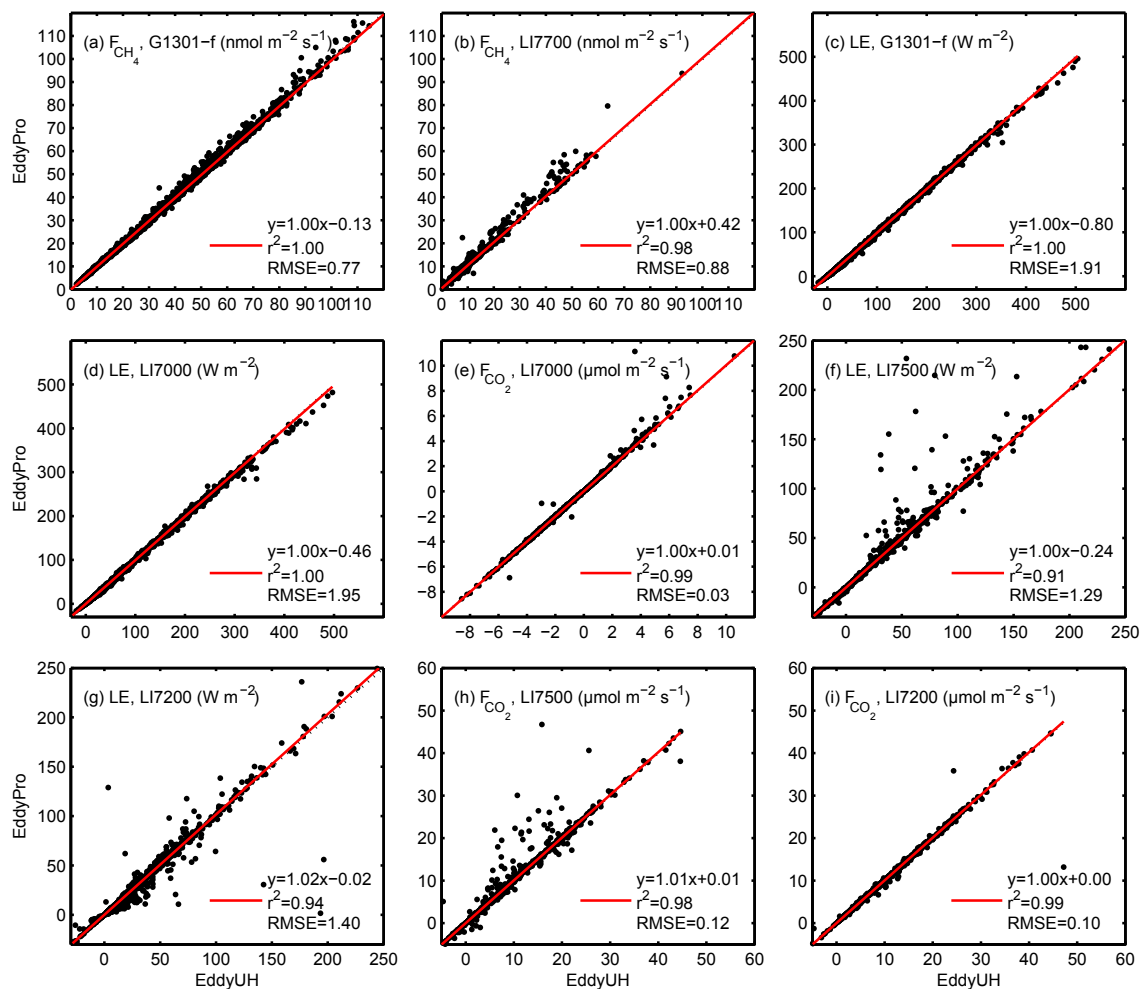


Figure 2. Comparison of the reference run fluxes estimated by EddyUH and EddyPro. CH_4 flux measured by G1301-f (a) and LI-7700 (b), LE measured by G1301-f (c) and LI-7000 (d), CO_2 flux measured by LI-7000 (e), LI-7500 (h) and LI-7200 (i) and LE measured by LI-7500 (f) and LI-7200 (g). Each dot represents a 30 min data value. Dashed lines indicate the 1 : 1 line, and red solid lines the linear regression to the data. Fluxes are measured at the Siikaneva fen site (a–e) and at the Erottaja urban site (f–i).

ence of 4 % (Fig. 3q). The reason was found to be a difference in one of the inputs of the WPL temperature fluctuation term (T -term), specifically in the water vapour density (ρ_w). In fact, while EddyUH uses the one from LI-7500, EddyPro calculates ρ_w from meteorological relative humidity (RH) data. For closed-path analysers or other open-path fluxes there is no difference in the WPL correction, and the uncorrected and WPL corrected curves follow similar pattern. The biggest differences between the software packages were related to the spectral corrections. For closed-path LI-7000 and G1301-f the fully corrected (e.g. WPL + SC in Fig. 3) LE fluxes were approximately 7 % larger at nighttime in EddyUH than in EddyPro (Fig. 3m and k). However, during these periods the absolute difference was still below 1 W m^{-2} , since the night-time LE is small. This difference is due to different RH dependence of low-pass filter time constant found between the two softwares (see discus-

sion in Sect. 4.1). For LI-7700 F_{CH_4} the relative difference between the software packages was on average 12 % during the night, EddyPro fluxes being larger (Fig. 3c), which corresponds to an absolute difference of $1\text{--}4 \text{ nmol m}^{-2} \text{ s}^{-1}$ (Fig. 3d). This difference was related to the sensor separation correction, and the difference was smaller (4–10 % or $0.5\text{--}1.5 \text{ nmol m}^{-2} \text{ s}^{-1}$; EddyUH fluxes were larger) if the correction was not done in EddyPro (see the corresponding discussion in Sect. 4.2).

3.2 Flux comparison between instruments

Fluxes measured with different gas analysers are compared as estimated using the reference combination in EddyUH and EddyPro (Fig. 4). At Erottaja, very good agreement was found between F_{CO_2} measured by LI-7200 and LI-7500 (Fig. 4e and f), and similar results

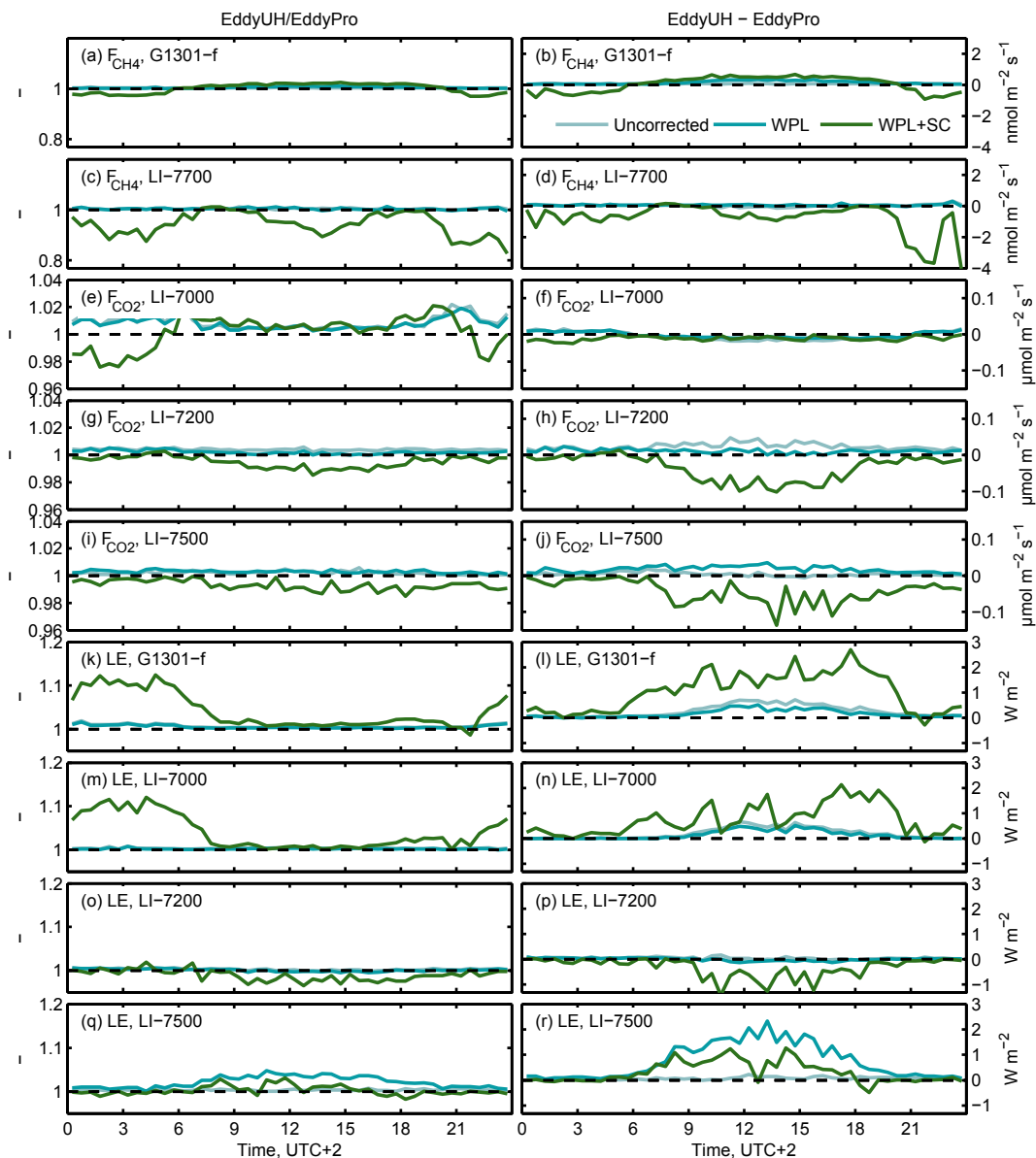


Figure 3. Median diurnal variation of flux ratio (left side) and bias (right side) for the studied instruments and variables between the two software. Light blue shows the uncorrected fluxes after despiking, coordinate rotation, detrending and time lag compensation; blue the WPL corrected fluxes (for G1301-f and LI-7700 F_{CH_4} this includes also spectroscopic correction); and green the WPL plus spectral corrections (WPL + SC). The WPL + SC curves represent data from the reference run, i.e. data that are fully corrected.

were obtained by using EddyUH (slope = 0.99, $r^2 = 0.92$, RMSE = $1.25 \mu\text{mol m}^{-2} \text{s}^{-1}$) and EddyPro (slope = 0.98, $r^2 = 0.90$, RMSE = $1.32 \mu\text{mol m}^{-2} \text{s}^{-1}$). LE measured by the same gas analysers show slightly weaker correspondence, the slope and RMSE being 1.02 and 8.15 W m^{-2} for EddyUH and 1.06 and 8.36 W m^{-2} for the EddyPro run, respectively (Fig. 4g and h). The small difference in LE between the two software packages is likely due to the spectral corrections (see below). Overall, the results are in agreement with Nordbo et al. (2013), who also found a better agreement between F_{CO_2} than LE measurements at

the same site. A very good correspondence (slope = 0.97, $r^2 = 1.00$, RMSE = 1.94 W m^{-2}) was found between LE measured by LI-7000 and G1301 systems for the EddyUH reference run at the Siikaneva site (Fig. 4c). For EddyPro similar statistics were obtained (slope = 0.96, $r^2 = 1.00$, RMSE = 2.56 W m^{-2} in Fig. 4d). By using the reference combination in the EddyUH run, a relative good agreement was also obtained between F_{CH_4} values measured by G1301 and LI-7700 (Fig. 4a). The regression statistics (slope = 1.09, $r^2 = 0.84$, RMSE = $2.64 \text{ nmol m}^{-2} \text{s}^{-1}$) are similar to the ones reported in Peltola et al. (2013). A 16 % difference be-

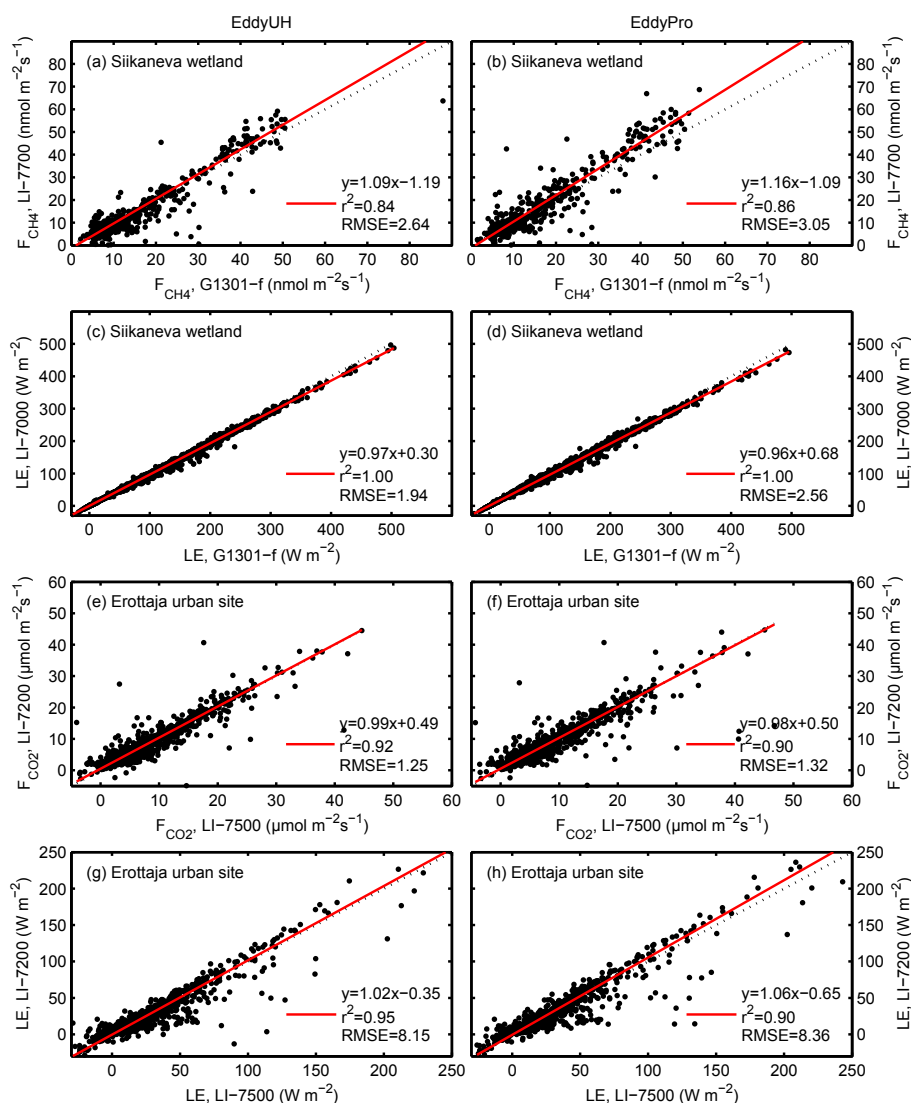


Figure 4. Scatter plots of F_{CH_4} measured by G1301-f and LI-7700 (a, b), LE measured by G1301-f and LI-7000 (c, d), F_{CO_2} measured by LI-7500 and LI-7200 (e, f) and LE measured by LI-7500 and LI-7200 (g, h). Subplots in the left column show fluxes calculated with EddyUH, and those in the right column fluxes calculated with EddyPro. Each dot represents a 30 min data value. Dashed lines indicate the 1 : 1 line, and red solid lines the linear regression to the data.

tween the two F_{CH_4} values was found in the EddyPro run (Fig. 4b), because of larger spectral correction estimates for the open-path gas analyser (see Sect. 4.2).

3.3 Effects of different flux processing combinations

The impact of calculation steps on the final flux estimates in EddyUH and EddyPro is presented as deviation (in %) from the reference run for Siikaneva (Fig. 5) and Erottaja (Fig. 6) datasets. For closed-path systems in Siikaneva, the run without spectral correction had the largest effect on LE, being (in the EddyUH run) 14 and 9 % lower for G1301-f, and 16 and 12 % lower for the LI-7000 system, during night-time and daytime, respectively (Fig. 5c and d). When compared to

the EddyUH run, slightly smaller deviations (10 and 8 % for G1301-f and 12 and 11 % for the LI-7000) were found in the EddyPro run, but the trend in the deviations was consistent between the software packages. A similar range of deviations was found in Erottaja LE measured by LI-7200 (Fig. 6b). However, performing the theoretical spectral correction on the Siikaneva LE had a minimal effect (Fig. 5c and d), while the deviations found in LE measured by LI-7200 at Erottaja ranged between 6 and 3 % (Fig. 6b). The use of a constant time lag produces a small effect on LE, except during night-time when the higher RH increases the sorption of H_2O in the sampling line walls (Nordbo et al., 2014), and H_2O time lag becomes larger than its nominal value. At Siikaneva the theoretical spectral correction produces up to 7 % higher F_{CO_2}

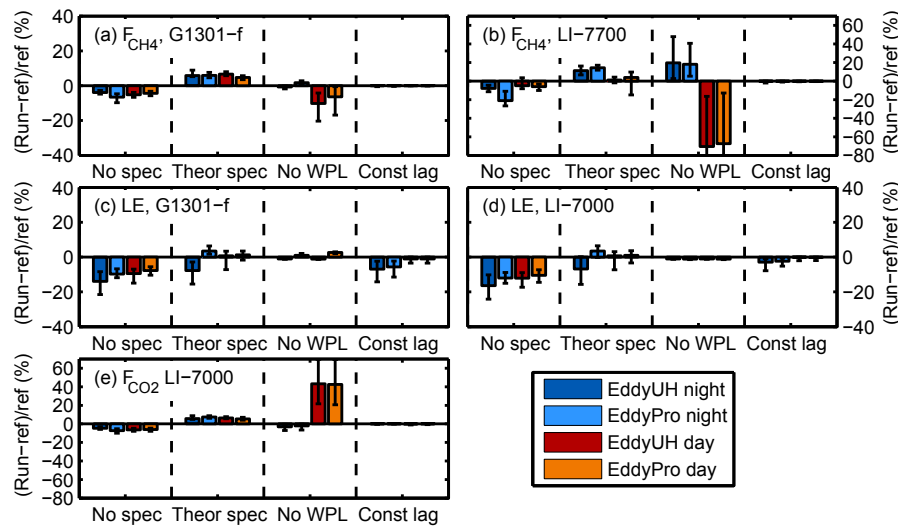


Figure 5. Effect of different calculation procedure of the estimated flux at the Siikaneva site, presented as deviation (in %) from the reference run (ref). Deviation is defined as $(\text{run}-\text{ref})/\text{ref}$, where run refers to the run performed with no spectral correction (no spec), theoretical spectral correction (theor spec), no WPL (or dilution) and spectroscopic correction (no WPL) and using a constant time lag (const lag). Bars indicate the median values, and error bars denote 25th and 75th percentiles. Note the different scale on y axis in the subplots (b, e) compared to (a, c, d).

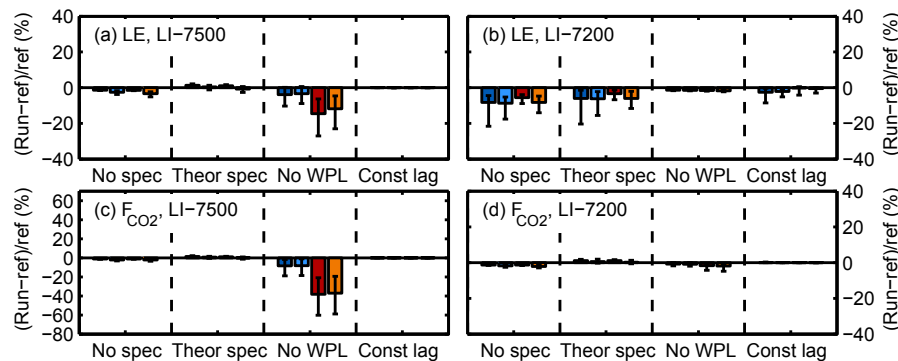


Figure 6. As in Fig. 5, but for Erottaja. Note the different scale on y axis in the subplots (c) compared to (a, b, d).

and F_{CH_4} measured by LI-7000 and G1301-f systems, respectively, with respect to the experimental spectral correction (used in the reference run). If the LI-7000 F_{CO_2} is calculated without performing the dilution correction (e.g. using the wet mole fraction), we obtained 43 % higher daytime CO_2 uptake with both software packages, and about 3 % lower positive fluxes during night-time. The same correction also has a relevant impact on daytime F_{CH_4} measured by G1301-f, resulting in 10 and 6 % deviations in EddyUH and EddyPro, respectively.

For open-path systems the critical step is represented by the WPL (and spectroscopic) correction. In Erottaja, the net CO_2 emission calculated from LI-7500 data without WPL correction is underestimated by 38 and 37 % during daytime in EddyUH and EddyPro, respectively (Fig. 6c). Instead, the nocturnal F_{CO_2} is 8 % smaller than from the reference run.

Although the effect of no WPL is lower on LE, the calculated deviations are still relevant, being 15 and 12 % during daytime (in EddyUH and EddyPro, respectively), and 4 and 3 % during night-time. Finally, in Siikaneva the LI-7700 F_{CH_4} calculated in EddyUH without the combined WPL and spectroscopic correction shows -71 and 20 % deviations from the reference run during daytime and night-time. The same median values estimated in EddyPro are -67 and 18 % (Fig. 5b). In addition, it can be seen from the same figure that the deviation of nocturnal F_{CH_4} calculated without spectral correction (no spec run) in EddyPro is larger (-21 %) than the one obtained in EddyUH (-8 %). This is consistent with the fact that EddyPro gives larger nocturnal spectral correction factors with respect to EddyUH (see Sect. 4.1 and Fig. 3).

Table 1. Software set-ups for the reference combination.

Processing steps/software	EddyUH	EddyPro
Despiking	Difference limit (Appendix B)	Vickers and Mahrt (1997)
Point-by-point conversion to dry mole fraction for closed-path (dilution correction)	Yes	Yes
Point-by-point spectroscopic correction for closed-path	Yes, according to Rella (2010)	No
Calculation of turbulent fluctuations	Block averaging	Block averaging
Coordinate rotation	2-D ($\bar{v} = \bar{w} = 0$)	2-D ($\bar{v} = \bar{w} = 0$)
Crosswind correction	Yes, according to Liu et al. (2001)	Yes, according to Liu et al. (2001)
Time lag estimation and adjustment	Max cross-covariance with time lag optimisation	Max cross-covariance with time lag optimisation
Spectral correction	Yes, according to Mammarella et al. (2009)	Yes, according to Fratini et al. (2012)
WPL correction to 30 min fluxes (for open-path)	Yes, according to Webb et al. (1980)	Yes, according to Webb et al. (1980)
Spectroscopic correction to 30 min fluxes (for open-path)	For LI-7700 F_{CH_4} according to McDermitt et al. (2011)	For LI-7700 F_{CH_4} according to McDermitt et al. (2011)

3.4 Differences between cumulative fluxes

Cumulative sums of non-gap-filled flux time series are mostly within $\pm 2\%$, which suggests that there is no significant systematic bias between the two software packages (Table 2). Biggest relative differences were in LI-7700 F_{CH_4} and LI-7500 H_2O flux cumulative sums, -6.7 and -5.3% , respectively, meaning that the cumulative values estimated with EddyPro were somewhat larger than with EddyUH. For LI-7700 F_{CH_4} , if the sensor separation correction was omitted, the relative difference was 1.0% (EddyUH fluxes larger). The smallest relative difference was obtained for G1301-f cumulative F_{CH_4} , 0.03% .

The absolute differences between the cumulative CH_4 fluxes at Siikaneva fen during the period May–June 2010 were $-0.02 \text{ g}(\text{CH}_4) \text{ m}^{-2}$ (LI-7700, EddyPro larger) and less than $0.01 \text{ g}(\text{CH}_4) \text{ m}^{-2}$ (G1301-f) (Table 2). The difference between cumulative CO_2 fluxes was $-4 \text{ g}(\text{CO}_2) \text{ m}^{-2}$; EddyUH was showing slightly higher CO_2 uptake. This originated from the fact that EddyPro estimated approximately $1\text{--}3\%$ higher respiration at night and EddyUH calculated $< 1\%$ higher uptake during daytime (cf. Fig. 3e). These differences were caused by the spectral corrections and they inflicted the observed deviation between the cumulative LI-7000 CO_2 fluxes. At the Erottaja urban site during July–September 2010 EddyUH showed slightly lower cumulative CO_2 emission ($-2 \text{ g}(\text{CO}_2) \text{ m}^{-2}$) for LI-7200, whereas for LI-7500 the difference was larger ($-27 \text{ g}(\text{CO}_2) \text{ m}^{-2}$). Similarly, as in the case of LI-7000 CO_2 fluxes, here the difference observed between LI-7500 cumulative F_{CO_2} was also

likely caused by the spectral corrections (cf. Fig. 3i). The cumulative H_2O fluxes were within 2 mm. However, the data coverage should be considered when evaluating the significance of these absolute differences. The data coverage of the Siikaneva measurements was between 73% (CH_4 , G1301-f) and 21% (CH_4 , LI-7700). At the Erottaja site lower data coverage was obtained (between 37% (CO_2 , LI-7500) and 29% (H_2O , LI-7500 and LI-7200)).

4 Discussion

We have performed an inter-comparison between EddyUH and EddyPro, two public software packages for EC flux calculation. Both software packages feature up-to-date methods for EC raw data processing steps and corrections. Flux data as estimated by the reference combinations (Table 1) were in good agreement. In general, there were not significant systematic differences in the uncorrected fluxes calculated by EddyUH and EddyPro (Fig. 3). This suggests that an optimal choice for the raw data preparation and processing schemes leads systematic biases to be avoided in the fluxes between the two software packages. The most significant differences between the software packages only occurred after the flux corrections, and the impacts of these steps are further discussed below for fluxes measured by closed- and open-path systems.

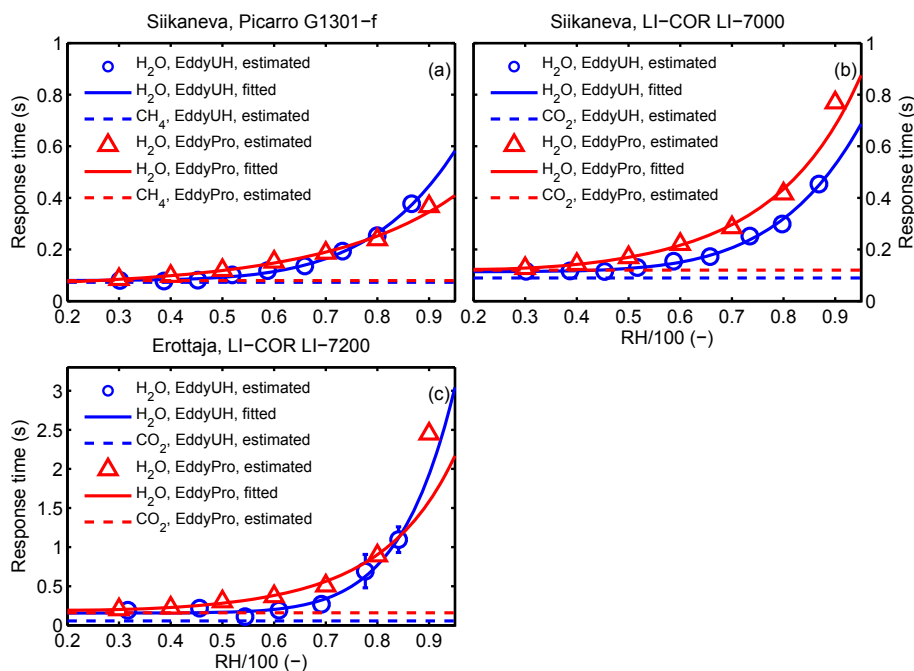


Figure 7. Relative humidity (RH) dependence of low-pass filter time constant as estimated with the two software packages. Note the different scale on y axis in the subplot (c).

4.1 Critical steps and recommendations for closed-path systems

EC measurements from three closed-path systems (LI-7000, LI-7200 and G1301-f) were processed, and the impact of different processing step combinations was analysed using runs performed with EddyUH and EddyPro. Among the different calculation procedures analysed, the spectral correction was the most relevant for the closed-path LE measurements at the two sites, the median values being between 6 and 16 %. On average, the use of theoretical spectral correction gave up to 6 % lower LE in Erottaja, while in Siikaneva the deviation respect to the reference run was generally below 3 %. We determined a stronger RH dependence of low-pass filter time constant in Erottaja than in Siikaneva (Fig. 7) caused by the non-heated sampling line there (Nordbo et al., 2013). Moreover, because of different approaches in the spectral correction methods, the low-pass filter time constants estimated by EddyPro in Erottaja were larger than those estimated by EddyUH for RH values lower than 80 % (Fig. 7c). This may explain the 2 % difference between LI-7200 LE as estimated by EddyPro and EddyUH (Fig. 2g). Although the relative magnitudes of spectral corrections are not directly comparable with other studies, they are in the same range as previously reported (Fig. 1). Surprisingly, at Siikaneva the theoretical spectral correction gave on average 7 % higher F_{CO_2} and F_{CH_4} than the experimental spectral correction, and the result was consistent between the software packages. A possible explanation could be that in the

site-specific co-spectral model used in the reference run, the co-spectral peak frequency $n_m = 0.056$ estimated in unstable conditions is shifted to lower frequencies respect to the Kaimal et al. (1972)-based atmospheric surface layer (ASL) co-spectral model used in the theoretical spectral correction (Moncrieff et al., 1997). In addition, in stable conditions the stability dependence of the estimated n_m is less pronounced, and it does not follow the ASL parameterisation strictly (data not shown). This would result in smaller spectral corrections when using the site-specific co-spectral model in Eq. (C2). Generally it is thought that the theoretical approach easily underestimates the high-frequency spectral attenuation for closed-path systems, because of potential variations in the mass flow rates and relative uncertainty in the flow regime (Aubinet et al., 2000). Recent studies, both in the lab and in the field, have also demonstrated the important effects that different dust filters and rain caps (typically mounted at the tube inlet) have on the EC system cut-off frequency (Aubinet et al., 2016; Metzger et al., 2016). Such effects are not included in the theoretical approach. However, we have shown in this study how the use of a site-specific co-spectral model can reverse the relative magnitude of spectral correction calculated with the experimental approach compared to the one obtained via the theoretical approach.

In addition, we found that in Siikaneva the LI-7000 F_{CO_2} was greatly affected by the dilution effect due to large H₂O fluxes (average daytime value of LE equals 170 W m^{-2}) caused by the wet surface conditions and the presence of vegetation at the site. The same correction affected less F_{CH_4}

Table 2. Cumulative sums estimated with EddyUH and EddyPro. Relative differences and data coverage are also shown. Data were not gap-filled prior to calculation of the cumulative sums.

	Siikaneva fen (May–June 2010)				Eröttaja urban site (July–September 2010)					
	F_{CH_4} (g(CH ₄) m ⁻²)		F_{CO_2} (g(CO ₂) m ⁻²)		ET (mm)		F_{CO_2} (g(CO ₂) m ⁻²)		ET (mm)	
	G1301-f	LI-7700	LI-7700 ¹	LI-7000	G1301-f	LI-7000	LI-7200	LI-7500	LI-7200	LI-7500
EddyUH	2.25	0.26	0.26	-126	137	127	1060	1039	30	29
EddyPro	2.25	0.27	0.25	-122	135	126	1062	1066	30	31
(EddyUH – EddyPro) / EddyPro	0.03 %	-6.7 %	1.0 %	3.3 %	1.5 %	1.3 %	-0.2 %	-2.5 %	0.7 %	-5.3 %
Data coverage	73 %	21 %	21 %	61 %	71 %	69 %	37 %	39 %	29 %	30 %

¹ No sensor separation correction in EddyPro.

measured by G1301-f, because the flux to concentration ratio for CH₄ was larger than the one for CO₂. In Eröttaja the same effect on F_{CO_2} measured by LI-7200 was much lower (on average 2 %), because of the 3 times smaller daytime values of LE at this urban site. Besides this, the sampling line was not heated in Eröttaja, and different magnitude of the dilution correction between the two sites was expected. In fact, although the heating (and insulation) of the sampling line decreased the H₂O low-pass filter effect (especially at increasing values of RH), at the same time it increased the H₂O fluctuations in the sampled air, leading to larger dilution correction. It is common to think that the WPL and spectroscopic corrections have small importance for closed-path analysers, since the temperature fluctuations are dampened in the sampling tube (Leuning and Judd, 1996; Rannik et al., 1997). However, this depends on the magnitude of H₂O fluctuations, which, as we have demonstrated here, is related to the ecosystem type and system set-up. Fortunately, current closed-path gas analysers also report H₂O turbulent signals, and the measured gas mole fractions can be readily converted into dry mole fractions, either in the analyser internal software or in the post-field data processing by using the point-by-point dilution and spectroscopic corrections.

Finally, for our sites and datasets, the use of nominal constant time lag was only an issue for nocturnal LE, when the absorption effect on H₂O in the sampling line became more relevant, determining an increase of H₂O time lag, and thus flux underestimations of 2 and 7 % in Siikaneva and 3 % in Eröttaja, respectively (see Figs. 5c and d, 6b). Daytime deviations were very small because of the strategy adopted for searching the H₂O time lag (see Appendix B).

4.2 Critical steps and recommendations for open-path systems

For open-path gas analysers the WPL correction is the most critical step, and although it depends on ecosystem type, season and target gas, the WPL correction terms can often surpass the magnitude of the flux itself and also change the sign

of the measured target gas flux (e.g. Peltola et al., 2013). Thus it is critical to perform this correction accurately, especially when small target gas fluxes co-occur with large H and LE fluxes. Here, we have shown that LI-7500 F_{CO_2} values, measured at Eröttaja urban site, are underestimated by 38 % on average if the correction is omitted, and the impact of the combined WPL and spectroscopic correction is even larger for LI-7700 F_{CH_4} measured at the Siikaneva fen site (Sect. 3.3). A 2 % difference of daytime values of H , as calculated by the two software packages, was found in Siikaneva (data not shown). The difference stems from the fact that in EddyUH a site-specific co-spectral model is used in the spectral correction, whereas EddyPro uses the co-spectral model from Moncrieff et al. (1997) in doing the spectral correction to H . Nevertheless, the effect on WPL and spectroscopic correction terms for LI-7700 F_{CH_4} was negligible, as seen in Fig. 3.

If the response time which characterises the measurement system ability to measure the flux contribution of small eddies, i.e. high frequencies, is determined using power spectra, as done in EddyPro (Fratini et al., 2012), then the high-frequency dampening caused by spatial sensor separation needs to be estimated separately. In EddyPro it was done using the method proposed by Horst and Lenschow (2009), while EddyUH uses cospectra to estimate the measurement system's high-frequency response, and thus no additional correction for sensor separation is needed. The Horst and Lenschow (2009) method is based on co-spectral peak frequency (n_m) parameterisations against the stability parameter ζ , in addition to the ASL co-spectral model (as presented in Horst, 1997). Using these assumptions, they derived a dependence between the signal dampening due to sensor separation and the co-spectral peak wavenumber and sensor separation in crosswind, along-wind and vertical directions.

For LI-7700 at the Siikaneva site, it was shown that this correction resulted in systematic differences between the software packages (Sect. 3.4) and between the two co-located CH₄ instruments (Sect. 3.2). The correction method seemed to overcorrect LI-7700 CH₄ fluxes, which resulted in CH₄

fluxes that are too high. As mentioned above, the correction method relies on n_m vs. ζ parameterisations and Horst (1997) co-spectral model and, if these do not comply with the spectral characteristics of turbulence observed at the site, then the correction will be biased. Furthermore, LI-7700 was situated significantly below the sonic anemometer (0.45 m) when compared with the sonic measurement height (2.75 m), and possibly, in such cases, the correction method does not perform well. Nevertheless, the difference observed in this study emphasises the need for accurate spectral corrections and the importance of minimising the sensor separation when constructing an EC measurement set-up. The sensor separation corrections are especially important for open-path analysers, since they cannot be mounted very close to the sonic anemometer due to their size and the flow distortion they may create.

5 Conclusions

We have estimated and analysed the flux uncertainty due to the use of two software packages, using datasets 2 and 3 months long including CO₂, CH₄ and LE fluxes measured over a wetland and an urban site in Finland. Outputs from EddyUH and EddyPro, two popular software packages for post-field processing of eddy covariance data, were compared. We evaluated the most critical processing steps, determining the largest deviations in the calculated fluxes. We found that the raw data preparation and processing steps were consistent between the software packages, and most of the deviations in the estimated fluxes were due to the flux corrections. Among

the different calculation procedures analysed, the spectral correction was the most relevant for closed-path LE fluxes, reaching a night-time median value of 15 % at the wetland site. We found up to 43 % deviation (with respect the reference run) if the closed-path CO₂ flux is calculated without the dilution correction, while the CH₄ fluxes were up to 10 % lower without dilution and spectroscopic corrections. The WPL (and spectroscopic) correction was the most critical step for open-path systems. However, we also found large spectral correction factors for the open-path CH₄ fluxes, due to the sensor separation effect. Turbulent fluxes calculated with a reference combination of processing steps were in good agreement, the systematic difference between the two software packages being up to 2 and 6.7 % for half-hour and 2-month cumulative sum values, respectively. This result is an improvement with respect to earlier software inter-comparison studies (e.g. Mauder et al., 2008), and it suggests that a consistent choice of implemented methods for the post-field processing steps can minimise the systematic flux uncertainty due to the usage of different software packages. Finally, it is recommended for future studies that the impacts of processing steps on fluxes are investigated in more detail, including validation of new methods and corrections across different types of compounds/instruments and ecosystems.

6 Data availability

Data are freely available upon request from the authors.

Appendix A: General description of EddyUH

EddyUH (https://www.atm.helsinki.fi/Eddy_Covariance/EddyUHsoftware.php) is written in MATLAB and includes a graphical user interface (GUI). In order to advance methodological issues (concerning especially CH₄ and N₂O fluxes), besides standardised procedures, the most recent corrections and methods have also been implemented in EddyUH (see Table A1).

Post-field EC data processing with EddyUH is done through user-defined projects. A project in this context means a certain time period of data from a certain site that are processed with certain user-defined processing methods. These methods are determined by the user using the GUI and are saved in a set-up file where the site specifics and measurement system characteristics among other things are also defined. Therefore, all the processed data are always related to the saved project. The same project may include up to five different gas analysers combined with the same ultra-sonic anemometer, giving the possibility for the user to process several raw datasets at the same time. The software includes

a number of modules, which operate at different levels of post-processing (Fig. A1). Preliminary fluxes are calculated in the preprocessor, where the first level of processing is done to the raw dataset. Then several corrections are applied in the flux-calculation module, and the final fluxes are calculated (Table A1). In order to optimise the processing and properly apply all needed corrections, several software tools are available (Fig. A1). Co-spectral data are used in the high-frequency spectral transfer function estimator, where the low-pass filter time constant is experimentally estimated for each gas according to Mammarella et al. (2009). This approach is particularly relevant in the case of closed-path systems. Further, the time lag optimiser is a useful tool to verify the correctness of the chosen time lag window (and eventually refine it) for each gas, as well as to determine the varying window boundaries for H₂O as explained in Appendix B. Finally, other modules are available in EddyUH, for example for analysing the estimated spectra and cospectra, for calculating flux uncertainties and for determining the flux footprint statistics according to the Kormann and Meixner (2001) model (Fig. A1).

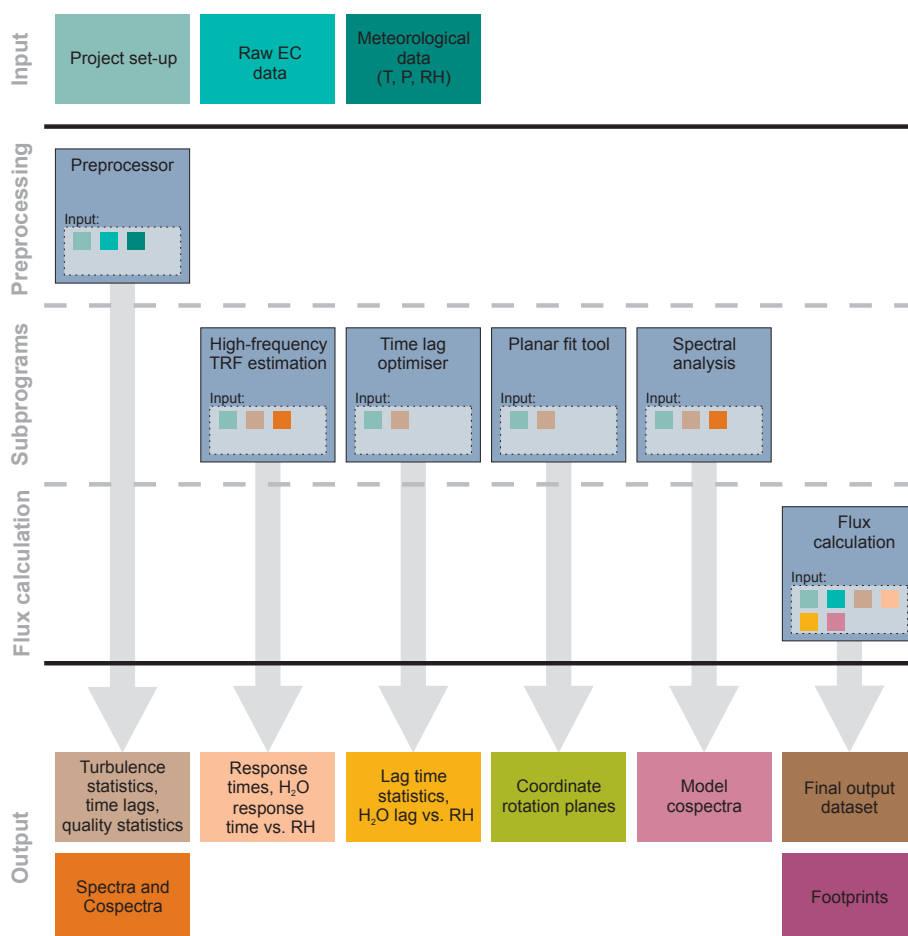


Figure A1. Flow chart of EddyUH.

Table A1. List of implemented methods for data processing in EddyUH.

Raw data preparation and processing	Implemented methods
Quality control and spike detection	Raw data quality tests (Vickers and Mahrt, 1997), diagnostic flags; several despiking methods (Rebmann et al., 2012)
Conversion to dry mole fraction for closed-path gas analysers	Dilution correction point by point
Spectroscopic correction	Rella et al. (2010)
Calculation of turbulent fluctuations	Block averaging, linear detrending and autoregressive running mean filter (Rebmann et al., 2012)
Coordinate rotation	Planar fit (Wilczak et al., 2001), sector-wise planar fit, 2-D rotation (Rebmann et al., 2012)
Crosswind correction of sonic temperature	Liu et al. (2001)
Time lag determination	Constant time lag, cross-covariance maximisation, time lag optimisation
Quality statistics	Flux steady-state and integral turbulence characteristics (Foken and Wichura, 1996), instrumental noise (Lenschow et al., 2000) and random flux error (Finkelstein and Sims, 2001)
Corrections to the covariances	Implemented methods
Stability parameter	Eq. (C1)
High-frequency loss	Theoretical method (Moncrieff et al., 1997); experimental method, e.g. empirical estimation of TF_H and cospectra model (Mammarella et al., 2009)
Low-frequency loss	Rannik and Vesala (1999)
Humidity correction of sonic temperature	van Dijk et al. (2004)
WPL correction	Based on Webb et al. (1980) for open-path gas analysers and Ibrom et al. (2007b) for closed-path gas analysers
Spectroscopic correction	Based on McDermitt et al. (2011) for open-path gas analysers and Peltola et al. (2014) for closed-path gas analysers

Appendix B: Raw data preparation and processing in EddyUH

In the first level of data processing several operations are done to the raw dataset in order to calculate uncorrected covariances of interest. Several methods related to these processing steps are available (see Table A1), and they are briefly presented below.

B1 Quality control and despiking

The raw data are quality-flagged according to physical plausible ranges of high-frequency values of each variable, diagnostic parameters (if available) and several tests, as described in Vickers and Mahrt (1997). Further spikes are then detected, and commonly, this is done applying the Vickers and Mahrt (1997) method. However, other methods also exist in EddyUH, e.g. the difference limits method, which compare the difference between consecutive data points to a given threshold for each raw data time series (see Rebmann et al., 2012 for more details). If the time series contains too many spikes, the data might be useless and a flux should not be calculated for the averaging period of interest (commonly 30 min). Foken (2008) suggests excluding time series with more than 1 % spikes from further analysis.

B2 Point-by-point conversion to dry mole fraction for closed-path gas analysers (dilution correction)

Current closed-path gas analysers measure H_2O inside the sampling cell, making the conversion of gas mole fraction relative to dry air possible through a point-by-point dilution correction.

B3 Point-by-point spectroscopic correction for closed-path gas analysers

In addition, H_2O affects the shape and width of an absorption line used to estimate gas concentration via pressure broadening. This cross-interference can be corrected with the so-called spectroscopic correction (e.g. Rella et al., 2010). Many of the new laser-based gas analysers output dry mole fraction and thus no dilution or spectroscopic corrections are needed during data post-processing. However, for older gas analysers these corrections are needed.

B4 Coordinate rotation

A coordinate rotation is applied to the wind velocity components, in order to align the x axis parallel to the mean wind direction and to set the mean vertical velocity equal to zero. This is done according to common practice with two alternative approaches, the so-called 2-D rotation (Rebmann et al., 2012) or the planar-fit method (Wilczak et al., 2001).

B5 Calculation of turbulent fluctuations

In order to extract the turbulent fluctuations from the measured time series, the mean values are subtracted from the time series. There are three methods available in EddyUH, i.e. block averaging, linear detrending and autoregressive filtering (Rebmann et al., 2012). Of these three methods, only block averaging fulfils the Reynolds averaging rules. All methods attenuate the low-frequency part of the cospectra. Block averaging has the smallest effect on the cospectra, whereas autoregressive filtering attenuates the cospectra the most (Rannik and Vesala, 1999). Linear detrending and autoregressive filtering are methods used to remove unwanted low-frequency variation (trend) in the signal (e.g. Mammarella et al., 2010). However, often block averaging is recommended.

B6 Crosswind correction of sonic temperature

Sonic anemometers calculate sonic temperature T_s based on three paths, and thus crosswind should be taken into account. The correction can be applied point by point to the temperature fluctuations (Liu et al., 2001; Eq. 10) or to the temperature covariance (Liu et al., 2001; Eq. 12). Note that some sonic anemometers might include this correction in their internal firmware.

B7 Time lag determination and adjustment

The gas signal measured by closed-path analysers usually lags behind the wind speed measurement made with the sonic anemometer. The time lag can be estimated theoretically if sampling tube length and diameter are known, in addition to the flow rate in the tube. However for H_2O the time lag depends on relative humidity due to adsorption and desorption of water on the tube walls (Ibrom et al., 2007a; Mammarella et al., 2009; Massman and Ibrom, 2008). The lag between open-path gas analyser measurement and sonic anemometer measurement is caused by the sensor separation: the further away the gas analyser is from the anemometer, the longer the time lag between the two measurements is. It also depends on wind speed and direction. The time lag (for both open- and closed-path systems) is commonly determined by searching the maximum of cross-covariance between the vertical wind and gas signal time series within a certain predefined lag window. With this method, effects of slightly varying flow rate and relative humidity on H_2O time lag can be properly taken into account. The lag window used should be as narrow as possible; however, it should be wide enough in order to cover the variation in time lag during the processed period. In the preprocessing step of EddyUH, a constant search window is used through the whole measurement period for the time lag estimation. It is advisable to have a clearly wider lag window for H_2O than for other gases, since H_2O time lag increases with RH (Clement, 2004; Nordbo et al., 2012). After

the preprocessor, statistics of the determined time lags can be evaluated with the time lag optimiser, in addition to the H₂O time lag RH dependence. Later these results can be used in the final flux calculation step. For H₂O a RH-dependent lag window can be used. For other gases if the determined lag deviates more than 3σ from the mean time lag (where the averaging period is defined by the user), then the mean time lag is used. This approach limits the possibility for erroneous time lags, which may occur if no clear maximum in the cross-covariance can be found.

B8 Final step and outputs of EddyUH preprocessor

Finally, covariances are calculated as a final step of the first processing level, which is performed by the preprocessor in EddyUH. Besides covariances and time lag estimates, the EddyUH preprocessor outputs include wind and gas signals statistics (mean, standard deviation, skewness, kurtosis), power spectra and cospectra for each averaging time period. In addition, quality statistics parameters are also calculated, e.g. flux steady-state and integral turbulence characteristics (Foken and Wichura, 1996), instrumental noise (Lenschow et al., 2000) and random flux error (Finkelstein and Sims, 2001). All these data are saved in monthly binary files, and then used by other modules (Fig. A1).

Appendix C: Corrections to the covariances in EddyUH

In the second level of processing, several corrections must be applied to the 30 min covariances, and the set of corrections are different for closed- and open-path systems (see Fig. 1). At this stage the estimated covariances are used to calculate the stability parameter defined as

$$\zeta = \frac{z-d}{L} = (z-d) \left(-\frac{T_p u_*^3}{g \kappa w' T'_s} \right)^{-1}, \quad (\text{C1})$$

where z is the measurement height (m), d the displacement height, (m), L the Obukhov length (m), T_p the potential temperature (K), $u_* = \sqrt[4]{u'w'^2 + v'w'^2}$ the friction velocity (m s^{-1}), g the acceleration due to the gravity (m s^{-2}) and κ the von Karman constant.

C1 Spectral correction

Flux loss at high frequency is due to the incapability of the measurement system to detect small-scale variation. The inadequate frequency response, sensor separation and line averaging, and, in closed-path systems, the air sampling trough tubes and filters are the main reasons causing co-spectral attenuation. On the other hand, flux loss at low frequency is due to limited averaging period (30 min) and trend removal. The frequency response correction is usually performed based on a priori knowledge of the system transfer function and the

unattenuated cospectrum, e.g.

$$\text{CF} = \frac{\int_0^\infty C_{ws}(f) df}{\int_0^\infty \text{TF}(f) C_{ws}(f) df}. \quad (\text{C2})$$

Here CF is the estimated spectral correction factor, C_{ws} the normalised unattenuated cospectrum, f the frequency and $\text{TF} = \text{TF}_H \cdot \text{TF}_L$ the total transfer function. The correction, performed by multiplying the covariance by the factor CF, always increases the flux magnitude. The low-frequency correction depends on the method used for calculating the turbulent fluctuations (see Appendix B), and is performed using theoretically derived formulations for TF_L (Rannik and Vesala, 1999).

The high-frequency transfer function TF_H can be derived either theoretically or experimentally (Foken et al., 2012). The correction is different for momentum flux, sensible and latent heat fluxes and other gas fluxes, and it differs between open- and closed-path EC systems. In the theoretical approach, the ASL co-spectral models (Moncrieff et al., 1997) are used, and TF_H is calculated as superposition of specific transfer functions representing different causes of flux loss, whose formulas can be found in Leuning and Judd (1996), Moncrieff et al. (1997) and Moore (1986). This approach works fine for correcting the momentum and sensible heat flux, as well as for gas fluxes measured by open-path systems. Alternatively, the experimental approach can be used, where the model cospectra and TF_H are estimated using in situ measurements. Different methods have been proposed for retrieving the TF_H from the measured power spectra or cospectra of T_s and the target gas dry mole fraction (Fratini et al., 2012; Ibrom et al., 2007a; Mammarella et al., 2009; Nordbo et al., 2014). In EddyUH the method by Mammarella et al. (2009) is included. Many studies have used the theoretical approach because it is simpler to apply, while the experimental approach requires site- and sensor-specific investigations.

C2 WPL correction

For measurements done with an open-path gas analyser, fluctuations in air density cause apparent variations in measured scalar concentration, and this needs to be corrected according to Webb et al. (1980). The correction is performed to 30 min fluxes of the target gas, and the H₂O and temperature covariances used in the correction should correspond to situations in ambient air, e.g. those that are fully corrected. For closed-path gas analyser the correction can be done to the covariances as well as an alternative of the point-by-point dilution correction applied to the raw data. The correction is less critical than for an open-path gas analyser due to the fact that the temperature fluctuations are usually dampened in the sampling line (Rannik et al., 1997). Then, only H₂O fluctuations are relevant, and it is preferable that H₂O is measured in the same cell as the gas whose flux is corrected. If this is not

the case, then external H₂O measurements can be used, provided that the H₂O covariance is modified to correspond to circumstances in the measurement cell (Ibrom et al., 2007b; Peltola et al., 2014).

C3 Spectroscopic correction

Gas molar concentration measurements carried out with instruments based on laser spectroscopy (like LI-7700 and G1301-f analysers) also require corrections for spectroscopic effects that affect measured values, in addition to the above-mentioned WPL or dilution corrections. As these spectroscopic effects are related to the changes in shape of the absorption line, due to the changes in gas temperature, H₂O and pressure, one can incorporate the spectroscopic effects into WPL terms (modified equation) (McDermitt et al., 2011).

When estimating the CH₄ fluxes using the LI-7700, one should always use the temperature coming from the sonic anemometer and not those recorded by the in-path thermocouple of the LI-7700 instrument. Furthermore, one should always use the uncorrected CH₄ molar concentration (mmol m⁻³) for flux measurements, while H₂O fluxes necessary to compute CH₄ fluxes should be acquired with an H₂O analyser (in our study LI-7000).

For closed-path systems measuring H₂O in the same sampling cell, it is simple to do the correction to the raw data point by point (see above). In case H₂O is not measured internally, it is preferably to dry the air samples or to have external H₂O measurements. In the latter case the correction can be applied to the half-hourly averaged fluxes according to the method proposed by Peltola et al. (2014).

C4 Humidity correction of sonic temperature

The correction is based on the transformation of sonic temperature (T_s) to actual air temperature (T). In EddyUH, the updated version (van Dijk et al., 2004) of the original Schotanus et al. (1983) correction is implemented. Following the derivation in van Dijk et al. (2004) the temperature covariance is calculated as

$$\overline{w'T'} = (1 - 0.51\bar{q})\overline{w'T'_s} - 0.51\bar{T}\overline{w'q'}, \quad (\text{C3})$$

where $\overline{w'T'_s}$ and $\overline{w'q'}$ are the final sonic temperature and H₂O covariances (e.g. after spectral correction), and q is specific humidity (kg (H₂O) kg (moist air)⁻¹). The covariance $\overline{w'T'}$ is then used in Eq. (3) to calculate H , while the covariance $\overline{w'T'_s}$ is used to recalculate the stability parameter in Eq. (C1).

C5 Iteration of corrections

Corrections to the covariances are repeated in an iteration loop until the flux change is smaller than 0.01 % (see Fig. 1). In EddyUH these steps are performed in the “flux calculation” module, including the estimates of flux density according to Eqs. (1)–(4).

Acknowledgements. The study was supported by Väisälä Foundation, EU projects InGOS and GHG-LAKE (project 612642), Nordic Centre of Excellence DEFROST and National Centre of Excellence (272041), ICOS-FINLAND (281255), CarLAC (281196), funded by Academy of Finland. We would also like to thank Gerardo Fratini for the useful discussion related to this study.

Edited by: C. Ammann

Reviewed by: M. Aubinet and two anonymous referees

References

- Aubinet, M., Grelle, A., Ibrom, A., Rannik, Ü., Moncrieff, J., Foken, T., Kowalski, A., Martin, P. H., Berbigier, P., Bernhofer, C., Clement, R., Elbers, J., Granier, A., Grunwald, T., Morgenstern, K., Pilegaard, K., Rebmann, C., Snijder, W., Valentini, R., and Vesala, T.: Estimates of the annual net carbon and water exchange of forests: The EUROFLUX methodology, *Adv. Ecol. Res.*, 30, 113–175, 2000.
- Aubinet, M., Vesala, T., and Papale, D.: *Eddy Covariance: A Practical Guide to Measurement and Data Analysis*, Springer Netherlands, 2012.
- Aubinet, M., Joly, L., Loustau, D., De Ligne, A., Chopin, H., Cousin, J., Chauvin, N., Decarpenterie, T., and Gross, P.: Dimensioning IRGA gas sampling systems: laboratory and field experiments, *Atmos. Meas. Tech.*, 9, 1361–1367, doi:10.5194/amt-9-1361-2016, 2016.
- Burba, G.: *Eddy Covariance Method for Scientific, Industrial, Agricultural and Regulatory Applications, A Field Book on Measuring Ecosystem Gas Exchange and Areal Emission Rates*, ISBN 978-0-615-76827-4, LI-COR Biosciences, Lincoln, Nebraska, 332 pp., 2013.
- Burba, G. G., McDermitt, D. K., Grelle, A., Anderson, D. J., and Xu, L.: Addressing the influence of instrument surface heat exchange on the measurements of CO₂ flux from open-path gas analyzers, *Glob. Change Biol.*, 14, 1854–1876, 2008.
- Clement, R.: *Mass and Energy Exchange of a Plantation Forest in Scotland Using Micrometeorological Methods*, PhD, Edinburgh, UK, 597 pp., 2004.
- Detto, M., Verfaillie, J., Anderson, F., Xu, L., and Baldocchi, D.: Comparing laser-based open- and closed-path gas analyzers to measure methane fluxes using the eddy covariance method, *Agr. Forest Meteorol.*, 151, 1312–1324, 2011.
- Finkelstein, P. L. and Sims, P. F.: Sampling error in eddy correlation flux measurements, *J. Geophys. Res.-Atmos.*, 106, 3503–3509, 2001.
- Foken, T.: *Micrometeorology*, Springer, Berlin, Germany, 2008.
- Foken, T. and Wichura, B.: Tools for quality assessment of surface-based flux measurements, *Agr. Forest Meteorol.*, 78, 83–105, 1996.
- Foken, T., Göckede, M., Mauder, M., Mahrt, L., Amiro, B., and Munger, J. W.: Post-field data quality control, in: *Handbook of Micrometeorology*, edited by: Lee, X., Massman, W., and Law, B., Kluwer Academic Publishers, Dordrecht, the Netherlands, 2004.
- Foken, T., Leuning, R., Oncley, S., Mauder, M., and Aubinet, M.: Corrections and data quality control, in: *Eddy Covariance. A Practical Guide to Measurement and Data Analysis*, edited by: Aubinet, M., Vesala, T., and Papale, D., Springer Netherlands, 2012.
- Fratini, G. and Mauder, M.: Towards a consistent eddy-covariance processing: an intercomparison of EddyPro and TK3, *Atmos. Meas. Tech.*, 7, 2273–2281, doi:10.5194/amt-7-2273-2014, 2014.
- Fratini, G., Ibrom, A., Arriga, N., Burba, G., and Papale, D.: Relative humidity effects on water vapour fluxes measured with closed-path eddy-covariance systems with short sampling lines, *Agr. Forest Meteorol.*, 165, 53–63, 2012.
- Horst, T. W.: A simple formula for attenuation of eddy fluxes measured with first-order-response scalar sensors, *Bound.-Lay. Meteorol.*, 82, 219–233, 1997.
- Horst, T. W. and Lenschow, D. H.: Attenuation of Scalar Fluxes Measured with Spatially-displaced Sensors, *Bound.-Lay. Meteorol.*, 130, 275–300, 2009.
- Ibrom, A., Dellwik, E., Flyvbjerg, H., Jensen, N. O., and Pilegaard, K.: Strong low-pass filtering effects on water vapour flux measurements with closed-path eddy correlation systems, *Agr. Forest Meteorol.*, 147, 140–156, 2007a.
- Ibrom, A., Dellwik, E., Larsen, S. E., and Pilegaard, K.: On the use of the Webb–Pearman–Leuning theory for closed-path eddy correlation measurements, *Tellus B*, 59, 2007b.
- Iwata, H., Kosugi, Y., Ono, K., Mano, M., Sakabe, A., Miyata, A., and Takahashi, K.: Cross-Validation of Open-Path and Closed-Path Eddy-Covariance Techniques for Observing Methane Fluxes, *Bound.-Lay. Meteorol.*, 151, 95–118, 2014.
- Järvi, L., Mammarella, I., Eugster, W., Ibrom, A., Siivola, E., Dellwik, E., Keronen, P., Burba, G., and Vesala, T.: Comparison of net CO₂ fluxes measured with open- and closed-path infrared gas analyzers in an urban complex environment, *Boreal Environ. Res.*, 14, 499–514, 2009.
- Kaimal, J. C., Izumi, Y., Wyngaard, J. C., and Cote, R.: Spectral Characteristics of Surface-Layer Turbulence, *Q. J. Roy. Meteor. Soc.*, 98, 563–589, 1972.
- Kormann, R. and Meixner, F. X.: *Bound.-Lay. Meteorol.*, 99, 207–224, 2001.
- Lee, X., Massman, W., and Law, B.: *Handbook of micrometeorology – A guide for surface flux measurement and analysis – Introduction*, Kluwer Academic Publishers, Dordrecht, the Netherlands, 2004.
- Lenschow, D. H., Wulfmeyer, V., and Senff, C.: Measuring second-through fourth-order moments in noisy data, *J. Atmos. Ocean. Tech.*, 17, 1330–1347, 2000.
- Leuning, R. and Judd, M. J.: The relative merits of open- and closed-path analyzers for measurements of eddy fluxes, *Glob. Change Biol.*, 2, 241–253, 1996.
- Liu, H., Peters, G., and Foken, T.: New Equations For Sonic Temperature Variance And Buoyancy Heat Flux With An Omnidirectional Sonic Anemometer, *Bound.-Lay. Meteorol.*, 100, 459–468, 2001.
- Mammarella, I., Launiainen, S., Gronholm, T., Keronen, P., Pumpanen, J., Rannik, Ü., and Vesala, T.: Relative Humidity Effect on the High-Frequency Attenuation of Water Vapor Flux Measured by a Closed-Path Eddy Covariance System, *J. Atmos. Ocean. Tech.*, 26, 1856–1866, 2009.
- Mammarella, I., Werle, P., Pihlatie, M., Eugster, W., Haapanala, S., Kiese, R., Markkanen, T., Rannik, Ü., and Vesala, T.: A case study of eddy covariance flux of N₂O measured within for-

- est ecosystems: quality control and flux error analysis, *Biogeosciences*, 7, 427–440, doi:10.5194/bg-7-427-2010, 2010.
- Mammarella, I., Nordbo, A., Rannik, Ü., Haapanala, S., Levula, J., Laakso, H., Ojala, A., Peltola, O., Heiskanen, J., Pumpanen, J., and Vesala, T.: Carbon dioxide and energy fluxes over a small boreal lake in Southern Finland, *J. Geophys. Res.-Biogeo.*, 120, 1296–1314, 2015.
- Massman, W. J. and Ibrom, A.: Attenuation of concentration fluctuations of water vapor and other trace gases in turbulent tube flow, *Atmos. Chem. Phys.*, 8, 6245–6259, doi:10.5194/acp-8-6245-2008, 2008.
- Mauder, M. and Foken, T.: Impact of post-field data processing on eddy covariance flux estimates and energy balance closure, *Meteorol. Z.*, 15, 597–609, 2006.
- Mauder, M., Oncley, S. P., Vogt, R., Weidinger, T., Ribeiro, L., Bernhofer, C., Foken, T., Kohsiek, W., De Bruin, H. A. R., and Liu, H.: The energy balance experiment EBEX-2000, Part II: Intercomparison of eddy-covariance sensors and post-field data processing methods, *Bound.-Lay. Meteorol.*, 123, 29–54, 2007.
- Mauder, M., Foken, T., Clement, R., Elbers, J. A., Eugster, W., Grünwald, T., Heusinkveld, B., and Kolbe, O.: Quality control of CarboEurope flux data – Part 2: Inter-comparison of eddy-covariance software, *Biogeosciences*, 5, 451–462, doi:10.5194/bg-5-451-2008, 2008.
- McDermitt, D., Burba, G., Xu, L., Anderson, T., Komissarov, A., Riensche, B., Schedlbauer, J., Starr, G., Zona, D., Oechel, W., Oberbauer, S., and Hastings, S.: A new low-power, open-path instrument for measuring methane flux by eddy covariance, *Appl. Phys. B*, 102, 391–405, 2011.
- Metzger, S., Burba, G., Burns, S. P., Blanken, P. D., Li, J., Luo, H., and Zulueta, R. C.: Optimization of an enclosed gas analyzer sampling system for measuring eddy covariance fluxes of H₂O and CO₂, *Atmos. Meas. Tech.*, 9, 1341–1359, doi:10.5194/amt-9-1341-2016, 2016.
- Moncrieff, J., Massheder, J. M., de Bruin, H., Elbers, J., Friborg, T., Heusinkveld, B., Kabat, P., Scott, S., Soegaard, H., and Verhoef, A.: A system to measure surface fluxes of momentum, sensible heat, water vapour and carbon dioxide, *J. Hydrol.*, 188–189, 589–611, 1997.
- Moncrieff, J., Clement, R., Finnigan, J., and Meyers, T.: Averaging, detrending, and filtering of eddy covariance time series, in: *Handbook of Micrometeorology: A guide for Surface Flux Measurement and Analysis*, edited by: Lee, X., Massman, W., Law, B., Lee, X., Massman, W., and Law, B., Kluwer Academic Publishers, Dordrecht, the Netherlands, 2004.
- Moore, C. J.: Frequency response corrections for eddy correlation systems, *Bound.-Layer Meteorol.*, 37, 17–35, 1986.
- Nordbo, A., Järvi, L., and Vesala, T.: Revised eddy covariance flux calculation methodologies – effect on urban energy balance, *Tellus B*, 64, 18184, doi:10.3402/tellusb.v64i0.18184, 2012.
- Nordbo, A., Järvi, L., Haapanala, S., Moilanen, J., and Vesala, T.: Intra-City Variation in Urban Morphology and Turbulence Structure in Helsinki, Finland, *Bound.-Lay. Meteorol.*, 146, 469–496, 2013.
- Nordbo, A., Kekäläinen, P., Siivola, E., Mammarella, I., Timonen, J., and Vesala, T.: Sorption-Caused Attenuation and Delay of Water Vapor Signals in Eddy-Covariance Sampling Tubes and Filters, *J. Atmos. Ocean. Tech.*, 31, 2629–2649, 2014.
- Peltola, O., Mammarella, I., Haapanala, S., Burba, G., and Vesala, T.: Field intercomparison of four methane gas analyzers suitable for eddy covariance flux measurements, *Biogeosciences*, 10, 3749–3765, doi:10.5194/bg-10-3749-2013, 2013.
- Peltola, O., Hensen, A., Helfter, C., Belelli Marchesini, L., Bosveld, F. C., van den Bulk, W. C. M., Elbers, J. A., Haapanala, S., Holst, J., Laurila, T., Lindroth, A., Nemitz, E., Röckmann, T., Vermeulen, A. T., and Mammarella, I.: Evaluating the performance of commonly used gas analysers for methane eddy covariance flux measurements: the InGOS inter-comparison field experiment, *Biogeosciences*, 11, 3163–3186, doi:10.5194/bg-11-3163-2014, 2014.
- Rannik, Ü. and Vesala, T.: Autoregressive filtering versus linear detrending in estimation of fluxes by the eddy covariance method, *Bound.-Lay. Meteorol.*, 91, 259–280, 1999.
- Rannik, Ü., Vesala, T., and Keskinen, R.: On the damping of temperature fluctuations in a circular tube relevant to the eddy covariance measurement technique, *J. Geophys. Res.-Atmos.*, 102, 12789–12794, 1997.
- Rannik, Ü., Haapanala, S., Shurpali, N. J., Mammarella, I., Lind, S., Hyvönen, N., Peltola, O., Zahniser, M., Martikainen, P. J., and Vesala, T.: Intercomparison of fast response commercial gas analysers for nitrous oxide flux measurements under field conditions, *Biogeosciences*, 12, 415–432, doi:10.5194/bg-12-415-2015, 2015.
- Rebmann, C., Kolbe, O., Heinesch, B., Queck, R., Ibrom, A., and Aubinet, M.: Data acquisition and flux calculation, in: *Eddy Covariance: A Practical Guide to Measurement and Data Analysis*, edited by: Aubinet, M., Vesala, T., and Papale, D., Springer Netherlands, 2012.
- Rella, C. W.: Accurate greenhouse gas measurements in humid gas streams using the Picarro G1301 carbon dioxide/methane/water vapor gas analyzer, *Tech. Rep.*, 2010.
- Schotanus, P., Nieuwstadt, F. T. M., and Debruin, H. A. R.: Temperature-Measurement with a Sonic Anemometer and its Application to Heat and Moisture Fluxes, *Bound.-Lay. Meteorol.*, 26, 81–93, 1983.
- van Dijk, A., Moene, A. F., and de Bruin, A. R.: The principles of surface flux physics: Theory, practice and description of the EC-Pack library, *Meteorology and Air Quality Group*, Wageningen University, Wageningen, the Netherlands, 99 pp., 2004.
- Vickers, D. and Mahrt, L.: Quality Control and Flux Sampling Problems for Tower and Aircraft Data, *J. Atmos. Ocean. Tech.*, 14, 512–526, 1997.
- Webb, E. K., Pearman, G. I., and Leuning, R.: Correction of Flux Measurements for Density Effects due to Heat and Water-Vapor Transfer, *Q. J. Roy. Meteor. Soc.*, 106, 85–100, 1980.
- Wilczak, J. M., Oncley, S. P., and Stage, S. A.: Sonic anemometer tilt correction algorithms, *Bound.-Lay. Meteorol.*, 99, 127–150, 2001.