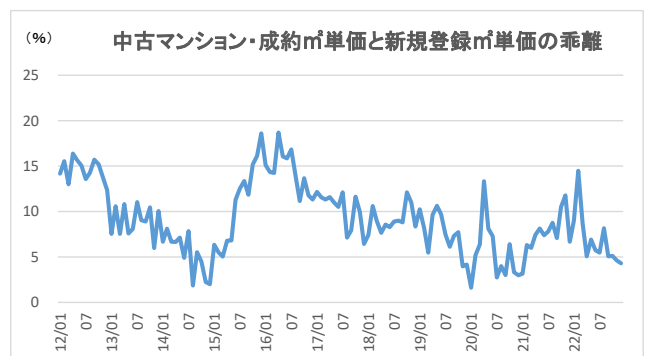
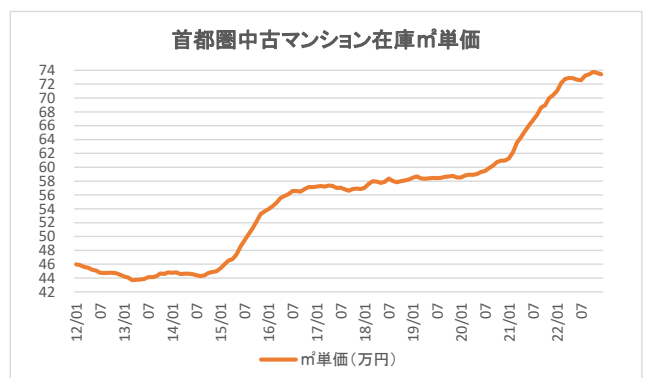
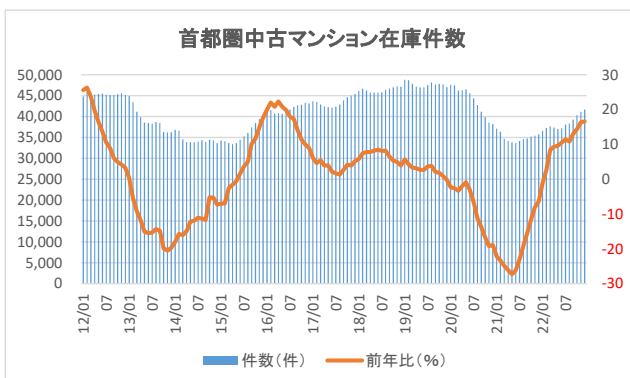
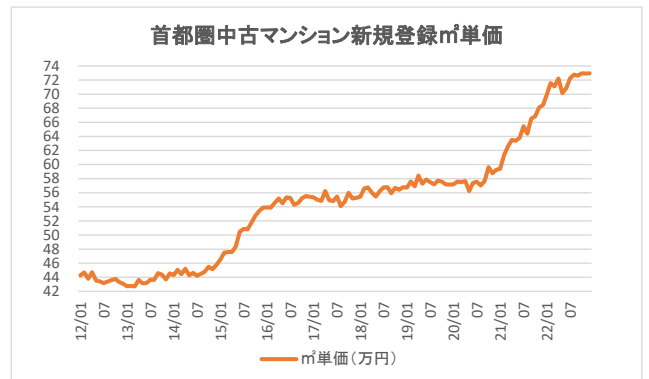
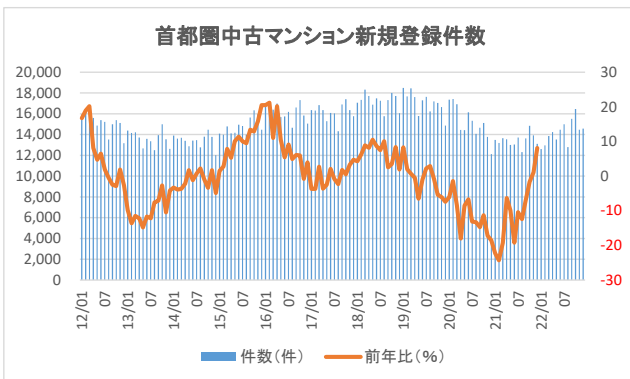
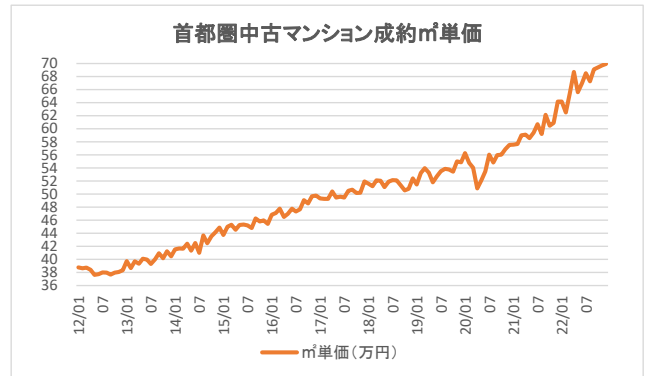
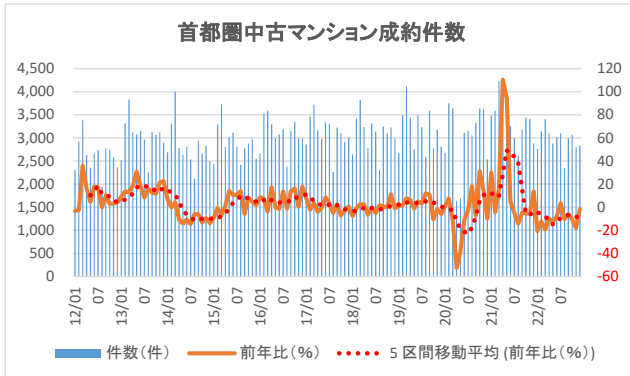


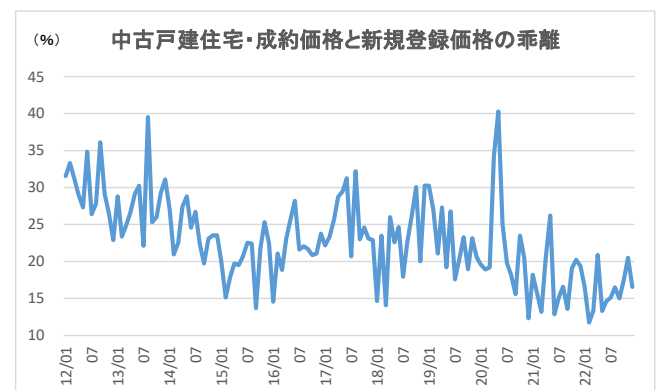
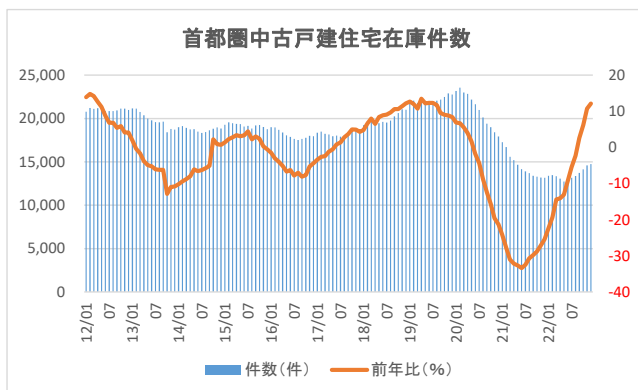
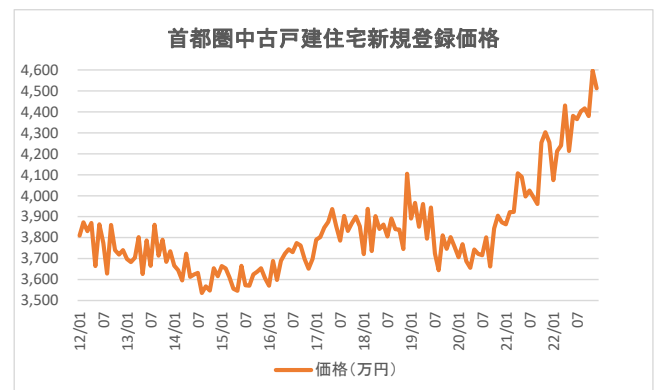
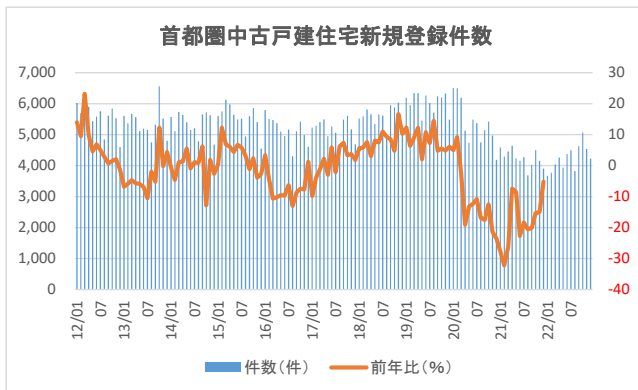
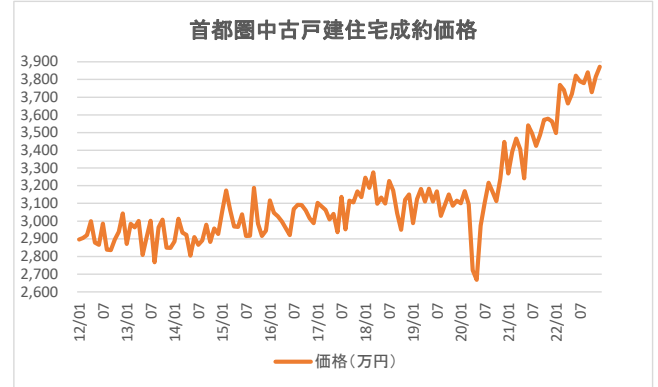
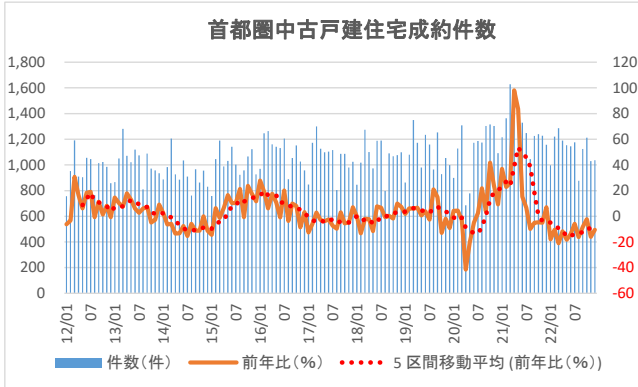
### 1. 中古マンション

- ・直近の成約件数は、新型コロナウイルス感染拡大前の水準を下回り弱含み傾向続く。
- ・在庫件数は底打ちし、直近は前年比増加率が拡大。
- ・成約・新規登録・在庫の各㎡単価は上昇続く。



## 2. 中古戸建住宅

- ・成約件数は、新型コロナウイルス感染拡大前と同程度の水準で推移も、直近は弱含み。
- ・在庫件数は底打ち、直近は前年比プラスに転じる。
- ・成約・新規登録・在庫の各価格は上昇傾向。





年/月	■成約状況					■新規登録状況					■在庫状況				
	件数	㎡単価			件数	㎡単価			件数	㎡単価					
	(件)	前年比(%)	(万円)	前年比(%)	前月比(%)	(件)	前年比(%)	(万円)	前年比(%)	前月比(%)	(件)	前年比(%)	(万円)	前年比(%)	前月比(%)
07	3,304	3.6	49.48	4.5	-0.3	16,040	-0.8	55.47	0.3	1.2	42,353	1.7	57.05	0.9	0.1
08	2,265	-5.0	50.50	5.9	2.1	14,326	-2.3	54.10	-0.4	-2.5	42,842	1.3	56.82	0.4	-0.4
09	3,222	2.3	50.67	3.3	0.3	16,904	1.8	54.68	0.3	1.1	43,843	2.7	56.61	0.2	-0.4
10	3,103	-7.1	50.16	3.3	-1.0	17,391	0.5	56.00	1.4	2.4	44,619	4.2	56.87	0.0	0.5
11	2,904	-2.7	50.20	1.0	0.1	16,350	3.3	55.20	-0.6	-1.4	44,994	3.9	56.91	-0.4	0.1
12	3,011	0.6	51.94	4.3	3.5	15,759	4.7	55.28	-0.3	0.1	45,380	5.2	56.85	-0.5	-0.1
18/01	2,641	-7.7	51.60	4.6	-0.6	17,062	4.3	55.43	0.1	0.3	46,155	5.8	57.05	-0.2	0.4
02	3,424	-1.1	51.19	3.9	-0.8	17,335	6.3	56.62	3.0	2.1	46,675	7.4	57.60	0.5	1.0
03	3,819	2.7	52.11	5.7	1.8	18,325	8.9	56.76	3.5	0.2	46,240	7.8	58.00	1.4	0.7
04	3,237	2.3	52.04	3.3	-0.1	17,704	8.2	56.03	-0.4	-1.3	45,746	7.8	57.92	1.0	-0.2
05	2,785	-6.6	51.07	3.2	-1.9	16,877	10.5	55.45	0.9	-1.0	45,713	8.2	57.74	0.8	-0.3
06	3,317	-0.5	51.90	4.6	1.6	17,477	8.7	56.20	2.5	1.4	45,712	8.5	57.89	1.6	0.3
07	3,139	-5.0	52.13	5.4	0.4	17,242	7.5	56.77	2.3	1.0	45,780	8.1	58.38	2.3	0.8
08	2,303	1.7	52.10	3.2	0.0	15,768	10.1	56.79	5.0	0.0	46,376	8.2	58.03	2.1	-0.6
09	3,244	0.7	51.39	1.4	-1.4	17,323	2.5	55.92	2.3	-1.5	46,701	6.5	57.83	2.2	-0.4
10	3,096	-0.2	50.57	0.8	-1.6	18,008	3.5	56.69	1.2	1.4	46,971	5.3	57.99	2.0	0.3
11	3,225	11.1	50.82	1.2	0.5	17,716	8.4	56.42	2.2	-0.5	47,258	5.0	58.08	2.1	0.2
12	2,987	-0.8	52.41	0.9	3.1	16,064	1.9	56.79	2.7	0.7	47,150	3.9	58.24	2.4	0.3
19/01	2,667	1.0	51.46	-0.3	-1.8	18,479	8.3	56.73	2.3	-0.1	48,796	5.7	58.50	2.5	0.4
02	3,484	1.8	53.25	4.0	3.5	17,677	2.0	57.61	1.7	1.5	48,688	4.3	58.67	1.9	0.3
03	4,117	7.8	53.96	3.6	1.3	18,451	0.7	56.92	0.3	-1.2	47,784	3.3	58.40	0.7	-0.5
04	3,440	6.3	53.29	2.4	-1.3	17,617	-0.5	58.43	4.3	2.7	47,191	3.2	58.34	0.7	-0.1
05	2,749	-1.3	51.80	1.4	-2.8	15,776	-6.5	57.30	3.3	-1.9	46,951	2.7	58.39	1.1	0.1
06	3,490	5.2	52.75	1.6	1.8	17,301	-1.0	57.86	2.9	1.0	46,962	2.7	58.46	1.0	0.1
07	3,233	3.0	53.51	2.6	1.4	17,627	2.2	57.52	1.3	-0.6	47,480	3.7	58.44	0.1	0.0
08	2,584	12.2	53.88	3.4	0.7	16,228	2.9	57.18	0.7	-0.6	48,157	3.8	58.45	0.7	0.0
09	3,589	10.6	53.79	4.7	-0.2	17,189	-0.8	57.72	3.2	0.9	47,660	2.1	58.63	1.4	0.3
10	2,771	-10.5	53.45	5.7	-0.6	17,033	-5.4	57.58	1.6	-0.2	47,805	1.8	58.69	1.2	0.1
11	3,175	-1.6	55.01	8.2	2.9	16,640	-6.1	57.20	1.4	-0.7	47,699	0.9	58.73	1.1	0.1
12	2,810	-5.9	54.89	4.7	-0.2	14,873	-7.4	57.17	0.7	-0.1	47,051	-0.2	58.51	0.5	-0.4
20/01	2,680	0.5	56.29	9.4	2.6	17,351	-6.1	57.20	0.8	0.0	47,624	-2.4	58.51	0.0	0.0
02	3,749	7.6	54.76	2.8	-2.7	17,421	-1.4	57.60	0.0	0.7	47,423	-2.6	58.80	0.2	0.5
03	3,642	-11.5	54.05	0.2	-1.3	16,910	-8.4	57.51	1.0	-0.1	46,192	-3.3	58.94	0.9	0.2
04	1,629	-52.6	50.88	-4.5	-5.9	14,445	-18.0	57.66	-1.3	0.3	46,251	-2.0	58.90	1.0	-0.1
05	1,692	-38.5	52.03	0.4	2.3	14,432	-8.5	56.25	-1.8	-2.4	46,507	-0.9	59.04	1.1	0.2
06	3,107	-11.0	53.48	1.4	2.8	16,143	-6.7	57.39	-0.8	2.0	45,555	-3.0	59.32	1.5	0.5
07	3,156	-2.4	56.03	4.7	4.8	15,319	-13.1	57.57	0.1	0.3	44,350	-6.6	59.47	1.8	0.3
08	3,053	18.2	54.85	1.8	-2.1	14,069	-13.3	57.04	-0.2	-0.9	42,731	-11.3	59.87	2.4	0.7
09	3,328	-7.3	55.98	4.1	2.1	14,656	-14.7	57.67	-0.1	1.1	41,137	-13.7	60.21	2.7	0.6
10	3,636	31.2	56.04	4.8	0.1	15,106	-11.3	59.63	3.6	3.4	39,829	-16.7	60.74	3.5	0.9
11	3,620	14.0	56.87	3.4	1.5	13,773	-17.2	58.76	2.7	-1.5	38,520	-19.2	60.95	3.8	0.3
12	2,533	-9.9	57.53	4.8	1.1	12,125	-18.5	59.25	3.6	0.8	38,173	-18.9	60.99	4.2	0.1
21/01	3,480	29.9	57.57	2.3	0.1	13,480	-22.3	59.39	3.8	0.3	37,054	-22.2	61.28	4.7	0.5
02	3,587	-4.3	57.67	5.3	0.2	13,192	-24.3	61.31	6.4	3.2	36,323	-23.4	62.17	5.7	1.5
03	4,228	16.1	59.02	9.2	2.3	13,648	-19.3	62.56	8.8	2.0	34,701	-24.9	63.57	7.9	2.2
04	3,428	110.4	59.10	16.1	0.1	13,539	-6.3	63.49	10.1	1.5	34,184	-26.1	64.35	9.3	1.2
05	3,297	94.9	58.59	12.6	-0.9	13,003	-9.9	63.36	12.6	-0.2	33,801	-27.3	65.24	10.5	1.4
06	3,262	5.0	59.42	11.1	1.4	13,049	-19.2	63.81	11.2	0.7	33,641	-26.2	66.07	11.4	1.3
07	3,002	-4.9	60.71	8.4	2.2	13,723	-10.4	65.45	13.7	2.6	34,159	-23.0	66.80	12.3	1.1
08	2,615	-14.3	59.20	7.9	-2.5	12,319	-12.4	64.38	12.9	-1.6	34,594	-19.0	67.57	12.9	1.2
09	3,176	-4.6	62.13	11.0	4.9	13,637	-7.0	66.53	15.4	3.3	34,742	-15.5	68.60	13.9	1.5
10	3,440	-5.4	60.49	7.9	-2.6	14,842	-1.7	66.84	12.1	0.5	35,216	-11.6	68.96	13.5	0.5
11	3,416	-5.6	60.92	7.1	0.7	13,931	1.1	68.10	15.9	1.9	35,389	-8.1	69.97	14.8	1.5
12	2,881	13.7	64.17	11.6	5.3	13,111	8.1	68.45	15.6	0.5	35,718	-6.4	70.44	15.5	0.7
22/01	2,760	-20.7	64.18	11.5	0.0	12,597	-	69.95	-	-	36,632	-1.1	71.02	15.9	0.8
02	3,146	-12.3	62.51	8.4	-2.6	12,951	-	71.56	-	2.3	37,259	2.6	72.12	16.0	1.5
03	3,405	-19.5	65.40	10.8	4.6	13,852	-	71.10	-	-0.6	37,660	8.5	72.77	14.5	0.9
04	3,094	-9.7	68.72	16.3	5.1	14,226	-	72.21	-	1.6	37,360	9.3	72.90	13.3	0.2
05	2,877	-12.7	65.61	12.0	-4.5	13,527	-	70.15	-	-2.9	37,039	9.6	72.87	11.7	0.0
06	3,003	-7.9	66.99	12.8	2.1	14,461	-	70.84	-	1.0	37,179	10.5	72.65	10.0	-0.3
07	3,104	3.4	68.51	12.9	2.3	14,982	-	72.27	-	2.0	38,062	11.4	72.56	8.6	-0.1
08	2,346	-10.3	67.29	13.7	-1.8	12,795	-	72.78	-	0.7	38,344	10.8	73.24	8.4	0.9
09	2,990	-5.9	69.10	11.2	2.7	15,512	-	72.60	-	-0.2	39,274	13.0	73.41	7.0	0.2
10	3,072	-10.7	69.40	14.7	0.4	16,446	-	72.95	-	0.5	40,300	14.4	73.77	7.0	0.5
11	2,797	-18.1	69.69	14.4	0.4	14,469	-	72.91	-	-0.1	41,158	16.3	73.61	5.2	-0.2
12	2,835	-1.6	69.94	9.0	0.4	14,570	-	72.95	-	0.1	41,665	16.6	73.43	4.3	-0.2

基本データ② 中古戸建住宅

\* 2021年1月度より、戸建住宅の用途地域が未設定・無指定の物件について集計対象から除外する等の集計条件の変更を行い、新たな集計条件に基づき算出しているため、2021年1～12月の前年比および同年1月の前月比の数値は既に公表している数値と比較した前年比・前月比ではありません。  
 \* 2022年1月度より、新規登録の集計範囲を変更し、新規登録は媒介契約更新や登録期間延長を除く新たな登録のみに絞って計上しており、これまでと同じ基準での比較は困難であると判断し、2022年1～12月の前年比および同年1月の前月比は掲載しません(「-」と記載します)。

年/月	■成約状況			■新規登録状況			■在庫状況								
	件数 (件)	前年比(%)	価格 (万円)	前年比(%)	前月比(%)	件数 (件)	前年比(%)	価格 (万円)	前年比(%)	前月比(%)	件数 (件)	前年比(%)	価格 (万円)	前年比(%)	前月比(%)
12/01	756	-6.3	2,896	-5.6	0.8	6,017	14.0	3,810	-0.5	-2.0	20,766	13.9	4,070	-2.4	-0.6
02	953	-3.3	2,905	-5.2	0.3	5,693	9.5	3,873	-2.9	1.7	21,216	14.8	4,056	-3.1	-0.3
03	1,192	30.8	2,921	-1.1	0.5	5,950	23.2	3,831	-2.0	-1.1	21,121	14.2	4,043	-3.1	-0.3
04	909	16.4	3,000	6.5	2.7	5,900	9.9	3,870	-3.6	1.0	21,181	12.6	4,025	-2.9	-0.5
05	904	6.2	2,879	-2.9	-4.1	5,438	4.6	3,665	-6.6	-5.3	21,010	11.2	3,984	-3.8	-1.0
06	1,056	18.4	2,866	-1.3	-0.4	5,584	6.9	3,864	-3.8	5.4	20,859	8.7	4,004	-4.1	0.5
07	1,045	19.0	2,986	0.7	4.2	5,753	5.0	3,774	-2.6	-2.3	20,859	6.8	3,978	-3.9	-0.7
08	764	-0.7	2,839	-2.7	-4.9	4,846	2.9	3,629	-7.7	-3.9	20,845	6.8	3,961	-3.5	-0.4
09	1,015	11.4	2,836	-5.6	-0.1	5,614	0.7	3,860	-2.1	6.4	20,925	5.4	3,972	-3.1	0.3
10	1,022	1.4	2,896	-3.9	2.1	5,845	1.5	3,740	-4.1	-3.1	21,123	5.9	3,955	-2.9	-0.4
11	985	8.2	2,939	-2.9	1.5	5,531	2.1	3,719	-6.6	-0.6	21,122	4.1	3,914	-4.4	-1.0
12	858	-0.8	3,043	5.9	3.5	4,600	-1.3	3,740	-3.8	0.6	20,988	4.1	3,905	-4.6	-0.2
13/01	866	14.6	2,871	-0.8	-5.6	5,607	-6.8	3,698	-2.9	-1.1	21,163	1.9	3,878	-4.7	-0.7
02	1,051	10.3	2,985	2.7	4.0	5,365	-5.8	3,683	-4.9	-0.4	21,122	-0.4	3,892	-4.0	0.4
03	1,281	7.5	2,965	1.5	-0.7	5,670	-4.7	3,705	-3.3	0.6	20,760	-1.7	3,891	-3.8	0.0
04	1,071	17.8	3,001	0.0	1.2	5,561	-5.7	3,802	-1.8	2.6	20,369	-3.8	3,861	-4.1	-0.8
05	1,021	12.9	2,808	-2.4	-6.4	5,118	-5.9	3,627	-1.0	-4.6	19,982	-4.9	3,847	-3.4	-0.4
06	1,119	6.0	2,908	1.5	3.6	5,195	-7.0	3,787	-2.0	4.4	19,782	-5.2	3,865	-3.5	0.5
07	1,074	2.8	3,002	0.5	3.2	5,151	-10.5	3,666	-2.9	-3.2	19,577	-6.1	3,861	-2.9	-0.1
08	809	5.9	2,767	-2.5	-7.8	4,749	-2.0	3,861	6.4	5.3	19,563	-6.2	3,870	-2.3	0.2
09	1,089	7.3	2,964	4.5	7.1	5,321	-5.2	3,714	-3.8	-3.8	19,624	-6.2	3,881	-2.3	0.3
10	972	-4.9	3,008	3.9	1.5	6,562	12.3	3,790	1.3	2.0	18,405	-12.9	3,903	-1.3	0.6
11	957	-2.8	2,850	-3.0	-5.2	5,522	-0.2	3,684	-0.9	-2.8	18,790	-11.0	3,896	-0.4	-0.2
12	935	9.0	2,849	-6.4	0.0	4,802	4.4	3,735	-0.1	1.4	18,726	-10.8	3,897	-0.2	0.0
14/01	887	2.4	2,885	0.5	1.3	5,574	-0.6	3,667	-0.8	-1.8	18,998	-10.2	3,870	-0.2	-0.7
02	984	-6.4	3,013	1.0	4.4	5,118	-4.6	3,644	-1.1	-0.6	19,133	-9.4	3,829	-1.6	-1.1
03	1,205	-5.9	2,935	-1.0	-2.6	5,733	1.1	3,596	-3.0	-1.3	18,926	-8.8	3,805	-2.2	-0.6
04	927	-13.4	2,922	-2.6	-0.5	5,636	1.3	3,723	-2.1	3.5	18,749	-8.0	3,773	-2.3	-0.8
05	886	-13.2	2,805	-0.1	-4.0	5,400	5.5	3,613	-0.4	-3.0	18,765	-6.1	3,772	-2.0	0.0
06	1,034	-7.6	2,910	0.1	3.7	5,148	-0.9	3,625	-4.3	0.3	18,473	-6.6	3,771	-2.4	0.0
07	910	-15.3	2,866	-4.5	-1.5	5,209	1.1	3,632	-0.9	0.2	18,334	-6.3	3,782	-2.1	0.3
08	761	-5.9	2,891	4.5	0.9	4,790	0.9	3,536	-8.4	-2.7	18,430	-5.8	3,761	-2.8	-0.5
09	966	-11.3	2,980	0.5	3.1	5,651	6.2	3,568	-3.9	0.9	18,632	-5.1	3,752	-3.3	-0.2
10	862	-11.3	2,882	-4.2	-3.3	5,722	-12.8	3,548	-6.4	-0.6	18,807	2.2	3,743	-4.1	-0.2
11	956	-0.1	2,958	3.8	2.7	5,628	1.9	3,654	-0.8	3.0	18,966	0.9	3,762	-3.4	0.5
12	830	-11.2	2,927	2.7	-1.1	4,678	-2.6	3,616	-3.2	-1.0	18,854	0.7	3,722	-4.5	-1.1
15/01	758	-14.5	3,054	5.8	4.3	5,599	0.4	3,665	-0.1	1.3	19,271	1.4	3,723	-3.8	0.0
02	1,046	6.3	3,173	5.3	3.9	5,746	12.3	3,653	0.3	-0.3	19,567	2.3	3,738	-2.4	0.4
03	1,189	-1.3	3,063	4.4	-3.5	6,128	6.9	3,611	0.4	-1.2	19,454	2.8	3,750	-1.5	0.3
04	988	6.6	2,970	1.6	-3.0	5,977	6.1	3,556	-4.5	-1.5	19,383	3.4	3,684	-2.4	-1.8
05	1,031	16.4	2,967	5.8	-0.1	5,639	4.4	3,546	-1.9	-0.3	19,352	3.1	3,664	-2.9	-0.5
06	1,141	10.3	3,038	4.4	2.4	5,493	6.7	3,666	1.1	3.4	19,076	3.3	3,684	-2.3	0.5
07	1,003	10.2	2,916	1.7	-4.0	5,515	5.9	3,573	-1.6	-2.5	19,144	4.4	3,669	-3.0	-0.4
08	923	21.3	2,917	0.9	0.0	4,943	3.2	3,571	1.0	-0.1	18,837	2.2	3,694	-1.8	0.7
09	958	-0.8	3,188	7.0	9.3	5,589	-1.1	3,625	1.6	1.5	19,189	3.0	3,698	-1.4	0.1
10	1,066	23.7	2,986	3.6	-6.3	5,858	2.4	3,637	2.5	0.3	19,251	2.4	3,708	-0.9	0.3
11	1,123	17.5	2,916	-1.4	-2.3	5,407	-3.9	3,654	0.0	0.5	19,025	0.3	3,734	-0.7	0.7
12	927	11.7	2,946	0.7	1.0	4,553	-2.7	3,607	-0.3	-1.3	18,767	-0.5	3,728	0.2	-0.2
16/01	969	27.8	3,117	2.1	5.8	5,791	3.4	3,571	-2.6	-1.0	18,986	-1.5	3,711	-0.3	-0.5
02	1,247	19.2	3,047	-4.0	-2.2	5,506	-4.2	3,689	1.0	3.3	18,974	-3.0	3,738	0.0	0.7
03	1,263	6.2	3,027	-1.2	-0.7	5,473	-10.7	3,598	-0.4	-2.5	18,678	-4.0	3,777	0.7	1.1
04	1,161	17.5	2,998	0.9	-1.0	5,370	-10.2	3,690	3.8	2.6	18,385	-5.1	3,765	2.2	-0.3
05	1,142	10.8	2,960	-0.2	-1.3	5,101	-9.5	3,723	5.0	0.9	18,047	-6.7	3,782	3.2	0.4
06	1,131	-0.9	2,921	-3.9	-1.3	4,961	-9.7	3,745	2.2	0.6	17,881	-6.3	3,814	3.5	0.9
07	1,205	20.1	3,068	5.2	5.0	5,167	-6.3	3,731	4.4	-0.4	17,647	-7.8	3,860	5.2	1.2
08	889	-3.7	3,092	6.0	0.8	4,299	-13.0	3,774	5.7	1.1	17,514	-7.0	3,867	4.7	0.2
09	1,054	10.0	3,091	-3.0	0.0	5,105	-8.7	3,762	3.8	-0.3	17,644	-8.1	3,878	4.9	0.3
10	1,151	8.0	3,060	2.5	-1.0	5,420	-7.5	3,698	1.7	-1.7	17,771	-7.7	3,891	4.9	0.3
11	1,026	-8.6	3,016	3.4	-1.4	4,989	-7.7	3,652	-0.1	-1.2	18,008	-5.3	3,878	3.8	-0.3
12	957	3.2	2,988	1.4	-0.9	4,606	1.2	3,698	2.5	1.3	17,938	-4.4	3,874	3.9	-0.1
17/01	847	-12.6	3,103	-0.4	3.9	5,226	-9.8	3,791	6.2	2.5	18,347	-3.4	3,883	4.6	0.2
02	1,173	-5.9	3,083	1.2	-0.7	5,288	-4.0	3,803	3.1	0.3	18,477	-2.6	3,890	4.1	0.2
03	1,300	2.9	3,063	1.2	-0.6	5,405	-1.2	3,848	7.0	1.2	18,224	-2.4	3,952	4.6	1.6
04	1,126	-3.0	3,010	0.4	-1.7	5,489	2.2	3,875	5.0	0.7	18,163	-1.2	3,940	4.7	-0.3

