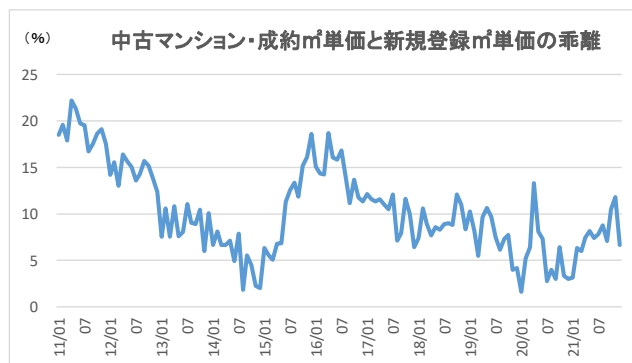
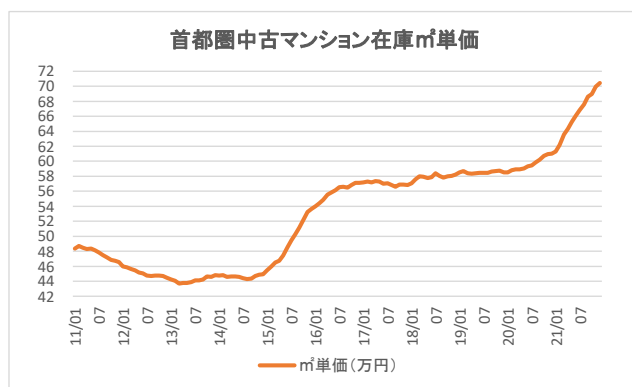
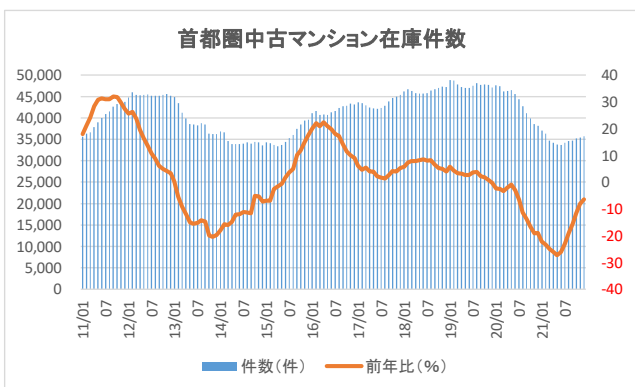
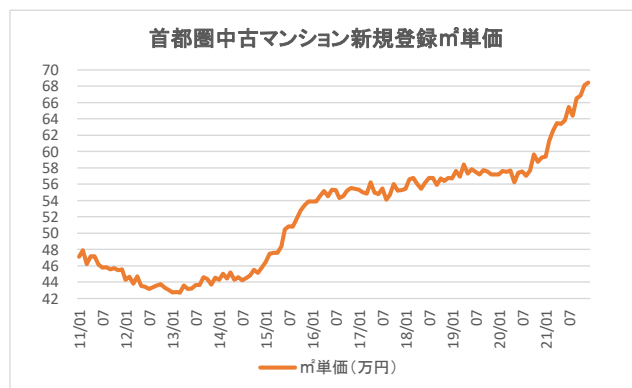
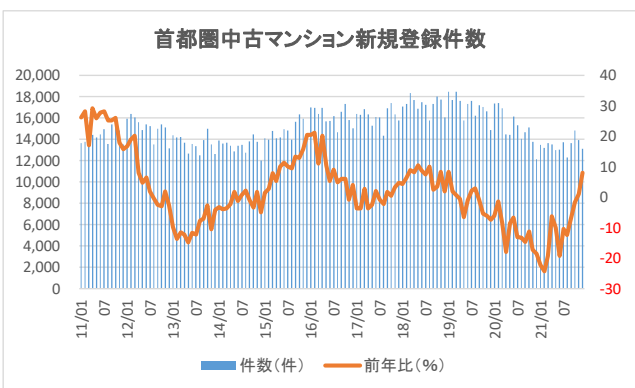
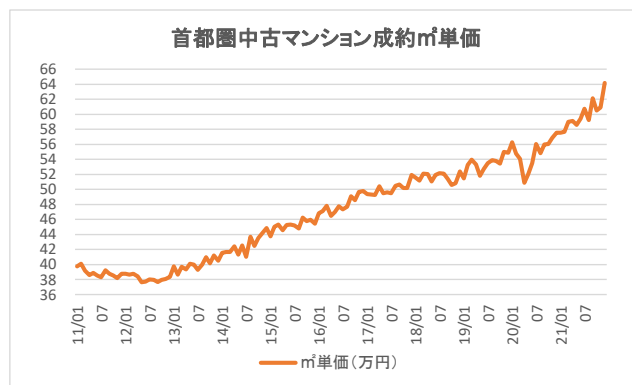
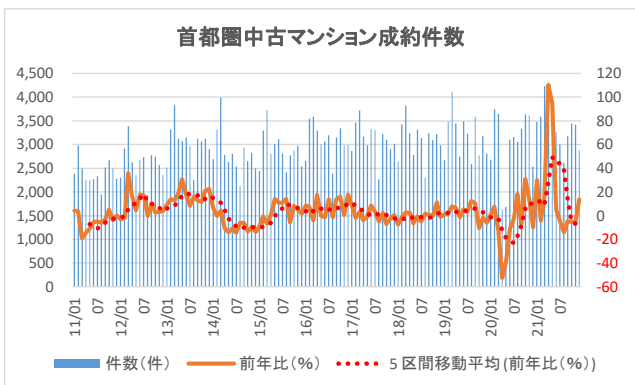


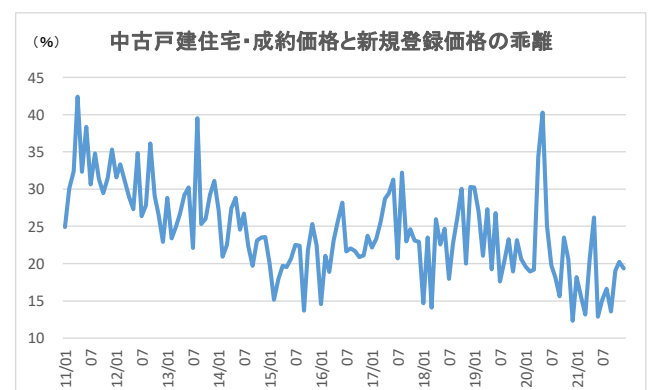
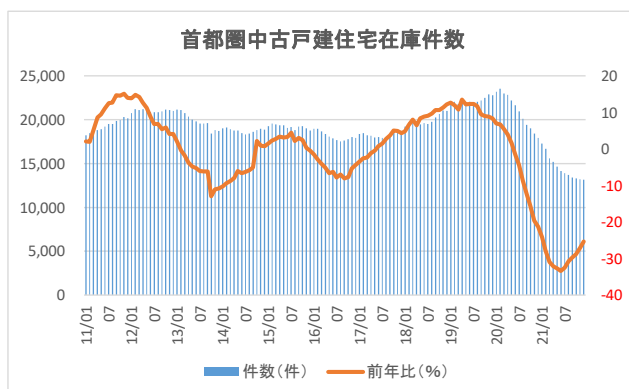
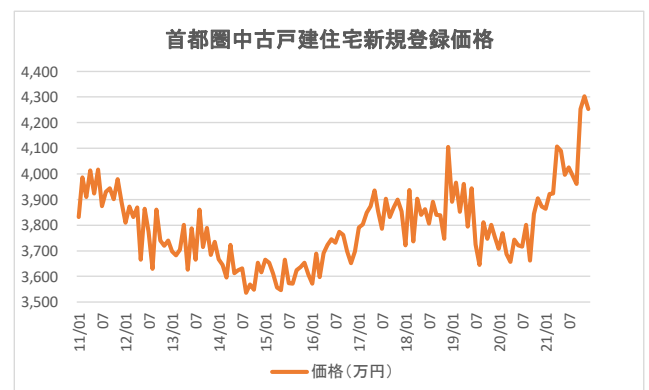
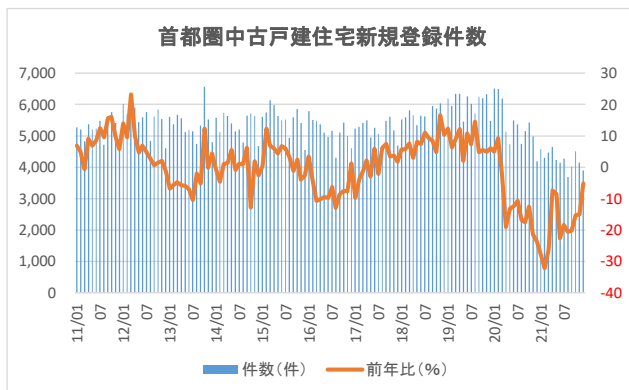
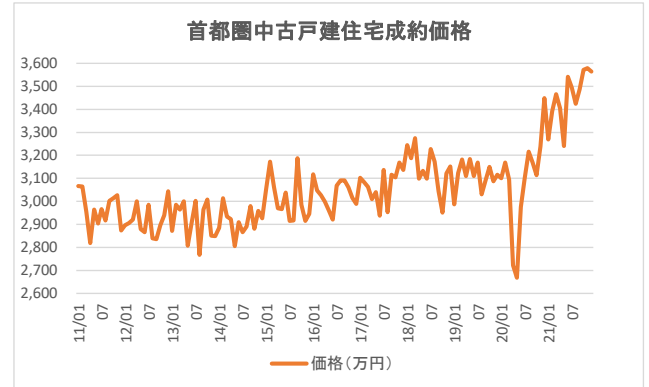
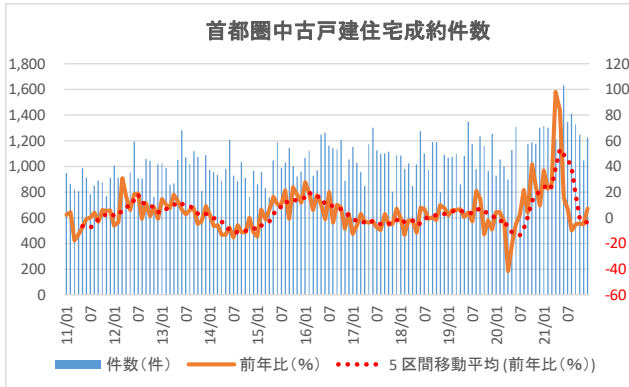
1. 中古マンション

- ・直近の成約件数は、新型コロナウイルス感染拡大前以上の水準で推移。
- ・直近の新規登録・在庫件数は減少幅は縮小、新規登録件数は前年比プラスに転じる。
- ・成約・新規登録・在庫㎡単価ともに上昇続く。



2. 中古戸建住宅

- ・直近の成約件数は、新型コロナウイルス感染拡大前以上の水準で推移。
- ・直近の新規登録は減少幅が縮小して前年並みに、在庫件数は減少傾向続く。
- ・成約・新規登録・在庫価格とともに上昇傾向。



基本データ① 中古マンション

年/月	■成約状況					■新規登録状況					■在庫状況				
	件数 (件)	㎡単価 (万円)	前年比(%)		前月比(%)	件数 (件)	㎡単価 (万円)	前年比(%)		前月比(%)	件数 (件)	㎡単価 (万円)	前年比(%)		前月比(%)
			前年比(%)	前年比(%)				前年比(%)	前年比(%)						
11/01	2,383	4.2	39.78	3.1	-1.2	13,661	26.2	47.14	4.0	0.2	35,645	18.0	48.36	4.6	0.1
02	2,985	3.9	40.08	3.9	0.7	13,786	28.2	47.93	5.4	1.7	36,360	21.1	48.72	5.1	0.7
03	2,495	-19.2	39.18	1.3	-2.2	13,364	17.1	46.20	0.1	-3.6	36,654	24.1	48.46	3.9	-0.5
04	2,258	-14.4	38.61	-1.1	-1.5	14,438	29.2	47.18	1.9	2.1	37,855	28.3	48.29	3.3	-0.3
05	2,251	-10.7	38.88	0.6	0.7	14,198	25.9	47.16	2.2	-0.1	38,992	30.8	48.33	2.4	0.1
06	2,270	-5.3	38.54	0.1	-0.9	14,447	27.8	46.14	1.1	-2.2	40,016	31.3	48.15	1.5	-0.4
07	2,334	-5.1	38.32	-2.9	-0.6	14,943	28.2	45.80	-2.0	-0.7	40,847	31.0	47.81	0.0	-0.7
08	1,943	-6.0	39.25	-0.5	2.4	13,577	25.2	45.81	-0.3	0.0	41,456	31.0	47.47	-0.3	-0.7
09	2,513	-3.6	38.77	-2.2	-1.2	15,383	25.2	45.56	-2.1	-0.5	42,605	32.0	47.20	-1.3	-0.6
10	2,670	4.9	38.53	-2.6	-0.6	15,850	26.1	45.72	-2.3	0.4	43,219	31.8	46.87	-2.5	-0.7
11	2,497	-3.9	38.18	-5.4	-0.9	14,834	17.9	45.47	-3.1	-0.5	43,734	29.9	46.71	-3.0	-0.3
12	2,272	0.3	38.76	-3.7	1.5	13,543	15.8	45.56	-3.2	0.2	43,728	27.4	46.56	-3.6	-0.3
12/01	2,305	-3.3	38.78	-2.5	0.0	15,939	16.7	44.28	-6.1	-2.8	44,771	25.6	45.99	-4.9	-1.2
02	2,919	-2.2	38.66	-3.5	-0.3	16,395	18.9	44.67	-6.8	0.9	45,930	26.3	45.84	-5.9	-0.3
03	3,388	35.8	38.76	-1.1	0.3	16,057	20.2	43.80	-5.2	-2.0	45,328	23.7	45.61	-5.9	-0.5
04	2,628	16.4	38.41	-0.5	-0.9	15,608	8.1	44.70	-5.3	2.1	45,249	19.5	45.48	-5.8	-0.3
05	2,353	4.5	37.64	-3.2	-2.0	14,859	4.7	43.53	-7.7	-2.6	45,403	16.4	45.18	-6.5	-0.7
06	2,672	17.7	37.74	-2.1	0.3	15,384	6.5	43.42	-5.9	-0.2	45,477	13.6	45.06	-6.4	-0.3
07	2,736	17.2	38.02	-0.8	0.8	15,224	1.9	43.18	-5.7	-0.6	45,186	10.6	44.75	-6.4	-0.7
08	1,940	-0.2	37.98	-3.2	-0.1	13,526	-0.4	43.40	-5.3	0.5	45,152	8.9	44.71	-5.8	-0.1
09	2,775	10.4	37.67	-2.8	-0.8	14,999	-2.5	43.59	-4.3	0.4	45,148	6.0	44.77	-5.1	0.1
10	2,744	2.8	37.98	-1.4	0.8	15,395	-2.9	43.75	-4.3	0.4	45,321	4.9	44.76	-4.5	0.0
11	2,574	3.1	38.07	-0.3	0.2	15,119	1.9	43.33	-4.7	-1.0	45,549	4.2	44.68	-4.3	-0.2
12	2,363	4.0	38.34	-1.1	0.7	13,177	-2.7	43.08	-5.5	-0.6	45,157	3.3	44.46	-4.5	-0.5
13/01	2,517	9.2	39.75	2.5	3.7	14,373	-9.8	42.75	-3.5	-0.8	44,897	0.3	44.21	-3.9	-0.6
02	3,316	13.6	38.68	0.0	-2.7	14,159	-13.6	42.77	-4.3	0.0	43,446	-5.4	44.06	-3.9	-0.3
03	3,830	13.0	39.72	2.5	2.7	14,215	-11.5	42.71	-2.5	-0.1	41,157	-9.2	43.69	-4.2	-0.8
04	3,119	18.7	39.36	2.5	-0.9	13,705	-12.2	43.62	-2.4	2.1	39,850	-11.9	43.75	-3.8	0.1
05	3,076	30.7	40.11	6.6	1.9	12,658	-14.8	43.15	-0.9	-1.1	38,541	-15.1	43.77	-3.1	0.0
06	3,149	17.9	39.97	5.9	-0.4	13,580	-11.7	43.20	-0.5	0.1	38,422	-15.5	43.86	-2.7	0.2
07	2,965	8.4	39.31	3.4	-1.6	13,364	-12.2	43.65	1.1	1.0	38,252	-15.3	44.12	-1.4	0.6
08	2,250	16.0	40.01	5.3	1.8	12,493	-7.6	43.63	0.5	0.0	38,716	-14.3	44.14	-1.3	0.0
09	3,123	12.5	40.95	8.7	2.3	13,935	-7.1	44.60	2.3	2.2	38,484	-14.8	44.24	-1.2	0.2
10	3,066	11.7	40.18	5.8	-1.9	14,984	-2.7	44.38	1.4	-0.5	36,303	-19.9	44.65	-0.2	0.9
11	3,121	21.3	41.23	8.3	2.6	13,537	-10.5	43.70	0.9	-1.5	36,215	-20.5	44.59	-0.2	-0.2
12	2,900	22.7	40.48	5.6	-1.8	12,634	-4.1	44.55	3.4	1.9	36,249	-19.7	44.83	0.8	0.5
14/01	2,688	6.8	41.53	4.5	2.6	13,892	-3.3	44.30	3.6	-0.5	36,832	-18.0	44.77	1.3	-0.1
02	3,311	-0.2	41.68	7.8	0.3	13,607	-3.9	45.06	5.4	1.7	36,612	-15.7	44.83	1.8	0.1
03	3,994	4.3	41.66	4.9	0.0	13,696	-3.7	44.44	4.0	-1.4	34,550	-16.1	44.57	2.0	-0.6
04	2,785	-10.7	42.40	7.7	1.8	13,408	-2.2	45.22	3.7	1.8	33,909	-14.9	44.63	2.0	0.1
05	2,638	-14.2	41.34	3.1	-2.5	12,879	1.7	44.29	2.7	-2.0	33,842	-12.2	44.64	2.0	0.0
06	2,812	-10.7	42.52	6.4	2.9	13,415	-1.2	44.61	3.3	0.7	33,848	-11.9	44.56	1.6	-0.2
07	2,532	-14.6	41.01	4.3	-3.6	13,471	0.8	44.23	1.3	-0.8	34,008	-11.1	44.40	0.6	-0.4
08	2,118	-5.9	43.69	9.2	6.5	12,769	2.2	44.50	2.0	0.6	34,323	-11.3	44.28	0.3	-0.3
09	2,938	-5.9	42.46	3.7	-2.8	13,801	-1.0	44.81	0.5	0.7	33,964	-11.7	44.37	0.3	0.2
10	2,655	-13.4	43.53	8.3	2.5	14,470	-3.4	45.49	2.5	1.5	34,431	-5.2	44.71	0.1	0.8
11	2,830	-9.3	44.15	7.1	1.4	13,766	1.7	45.14	3.3	-0.8	34,283	-5.3	44.89	0.7	0.4
12	2,497	-13.9	44.87	10.9	1.6	12,011	-4.9	45.77	2.7	1.4	33,617	-7.3	44.96	0.3	0.1
15/01	2,440	-9.2	43.73	5.3	-2.6	14,098	1.5	46.50	5.0	1.6	34,258	-7.0	45.43	1.5	1.1
02	3,292	-0.6	45.00	8.0	2.9	13,982	2.8	47.48	5.4	2.1	34,065	-7.0	45.98	2.6	1.2
03	3,728	-6.7	45.31	8.7	0.7	14,775	7.9	47.60	7.1	0.2	33,661	-2.6	46.50	4.3	1.1
04	2,808	0.8	44.55	5.1	-1.7	14,116	5.3	47.58	5.2	0.0	33,363	-1.6	46.75	4.7	0.5
05	3,008	14.0	45.28	9.5	1.6	14,183	10.1	48.37	9.2	1.7	33,645	-0.6	47.41	6.2	1.4
06	3,114	10.7	45.33	6.6	0.1	14,945	11.4	50.45	13.1	4.3	34,431	1.7	48.55	9.0	2.4
07	2,808	10.9	45.20	10.2	-0.3	14,820	10.0	50.87	15.0	0.8	35,274	3.7	49.44	11.4	1.8
08	2,415	14.0	44.82	2.6	-0.8	13,981	9.5	50.81	14.2	-0.1	36,039	5.0	50.28	13.5	1.7
09	2,772	-5.7	46.27	9.0	3.2	15,644	13.4	51.75	15.5	1.9	37,394	10.1	51.16	15.3	1.8
10	2,877	8.4	45.80	5.2	-1.0	16,333	12.9	52.75	16.0	1.9	38,445	11.7	52.15	16.6	1.9
11	2,971	5.0	45.98	4.2	0.4	15,945	15.8	53.40	18.3	1.2	39,408	14.9	53.23	18.6	2.1
12	2,543	1.8	45.44	1.3	-1.2	14,474	20.5	53.89	17.8	0.9	39,566	17.7	53.63	19.3	0.8
16/01	2,655	8.8	46.84	7.1	3.1	16,985	20.5	53.91	15.9	0.0	41,126	20.0	53.97	18.8	0.6
02	3,539	7.5	47.12	4.7	0.6	16,940	21.2	53.88	13.5	-0.1	41,555	22.0	54.38	18.3	0.8
03	3,590	-3.7	47.78	5.4	1.4	16,394	11.0	54.58	14.7	1.3	40,675	20.8	54.88	18.0	0.9
04	3,294	17.3	46.50	4.4	-2.7	16,971	20.2	55.19	16.0	1.1	40,812	22.3	55.58	18.9	1.3
05	3,001	-0.2	46.97	3.7	1.0	15,671	10.5	54.51	12.7	-1.2	40,644	20.8	55.86	17.8	0.5
06	3,069	-1.4	47.77	5.4	1.7	15,749	5.4	55.34	9.7	1.5	41,253	19.8	56.12	15.6	0.5

基本データ① 中古マンション

年/月	■成約状況					■新規登録状況					■在庫状況				
	件数 (件)	前年比(%)	㎡単価 (万円)	前年比(%)	前月比(%)	件数 (件)	前年比(%)	㎡単価 (万円)	前年比(%)	前月比(%)	件数 (件)	前年比(%)	㎡単価 (万円)	前年比(%)	前月比(%)
07	3,190	13.6	47.33	4.7	-0.9	16,174	9.1	55.29	8.7	-0.1	41,638	18.0	56.56	14.4	0.8
08	2,384	-1.3	47.69	6.4	0.8	14,663	4.9	54.30	6.9	-1.8	42,278	17.3	56.59	12.6	0.1
09	3,150	13.6	49.06	6.0	2.9	16,603	6.1	54.53	5.4	0.4	42,704	14.2	56.48	10.4	-0.2
10	3,339	16.1	48.58	6.1	-1.0	17,313	6.0	55.22	4.7	1.3	42,819	11.4	56.85	9.0	0.7
11	2,985	0.5	49.68	8.0	2.3	15,821	-0.8	55.53	4.0	0.6	43,296	9.9	57.14	7.4	0.5
12	2,993	17.7	49.78	9.5	0.2	15,052	4.0	55.42	2.8	-0.2	43,141	9.0	57.15	6.6	0.0
17/01	2,861	7.8	49.35	5.4	-0.9	16,362	-3.7	55.35	2.7	-0.1	43,631	6.1	57.19	6.0	0.1
02	3,461	-2.2	49.29	4.6	-0.1	16,311	-3.7	54.99	2.0	-0.7	43,478	4.6	57.30	5.4	0.2
03	3,719	3.6	49.28	3.2	0.0	16,830	2.7	54.86	0.5	-0.2	42,877	5.4	57.19	4.2	-0.2
04	3,163	-4.0	50.40	8.4	2.3	16,358	-3.6	56.24	1.9	2.5	42,423	3.9	57.36	3.2	0.3
05	2,983	-0.6	49.49	5.4	-1.8	15,278	-2.5	54.93	0.8	-2.3	42,237	3.9	57.30	2.6	-0.1
06	3,333	8.6	49.61	3.8	0.2	16,079	2.1	54.82	-0.9	-0.2	42,135	2.1	57.00	1.6	-0.5
07	3,304	3.6	49.48	4.5	-0.3	16,040	-0.8	55.47	0.3	1.2	42,353	1.7	57.05	0.9	0.1
08	2,265	-5.0	50.50	5.9	2.1	14,326	-2.3	54.10	-0.4	-2.5	42,842	1.3	56.82	0.4	-0.4
09	3,222	2.3	50.67	3.3	0.3	16,904	1.8	54.68	0.3	1.1	43,843	2.7	56.61	0.2	-0.4
10	3,103	-7.1	50.16	3.3	-1.0	17,391	0.5	56.00	1.4	2.4	44,619	4.2	56.87	0.0	0.5
11	2,904	-2.7	50.20	1.0	0.1	16,350	3.3	55.20	-0.6	-1.4	44,994	3.9	56.91	-0.4	0.1
12	3,011	0.6	51.94	4.3	3.5	15,759	4.7	55.28	-0.3	0.1	45,380	5.2	56.85	-0.5	-0.1
18/01	2,641	-7.7	51.60	4.6	-0.6	17,062	4.3	55.43	0.1	0.3	46,155	5.8	57.05	-0.2	0.4
02	3,424	-1.1	51.19	3.9	-0.8	17,335	6.3	56.62	3.0	2.1	46,675	7.4	57.60	0.5	1.0
03	3,819	2.7	52.11	5.7	1.8	18,325	8.9	56.76	3.5	0.2	46,240	7.8	58.00	1.4	0.7
04	3,237	2.3	52.04	3.3	-0.1	17,704	8.2	56.03	-0.4	-1.3	45,746	7.8	57.92	1.0	-0.2
05	2,785	-6.6	51.07	3.2	-1.9	16,877	10.5	55.45	0.9	-1.0	45,713	8.2	57.74	0.8	-0.3
06	3,317	-0.5	51.90	4.6	1.6	17,477	8.7	56.20	2.5	1.4	45,712	8.5	57.89	1.6	0.3
07	3,139	-5.0	52.13	5.4	0.4	17,242	7.5	56.77	2.3	1.0	45,780	8.1	58.38	2.3	0.8
08	2,303	1.7	52.10	3.2	0.0	15,768	10.1	56.79	5.0	0.0	46,376	8.2	58.03	2.1	-0.6
09	3,244	0.7	51.39	1.4	-1.4	17,323	2.5	55.92	2.3	-1.5	46,701	6.5	57.83	2.2	-0.4
10	3,096	-0.2	50.57	0.8	-1.6	18,008	3.5	56.69	1.2	1.4	46,971	5.3	57.99	2.0	0.3
11	3,225	11.1	50.82	1.2	0.5	17,716	8.4	56.42	2.2	-0.5	47,258	5.0	58.08	2.1	0.2
12	2,987	-0.8	52.41	0.9	3.1	16,064	1.9	56.79	2.7	0.7	47,150	3.9	58.24	2.4	0.3
19/01	2,667	1.0	51.46	-0.3	-1.8	18,479	8.3	56.73	2.3	-0.1	48,796	5.7	58.50	2.5	0.4
02	3,484	1.8	53.25	4.0	3.5	17,677	2.0	57.61	1.7	1.5	48,688	4.3	58.67	1.9	0.3
03	4,117	7.8	53.96	3.6	1.3	18,451	0.7	56.92	0.3	-1.2	47,784	3.3	58.40	0.7	-0.5
04	3,440	6.3	53.29	2.4	-1.3	17,617	-0.5	58.43	4.3	2.7	47,191	3.2	58.34	0.7	-0.1
05	2,749	-1.3	51.80	1.4	-2.8	15,776	-6.5	57.30	3.3	-1.9	46,951	2.7	58.39	1.1	0.1
06	3,490	5.2	52.75	1.6	1.8	17,301	-1.0	57.86	2.9	1.0	46,962	2.7	58.46	1.0	0.1
07	3,233	3.0	53.51	2.6	1.4	17,627	2.2	57.52	1.3	-0.6	47,480	3.7	58.44	0.1	0.0
08	2,584	12.2	53.88	3.4	0.7	16,228	2.9	57.18	0.7	-0.6	48,157	3.8	58.45	0.7	0.0
09	3,589	10.6	53.79	4.7	-0.2	17,189	-0.8	57.72	3.2	0.9	47,660	2.1	58.63	1.4	0.3
10	2,771	-10.5	53.45	5.7	-0.6	17,033	-5.4	57.58	1.6	-0.2	47,805	1.8	58.69	1.2	0.1
11	3,175	-1.6	55.01	8.2	2.9	16,640	-6.1	57.20	1.4	-0.7	47,699	0.9	58.73	1.1	0.1
12	2,810	-5.9	54.89	4.7	-0.2	14,873	-7.4	57.17	0.7	-0.1	47,051	-0.2	58.51	0.5	-0.4
20/01	2,680	0.5	56.29	9.4	2.6	17,351	-6.1	57.20	0.8	0.0	47,624	-2.4	58.51	0.0	0.0
02	3,749	7.6	54.76	2.8	-2.7	17,421	-1.4	57.60	0.0	0.7	47,423	-2.6	58.80	0.2	0.5
03	3,642	-11.5	54.05	0.2	-1.3	16,910	-8.4	57.51	1.0	-0.1	46,192	-3.3	58.94	0.9	0.2
04	1,629	-52.6	50.88	-4.5	-5.9	14,445	-18.0	57.66	-1.3	0.3	46,251	-2.0	58.90	1.0	-0.1
05	1,692	-38.5	52.03	0.4	2.3	14,432	-8.5	56.25	-1.8	-2.4	46,507	-0.9	59.04	1.1	0.2
06	3,107	-11.0	53.48	1.4	2.8	16,143	-6.7	57.39	-0.8	2.0	45,555	-3.0	59.32	1.5	0.5
07	3,156	-2.4	56.03	4.7	4.8	15,319	-13.1	57.57	0.1	0.3	44,350	-6.6	59.47	1.8	0.3
08	3,053	18.2	54.85	1.8	-2.1	14,069	-13.3	57.04	-0.2	-0.9	42,731	-11.3	59.87	2.4	0.7
09	3,328	-7.3	55.98	4.1	2.1	14,656	-14.7	57.67	-0.1	1.1	41,137	-13.7	60.21	2.7	0.6
10	3,636	31.2	56.04	4.8	0.1	15,106	-11.3	59.63	3.6	3.4	39,829	-16.7	60.74	3.5	0.9
11	3,620	14.0	56.87	3.4	1.5	13,773	-17.2	58.76	2.7	-1.5	38,520	-19.2	60.95	3.8	0.3
12	2,533	-9.9	57.53	4.8	1.1	12,125	-18.5	59.25	3.6	0.8	38,173	-18.9	60.99	4.2	0.1
21/01	3,480	29.9	57.57	2.3	0.1	13,480	-22.3	59.39	3.8	0.3	37,054	-22.2	61.28	4.7	0.5
02	3,587	-4.3	57.67	5.3	0.2	13,192	-24.3	61.31	6.4	3.2	36,323	-23.4	62.17	5.7	1.5
03	4,228	16.1	59.02	9.2	2.3	13,648	-19.3	62.56	8.8	2.0	34,701	-24.9	63.57	7.9	2.2
04	3,428	110.4	59.10	16.1	0.1	13,539	-6.3	63.49	10.1	1.5	34,184	-26.1	64.35	9.3	1.2
05	3,297	94.9	58.59	12.6	-0.9	13,003	-9.9	63.36	12.6	-0.2	33,801	-27.3	65.24	10.5	1.4
06	3,262	5.0	59.42	11.1	1.4	13,049	-19.2	63.81	11.2	0.7	33,641	-26.2	66.07	11.4	1.3
07	3,002	-4.9	60.71	8.4	2.2	13,723	-10.4	65.45	13.7	2.6	34,159	-23.0	66.80	12.3	1.1
08	2,615	-14.3	59.20	7.9	-2.5	12,319	-12.4	64.38	12.9	-1.6	34,594	-19.0	67.57	12.9	1.2
09	3,176	-4.6	62.13	11.0	4.9	13,637	-7.0	66.53	15.4	3.3	34,742	-15.5	68.60	13.9	1.5
10	3,440	-5.4	60.49	7.9	-2.6	14,842	-1.7	66.84	12.1	0.5	35,216	-11.6	68.96	13.5	0.5
11	3,416	-5.6	60.92	7.1	0.7	13,931	1.1	68.10	15.9	1.9	35,389	-8.1	69.97	14.8	1.5
12	2,881	13.7	64.17	11.6	5.3	13,111	8.1	68.45	15.6	0.5	35,718	-6.4	70.44	15.5	0.7

基本データ② 中古戸建住宅

* 2021年1月度より、戸建住宅の用途地域が未設定・無指定の物件について集計対象から除外する等の集計条件の変更を行っているため、□□
同年1月度以降の前年比及び前月比の数値は新たな集計条件に基づき算出している(既に公表している数値と比較した前年・前月比ではない)。

年/月	■成約状況					■新規登録状況					■在庫状況				
	件数 (件)	価格 (万円)				件数 (件)	価格 (万円)				件数 (件)	価格 (万円)			
		前年比(%)	前年比(%)	前年比(%)	前月比(%)		前年比(%)	前年比(%)	前年比(%)	前月比(%)		前年比(%)	前年比(%)	前年比(%)	前月比(%)
11/01	807	2.2	3,067	7.4	-2.6	5,278	6.9	3,831	2.4	-1.7	18,236	2.0	4,168	1.9	-0.2
02	986	4.4	3,064	0.8	-0.1	5,199	4.9	3,987	6.1	4.1	18,483	1.9	4,187	2.9	0.5
03	911	-17.8	2,954	-3.1	-3.6	4,831	-0.6	3,910	2.1	-1.9	18,498	5.3	4,173	2.6	-0.3
04	781	-13.1	2,818	-2.5	-4.6	5,370	9.1	4,013	2.0	2.6	18,808	8.6	4,146	1.2	-0.7
05	851	-7.4	2,964	1.2	5.2	5,200	6.9	3,923	-1.6	-2.2	18,892	9.4	4,140	0.1	-0.1
06	892	-0.9	2,903	-1.5	-2.1	5,223	8.5	4,017	3.2	2.4	19,198	11.1	4,177	1.7	0.9
07	878	0.3	2,966	-2.6	2.2	5,477	12.5	3,874	-0.9	-3.5	19,531	12.5	4,141	0.4	-0.9
08	769	4.1	2,917	-0.4	-1.6	4,710	9.5	3,931	0.3	1.5	19,516	12.6	4,104	-0.8	-0.9
09	911	-3.0	3,003	-2.5	2.9	5,573	15.6	3,944	1.9	0.3	19,861	14.7	4,097	-1.2	-0.2
10	1,008	6.1	3,013	-0.2	0.3	5,758	16.1	3,901	-0.3	-1.1	19,938	14.6	4,075	-1.6	-0.5
11	910	5.4	3,027	0.1	0.5	5,417	9.9	3,979	-0.7	2.0	20,297	15.1	4,095	-1.9	0.5
12	865	5.6	2,874	-8.8	-5.1	4,662	5.8	3,889	-0.2	-2.3	20,155	14.0	4,093	-2.0	0.0
12/01	756	-6.3	2,896	-5.6	0.8	6,017	14.0	3,810	-0.5	-2.0	20,766	13.9	4,070	-2.4	-0.6
02	953	-3.3	2,905	-5.2	0.3	5,693	9.5	3,873	-2.9	1.7	21,216	14.8	4,056	-3.1	-0.3
03	1,192	30.8	2,921	-1.1	0.5	5,950	23.2	3,831	-2.0	-1.1	21,121	14.2	4,043	-3.1	-0.3
04	909	16.4	3,000	6.5	2.7	5,900	9.9	3,870	-3.6	1.0	21,181	12.6	4,025	-2.9	-0.5
05	904	6.2	2,879	-2.9	-4.1	5,438	4.6	3,665	-6.6	-5.3	21,010	11.2	3,984	-3.8	-1.0
06	1,056	18.4	2,866	-1.3	-0.4	5,584	6.9	3,864	-3.8	5.4	20,859	8.7	4,004	-4.1	0.5
07	1,045	19.0	2,986	0.7	4.2	5,753	5.0	3,774	-2.6	-2.3	20,859	6.8	3,978	-3.9	-0.7
08	764	-0.7	2,839	-2.7	-4.9	4,846	2.9	3,629	-7.7	-3.9	20,845	6.8	3,961	-3.5	-0.4
09	1,015	11.4	2,836	-5.6	-0.1	5,614	0.7	3,860	-2.1	6.4	20,925	5.4	3,972	-3.1	0.3
10	1,022	1.4	2,896	-3.9	2.1	5,845	1.5	3,740	-4.1	-3.1	21,123	5.9	3,955	-2.9	-0.4
11	985	8.2	2,939	-2.9	1.5	5,531	2.1	3,719	-6.6	-0.6	21,122	4.1	3,914	-4.4	-1.0
12	858	-0.8	3,043	5.9	3.5	4,600	-1.3	3,740	-3.8	0.6	20,988	4.1	3,905	-4.6	-0.2
13/01	866	14.6	2,871	-0.8	-5.6	5,607	-6.8	3,698	-2.9	-1.1	21,163	1.9	3,878	-4.7	-0.7
02	1,051	10.3	2,985	2.7	4.0	5,365	-5.8	3,683	-4.9	-0.4	21,122	-0.4	3,892	-4.0	0.4
03	1,281	7.5	2,965	1.5	-0.7	5,670	-4.7	3,705	-3.3	0.6	20,760	-1.7	3,891	-3.8	0.0
04	1,071	17.8	3,001	0.0	1.2	5,561	-5.7	3,802	-1.8	2.6	20,369	-3.8	3,861	-4.1	-0.8
05	1,021	12.9	2,808	-2.4	-6.4	5,118	-5.9	3,627	-1.0	-4.6	19,982	-4.9	3,847	-3.4	-0.4
06	1,119	6.0	2,908	1.5	3.6	5,195	-7.0	3,787	-2.0	4.4	19,782	-5.2	3,865	-3.5	0.5
07	1,074	2.8	3,002	0.5	3.2	5,151	-10.5	3,666	-2.9	-3.2	19,577	-6.1	3,861	-2.9	-0.1
08	809	5.9	2,767	-2.5	-7.8	4,749	-2.0	3,861	6.4	5.3	19,563	-6.2	3,870	-2.3	0.2
09	1,089	7.3	2,964	4.5	7.1	5,321	-5.2	3,714	-3.8	-3.8	19,624	-6.2	3,881	-2.3	0.3
10	972	-4.9	3,008	3.9	1.5	6,562	12.3	3,790	1.3	2.0	18,405	-12.9	3,903	-1.3	0.6
11	957	-2.8	2,850	-3.0	-5.2	5,522	-0.2	3,684	-0.9	-2.8	18,790	-11.0	3,896	-0.4	-0.2
12	935	9.0	2,849	-6.4	0.0	4,802	4.4	3,735	-0.1	1.4	18,726	-10.8	3,897	-0.2	0.0
14/01	887	2.4	2,885	0.5	1.3	5,574	-0.6	3,667	-0.8	-1.8	18,998	-10.2	3,870	-0.2	-0.7
02	984	-6.4	3,013	1.0	4.4	5,118	-4.6	3,644	-1.1	-0.6	19,133	-9.4	3,829	-1.6	-1.1
03	1,205	-5.9	2,935	-1.0	-2.6	5,733	1.1	3,596	-3.0	-1.3	18,926	-8.8	3,805	-2.2	-0.6
04	927	-13.4	2,922	-2.6	-0.5	5,636	1.3	3,723	-2.1	3.5	18,749	-8.0	3,773	-2.3	-0.8
05	886	-13.2	2,805	-0.1	-4.0	5,400	5.5	3,613	-0.4	-3.0	18,765	-6.1	3,772	-2.0	0.0
06	1,034	-7.6	2,910	0.1	3.7	5,148	-0.9	3,625	-4.3	0.3	18,473	-6.6	3,771	-2.4	0.0
07	910	-15.3	2,866	-4.5	-1.5	5,209	1.1	3,632	-0.9	0.2	18,334	-6.3	3,782	-2.1	0.3
08	761	-5.9	2,891	4.5	0.9	4,790	0.9	3,536	-8.4	-2.7	18,430	-5.8	3,761	-2.8	-0.5
09	966	-11.3	2,980	0.5	3.1	5,651	6.2	3,568	-3.9	0.9	18,632	-5.1	3,752	-3.3	-0.2
10	862	-11.3	2,882	-4.2	-3.3	5,722	-12.8	3,548	-6.4	-0.6	18,807	2.2	3,743	-4.1	-0.2
11	956	-0.1	2,958	3.8	2.7	5,628	1.9	3,654	-0.8	3.0	18,966	0.9	3,762	-3.4	0.5
12	830	-11.2	2,927	2.7	-1.1	4,678	-2.6	3,616	-3.2	-1.0	18,854	0.7	3,722	-4.5	-1.1
15/01	758	-14.5	3,054	5.8	4.3	5,599	0.4	3,665	-0.1	1.3	19,271	1.4	3,723	-3.8	0.0
02	1,046	6.3	3,173	5.3	3.9	5,746	12.3	3,653	0.3	-0.3	19,567	2.3	3,738	-2.4	0.4
03	1,189	-1.3	3,063	4.4	-3.5	6,128	6.9	3,611	0.4	-1.2	19,454	2.8	3,750	-1.5	0.3
04	988	6.6	2,970	1.6	-3.0	5,977	6.1	3,556	-4.5	-1.5	19,383	3.4	3,684	-2.4	-1.8
05	1,031	16.4	2,967	5.8	-0.1	5,639	4.4	3,546	-1.9	-0.3	19,352	3.1	3,664	-2.9	-0.5
06	1,141	10.3	3,038	4.4	2.4	5,493	6.7	3,666	1.1	3.4	19,076	3.3	3,684	-2.3	0.5
07	1,003	10.2	2,916	1.7	-4.0	5,515	5.9	3,573	-1.6	-2.5	19,144	4.4	3,669	-3.0	-0.4
08	923	21.3	2,917	0.9	0.0	4,943	3.2	3,571	1.0	-0.1	18,837	2.2	3,694	-1.8	0.7
09	958	-0.8	3,188	7.0	9.3	5,589	-1.1	3,625	1.6	1.5	19,189	3.0	3,698	-1.4	0.1
10	1,066	23.7	2,986	3.6	-6.3	5,858	2.4	3,637	2.5	0.3	19,251	2.4	3,708	-0.9	0.3
11	1,123	17.5	2,916	-1.4	-2.3	5,407	-3.9	3,654	0.0	0.5	19,025	0.3	3,734	-0.7	0.7
12	927	11.7	2,946	0.7	1.0	4,553	-2.7	3,607	-0.3	-1.3	18,767	-0.5	3,728	0.2	-0.2
16/01	969	27.8	3,117	2.1	5.8	5,791	3.4	3,571	-2.6	-1.0	18,986	-1.5	3,711	-0.3	-0.5
02	1,247	19.2	3,047	-4.0	-2.2	5,506	-4.2	3,689	1.0	3.3	18,974	-3.0	3,738	0.0	0.7
03	1,263	6.2	3,027	-1.2	-0.7	5,473	-10.7	3,598	-0.4	-2.5	18,678	-4.0	3,777	0.7	1.1
04	1,161	17.5	2,998	0.9	-1.0	5,370	-10.2	3,690	3.8	2.6	18,385	-5.1	3,765	2.2	-0.3
05	1,142	10.8	2,960	-0.2	-1.3	5,101	-9.5	3,723	5.0	0.9	18,047	-6.7	3,782	3.2	0.4
06	1,131	-0.9	2,921	-3.9	-1.3	4,961	-9.7	3,745	2.2	0.6	17,881	-6.3	3,814	3.5	0.9

基本データ② 中古戸建住宅

* 2021年1月度より、戸建住宅の用途地域が未設定・無指定の物件について集計対象から除外する等の集計条件の変更を行っているため、□□
同年1月度以降の前年比及び前月比の数値は新たな集計条件に基づき算出している(既に公表している数値と比較した前年比・前月比ではない)。

年/月	■成約状況					■新規登録状況					■在庫状況				
	件数 (件)	価格 (万円)			前月比(%)	件数 (件)	価格 (万円)			前月比(%)	件数 (件)	価格 (万円)			
		前年比(%)	前年比(%)	前年比(%)			前年比(%)	前年比(%)	前年比(%)			前年比(%)	前年比(%)	前年比(%)	
07	1,205	20.1	3,068	5.2	5.0	5,167	-6.3	3,731	4.4	-0.4	17,647	-7.8	3,860	5.2	1.2
08	889	-3.7	3,092	6.0	0.8	4,299	-13.0	3,774	5.7	1.1	17,514	-7.0	3,867	4.7	0.2
09	1,054	10.0	3,091	-3.0	0.0	5,105	-8.7	3,762	3.8	-0.3	17,644	-8.1	3,878	4.9	0.3
10	1,151	8.0	3,060	2.5	-1.0	5,420	-7.5	3,698	1.7	-1.7	17,771	-7.7	3,891	4.9	0.3
11	1,026	-8.6	3,016	3.4	-1.4	4,989	-7.7	3,652	-0.1	-1.2	18,008	-5.3	3,878	3.8	-0.3
12	957	3.2	2,988	1.4	-0.9	4,606	1.2	3,698	2.5	1.3	17,938	-4.4	3,874	3.9	-0.1
17/01	847	-12.6	3,103	-0.4	3.9	5,226	-9.8	3,791	6.2	2.5	18,347	-3.4	3,883	4.6	0.2
02	1,173	-5.9	3,083	1.2	-0.7	5,288	-4.0	3,803	3.1	0.3	18,477	-2.6	3,890	4.1	0.2
03	1,300	2.9	3,063	1.2	-0.6	5,405	-1.2	3,848	7.0	1.2	18,224	-2.4	3,952	4.6	1.6
04	1,126	-3.0	3,010	0.4	-1.7	5,489	2.2	3,875	5.0	0.7	18,163	-1.2	3,940	4.7	-0.3
05	1,099	-3.8	3,040	2.7	1.0	4,947	-3.0	3,936	5.7	1.6	17,957	-0.5	3,991	5.5	1.3
06	1,103	-2.5	2,937	0.6	-3.4	5,255	5.9	3,855	2.9	-2.0	18,020	0.8	4,027	5.6	0.9
07	1,115	-7.5	3,137	2.3	6.8	5,057	-2.1	3,786	1.5	-1.8	17,898	1.4	3,983	3.2	-1.1
08	804	-9.6	2,953	-4.5	-5.9	4,565	6.2	3,904	3.4	3.1	18,010	2.8	3,968	2.6	-0.4
09	1,087	3.1	3,116	0.8	5.5	5,483	7.4	3,832	1.9	-1.8	18,303	3.7	3,965	2.2	-0.1
10	1,086	-5.6	3,105	1.5	-0.3	5,606	3.4	3,869	4.6	1.0	18,666	5.0	3,956	1.7	-0.2
11	979	-4.6	3,168	5.0	2.0	5,173	3.7	3,900	6.8	0.8	18,897	4.9	3,974	2.5	0.5
12	1,024	7.0	3,136	4.9	-1.0	4,687	1.8	3,854	4.2	-1.2	18,718	4.3	3,964	2.3	-0.3
18/01	846	-0.1	3,245	4.6	3.5	5,518	5.6	3,721	-1.8	-3.5	19,232	4.8	3,933	1.3	-0.8
02	1,017	-13.3	3,188	3.4	-1.8	5,593	5.8	3,937	3.5	5.8	19,691	6.6	3,952	1.6	0.5
03	1,274	-2.0	3,275	6.9	2.7	5,814	7.6	3,736	-2.9	-5.1	19,686	8.0	3,930	-0.6	-0.5
04	1,100	-2.3	3,098	2.9	-5.4	5,656	3.0	3,903	0.7	4.5	19,344	6.5	3,941	0.0	0.3
05	973	-11.5	3,133	3.1	1.1	5,346	8.1	3,841	-2.4	-1.6	19,462	8.4	3,944	-1.2	0.1
06	1,188	7.7	3,099	5.5	-1.1	5,650	7.5	3,863	0.2	0.6	19,615	8.9	3,929	-2.4	-0.4
07	1,190	6.7	3,227	2.9	4.1	5,612	11.0	3,806	0.5	-1.5	19,525	9.1	3,906	-1.9	-0.6
08	798	-0.7	3,173	7.4	-1.7	4,991	9.3	3,891	-0.3	2.2	19,753	9.7	3,913	-1.4	0.2
09	1,090	0.3	3,044	-2.3	-4.1	5,951	8.5	3,840	0.2	-1.3	20,238	10.6	3,926	-1.0	0.3
10	1,067	-1.7	2,951	-5.0	-3.1	5,874	4.8	3,838	-0.8	0.0	20,636	10.6	3,917	-1.0	-0.2
11	1,076	9.9	3,121	-1.5	5.8	6,034	16.6	3,746	-3.9	-2.4	21,049	11.4	3,885	-2.2	-0.8
12	1,099	7.3	3,151	0.5	0.9	5,168	10.3	4,105	6.5	9.6	21,005	12.2	3,965	0.0	2.1
19/01	862	1.9	2,988	-7.9	-5.2	6,194	12.3	3,891	4.6	-5.2	21,675	12.7	3,984	1.3	0.5
02	1,080	6.2	3,124	-2.0	4.6	5,949	6.4	3,966	0.7	1.9	22,059	12.0	3,993	1.0	0.2
03	1,350	6.0	3,182	-2.8	1.8	6,343	9.1	3,852	3.1	-2.9	21,792	10.7	3,999	1.8	0.2
04	1,173	6.6	3,111	0.4	-2.2	6,344	12.2	3,961	1.5	2.8	21,951	13.5	4,019	2.0	0.5
05	980	0.7	3,183	1.6	2.3	5,455	2.0	3,795	-1.2	-4.2	21,841	12.2	3,993	1.2	-0.6
06	1,234	3.9	3,111	0.4	-2.3	6,262	10.8	3,944	2.1	3.9	22,033	12.3	4,044	2.9	1.3
07	1,158	-2.7	3,168	-1.8	1.8	6,019	7.3	3,725	-2.1	-5.5	21,932	12.3	3,990	2.1	-1.3
08	965	20.9	3,030	-4.5	-4.4	5,715	14.5	3,645	-6.3	-2.1	22,058	11.7	3,962	1.3	-0.7
09	1,254	15.0	3,091	1.5	2.0	6,238	4.8	3,811	-0.8	4.5	22,170	9.5	3,960	0.9	-0.1
10	928	-13.0	3,150	6.7	1.9	6,196	5.5	3,747	-2.4	-1.7	22,493	9.0	3,936	0.5	-0.6
11	1,054	-2.0	3,087	-1.1	-2.0	6,327	4.9	3,802	1.5	1.5	22,899	8.8	3,917	0.8	-0.5
12	999	-9.1	3,115	-1.1	0.9	5,483	6.1	3,756	-8.5	-1.2	22,764	8.4	3,909	-1.4	-0.2
20/01	899	4.3	3,100	3.8	-0.5	6,502	5.0	3,707	-4.7	-1.3	23,164	6.9	3,902	-2.1	-0.2
02	1,127	4.4	3,169	1.4	2.2	6,498	9.2	3,769	-5.0	1.7	23,543	6.7	3,915	-1.9	0.3
03	1,309	-3.0	3,094	-2.8	-2.4	6,190	-2.4	3,688	-4.2	-2.1	22,999	5.5	3,903	-2.4	-0.3
04	686	-41.5	2,722	-12.5	-12.0	5,132	-19.1	3,656	-7.7	-0.9	22,837	4.0	3,903	-2.9	0.0
05	779	-20.5	2,668	-16.2	-2.0	4,737	-13.2	3,743	-1.4	2.4	22,183	1.6	3,936	-1.4	0.8
06	1,173	-4.9	2,975	-4.4	11.5	5,487	-12.4	3,722	-5.6	-0.6	21,632	-1.8	3,966	-1.9	0.7
07	1,186	2.4	3,102	-2.1	4.3	5,370	-10.8	3,716	-0.2	-0.2	20,969	-4.4	3,988	0.0	0.6
08	1,175	21.8	3,216	6.1	3.7	4,750	-16.9	3,801	4.3	2.3	20,113	-8.8	4,000	1.0	0.3
09	1,303	3.9	3,168	2.5	-1.5	5,144	-17.5	3,662	-3.9	-3.7	19,400	-12.5	3,973	0.3	-0.7
10	1,316	41.8	3,113	-1.2	-1.7	5,423	-12.5	3,844	2.6	5.0	18,990	-15.6	4,016	2.0	1.1
11	1,303	23.6	3,239	4.9	4.1	4,975	-21.4	3,905	2.7	1.6	18,420	-19.6	4,048	3.3	0.8
12	1,092	9.3	3,448	10.7	6.4	4,188	-23.6	3,873	3.1	-0.8	17,921	-21.3	4,043	3.4	-0.1
21/01	1,215	37.0	3,269	4.8	-5.6	4,584	-27.8	3,864	3.7	-0.8	17,253	-24.2	4,065	3.7	0.3
02	1,363	22.8	3,392	6.5	3.8	4,294	-32.2	3,922	3.5	1.5	16,694	-27.8	4,092	4.0	0.7
03	1,629	25.8	3,466	11.5	2.2	4,462	-26.3	3,923	5.7	0.0	15,586	-31.0	4,165	6.2	1.8
04	1,347	98.1	3,406	24.8	-1.7	4,644	-7.4	4,107	11.7	4.7	15,199	-32.2	4,175	6.5	0.2
05	1,410	83.6	3,241	21.0	-4.9	4,231	-8.5	4,090	8.6	-0.4	14,654	-32.7	4,278	8.2	2.5
06	1,329	15.2	3,541	18.2	9.3	4,152	-22.7	3,996	6.9	-2.3	14,159	-33.4	4,279	7.5	0.0
07	1,248	6.6	3,495	12.2	-1.3	4,270	-18.4	4,025	7.7	0.7	13,912	-32.5	4,276	6.7	-0.1
08	1,046	-9.9	3,425	6.1	-2.0	3,689	-20.6	3,993	4.9	-0.8	13,690	-30.7	4,300	7.1	0.6
09	1,225	-5.0	3,487	9.8	1.8	4,025	-20.1	3,961	7.9	-0.8	13,389	-29.8	4,300	7.8	0.0
10	1,240	-4.6	3,572	14.1	2.5	4,502	-15.3	4,253	10.2	7.4	13,291	-28.8	4,380	8.6	1.9
11	1,227	-5.0	3,579	10.1	0.2	4,151	-15.0	4,303	9.8	1.2	13,192	-27.1	4,465	9.9	1.9
12	1,157	7.1	3,564	2.9	-0.4	3,903	-5.2	4,254	9.3	-1.1	13,157	-25.4	4,466	10.2	0.0