

# ON FINE'S PARTITION THEOREMS, DYSON, ANDREWS, AND MISSED OPPORTUNITIES

IGOR PAK

Department of Mathematics, MIT  
Cambridge, MA 02139  
pak@math.mit.edu

August 2, 2002

## Introduction

The history almost never works out the way you want it, especially when you are looking at it after the dust settles. The same is true in mathematics as well. There are times when the solution of a problem is overlooked simply by accident, due to a combination of some unfortunate circumstances. In a celebrated address [D4], Freeman Dyson described several “*missed opportunities*”, in particular a story of how he never discovered Macdonald’s eta-function identities. We present here the history of Fine’s partition theorems and their combinatorial proofs. As the reader shall see, many of the results could and perhaps should have been discovered a long time ago if not for a number of “missed opportunities”...

The central event in our little story is a publication of a short note [F1] by Nathan Fine. To quote George Andrews, “[Fine] *announced several elegant and intriguing partition theorems. These results were marked by their simplicity of statement and [...] by the depth of their proof.*” [A7] Without taking anything away from the depth and beauty of the results, we will show here that most of them have remarkably simple combinatorial proofs, in a very classical style. Perhaps, that’s exactly how it should be with the important results...

Fine’s partition theorems could be split into two (overlapping) categories: those dealing with partitions into odd and distinct parts, à la Euler, and those dealing with Dyson’s rank. We shall separate these two stories as they have relatively little to do with each other. The fortune and misfortune, however, had the same root in both stories, as we are about to discover.

Fine’s note [F1] didn’t have any proofs; not even hints on complicated analytic formulae which were used to prove the results. It was published in a National Academy of Science publication, in a journal devoted to all branches of science. Thus the paper was largely overlooked by subsequent investigators. The note contained a promise to have complete proofs published in a journal “*devoted entirely to mathematics.*” This promise was never fulfilled. What a misfortune!

Good news came rather unexpectedly. In the sixties, George Andrews, while a graduate student at the University of Pennsylvania, took a course of Nathan Fine on basic hypergeometric series. As he writes in his mini biography [A8], “*His*

Typeset by  $\mathcal{A}\mathcal{M}\mathcal{S}$ - $\mathcal{T}\mathcal{E}\mathcal{X}$

course was based on a manuscript he had been perfecting for a decade; it eventually became a book [F2].” In fact, book [F2] was published only in 1988, exactly 40 years after the publication of [F1]. It indeed contained the proofs of all partition results announced in [F1]. In the meanwhile, Andrews kept the manuscript and used it on many occasions before [F2] has appeared. Among other things, Andrews gave new analytic proofs of many results, found connections to the works of Rogers and Ramanujan, and, what’s important for the subject of this paper, gave combinatorial proofs to some of the theorems. Much of the fame Fine’s long unpublished results have owes to Andrews’s work and persistence (see [A1-A8]).

This is where the story splits into two, so the rest of the paper is largely mathematical, dealing separately with each of the Fine’s partition theorems. To simplify the presentation we change their order and use different notation. We conclude the paper with Dyson’s proof of Euler’s Pentagonal Theorem and final remarks.

A few words about the notation. We denote partitions of  $n$  by  $\lambda = (\lambda_1, \lambda_2, \dots, \lambda_\ell)$ , write  $\lambda \vdash n$ , or  $|\lambda| = n$ . Let  $\lambda'$  be a conjugate partition to  $\lambda$ . The largest part and the number of parts of  $\lambda$  are denoted by  $a(\lambda)$  and  $\ell(\lambda)$ , respectively. We use Young diagrams to represent partitions graphically. See [A3] for standard references, definitions and details.

### Partitions Into Distinct Parts and Franklin’s Involution

We start with the following result straight from [F1]:

**THEOREM 1 (Fine)** *Let  $\mathcal{D}_n^0$  and  $\mathcal{D}_n^1$  be the sets of partitions  $\lambda$  of  $n$  into distinct parts, such that the largest part  $a(\lambda) = \lambda_1$  is even and odd, respectively. Then:*

$$|\mathcal{D}_n^0| - |\mathcal{D}_n^1| = \begin{cases} 1, & \text{if } n = k(3k + 1)/2 \\ -1, & \text{if } n = k(3k - 1)/2 \\ 0, & \text{otherwise.} \end{cases}$$

It it perhaps suggestive to compare Theorem 1 with a similar looking *Euler’s Pentagonal Theorem*, which can be stated as follows:

**THEOREM 2 (Euler)** *Let  $\mathcal{Q}_n^0$  and  $\mathcal{Q}_n^1$  be the sets of partitions  $\lambda$  of  $n$  into distinct parts, such that the number of parts  $\ell(\lambda) = \lambda'_1$  is even and odd, respectively. Then:*

$$|\mathcal{Q}_n^0| - |\mathcal{Q}_n^1| = \begin{cases} (-1)^k, & \text{if } n = k(3k \pm 1)/2 \\ 0, & \text{otherwise.} \end{cases}$$

Of course, this similarity was not overlooked. Fine himself acknowledged that Theorem 1 “*bears some resemblance to the famous pentagonal theorem of Euler, but we have not been able to establish any real connection between the two theorems.*” In the Math. Review article [L], Lehmer reiterates: “*This results parallels a famous theorem of Euler.*”

As we shall show below, Theorem 1 has a proof nearly identical to the famous involutive proof by Franklin of Theorem 2. Franklin was a student of Sylvester at Johns Hopkins University, active in Sylvester’s exploration of the “*constructive theory of partitions*”. He published his proof [Fr], right before a celebrated treatise [S1] by Sylvester (for which Franklin also wrote few excerpts). These two papers laid a

foundation of Bijective Combinatorics, a field which blossomed in the second half of the twentieth century.

Of course, it is hard to blame Fine for not discovering the connection. In those days bijections were still rarely used to prove combinatorial results. Since the late sixties, however, the method became popular again, with a large number of papers proving partition identities by means of explicit bijections. Franklin's involution was far from forgotten, and was used on many occasions to prove various refinements of Euler's Pentagonal Theorem [KP], and even most recently to prove a new partition identity [C]. It is a pity that an application to Fine's theorem remained unnoticed for so many years.

*Proof.* Denote by  $\mathcal{D}_n = \mathcal{D}_n^0 \cup \mathcal{D}_n^1$  the set of all partitions into distinct parts. Let  $\lambda \in \mathcal{D}_n$ , and let  $[\lambda]$  be a Young diagram corresponding to  $\lambda$ . Denote by  $s(\lambda)$  the length of the smallest part in  $\lambda$ , and by  $b(\lambda)$  the length of a sequence of subsequent parts:  $a, a - 1, a - 2, \dots$ , where  $a = a(\lambda) = \lambda_1$ . One can view  $s(\lambda)$  and  $b(\lambda)$  as the lengths of the *horizontal line* and *diagonal line* of squares of  $[\lambda]$ , as in Figure 1. Now, if  $s(\lambda) \leq b(\lambda)$ , move the horizontal line to attach to the diagonal line. Similarly, if  $s(\lambda) > b(\lambda)$ , move the diagonal line to attach below the horizontal line. If we cannot make a move, stay put. This defines Franklin's involution  $\alpha : \mathcal{D}_n \rightarrow \mathcal{D}_n$ .

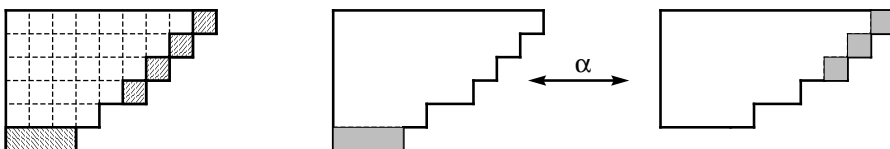


FIGURE 1. Young diagram  $[\lambda]$  corresponding to a partition  $\lambda = (9, 8, 7, 6, 4, 3)$ . Here  $s(\lambda) = 3$ ,  $b(\lambda) = 4$ , and  $\alpha(\lambda) = (10, 9, 8, 6, 4)$ .

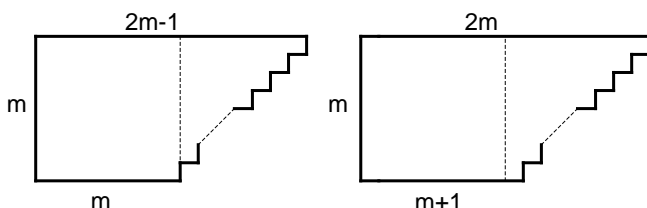


FIGURE 2. Fixed points of Franklin's involution.

Note that  $\alpha$  changes parity of the number of parts, except when  $\lambda$  is a fixed point. Observe that the only fixed points of the involution and the Young diagrams where the lines overlap, and  $s(\lambda) - b(\lambda)$  is either 0 or 1 (see Figure 2). The number of squares in these diagrams are  $k(3k \pm 1)/2$ , which are called *pentagonal numbers*. Therefore,  $|\mathcal{Q}_n^0| - |\mathcal{Q}_n^1|$  is 0 unless  $n$  is a pentagonal number, and is  $\pm 1$  in that case. This proves Theorem 2.

Similarly, note that  $\alpha$  changes parity of the largest part. Thus again, we have  $|\mathcal{D}_n^0| - |\mathcal{D}_n^1|$  is 0 unless  $n$  is a pentagonal number, and is  $\pm 1$  in that case. This completes the proof of Theorem 1.  $\square$

### Partitions Into Odd Parts and Sylvester's Bijection

Euler's theorem states that the number of partitions of  $n$  into odd numbers is equal to the number of partitions of  $n$  into distinct numbers. Here is another gem from [F1]:

**THEOREM 3 (Fine)** *Let  $\mathcal{O}_n^1$  and  $\mathcal{D}_n^3$  be the sets of partitions  $\lambda$  of  $n$  into odd parts, such that the largest part  $a(\lambda)$  is 1 and 3 mod 4, respectively. Then:*

$$\begin{aligned} |\mathcal{O}_n^1| &= |\mathcal{D}_n^0|, & |\mathcal{O}_n^3| &= |\mathcal{D}_n^1|, & \text{if } n \text{ is even,} \\ |\mathcal{O}_n^1| &= |\mathcal{D}_n^1|, & |\mathcal{O}_n^3| &= |\mathcal{D}_n^0|, & \text{if } n \text{ is odd.} \end{aligned}$$

Clearly, Fine's Theorem 3 is a refinement of Euler's theorem. As we shall see below, the following result of Fine [F2] is an extension:

**THEOREM 4 (Fine)** *For any  $k > 0$ , the number of partitions  $\mu \vdash n$  into distinct parts, such that  $a(\mu) = k$  is equal to the number of partitions  $\lambda \vdash n$  into odd parts, such that  $a(\lambda) + 2\ell(\lambda) = 2k + 1$ .*

In his early paper [A1], Andrews proved combinatorially Theorem 4, but never noticed that it implies Theorem 3. The reason could be the fact that Theorem 3 was coupled together with Theorem 1 in [F1], while the proofs use two different classical combinatorial arguments. The proofs of both Theorem 3 and Theorem 4 follows from Sylvester's celebrated bijection, sometimes called a *fish-hook construction*. This bijection is a map between partitions into odd and distinct numbers, and gives a combinatorial proof of Euler's theorem (see [A1,A3]).

Sylvester's bijection is another fixture in the combinatorics of partitions. It has been restated in many different ways (e.g. by using Frobenius coordinates and 2-modular diagrams [A6,B,PP]), was used to prove other refinements of Euler's theorem [KY]. Had Theorem 3 been better known and not omitted in [L], the following proof could have been standard.

*Proof.* Denote by  $\mathcal{O}_n = \mathcal{O}_n^0 \cup \mathcal{O}_n^1$  the set of all partitions into odd parts. Define *Sylvester's bijection*  $\varphi : \mathcal{O}_n \rightarrow \mathcal{D}_n$  as shown on Figure 3. Observe that  $a(\mu) = (a(\lambda) - 1)/2 + \ell(\lambda)$ , for all  $\mu = \varphi(\lambda)$ . Now rewrite this formula as  $a(\lambda) + 2\ell(\lambda) = 2a(\mu) + 1$ . This proves Theorem 4

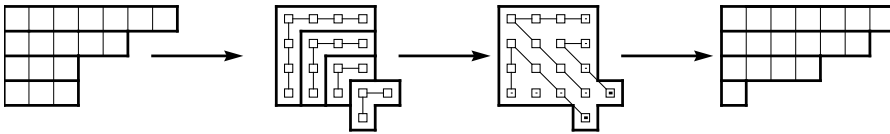


FIGURE 3. Sylvester's bijection  $\varphi : (7, 5, 3, 3) \rightarrow (7, 6, 4, 1)$ .

Note that  $\ell(\lambda) \equiv n \pmod{2}$  for all  $\lambda \in \mathcal{O}_n$ . From the above equation, we conclude:  $\varphi : \mathcal{O}_n^1 \rightarrow \mathcal{D}_n^0$ ,  $\mathcal{O}_n^3 \rightarrow \mathcal{D}_n^1$ , when  $n$  is even, and  $\varphi : \mathcal{O}_n^1 \rightarrow \mathcal{D}_n^1$ ,  $\mathcal{O}_n^3 \rightarrow \mathcal{D}_n^0$ , when  $n$  is odd. This proves Theorem 3.  $\square$

### Rank and Dyson's Map

This story started in 1944 with Dyson's paper [D1], which appeared in *Eureka*, a publication of mathematical students in Cambridge. Motivated by Ramanujan's identities for divisibility of the partition function, Dyson introduced the *rank* of a partition, which he conjectured would give a combinatorial interpretation of these identities. Still an undergraduate, Dyson did not prove these conjectures. They were resolved in 1948 by Atkin and Swinnerton-Dyer [At], although their celebrated paper [AS] appeared some years later.

Fortunately, Dyson moved to the US and published his conjectures as a short problem in the *American Mathematical Monthly* [D2]. Nathan Fine became interested in the problem and devoted three theorems in [F1] to enumeration of partitions with given rank (see below.) Taken out of context, his results seemed completely mysterious and would have remained in this state if not for a publication of the book [F2] and Dyson's paper [D3]. We know now that Fine's results were based on the third order mock theta function identities due to Watson [W], a technique used in [AS] as well.

Dyson's paper [D3] (see also [D6]) was aimed at finding a simple proof of the formula for a generating function for partitions with given rank. This formula was used as a tool for practical calculations in [D1] and later was established in [AS]. Unaware of Fine's work, Dyson rediscovered one of the Fine's then unpublished equations, called it a "*new symmetry*", and proved it combinatorially. He then deduced the desired formula, and obtained a new proof of Euler's Pentagonal Theorem (see below). We refer to [D5] for Dyson's personal and historical account of these discoveries.

Unfortunately, except for Andrews's paper [A5], nobody seems to have noticed that in fact Dyson's map, sometimes called *Dyson's adjoint* [BG], can be used to give combinatorial proofs of Fine's results. But even Andrews himself did not seem to realize that Dyson's map proves two other Fine's theorems as well. We return to that Andrews's paper in the next section.

Define the *rank* of a partition  $\lambda$  as  $r(\lambda) = a(\lambda) - \ell(\lambda)$ . Denote by  $\mathcal{P}_{n,r}$  the set of partitions of  $n$  with rank  $r$ , and let  $p(n,r) = |\mathcal{P}_{n,r}|$ . Similarly, denote by  $\mathcal{H}_{n,r}$  ( $\mathcal{G}_{n,r}$ ) the set of partitions of  $n$  with rank at most  $r$  (at least  $r$ ). Let  $h(n,r) = |\mathcal{H}_{n,r}|$ ,  $g(n,r) = |\mathcal{G}_{n,r}|$ . Clearly,  $p(n,r) = h(n,r) - h(n,r-1)$ , and  $g(n,r) = h(n,-r)$ . Also,  $h(n,r) + g(n,r+1) = \pi(n)$ , where  $\pi(n) = h(n,n) = \sum_r p(n,r)$  is the total number of partitions of  $n$ .

**THEOREM 5 (Fine)** *For all  $n > 0$ , we have:  $h(n, 1+r) = h(n+r, 1-r)$ .*

*Proof.* We shall construct an explicit bijection  $\psi_r : \mathcal{H}_{n,r+1} \rightarrow \mathcal{G}_{n+r,r-1}$ , which implies the result. Start with a Young diagram  $[\lambda]$  corresponding to a partition  $\lambda \in \mathcal{H}_{n,r+1}$ . Remove the first column with  $\ell = \ell(\lambda)$  squares. Add the top row with  $(\ell+r)$  squares. Let  $[\mu]$  be the resulting Young diagram (see Figure 4.) We call the map  $\psi_r : \lambda \rightarrow \mu$  the *Dyson's map*.

By assumption on  $\lambda$ , we have  $r(\lambda) = a(\lambda) - \ell \leq r+1$ , so  $a(\mu) = \ell+r \geq a(\lambda) - 1$ . Thus  $\mu$  is a partition indeed. Clearly,  $|\mu| = |\lambda| - \ell + (\ell+r) = n+r$ . Also,  $r(\mu) = a(\mu) - \ell(\mu) = \ell(\lambda) + r - (\lambda'_2 + 1) \geq r-1$ . Therefore,  $\mu = \psi_r(\lambda) \in \mathcal{G}_{n+r,r-1}$ , which completes the proof.  $\square$

We call the result of Theorem 5 the *Fine-Dyson relations*. The rest of the paper is built upon these relations and Dyson's map. Let us first prove the following four Fine's equations, which are listed in [F1] as one theorem as well.

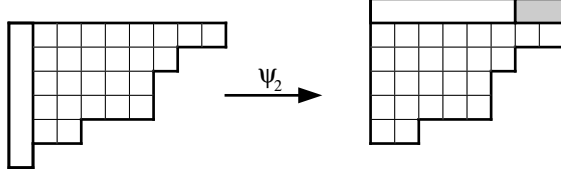


FIGURE 4. Dyson's map  $\psi_r : \lambda \rightarrow \mu$ , where  $\lambda = (9, 7, 6, 6, 3, 1) \in \mathcal{H}_{32, r+1}$ ,  $\mu = (8, 8, 6, 5, 5, 2) \in \mathcal{G}_{32+r, r-1}$ , and  $r = 2$ .

**THEOREM 6 (Fine)** *We have:*

- 1)  $p(n+1, 0) - p(n, 0) + 2p(n-1, 3) = \pi(n+1) - \pi(n)$ , for  $n > 1$ ,
- 2)  $p(n-1, 0) - p(n, 1) + p(n-2, 3) - p(n-3, 4) = 0$ , for  $n > 3$ ,
- 3)  $p(n, 0) - p(n-1, 1) + p(n-1, 2) - p(n-2, 3) = 0$ , for  $n > 2$ ,
- 4)  $p(n, r+1) - p(n-1, r) + p(n-r-2, r+3) - p(n-r-3, r+4) = 0$ , for  $n > r+3$ .

*Proof.* Taking  $r = 0$  and  $r = -1$  in the equation 4), and by using  $p(m, r) = p(m, -r)$  we obtain 2) and 3), respectively. By Theorem 5, and from the formula  $\pi(n) = h(n, 0) + g(n, 1) = h(n, 0) + h(n, -1)$ , we deduce equation 1):

$$\begin{aligned}
 \pi(n+1) - \pi(n) &= (h(n+1, 0) + h(n+1, -1)) - (h(n, 0) + h(n, -1)) \\
 &= (h(n+1, 0) - h(n+1, -1)) - (h(n, 0) - h(n, -1)) \\
 &\quad + 2h(n+1, -1) - 2h(n, -1) \\
 &= p(n+1, 0) - p(n, 0) + 2(h(n-1, 3) + h(n-2, 3)) \\
 &= p(n+1, 0) - p(n, 0) + 2p(n-1, 3).
 \end{aligned}$$

Equation 4) follows in a similar manner:

$$\begin{aligned}
 p(n-r-3, r+4) - p(n-r-2, r+3) &= (h(n-r-3, r+4) \\
 &\quad - h(n-r-3, r+3)) - (h(n-r-2, r+3) - h(n-r-2, r+2)) \\
 &= h(n, -r-2) - h(n-1, -r-1) - h(n, -r-1) - h(n-1, -r) \\
 &= -(h(n, -r-1) - h(n, -r-2)) + (h(n-1, -r) - h(n-1, -r-1)) \\
 &= -p(n, -r-1) + p(n-1, -r) = -p(n, r+1) + p(n-1, r).
 \end{aligned}$$

This completes the proof.  $\square$

Since equations in Theorem 6 follow immediately from the Fine-Dyson relations, one can obtain combinatorial proofs for these equations as well, by separating terms with positive and negative signs and then using Dyson's map to obtain identical sets of partitions on both sides. We present a variation on such a proof in case of another Fine's theorem from [F1].

**THEOREM 7 (Fine)** *For  $r \geq n-3$ , we have  $\pi(n) - \pi(n-1) = p(n+r+1, r)$ .*

*Proof.* Denote by  $\mathcal{F}_n$  the set of partitions  $\lambda \vdash n$  with the smallest part  $s(\lambda) \geq 2$ . Observe that  $|\mathcal{F}_n| = \pi(n) - \pi(n-1)$ . Indeed, one can always add a part (1) to every partition  $\nu \vdash n-1$  to obtain all partitions of  $n$ , except for those in  $\mathcal{F}_n$ .

Now, to a partition  $\lambda \in \mathcal{F}_n$  apply Dyson's map  $\psi_{r+1} : \lambda \rightarrow \mu$ , corresponding to the rank  $(r + 1)$ . We have  $\mu_1 = 1 + \ell(\lambda) + r \geq 2 + (n - 3) = n - 1$ . On the other hand,  $\mu_2 = \lambda_1 - 1 \leq n - 1$  by construction. Therefore  $\mu_1 \geq \mu_2$ , and  $\mu$  is a partition indeed. Note that  $r(\mu) = (\ell(\lambda) + r + 1) - (\ell(\lambda) + 1) = r$ , so  $\mu \in \mathcal{P}_{n+r+1,r}$ . Since the map is clearly reversible, we obtain the result.  $\square$

**The Iterated Dyson's Map**

As we mentioned before, Andrews in [A5] proved combinatorially the following theorem from [F1]:

**THEOREM 8 (Fine)** *Let  $\mathcal{D}_{n,r}$  be the set of partitions  $\mu \in \mathcal{D}_n$  with rank  $r(\mu) = r$ . Let  $\mathcal{U}_{n,2k+1}$  be the set of partitions  $\lambda \in \mathcal{O}_n$ , such that the largest part  $a(\lambda) = 2k + 1$ . Then:*

$$|\mathcal{U}_{n,2r+1}| = |\mathcal{D}_{n,2r+1}| + |\mathcal{D}_{n,2r}|.$$

One can view Theorem 8 as another refinement of Euler's theorem on partitions into odd and distinct parts. Andrews showed in [A5] that the theorem follows easily from the properties of Dyson's map  $\psi_r$ . It is rather unfortunate that Andrews's proof was published in a little known journal and have never been studied further. Below we present a direct bijection between  $\mathcal{O}_n$  and  $\mathcal{D}_n$ , which is different from Sylvester's and Glaisher's bijections [A3], and which proves Theorem 8. Naturally, our construction is motivated by [A5].

Let  $\lambda = (\lambda_1, \lambda_2, \dots, \lambda_\ell) \in \mathcal{O}_n$  be a partition into odd parts. Consider a sequence of partitions  $\nu^1, \nu^2, \dots, \nu^\ell$ , such that  $\nu^\ell = (\lambda_\ell)$ , and  $\nu^i$  is obtained by applying Dyson's map  $\psi_{\lambda_i}$  to  $\nu^{i+1}$ . Now let  $\mu = \nu^1$ . We shall call a new map  $\xi : \lambda \rightarrow \mu$  the *iterated Dyson's map*. See Figure 5 for an example.

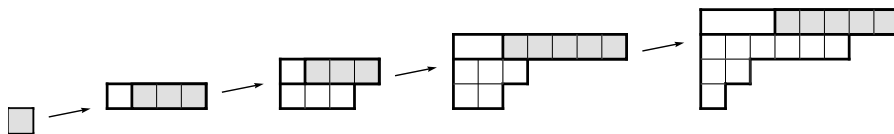


FIGURE 5. The iterated Dyson's map  $\xi : \lambda \rightarrow \mu$ , where  $\lambda = (5, 5, 3, 3, 1) \in \mathcal{U}_{17,5}$  and  $\mu = (8, 6, 2, 1) \in \mathcal{D}_{17,4}$ .

**THEOREM 9** *The iterated Dyson's map  $\xi$  defined above is a bijection between  $\mathcal{O}_n$  and  $\mathcal{D}_n$ . Moreover,  $\xi(\mathcal{U}_{n,2r+1}) = \mathcal{D}_{n,2r} \cup \mathcal{D}_{n,2r+1}$ , for all  $r \geq 0$ .*

Clearly, Theorem 9 implies Theorem 8. It would be interesting to find further applications of the map  $\xi$  to other partition theorems.

*Proof.* First, note that  $|\nu^i| = \lambda_i + \lambda_{i+1} + \dots + \lambda_\ell$ . Therefore  $|\mu| = |\nu^1| = |\lambda| = n$ , as required. Let us prove by induction that  $\nu^i$  is a partition into distinct parts, such that  $r(\nu^i)$  is either  $\lambda_i$  or  $\lambda_i - 1$ . The base of induction, when  $i = \ell$  and  $\nu^i = (\lambda_\ell)$ , is obvious.

Suppose the claim holds for  $\nu^{i+1}$ , i.e.  $a(\nu^{i+1}) - \ell(\nu^{i+1})$  is either  $\lambda_{i+1}$  or  $\lambda_{i+1} + 1$ , depending on the parity. Since  $a(\nu^i) = \ell(\nu^{i+1}) + \lambda_i$ , we have

$$(\nu^i)_1 = a(\nu^i) \geq (a(\nu^{i+1}) - \lambda_{i+1}) + \lambda_i > a(\nu^{i+1}) - 1 = (\nu^i)_2,$$

which implies that  $\nu^i$  is indeed a partition into distinct parts. Now, observe that  $\ell(\nu^i) = \ell(\nu^{i+1})$  or  $\ell(\nu^{i+1}) - 1$ . We have:

$$r(\nu^i) = a(\nu^i) - \ell(\nu^i) = (\ell(\nu^{i+1}) + \lambda_i) - \ell(\nu^i) \in \{\lambda_i, \lambda_i - 1\},$$

which proves the induction step.

Note that we never used the fact that  $\lambda \in \mathcal{O}_n$ . This becomes important in a construction of the inverse map  $\xi^{-1}$ . Define the map  $\xi^{-1}$  by induction, starting with  $\mu = \nu^1$  and applying the inverses of Dyson's maps  $\psi_r^{-1}$ . Clearly, the only freedom in the construction comes from the choice of  $r$ . But since we need to have  $r = a(\nu^i) - \ell(\nu^i)$  or  $r = a(\nu^i) - \ell(\nu^i) - 1$ , and  $r$  has to be odd, this makes the choice of  $r$  unique. Therefore the map  $\xi^{-1}$  is well defined, and  $\xi$  is a bijection. The second part of the theorem is immediate from the arguments above. This completes the proof.  $\square$

### Dyson's Proof of Euler's Pentagonal Theorem

We already mentioned that Dyson used his map to obtain a simple proof of Euler's Pentagonal Theorem. He writes, "*This combinatorial derivation of Euler's formula is less direct but perhaps more illuminating, than the well-known combinatorial proof of Franklin.*" [D3] Twenty years later he adds, "*This derivation is the only one I know that explains why the 3 appears in Euler's formula.*" [D5]

Here is how Dyson's proof goes. Let  $P(t)$  and  $G_r(t)$  be the generating functions for all partitions of  $n$ , and all partitions of  $n$  with the rank  $\geq r$  :

$$G_r(t) = \sum_{n=1}^{\infty} g(n, r) t^n, \quad P(t) = 1 + \sum_{n=1}^{\infty} \pi(n) t^n = \prod_{i=1}^{\infty} \frac{1}{(1-t^i)}.$$

Write the relations  $h(n, r) + g(n, r+1) = \pi(n)$  and Fine-Dyson's relations  $h(n, 1+r) = h(n+r, 1-r)$  in terms of  $g(\cdot)$  alone:

$$g(n, r) + g(n, r-1) = \pi(n), \quad g(n, r) = g(n-r-1, -2-r).$$

In the language of generating functions, these relations imply the following two equations:

$$1 + G_r(t) + G_{1-r}(t) = P(t), \quad G_r(t) = t^{r+1}(1 + G_{-2-r}(t)).$$

Here 1 in both equations comes from taking into account the "empty" partition. Thus we have:

$$G_r(t) = t^{r+1} P(t) - t^{r+1} G_{r+3}(t).$$

Iterating the above equation, we obtain:

$$\begin{aligned} G_r(t) &= t^{r+1} P(t) - t^{r+1} G_{r+3}(t) \\ &= t^{r+1} P(t) - t^{2r+5} P(t) + t^{2r+5} G_{r+6}(t) \\ &= t^{r+1} P(t) - t^{2r+5} P(t) + t^{3r+12} P(t) - t^{3r+12} G_{r+9}(t) \\ &\quad \dots \\ &= \sum_{m=1}^{\infty} (-1)^{m-1} t^{\frac{m(3m-1)}{2} + r m} P(t). \end{aligned}$$



Substituting this into  $P(t) - G_0(t) - G_1(t) = 1$ , we deduce Euler's Pentagonal Theorem:

$$\prod_{i=1}^{\infty} \frac{1}{(1-t^i)} \left( 1 + \sum_{m=1}^{\infty} (-1)^m t^{\frac{m(3m-1)}{2}} + \sum_{m=1}^{\infty} (-1)^m t^{\frac{m(3m+1)}{2}} \right) = 1.$$

Dividing both sides by the product  $P(t)$  and equating the coefficients gives us Theorem 2. In fact, Euler [E] was interested in the recurrence relation for the number of partition  $\pi(n)$ . The above formula implies:

$$\pi(n) = \pi(n-1) + \pi(n-2) - \pi(n-5) - \pi(n-7) + \pi(n-12) + \pi(n-15) - \dots$$

By analogy, Dyson [D5] obtained the following refinement of Euler's recurrence:

$$g(n, r) = \pi(n-r-1) - \pi(n-2r-5) + \pi(n-3r-12) - \dots$$

Naturally, one is tempted to convert the above simple analytic proof into a bijective proof of both recurrences. This is possible indeed. Denote by  $\mathcal{P}_n$  the set of all partitions of  $n$ . Write Dyson's recurrence as follows:

$$\begin{aligned} |\mathcal{H}_{n,-r}| &= |\mathcal{P}_{n-r-1}| - |\mathcal{P}_{n-2r-5}| + |\mathcal{P}_{n-3r-12}| - \dots \\ &= |\mathcal{G}_{n-r-1,-r-2} \cup \mathcal{H}_{n-r-1,-r-3}| - |\mathcal{G}_{n-2r-5,-r-5} \cup \mathcal{H}_{n-2r-5,-r-6}| \\ &\quad + |\mathcal{G}_{n-3r-12,-r-8} \cup \mathcal{H}_{n-3r-12,-r-9}| - \dots \\ &= |\mathcal{G}_{n-r-1,-r-2}| + (|\mathcal{H}_{n-r-1,-r-3}| - |\mathcal{G}_{n-2r-5,-r-5}|) \\ &\quad - (|\mathcal{H}_{n-2r-5,-r-6}| - |\mathcal{G}_{n-3r-12,-r-8}|) + \dots \end{aligned}$$

Now Dyson's map  $\psi_{-r-1}$  gives a bijection between the left hand side and the first term on the right hand side of the equation. Similarly, maps  $\psi_{-r-4}$ ,  $\psi_{-r-7}$ , etc., give bijections for the terms in the brackets. Thus we have a simple *bijective proof* of Dyson's recurrence. One can view the above bijection as a sign-reversing involution on the set of partitions  $\lambda \in \mathcal{H}_{n,-r}$ , or  $\lambda \vdash n - rm - m(3m-1)/2$ , where  $m \geq 1$ .

Similarly, after combining two involutions for  $r = 0$  and  $1$ , we easily obtain an involution  $\gamma$  proving Euler's recurrence:

$$\gamma : \bigcup_{m \text{ even}} \mathcal{P}_{n-m(3m-1)/2} \longrightarrow \bigcup_{m \text{ odd}} \mathcal{P}_{n-m(3m-1)/2},$$

where  $m$  on both sides is allowed to take negative integers, and the map  $\gamma$  (see Figure 6) is defined by the following rule:

$$\text{for } \lambda \in \mathcal{P}_{n-m(3m-1)/2}, \quad \gamma(\lambda) = \begin{cases} \psi_{-3m-1}(\lambda), & \text{if } r(\lambda) + 3m \leq 0, \\ \psi_{-3m+2}^{-1}(\lambda), & \text{if } r(\lambda) + 3m > 0. \end{cases}$$

Now comes a final surprise. Bijection  $\gamma$  is in fact well known! In this exact form it was discovered in 1985 by Bressoud and Zeilberger [BZ], for the sole purpose of finding a simple proof of Euler's recurrence. The authors seemed completely unaware of Dyson's proof, but managed to rediscover a version of Dyson's map

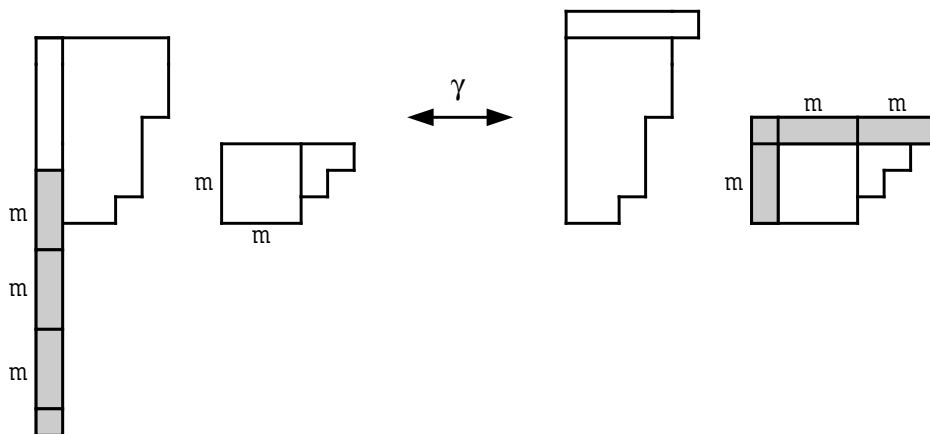


FIGURE 6. Bijection  $\gamma$  proving Euler's Pentagonal Theorem.

anyway. It seems, Fine-Dyson's relations and Dyson's map  $\psi_r$  are simply too fundamental to be offset by the "missed opportunities"...

### Final Remarks

There remains one last Fine's partition theorem in [F1] without a simple combinatorial proof. Let  $L(n)$  be the number of partitions  $\lambda \vdash n$  with odd smallest part  $s(\lambda)$ . The theorem states that  $L(n)$  is odd if and only if  $n$  is a square. We suggest that one should look for an involution proving this result. An interested reader is advised to read [A2] for an involutive proof of Rogers-Fine identity and an inspiration.

The conditions in Fine's theorems 6, and 7 are slightly changed either to correct or simplify the results (so as not to define  $p(n, r)$  for  $n \leq 0$ ). Dyson's map as defined and used in the literature is in fact conjugate to ours. We find this version somewhat easier to work with.

The iterated Dyson's map  $\xi$  appears to be new. It is basically a recursive application of Andrews's recurrence relation for  $|\mathcal{U}_{n, 2k+1}|$  and  $|\mathcal{D}_{n, r}|$  (see [A5]). Whether this bijection between partitions into odd and distinct numbers has other nice applications or not, the map  $\xi$  seems to give a natural proof of Theorem 8, just like Dyson's map gives a natural proof of Theorem 5. Unfortunately, the iterative construction of  $\xi$  is perhaps also a part of the nature. As Xavier Viennot once told the author, "*Sometimes, a recursive bijection is the only possible and one cannot do better.*"

Note that Dyson's proof of Euler's recurrence relation [D3] produces a bijection almost immediately once one employs Dyson's map. A different bijection, based on Franklin's involution, was obtained by means of the involution principle by Garsia and Milne [GM]. These two "automatic" approaches challenge Sylvester's paradigm that bijections "*should rather be regarded as something put into the two systems by the human intelligence that an absolute property inherent in the relation between the two [sets]*" [S2].

In a recent paper [BG], Berkovich and Garvan defined a 2-modular version of Dyson's map. They used this new map to give a combinatorial proof of Gauss's

famous identity. It would be interesting to convert this proof into a fully bijective proof of the identity and compare with Andrews's involutive proof [A2]. Similarly, one can consider an iterated version of this map and try to find new partition theorems this construction may prove.

This paper was motivated in part by the following quote: “[A5] *seems to be the only known application of Dyson's transformation*” [BG]. We must add that had the preprint [BG] never been put on the internet, this paper may have never been written. That would have been another “missed opportunity”...

#### **Acknowledgements:**

I am very grateful to Oliver Atkin for sharing invaluable historical comments on the discovery and the proof of Dyson's conjectures. I would also like to thank Michael Noga of the MIT Science Library for obtaining a copy of [A5] not available in the libraries of the Commonwealth of Massachusetts. The author was partially supported by the NSA and the NSF.

## REFERENCES

- [A1] G. E. Andrews, *On basic hypergeometric series, mock theta functions, and partitions* (II), Quart. J. Math. **17** (1966), 132–143.
- [A2] G. E. Andrews, *Two theorems of Gauss and allied identities proved arithmetically*, Pacific J. Math. **41** (1972), 563–578.
- [A3] G. E. Andrews, *The Theory of Partitions*, Addison-Wesley, Reading, MA, 1976.
- [A4] G. E. Andrews, *Ramanujan’s “Lost” Notebook. I. Partial  $\theta$ -Functions*, Adv. Math. **41** (1981), 137–172.
- [A5] G. E. Andrews, *On a partition theorem of N. J. Fine*, J. Nat. Acad. Math. India **1** (1983), 105–107.
- [A6] G. E. Andrews, *Use and extension of Frobenius’ representation of partitions*, in “Enumeration and design”, Academic Press, Toronto, ON, 1984, 51–65.
- [A7] G. E. Andrews, *Foreword to [F2]*, 1988.
- [A8] G. E. Andrews, *Some debts I owe*, Sémin. Lothar. Combin. **42** (1999), Art. B42a.
- [At] A. O. L. Atkin, personal communication, 2002.
- [AS] A. O. L. Atkin, H. P. F. Swinnerton-Dyer, *Some Properties of Partitions*, Proc. London Math. Soc. (3) **4** (1954), 84–106.
- [BG] A. Berkovich, F. G. Garvan, *Some Observations on Dyson’s New Symmetries of Partitions*, preprint (2002), available from <http://www.math.ufl.edu/~frank>.
- [B] C. Bessenrodt, *A bijection for Lebesgue’s partition identity in the spirit of Sylvester*, Discrete Math. **132** (1994), 1–10.
- [BZ] D. M. Bressoud, D. Zeilberger, *Bijection Euler’s Partitions-Recurrence*, Amer. Math. Monthly **92** (1985), 54–55.
- [C] R. Chapman, *Franklin’s argument proves an identity of Zagier*, El. J. Comb. **7** (2000), RP 54.
- [D1] F. J. Dyson, *Some Guesses in The Theory of Partitions*, Eureka (Cambridge) **8** (1944), 10–15.
- [D2] F. J. Dyson, *Problems for Solution: 4261*, Amer. Math. Monthly **54** (1947), 418.
- [D3] F. J. Dyson, *A new symmetry of partitions*, J. Combin. Theory **7** (1969), 56–61.
- [D4] F. J. Dyson, *Missed opportunities*, Bull. Amer. Math. Soc. **78** (1972), 635–652.
- [D5] F. J. Dyson, *A walk through Ramanujan’s garden*, in “Ramanujan revisited”, Academic Press, Boston, 1988, 7–28.
- [D6] F. J. Dyson, *Mappings and Symmetries of Partitions*, J. Combin. Theory Ser. A **51** (1989), 169–180.
- [E] L. Euler, *Introductio in analysin infinitorum. Tomus primus*, Marcum-Michaelem Bousquet, Lausannae, 1748.
- [F1] N. J. Fine, *Some new results on partitions*, Proc. Nat. Acad. Sci. USA **34** (1948), 616–618.
- [F2] N. J. Fine, *Basic hypergeometric series and applications*, AMS, Providence, RI, 1988.
- [Fr] F. Franklin, *Sure le développement du produit infini  $(1-x)(1-x^2)(1-x^3)\dots$* , C. R. Acad. Paris Ser. A **92** (1881), 448–450.
- [GM] A. M. Garsia, S. C. Milne, *A Rogers-Ramanujan bijection*, J. Combin. Theory Ser. A **31** (1981), 289–339.
- [KY] D. Kim, A. J. Yee, *A note on partitions into distinct parts and odd parts*, Ramanujan J. **3** (1999), 227–231.
- [KP] D. E. Knuth, M. S. Paterson, *Identities from partition involutions*, Fibonacci Quart. **16** (1978), 198–212.
- [L] D. H. Lehmer, *Math. Review* 10,356d, and *Errata* 10,856 (on paper [F1]).
- [PP] I. Pak, A. Postnikov, *A generalization of Sylvester’s identity*, Discrete Math. **178** (1998), 277–281.
- [S1] J. J. Sylvester, with insertions by F. Franklin, *A constructive theory of partitions, arranged in three acts, an interact and an exodion*, Amer. J. Math. **5** (1882), 251–330.
- [S2] J. J. Sylvester, *On a new Theorem in Partitions*, Johns Hopkins University Circular **2:22** (April 1883), 42–43.
- [W] G. N. Watson, *The final problem: An account of the mock theta-functions*, J. London Math. Soc. **11** (1936), 55–80.