

Introduction to Treemap

Ketan Babaria

HCIL, Computer Science Department
University of Maryland, College Park, MD, 20740
E mail kbabaria@glue.umd.edu

1. Introduction

Imagine a hard drive in a computer that has hundreds of directories and each directory in turn has hundreds sub-directories and so on and then at the end, each of the leaf directories has files of varying sizes. Now say users' want to know

- Which directory is taking up most of space?
- What is the approximate ratio of space taken up by root directories?
- What types of files are there in each directory?

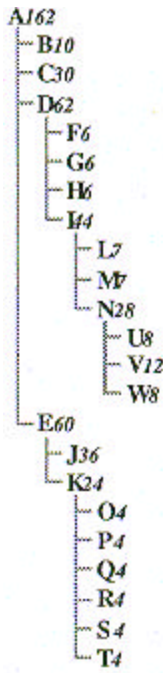
Windows Explorer (or similar tool) is a possible tool for finding such information but it's cumbersome when the number of files is large and it is impossible to see a global picture. For such cases Treemap is a powerful visualization tool. Treemap visualization method maps the hierarchy into 2 D space [Ben S]. It partitions the space into boxes where the size of the box is proportional to the 'size by' criteria specified by users', in above case, size of the directory / files.

This paper is an introduction to treemaps.

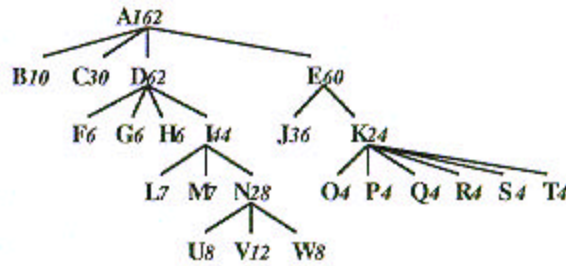
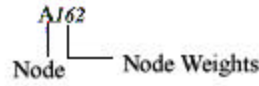
2. Tutorial

Tree visual structures usually represent hierarchical data in two ways, by using connection or by using containment. Trees shows link between nodes and its sub nodes and one common way to do this is by drawing connecting lines between nodes and its sub-nodes, for example we show family tree using this technique.

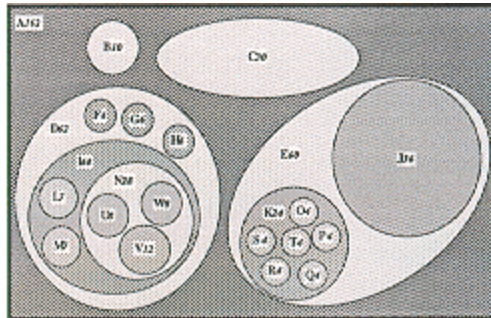
Tree Structures



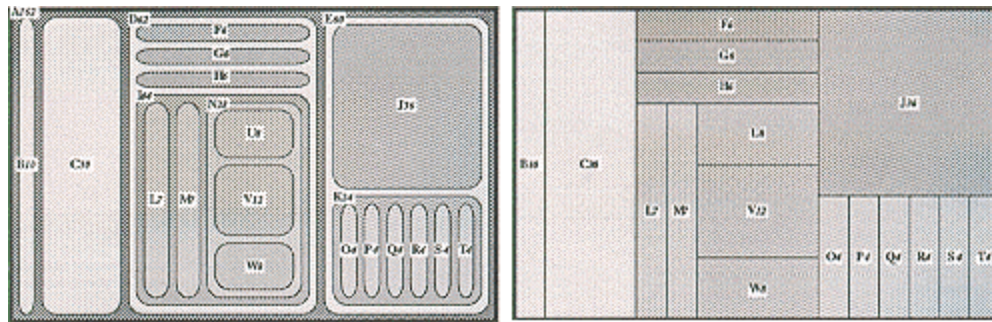
Outline



Tree Diagram



Venn Diagram



Nested Treemap

Treemap

Figure 1: Visualizing hierarchy [1]

Although this method is very easy to implement and interpret, it has two drawbacks: 1. Space is wasted in visually organizing the nodes. 2. As trees get large they may require an extreme aspect ratio that makes it difficult to display. The treemap visualization technique, developed by Ben Shneiderman at HCIL, University of Maryland College Park, presents a novel method to respond to visualizing hierarchical information.

The Treemap visualization method maps hierarchical information to a rectangular 2-D display in a space-filling manner so that 100% of the display space is utilized. In this method nodes, whose attributes are of more importance are given more display area. Users have the choice to define the leaf node attribute that determines space allocation. This is illustrated in the case of statistics for 50 US states.

Let the attributes be

- Population
- Number of Al Gore Votes in 2001 elections
- Number of George W Bush Votes in 2001 elections
- Population Density
- Whether Republican or Democrat won the state
- Electoral Votes

On initialization the Treemap program allocates equal space to all nodes. Fig 1 shows the initialized Treemap.

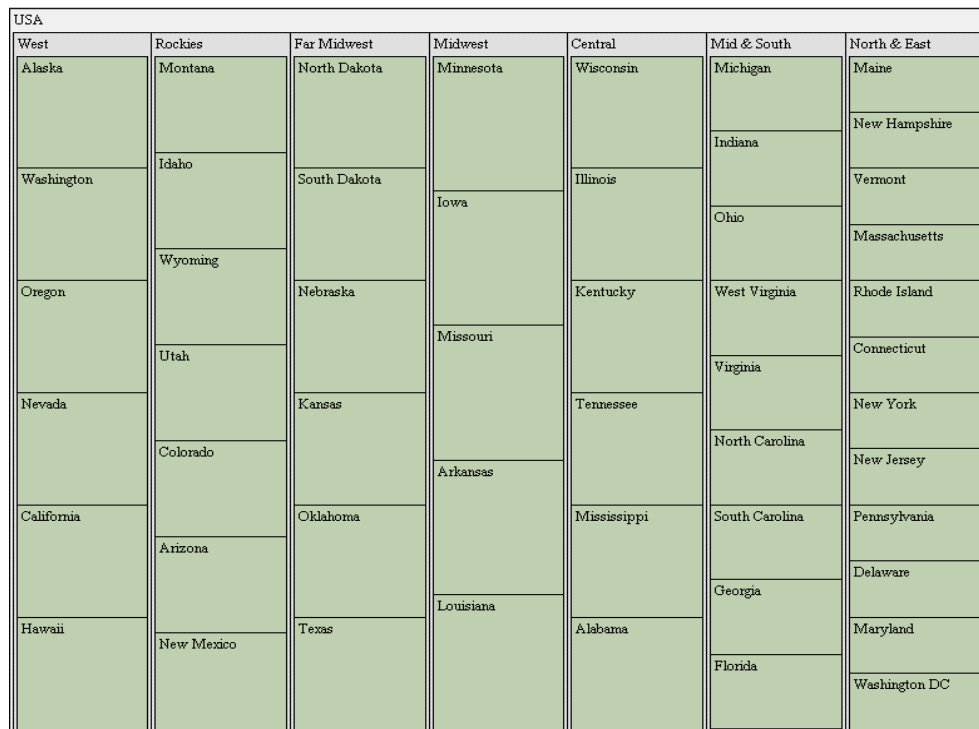


Figure 2: Initialized treemap-‘Size by’ criteria set to null so equal space allocation to all nodes.

Now say, the top three densest states need to be known.
It can be done by changing 'size by' attribute to Density



Figure 3: 'Size by' Combo box

The display shows the following picture. Since New Jersey occupies the largest display area, it's the densest state followed by Rhode Island and Connecticut. Also Ohio is denser than Virginia but have almost same density as Florida. This technique also gives insight into the global picture.

For example it can be easily figured out that all of the top 5 densest states lie in the east coast. Treemap also provides answer to questions like 'Is the densest state in Mid & South denser than densest state in Central?'

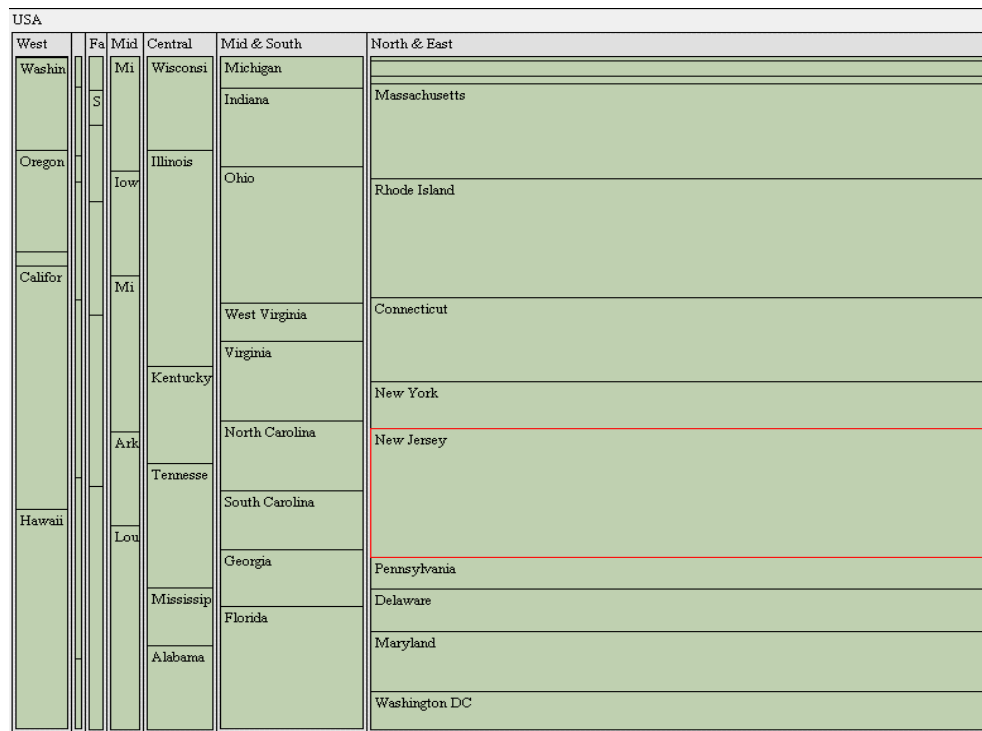


Figure 4: Treemap with 'Size By' criteria changed to Density

Now users' may want to know which states voted Democratic and which ones voted Republican in the 2000 election. This can be done by setting 'Color By' attribute to 'Party' in the 'Color By' combo box.



Figure 5: 'Color by' Combo Box and color allocation display

The display changes to one shown in Figure 5.



Figure 6: Treemap with ‘Color By’ set to ‘Party’. Color green represents Democratic and blue represents Republican.

It can be deduced from the figure that top 5 densest states are Democratic and most of the states in North and East are Democratic while Mid and South are mostly Republican. Similarly Sizing by Population and then Coloring by Party gives the relation between Population and Party. If users’ are only interested in the states by Party it can be easily viewed by setting ‘Size by’ to None and ‘Color by’ to Party. Figure 6 shows this configuration.



Figure 7: Treemap with ‘Size by’ set to null and ‘Color By’ set to Party. Only shows which state voted for which party.

Treemaps coupled with dynamic query provides users’ with powerful tool to query a large data set or to find patterns.

Dynamic query in treemap is implemented using buttons, radio buttons and sliders. It applies the principles of direct manipulation to Database searching.

- Visual representation of the query’s components
- Visual representation of results
- Rapid, incremental and reversible control of query
- Selection by pointing, not typing
- Immediate and continuous feedback.

Dynamic queries are easy to learn and users can formulate very complex query with very little training. Lets walk through one example to better understand the efficacy of Dynamic Query to query a database.

Suppose users are interested in knowing party of the most populous state that satisfies following criteria

- Electoral votes are minimum 12 but not greater than 45.
- Bush votes are minimum 621000 but not greater than 3,800,070
- Gore votes are minimum 37130 but not greater than 5861200
- Population is minimum 6809200 but not greater than 28700750
- Density is minimum 100 but not greater than 900

First step is to set all the sliders to the above values

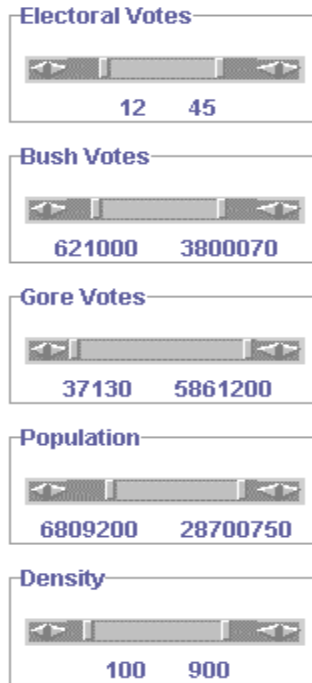


Figure 8: Sliders for dynamic query

As the sliders are adjusted the states that do not satisfy these criteria are grayed out. Only states that satisfy the above criteria are not grayed for this example, Illinois, Ohio, Florida, New York and Pennsylvania.

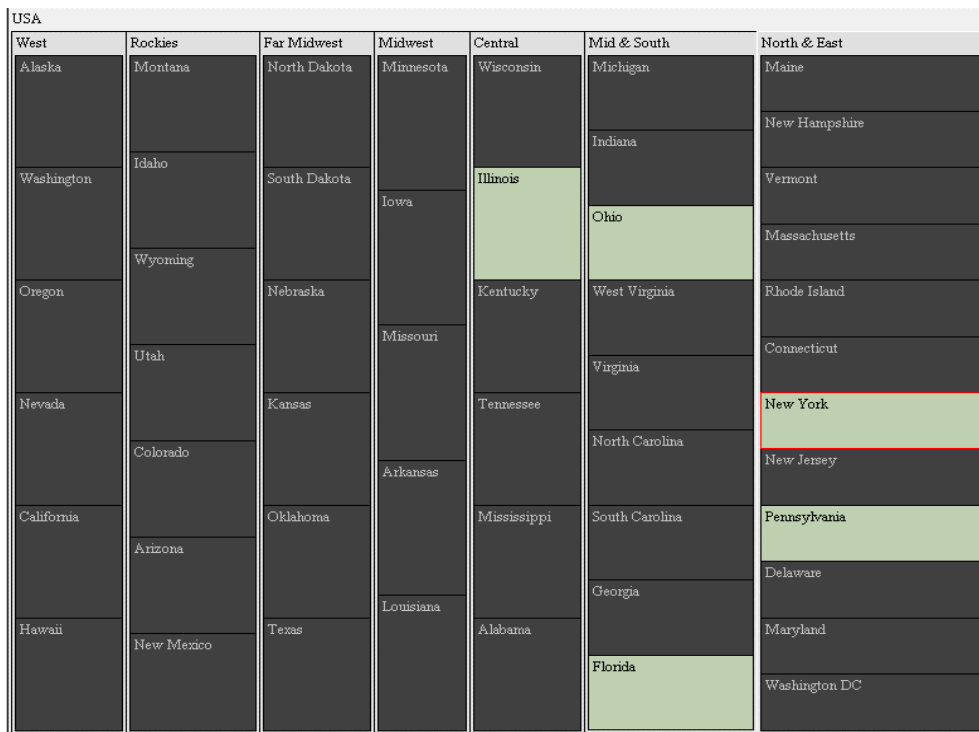


Figure 9: Grayed out treemap when the sliders are adjusted.

Next use the combo box to size by population.

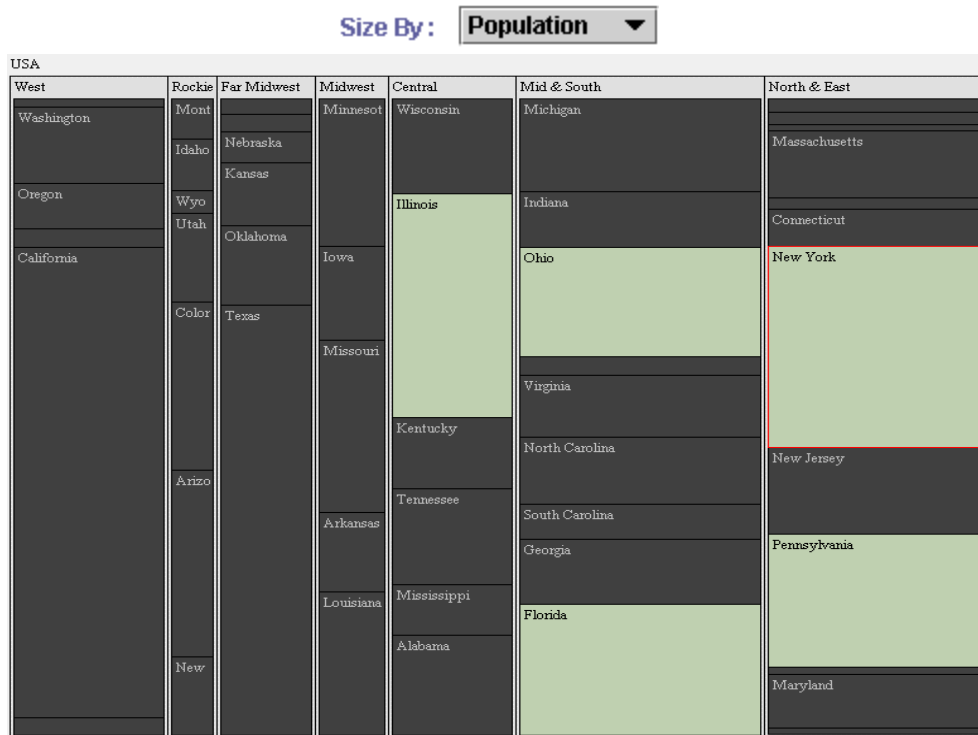


Figure 10: Grayed out treemap when ‘Size by’ combo box is changed to Population.

Since New York occupies the largest area among these five remaining states so NY has the largest population satisfying the above criteria.

Finally to know the party set ‘Color by’ attribute to ‘Party’.



Figure 11: ‘Color By’ combo box set to party.

Following figure shows the result.

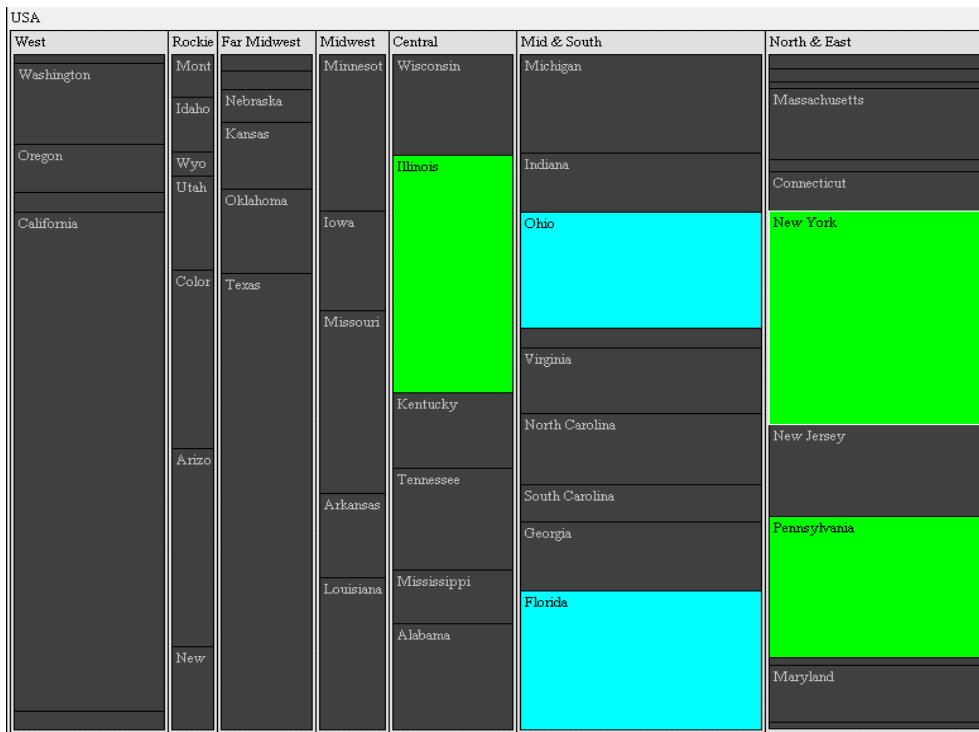


Figure 12: Treemap showing the party of the most populous state which voted for Democrat and satisfies the criteria set by sliders.

Its clear that New York is the only state that satisfies the above given criteria and Party there is Democrats.