

An interdisciplinary study of typhoid fever in Central Division, Republic of Fiji



Aaron P Jenkins , Namrata Prasad , Lanieta Naucukidi , Varanise Rosa , Shalini Pravin , Gandercillar Vosaki , Rina Kumar, Talitha Cambemaiwai , Mike Kama, Kylie M. Jenkins , Stacy Jupiter, John A. Crump , Edward K. Mulholland , Pierre Horwitz , Richard Strugnell



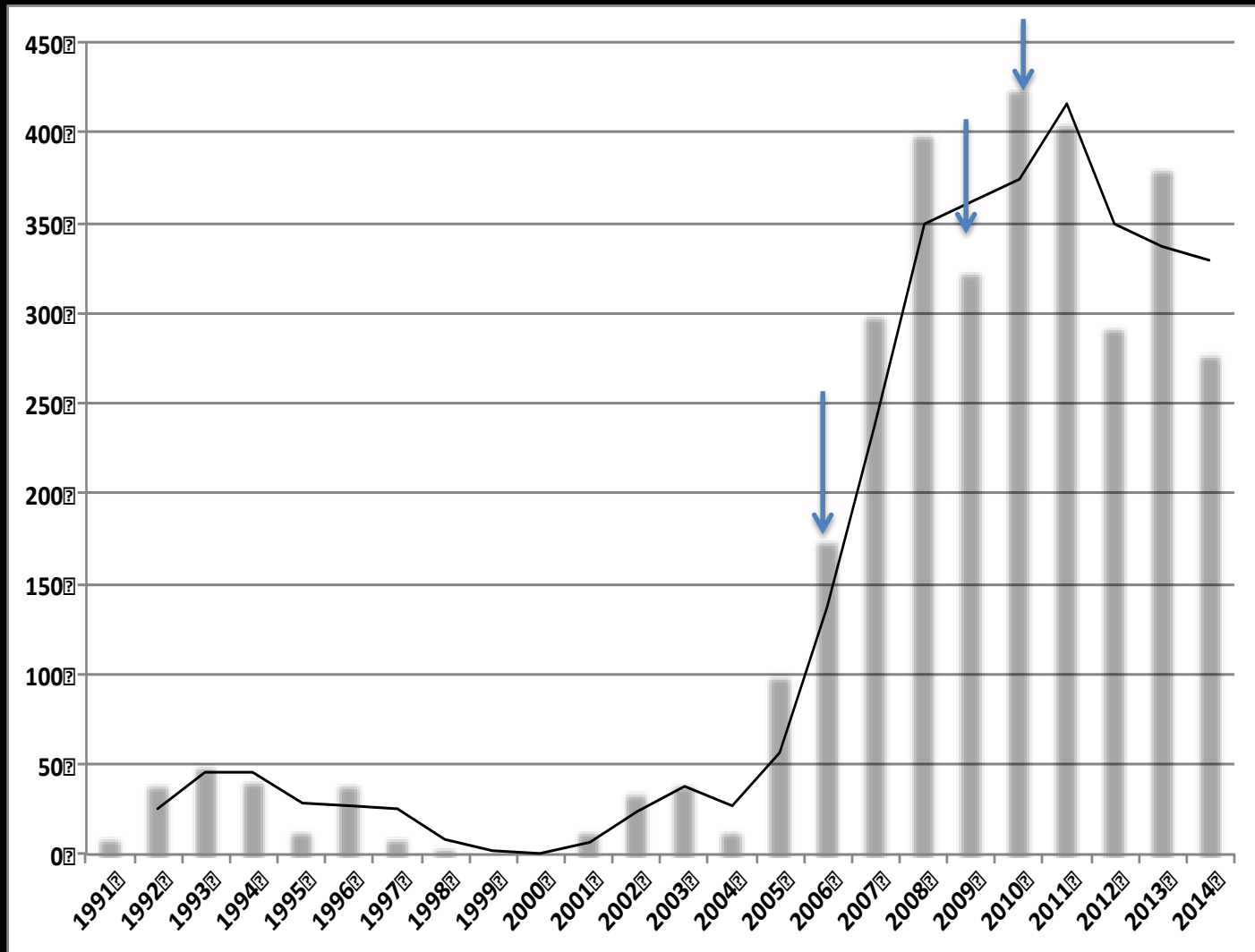
Outline

- The study framework
- Where are the cases – GIS
- Case /control
- Environmental investigations
- Molecular detection -rPCR



Salmonella Typhi bloodstream infections detected by passive surveillance, Fiji, 1991 -2014

Number of lab confirmed Typhoid cases



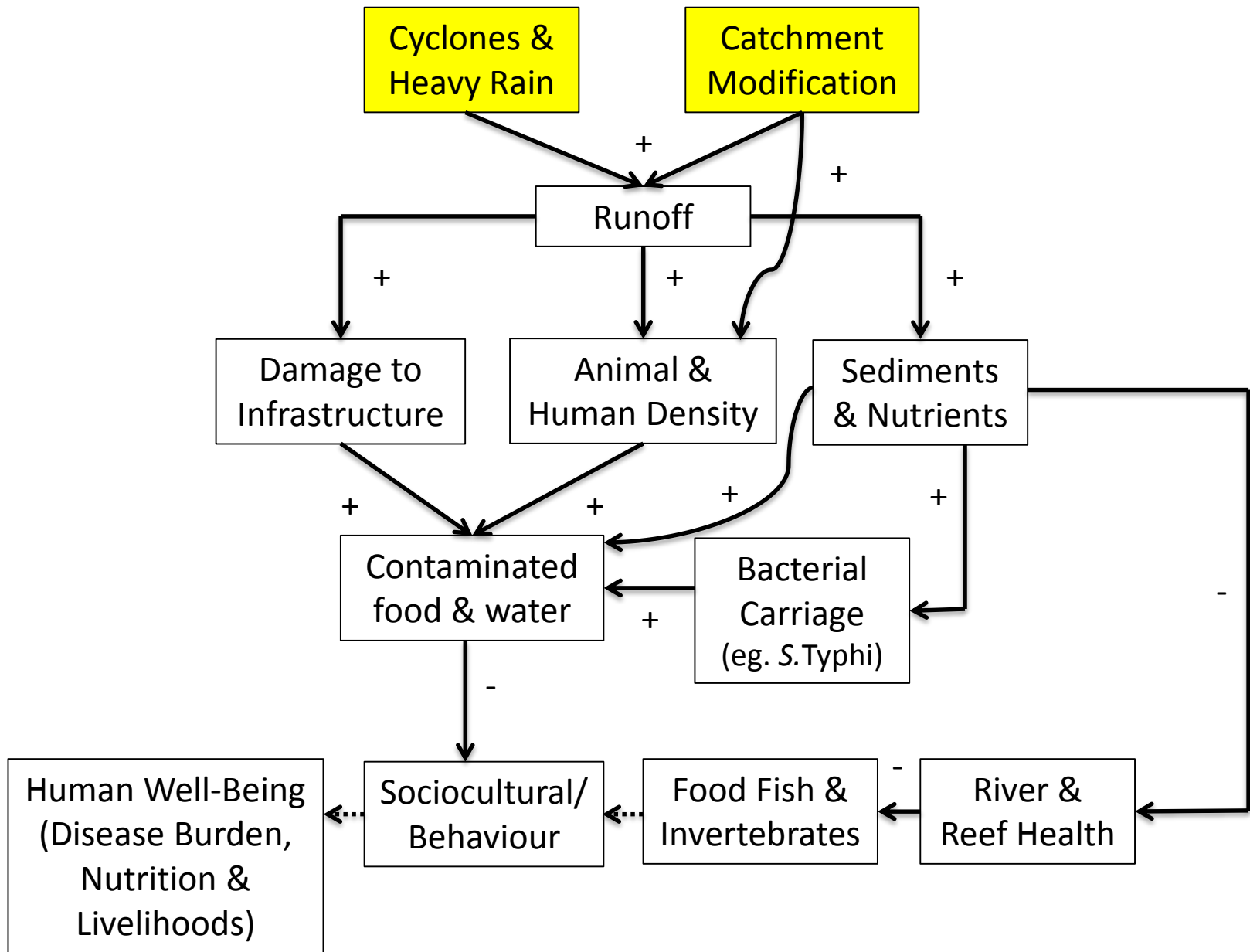
Adapted from Kool et al. 2010



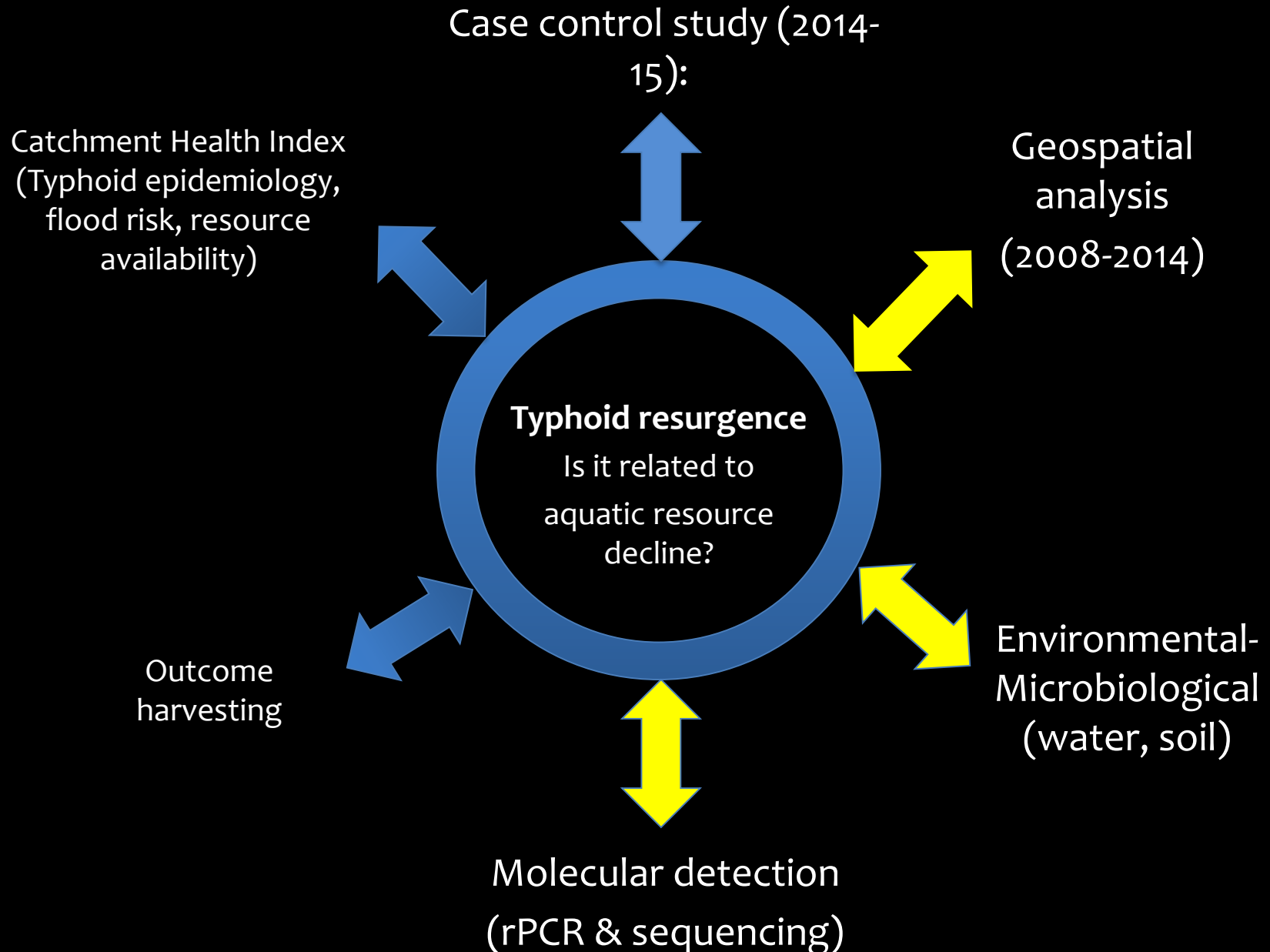
Primary threats to natural systems



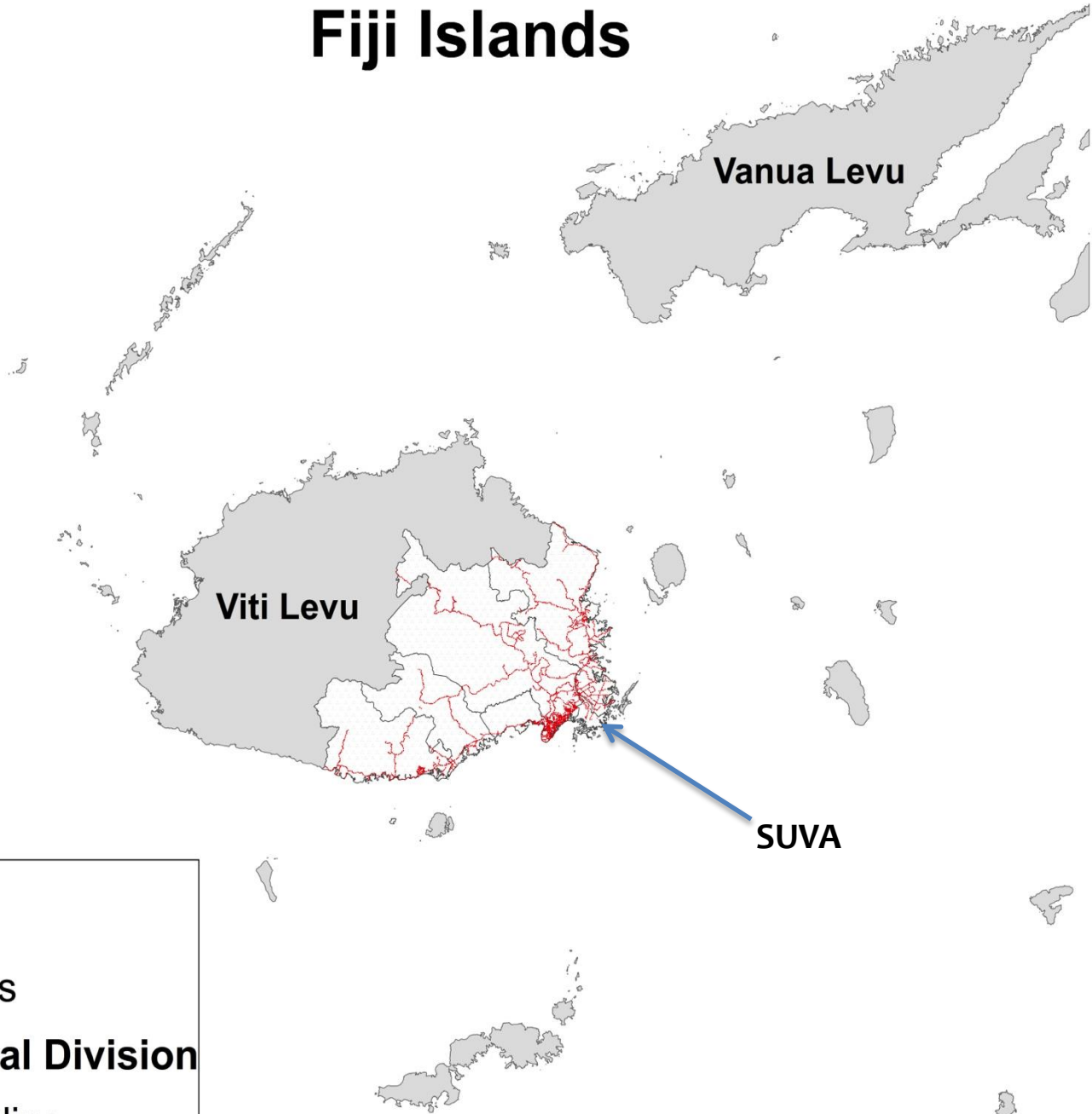
Conceptual model of mechanisms determining health in high island river basins



Interdisciplinary research elements



Fiji Islands



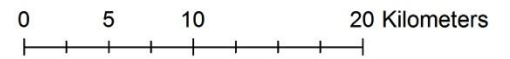
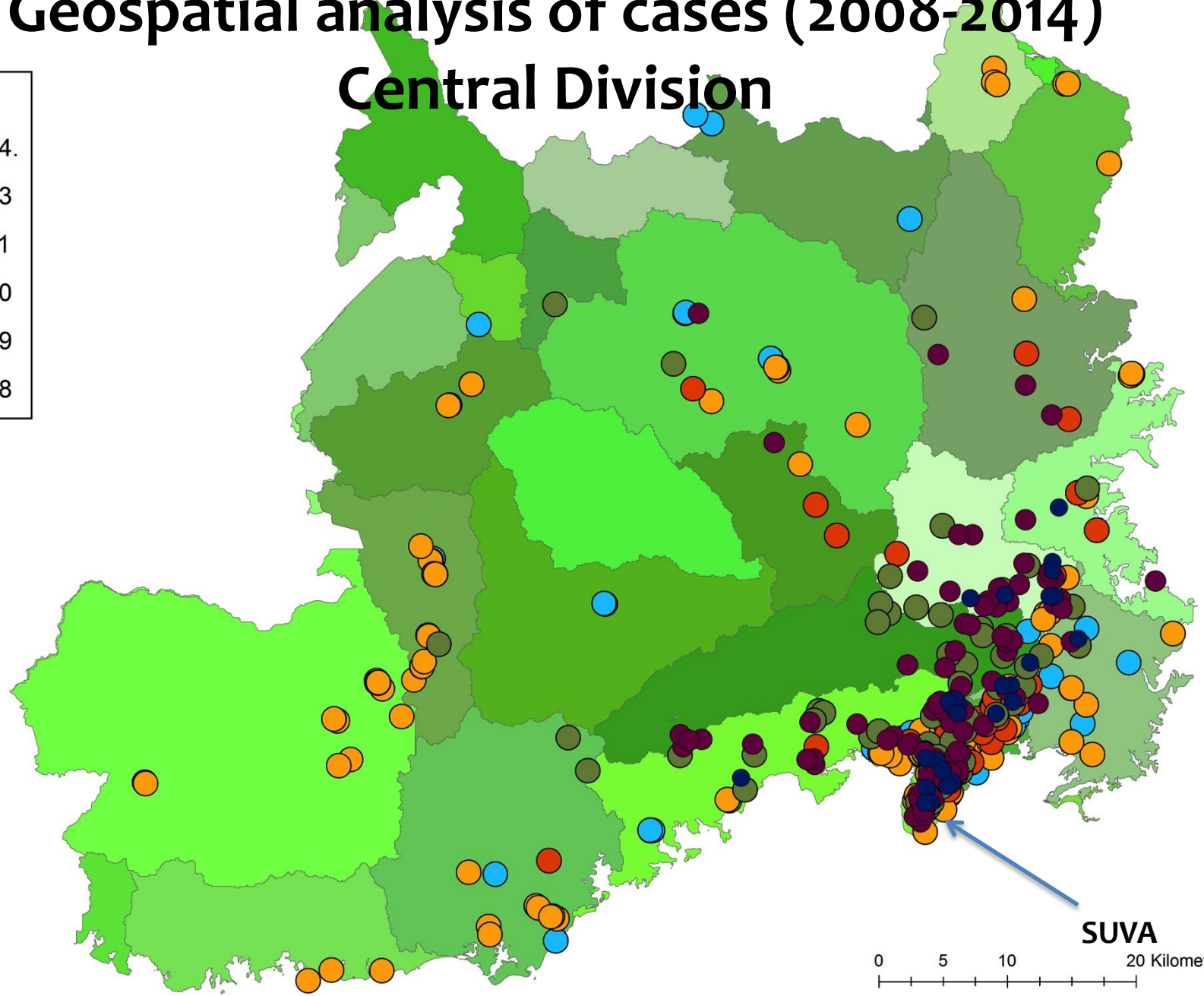
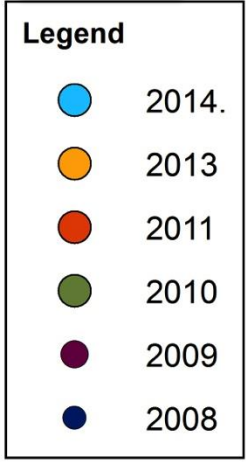
Legend

-  Roads
-  **Central Division**
-  Coastline



Geospatial analysis of cases (2008-2014)

Central Division



SUVA

Geospatial analysis

Legend

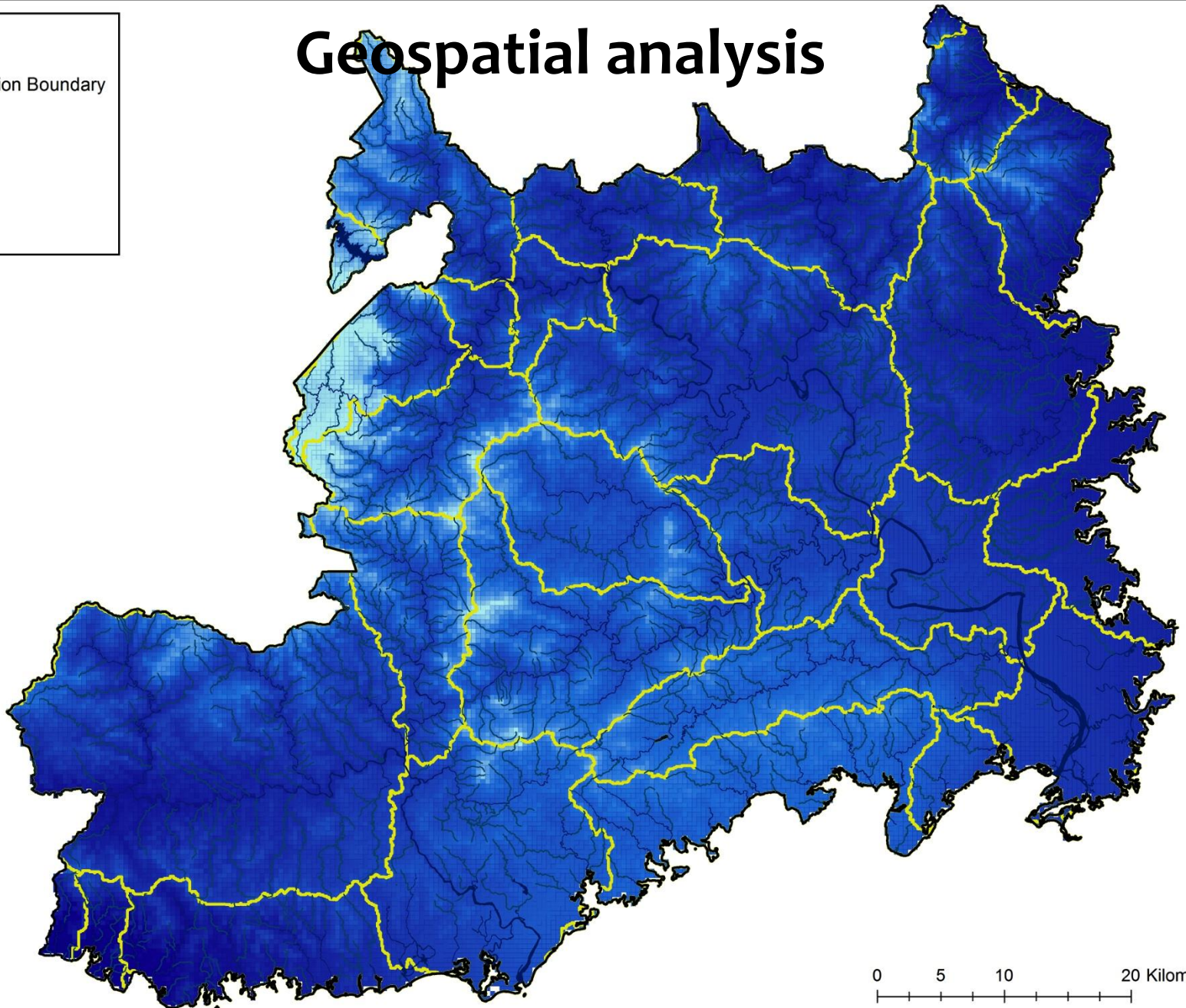
 Central Division Boundary

Catchments

 Catchments

 Rivers

 Creeks



0 5 10 20 Kilometers

Typhoid Incidence 2013

Legend

□ Central Boundary

— Roads

■ River

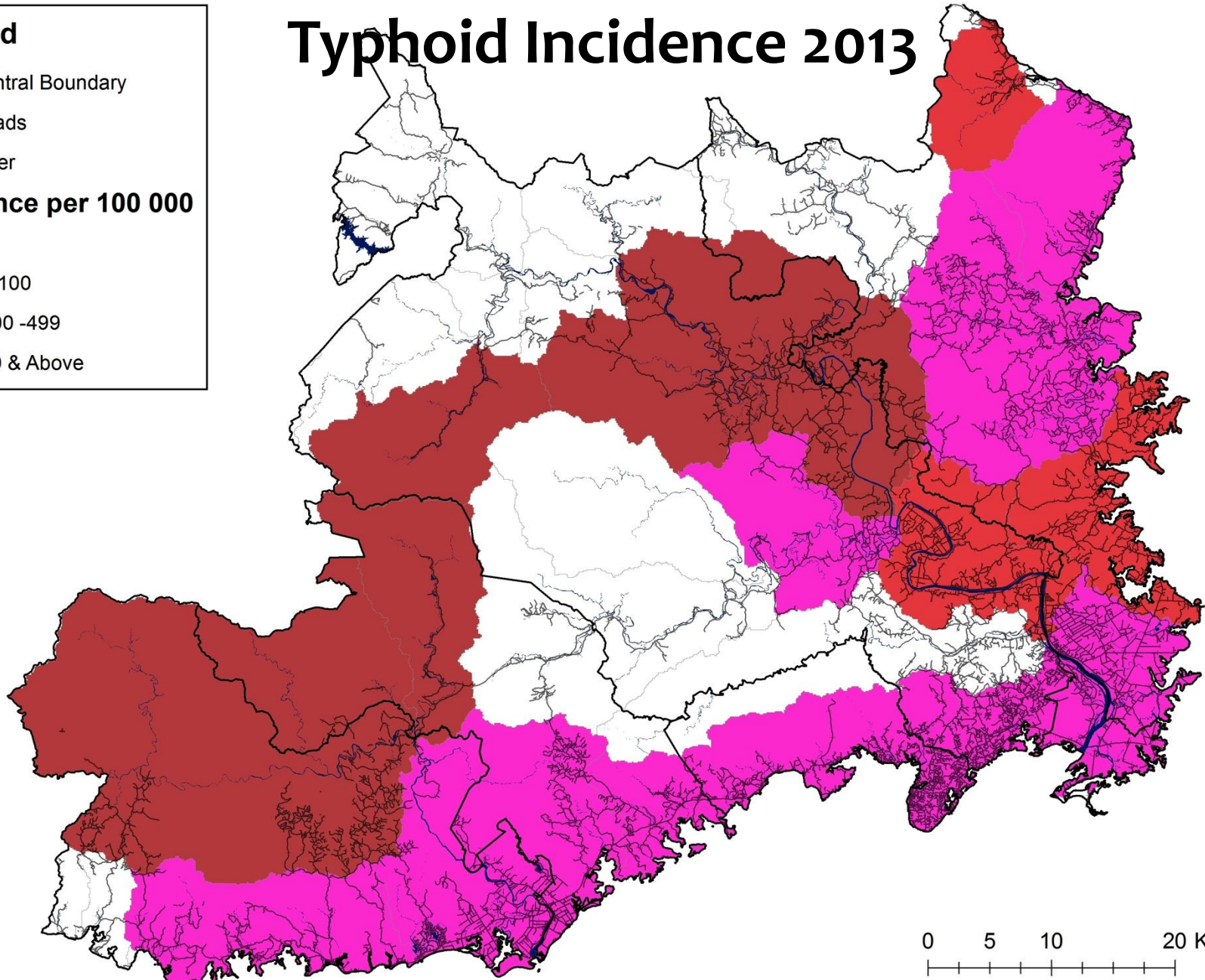
Incidence per 100 000

□ 0

■ 10-100

■ >100 -499

■ 500 & Above



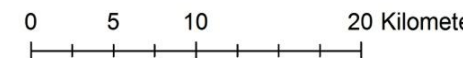
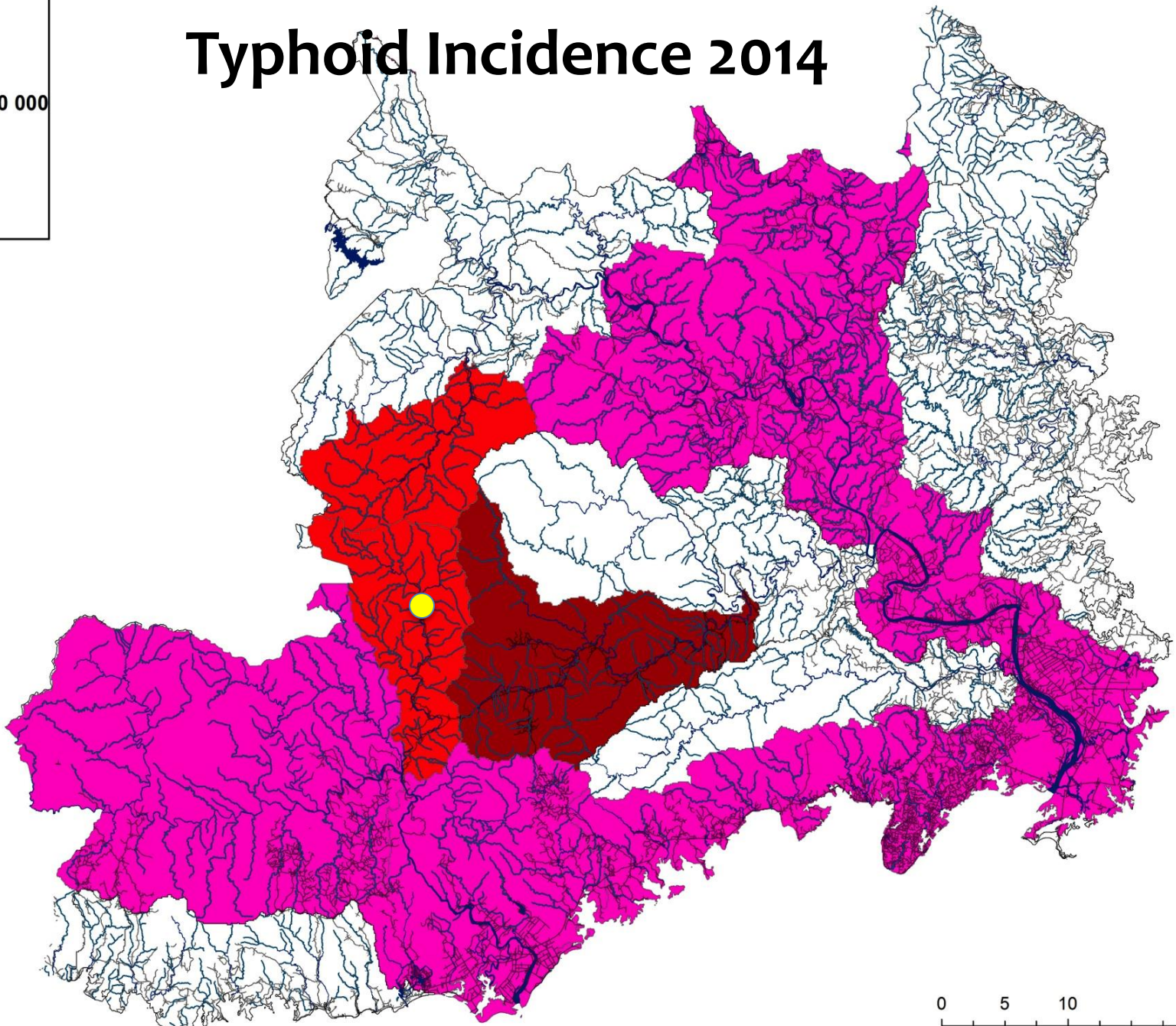
Typhoid Incidence 2014

Legend

- Rivers
- Roads

Incidence per 100 000

- 0
- 10-100
- >100-499
- 500 & Above



Rural high incidence setting

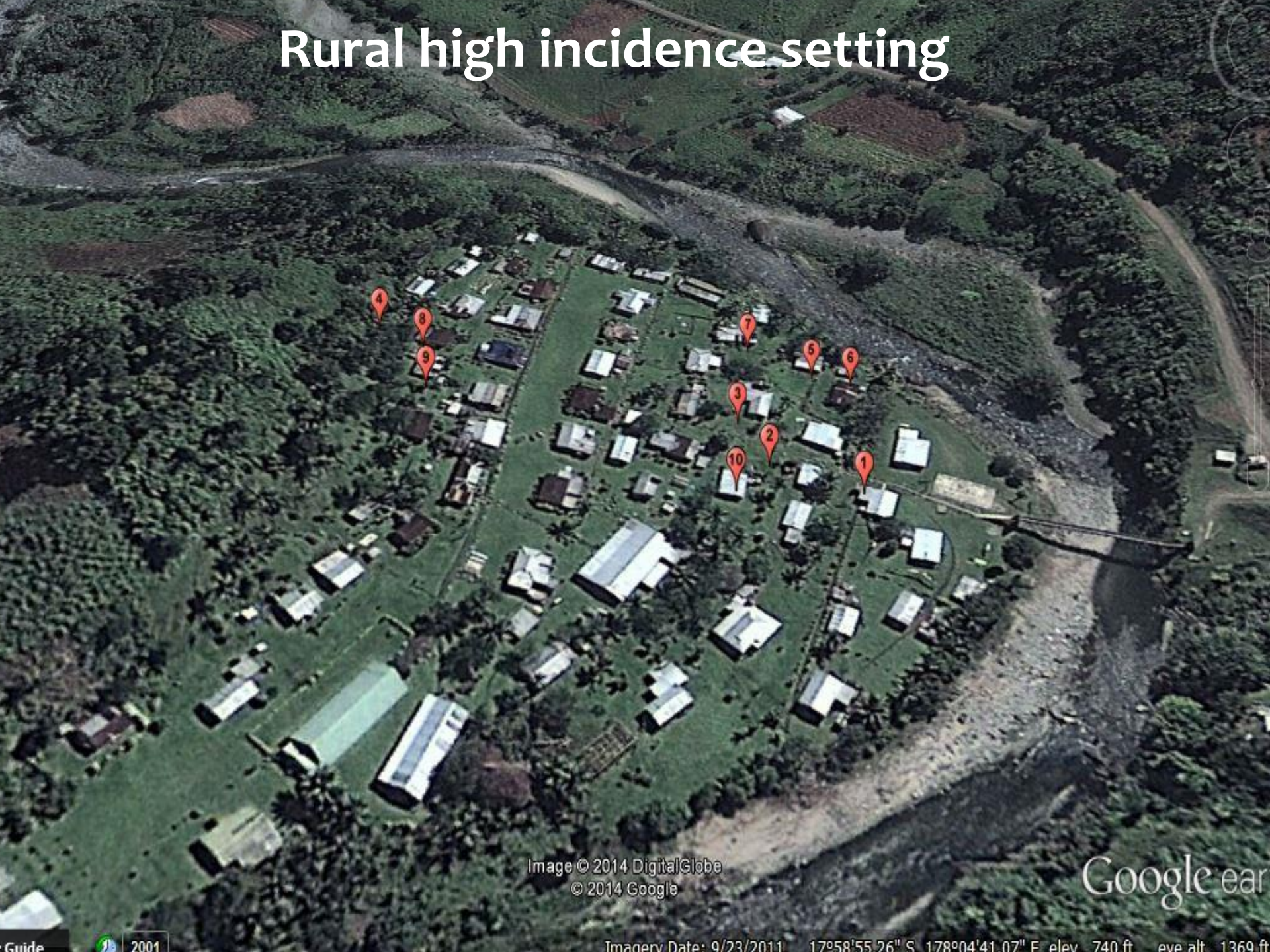


Image © 2014 DigitalGlobe
© 2014 Google

Google earth

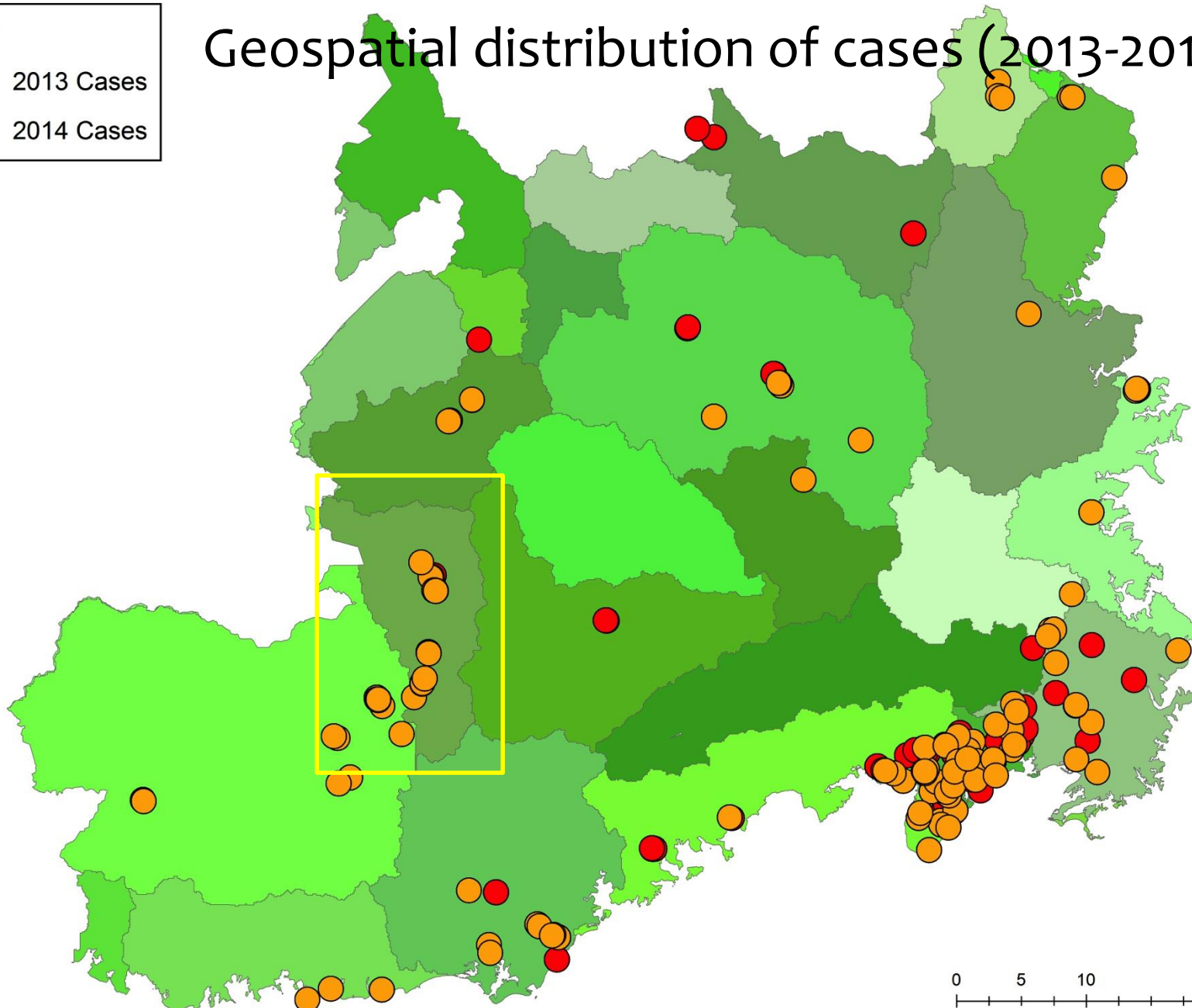
Urban high incidence setting



Legend

- 2013 Cases
- 2014 Cases

Geospatial distribution of cases (2013-2014)



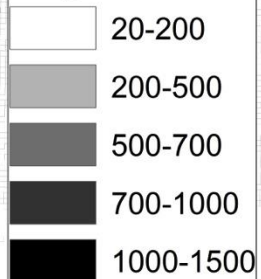
Upper Navua Catchment



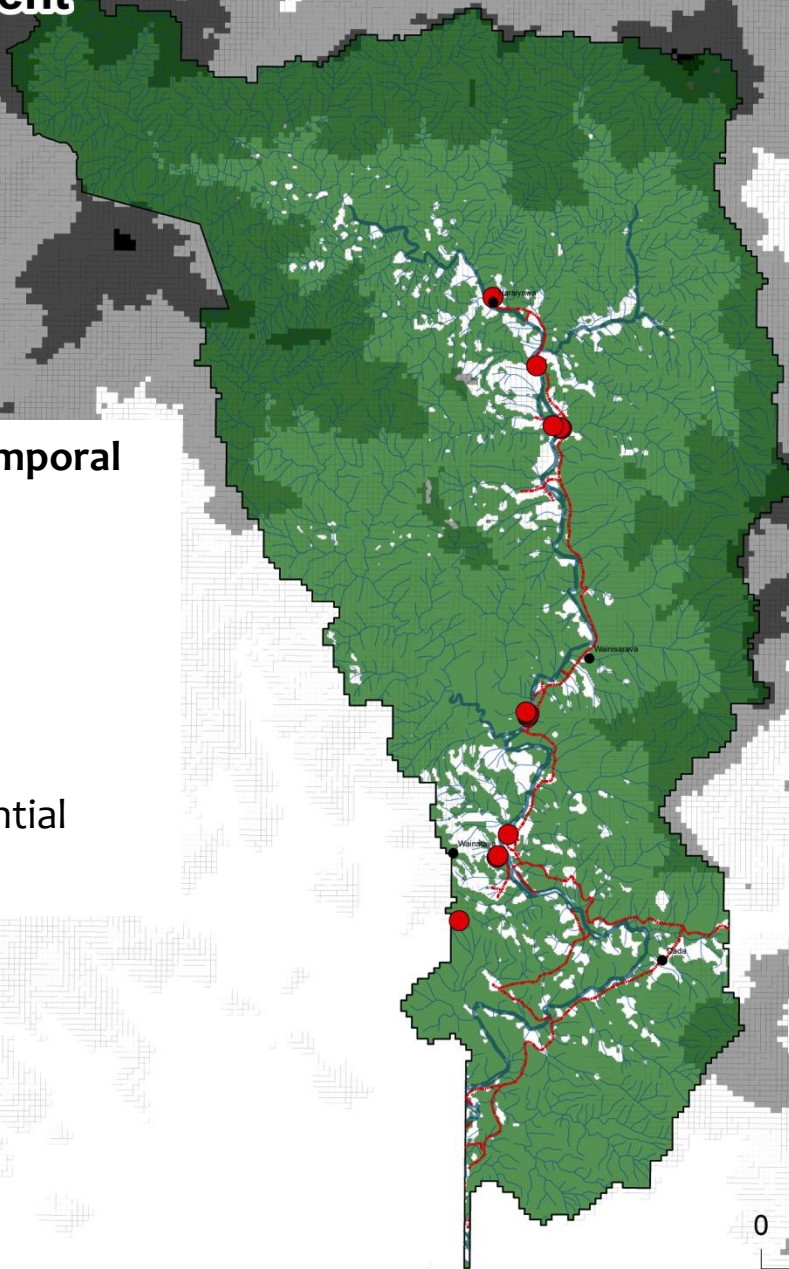
Potential landscape/temporal predictors:

- Forest cover
- Road density
- # River crossings
- Level of cultivation
- Relative Erosion Potential
- Rainfall

Legend



Legend

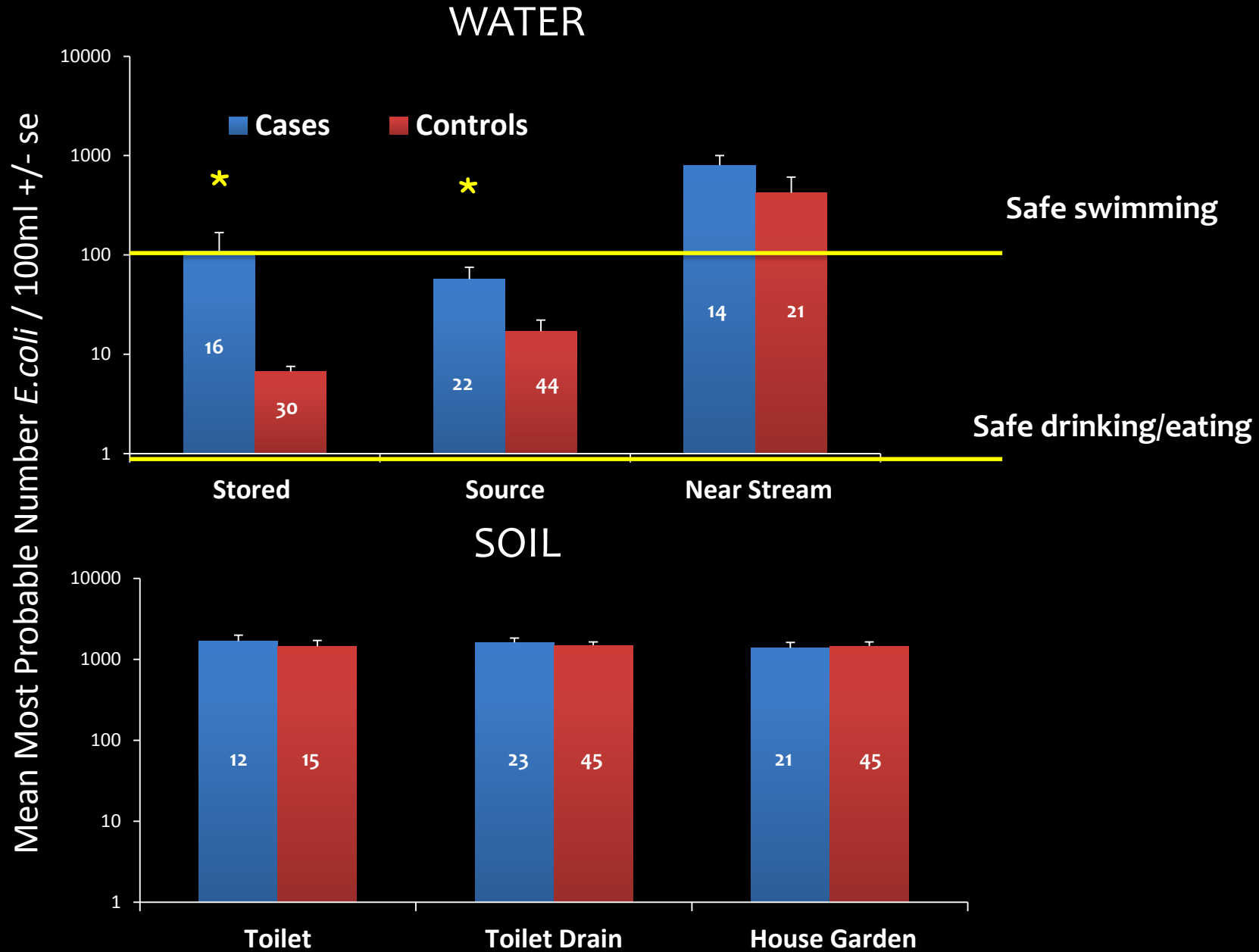


Environmental sampling

- Water – stored, source, nearby stream
- Soil – toilet, toilet drain, household garden
- On site – Temp, pH, conductivity, DO
- Lab process – Total Coliforms, *E.coli*
- Filtered (0.4 microns) – stored for PCR
- Filtrate – Nitrates, Phosphates, Ammonia



Mean Most Probable Number of *Escherichia coli* in water & soil of cases & controls





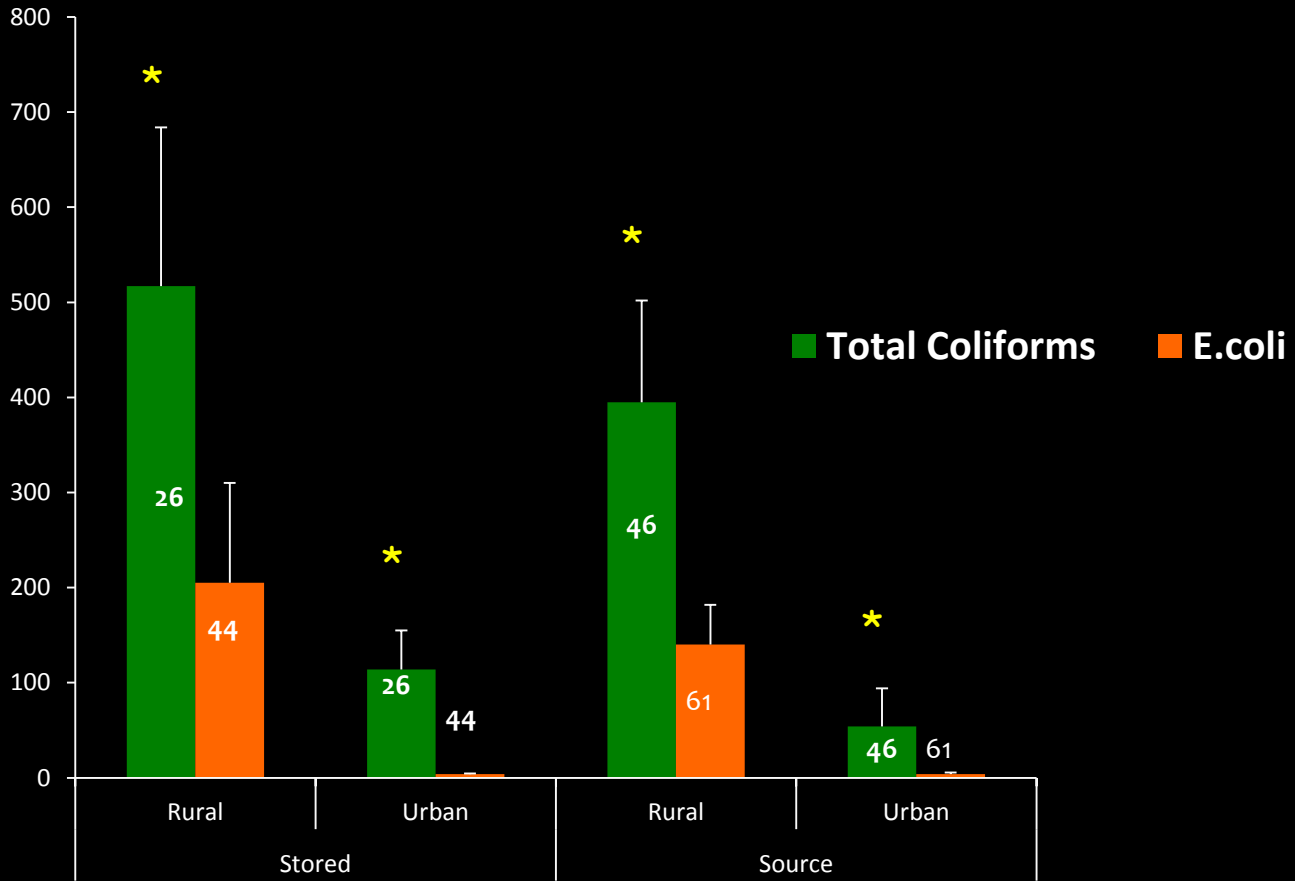
RURAL



URBAN

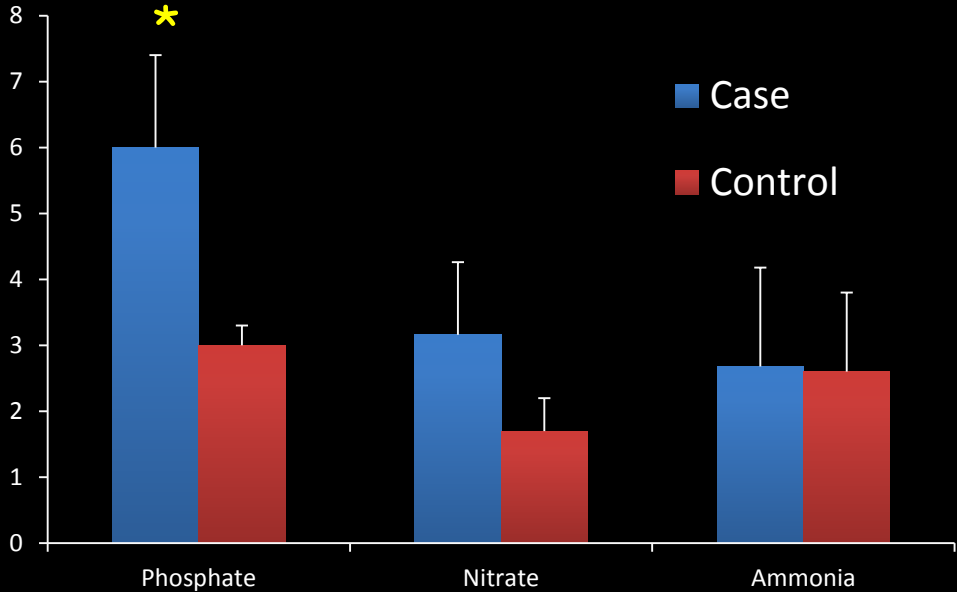
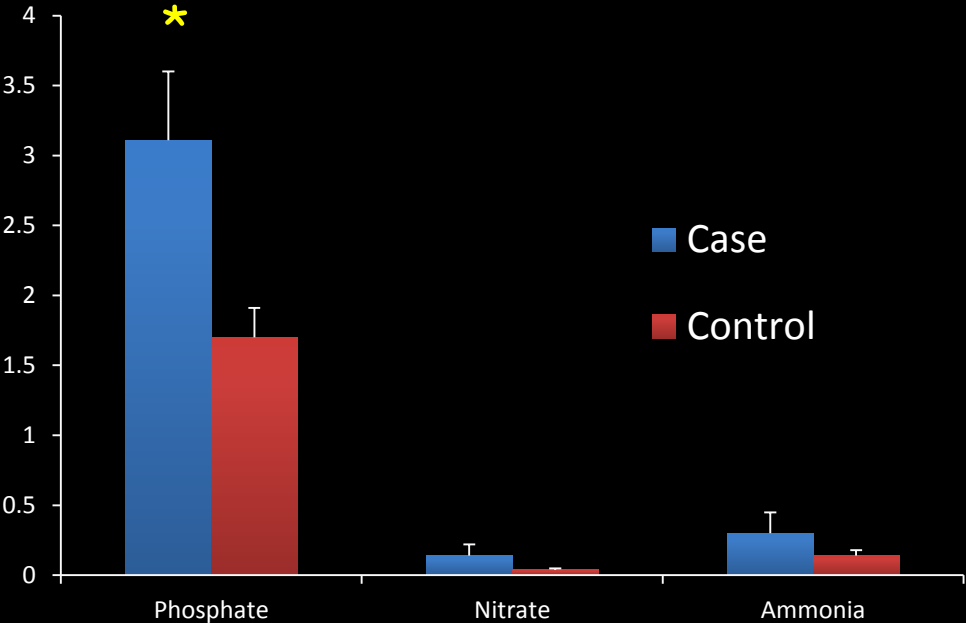
Total Coliforms and *Escherichia coli* in Rural vs Urban Drinking Water

Mean Most Probable Number CFUs / 100ml +/- se



Mean concentration of nutrients in water & soil of cases & controls

Mean concentration (mg/L) +/- se



Molecular detection

- rPCR on water & soil samples
- Assay works in soil... a first?
- 5 positives from 50 samples – all case houses



Muddy water below
house entrance

Conclusions

- In endemic, high-incidence, flood prone settings environmental sources of exposure are likely
- Localized behaviors, household environments or river basin settings may enhance risk of typhoid
- Focus on natural and built infrastructure + vaccination
- Pacific Islands as model systems for typhoid control and elimination?

**Said Lao Tsu, 2,500 years
ago.**

**“Thirty spokes share the
wheel’s hub;
It is the center hole that
makes it useful.”**



A sunset over a body of water with several small boats in the foreground and a large tree on the right. The sky is filled with orange and yellow clouds, and the sun is low on the horizon, reflecting on the water. The boats are silhouetted against the bright light, and the tree on the right is also in silhouette.

THANK YOU

a.jenkins@ecu.edu.au