



BrainWeb: Online Interface to a 3D MRI Simulated Brain Database

CHRIS A. COCOSCO, VASKEN KOLLOKIAN, REMI K.-S. KWAN, G. BRUCE PIKE, ALAN C. EVANS

McConnell Brain Imaging Centre, Montréal Neurological Institute,
McGill University, Montréal, Canada



Introduction:

The increased importance of automated computer techniques for anatomical brain mapping from MR images and quantitative brain image analysis methods leads to an increased need for validation and evaluation of the effect of image acquisition parameters on performance of these procedures. Validation of analysis techniques of in-vivo acquired images is complicated due to the lack of reference data ("ground truth"). Also, optimal selection of the MR imaging parameters is difficult due to the large parameter space. BrainWeb makes available to the neuroimaging community, online on WWW, a set of realistic simulated brain MR image volumes (Simulated Brain Database, SBD) that allows the above issues to be examined in a controlled, systematic way.

Methods:

The 3D simulated MR images are generated by varying specific imaging parameters and artifacts in an MRI simulator, which:

- starts from a fuzzy digital phantom containing the spatial probabilistic distribution of different tissue types [1]; as an example of the generality of this approach, other brain phantoms were obtained by adding MS lesions (extracted from real MRI-s) to the normal phantom (Fig. 1).
- computes signal intensities based on Bloch equations or signal equations, accounting for partial volume according to the scan parameters [2] (Fig. 2)

Image noise was specified as a percent standard deviation relative to the mean signal intensity for a reference brain tissue. Multiplicative receive intensity non-uniformity (INU) was simulated using fields recovered from real scans, and scaled for different percent sensitivity ranges.

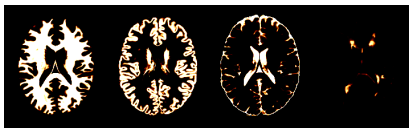


Figure 1: example of fuzzy tissue classes from the phantom: (L to R) white matter, gray matter, CSF, MS lesions

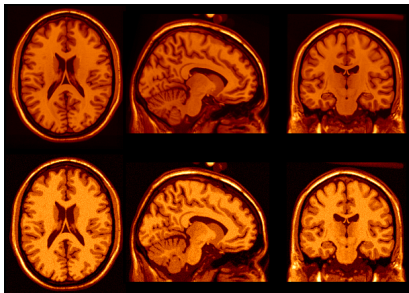


Figure 2: real (top) and simulated (bottom) MRI-s (both INU corrected)

Features:

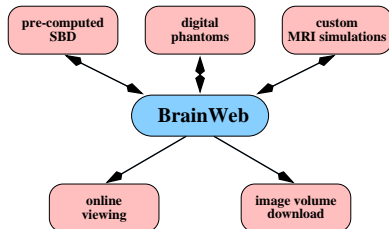


Figure 3: BrainWeb features overview

A pre-computed SBD was generated by varying specific imaging sequence and artifact parameters. The set of these parameters was chosen according to the values typically encountered in modern MRI systems [3]. For two anatomical models (normal, and with moderate MS lesions), simulated volumes for three imaging sequences are available online (T₁, T₂, PD), each with several values of slice thickness, noise and intensity INU levels (Fig. 4).

Modality: (you can choose one of the following pulse sequences)
 T1 T2 PD
 Slice thickness: (in-plane pixel size is always 1x1 mm)
 1mm 3mm 5mm 7mm 9mm
 Noise:
 0% 1% 3% 5% 7% 9%
 Intensity non-uniformity ("RF"):
 0% 20% 40%
 [Reset form] [View] [Download]

Figure 4: WWW page: SBD selection for the pre-computed volumes

In addition, BrainWeb allows a remote user to run their own custom MRI simulation (on our server) with any of several pulse sequences and source digital phantoms, and arbitrary values of the acquisition artifacts (Figs. 5, 6). After the simulation is finished, the user can preview the result online or download it, everything being done through the WWW interface.

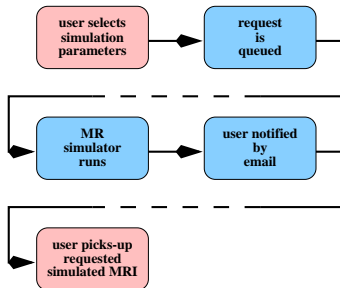


Figure 5: generating custom MRI simulations

acquisition parameter	selectable values
phantom	normal; MS lesion:mild, moderate, severe
slice thickness	1 - 10 mm
scan technique	SE, IR, SFLASH, CEFAST, FISP, FLASH, DSE, EARLY, DSE, LATE
repetition time	(any) ms
inversion time	(any) ms
flip angle	1 - 150 deg
echo times	(any) ms
partial volume (slice thickness)	1 - 10 mm
noise	0 - 10 %
INU	0 - 60 %

Figure 6: parameters that can be controlled for custom MRI simulations

All 3D image volumes are in stereotaxic space, and can be interactively explored with practically any WWW browser in three simultaneous orthogonal views at any cursor position in the volume (Fig. 7). Each simulated brain image, as well as the source digital phantoms, can be downloaded in a variety of file and data compression formats.

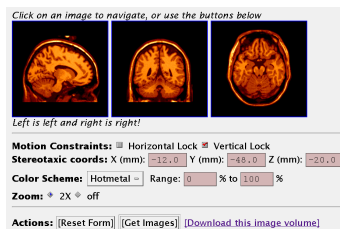


Figure 7: WWW page: BrainWeb online viewer

Applications:

SBD can be used to:

- study the performance of anatomical brain mapping techniques (as a function of different MR acquisition parameters), such as: non-linear coregistration [4], cortical surface extraction [5], or tissue classification algorithms [3].

- validate quantitative analyses of neuropathology (e.g. MS lesion quantification [6]), or other medical pattern recognition and image processing techniques.

The main advantages of using these simulations are:

- the answer is known a priori in the experiment.
- parameters can be independently controlled (Figs. 8, 9, 10, 11).

Since the source for all simulations is the same digital phantom, one has a systematic means of establishing the sensitivity of any particular procedure with respect to any imaging parameter or artifact.

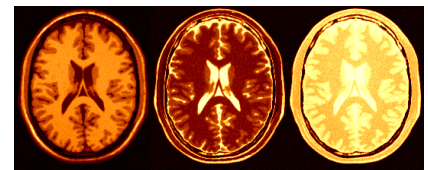


Figure 8: T₁, T₂, PD weighted (typical noise and INU levels)

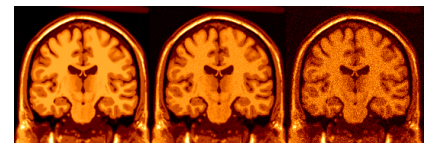


Figure 9: Noise (but no INU): zero, typical (3%), extreme (9%)

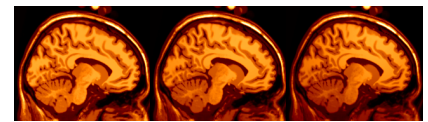


Figure 10: INU (but no noise): zero, typical (20%), extreme (40%)

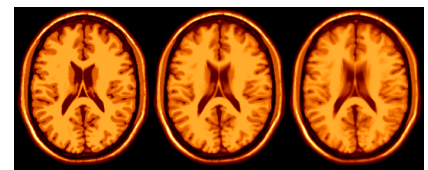


Figure 11: slice thickness and partial volume effect: (L to R) 1mm, 5mm, 9mm slices (no noise, no INU)

Conclusion:

BrainWeb provides to the international research community a convenient access to this resource through the Internet. The full SBD, the online interface for controlling the MR simulator, as well as the anatomical models (phantoms) used as input to it, are available on WWW at "http://www.bic.mni.mcgill.ca/brainweb/". We are currently working on extending BrainWeb to include fMRI and PET simulated data.

Acknowledgments:

This work supported by the U.S. Human Brain Map Project and the International Consortium for Brain Mapping (ICBM). Contributions to this project were made by Peter Neelin, Alex Zijdenbos, John Sled, and Louis Collins from the McConnell Brain Imaging Centre.

References

- [1] Collins, D.L., Holmes, C.J., Evans, A.C. *Human Brain Mapping*. 1997
- [2] Kwan, R.K.-S., Evans, A.C., Pike, G.B. In *Lecture Notes in Computer Science*, vol. 1131, pages 135-140, 1996.
- [3] Kollokian, V. Master's thesis, Concordia University, Montreal, QC, Canada, Nov. 1996.
- [4] Collins, D.L., Holmes, C.J., Peters, T.M., Evans, A.C. *Human Brain Mapping*. 3(3):190-208, 1996.
- [5] MacDonald, D., Avis, D., Evans, A.C. In *VBC, Proceedings of the SPIE*, vol. 2359, pages 160-169, 1994.
- [6] Zijdenbos, A.P., Evans, A.C., Riahi, F., Sled, J.G., Chui, H.-C., Kollokian, V. In *Lecture Notes in Computer Science*, vol. 1131, pages 439-448, 1996.